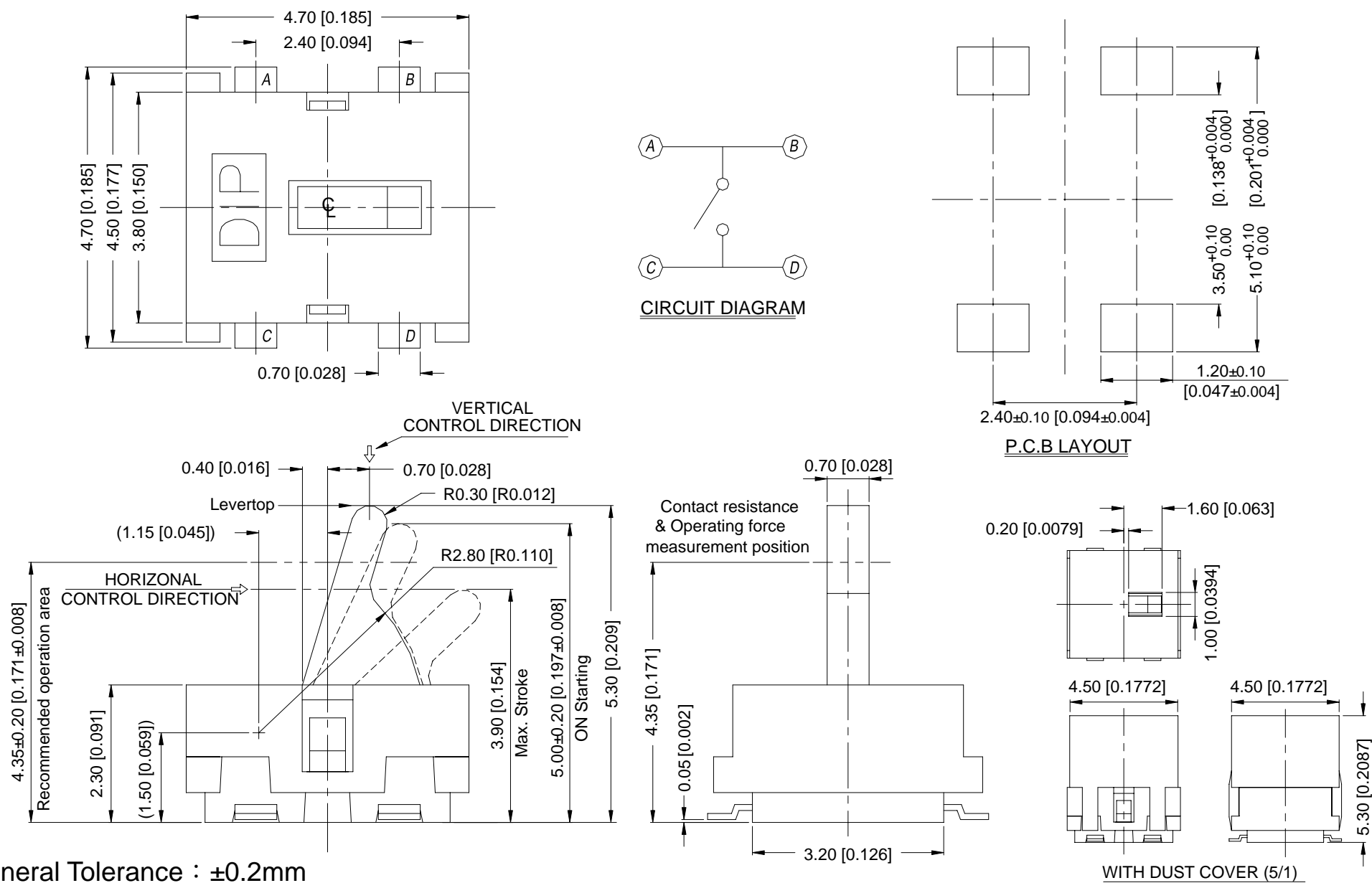


ATE SERIES

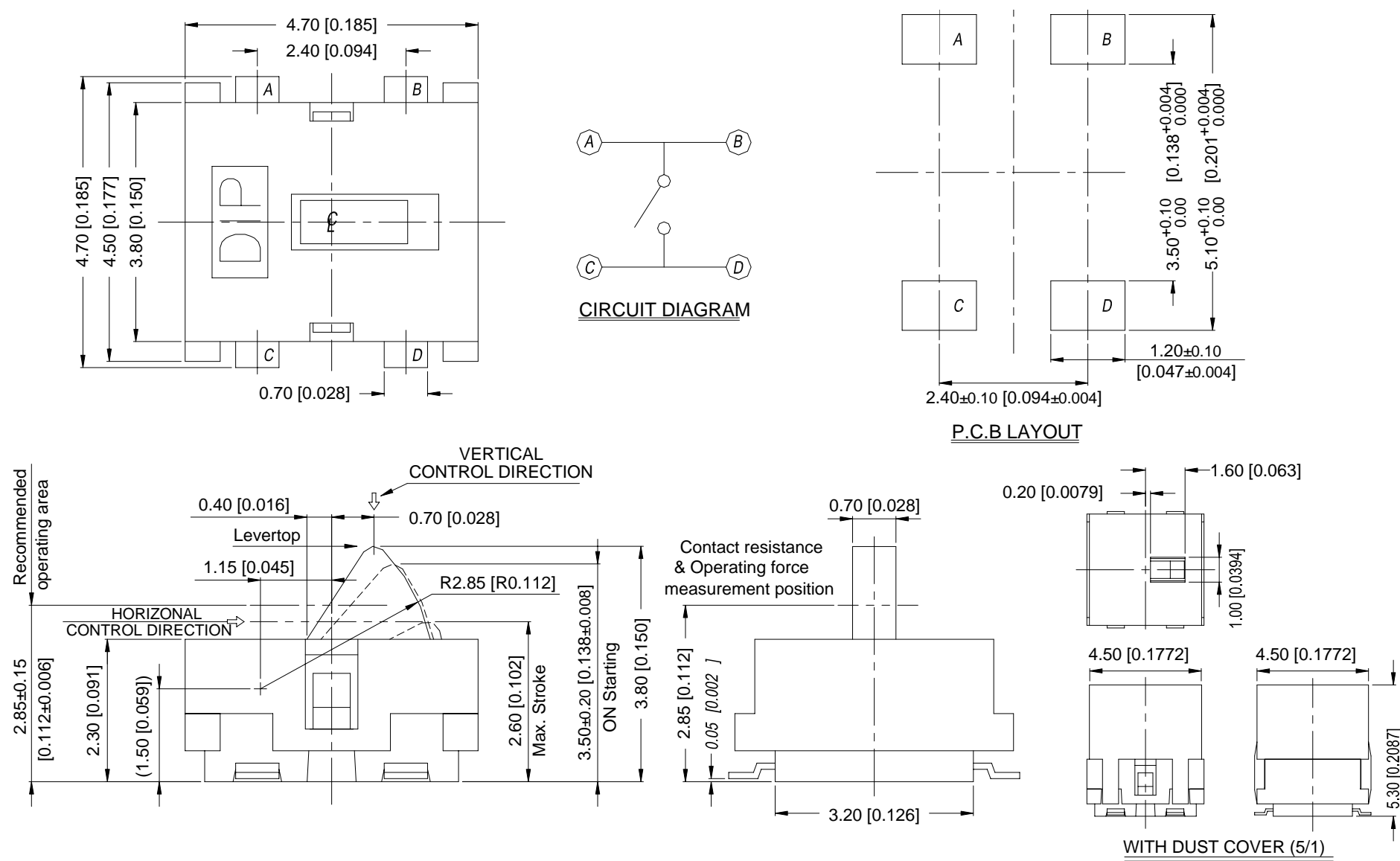
DIMENSIONS

ATE-1



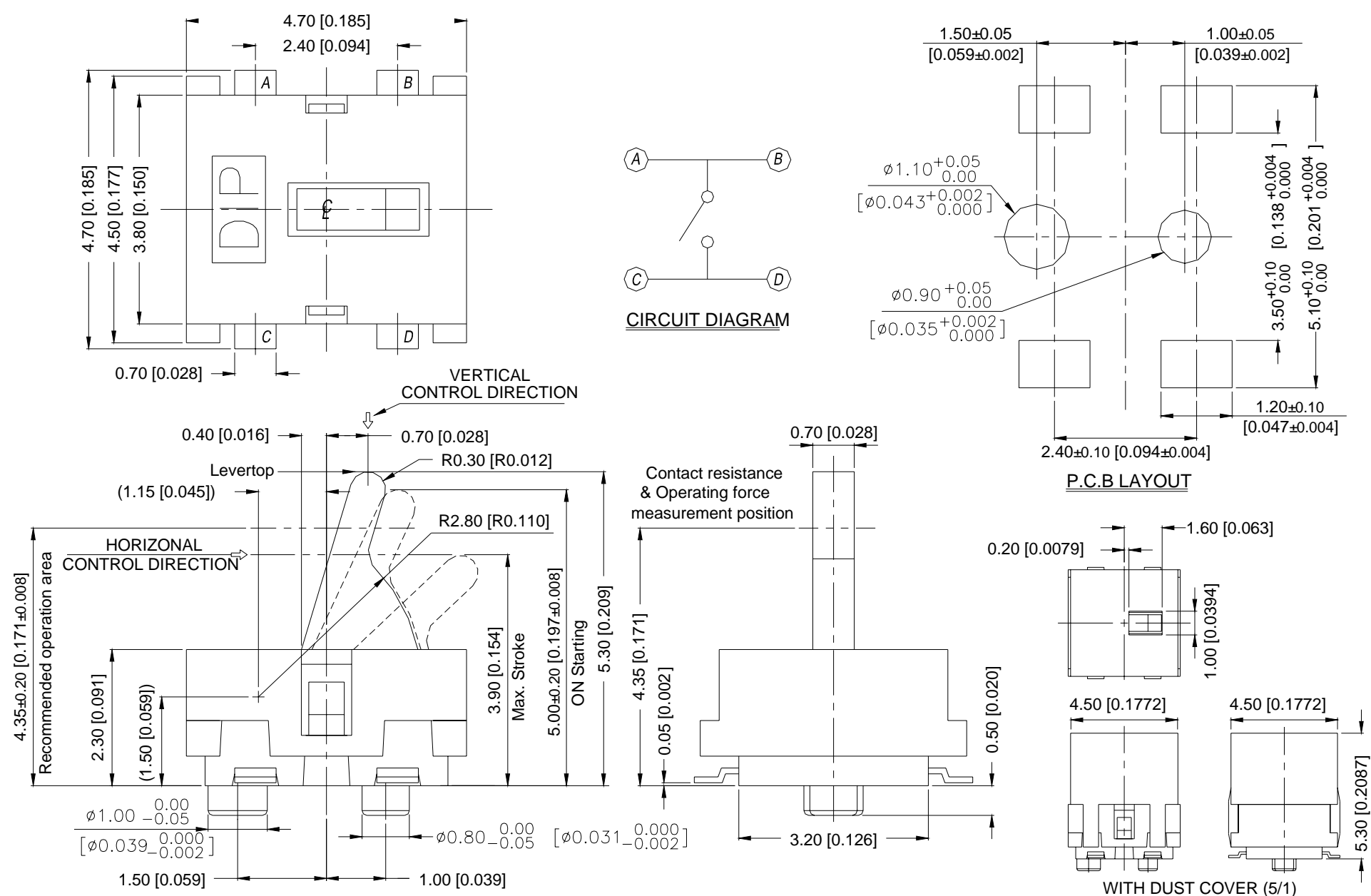
General Tolerance : ±0.2mm

ATE-2

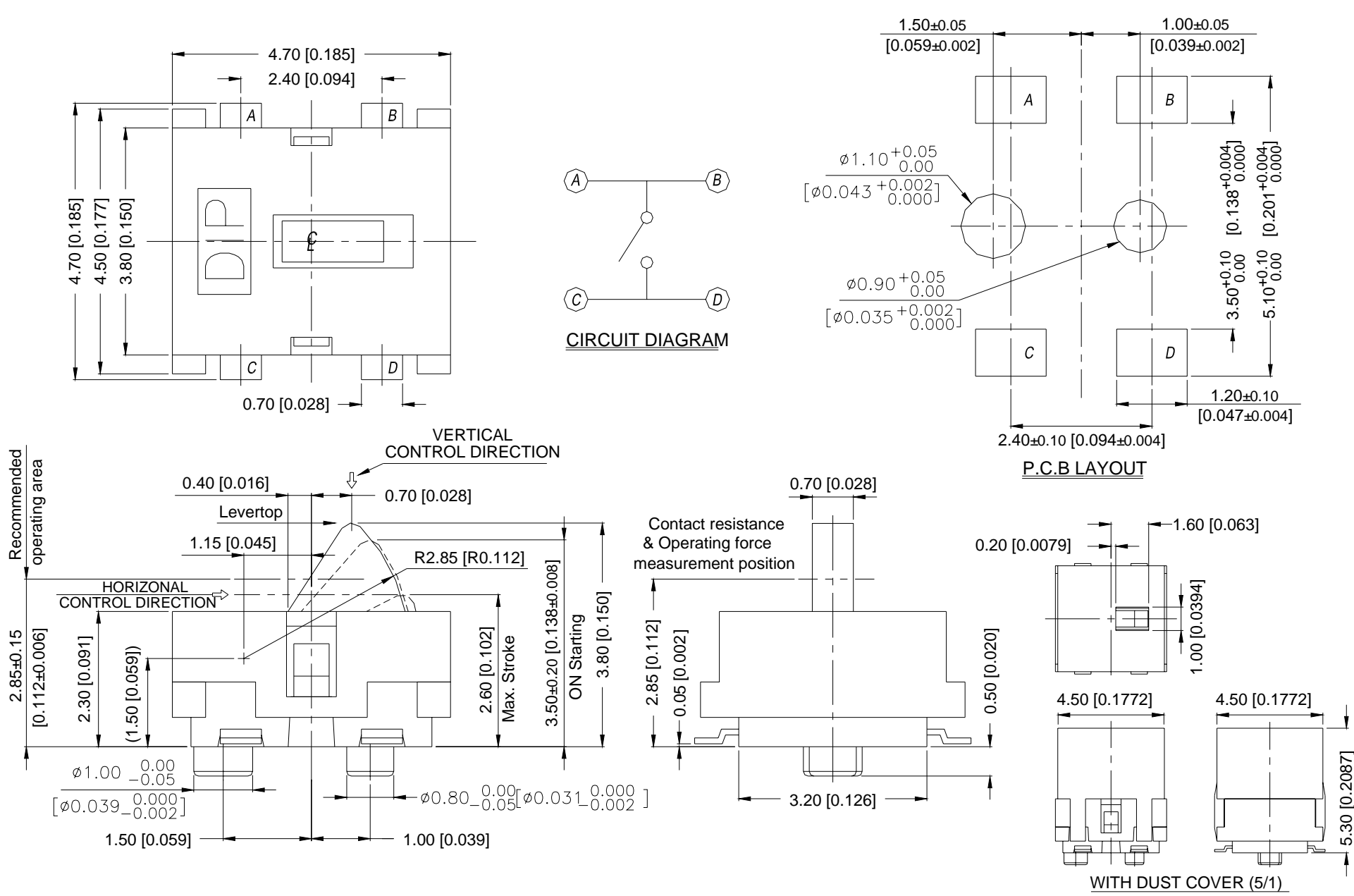


General Tolerance : ±0.2mm

ATE-1C

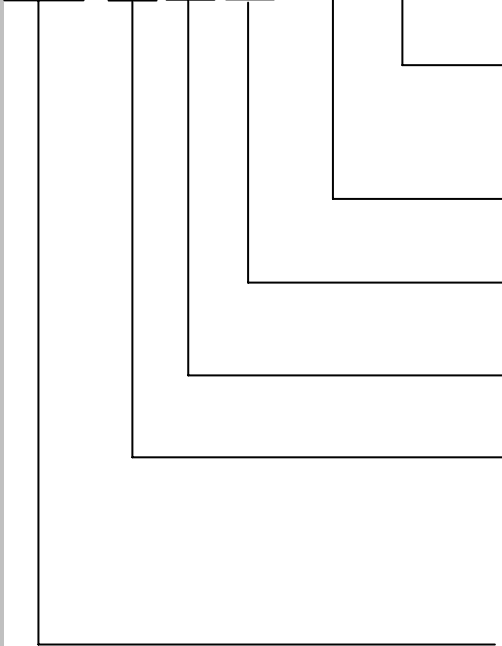


ATE-2C



HOW TO ORDER

ATE - ☐ ☐ ☐ - V - ☐



Package :
T/R=Tape & Reel

V=Lead Free Solderable

K=With Cover
☐=Without Cover
C=With Post
☐=Without Post
Stem Height :
1=5.30 mm
2=3.80 mm

DETECTOR SWITCH

SPECIFICATION

△MECHANICAL

Operation Force: 40gf max.
Stork : 3.90mm max. < Stem Height 5.30mm>
 2.60mm max. < Stem Height 3.80mm>
Operation Temperature: -10℃ to +60℃
Storage Temperature: -20℃ to +70℃
△ELECTRICAL
Electrical Life: 100,000 cycles
Rating:1mA , 5VDC
Contact Resistance: 1Ω max.
Insulation Resistance: 100MΩ min. 100V DC
Dielectric Strength: 100VAC / 1 minute
Rate of Operation: 20~25 operation per minute

MATERIAL

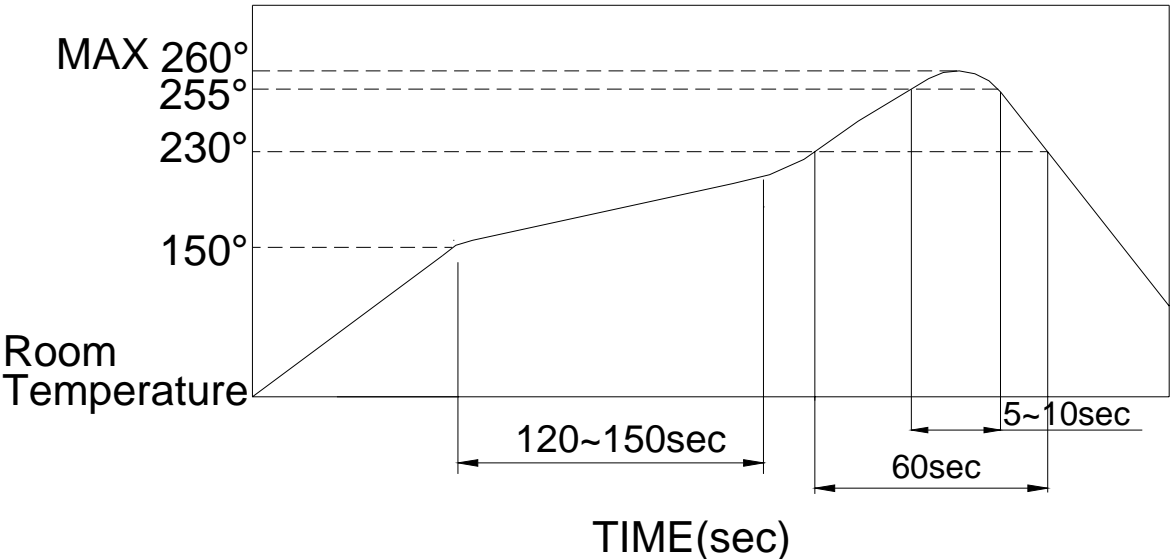
△Cover(1) : LCP High-temp Thermoplastic.
Color : Black
△Cover(2) : LCP High-temp Thermoplastic.
Color : Black
△STEM : LCP High-temp Thermoplastic.
Color : Black
△CONTACT : Stainless with silver cladding.
△BASE : PA9T High-temp Thermoplastic
Color : Black
△TERMINAL : Brass, Silver Plating.

SOLDERING PROCESS

△HAND SOLDERING: Use a soldering iron of 30 watts, controlled at 350℃ approximately Max 5 seconds while applying.

△REFLOW SOLDERING : When applying reflow soldering, the peak temperature or the reflow oven should be set to 260℃ max.

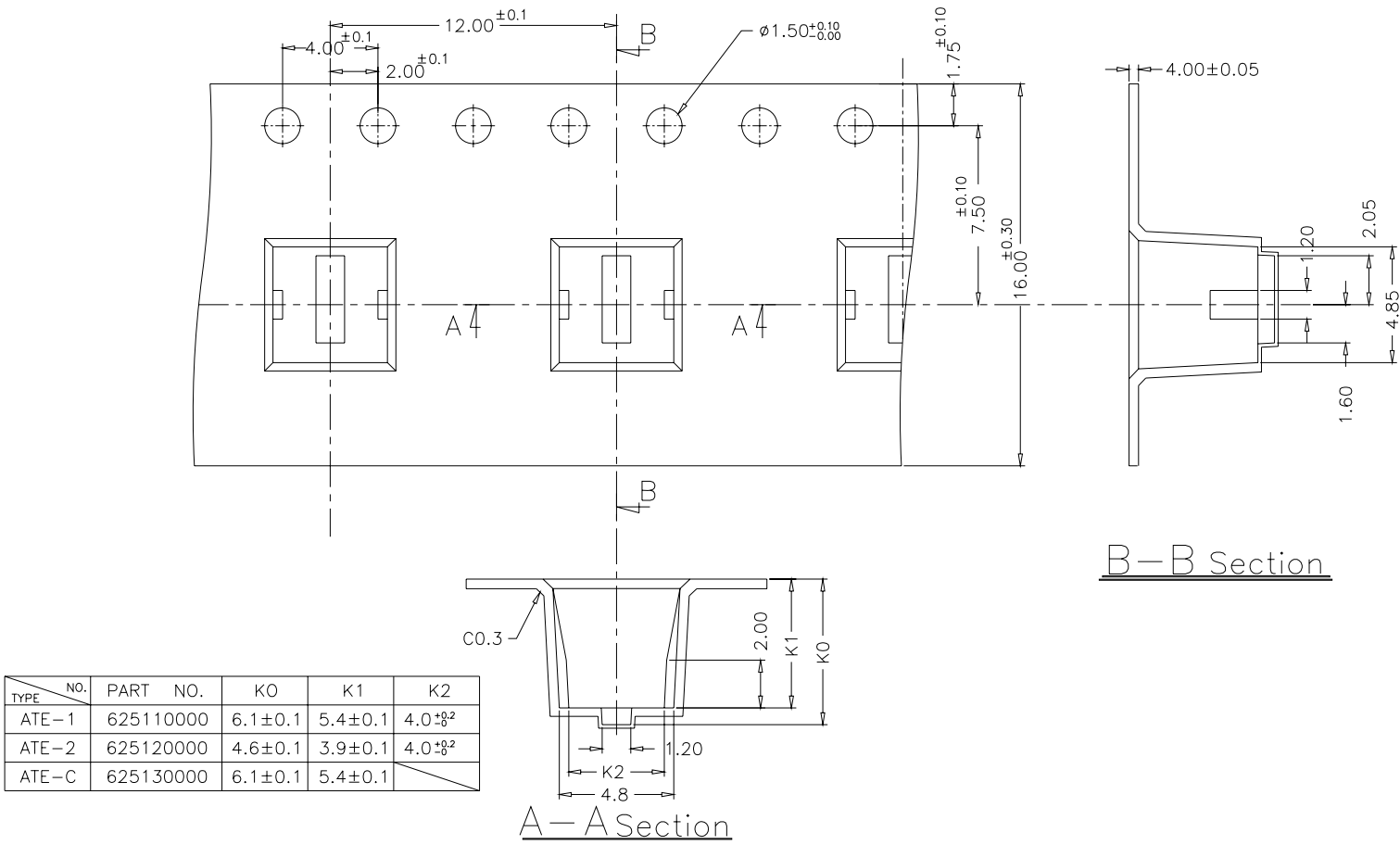
△Temperature Profile :



PACKING

Part Number	Number Per Reel	
ATE-1□□-T/R	900	
ATE-2K-T/R	900	
ATE-2CK-T/R	900	
ATE-2-T/R	1200	
ATE-2C-T/R	1200	

ATE-1 、 2 REEL



General Tolerance : $\pm 0.1\text{mm}$