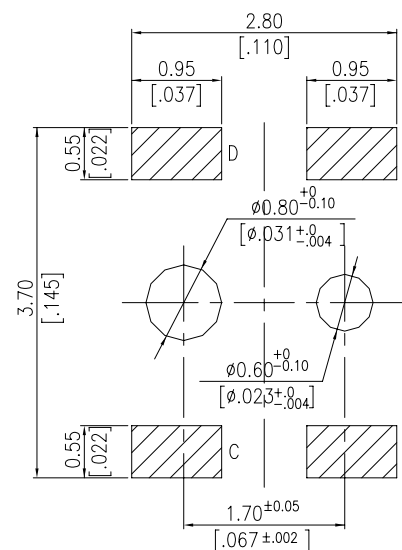
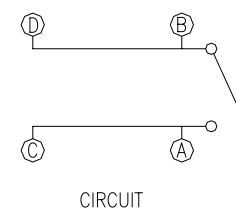
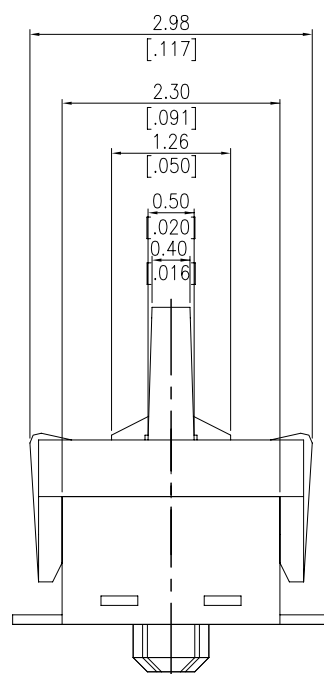
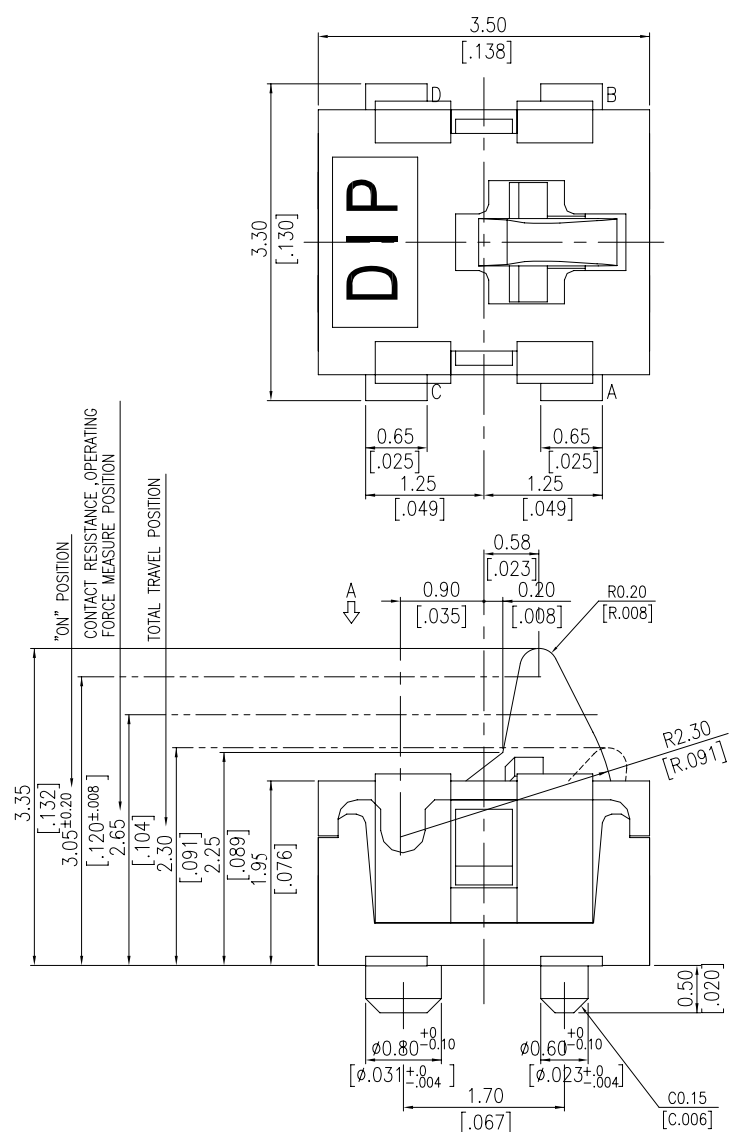
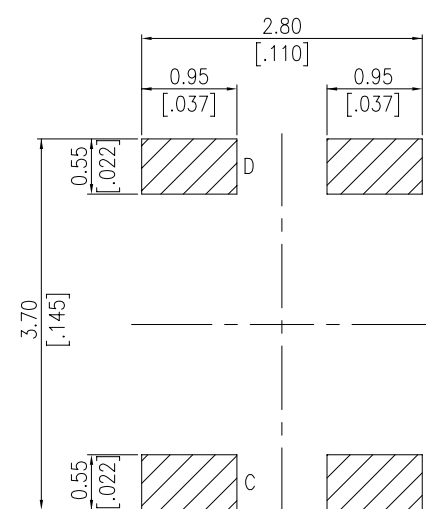
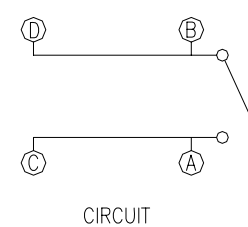
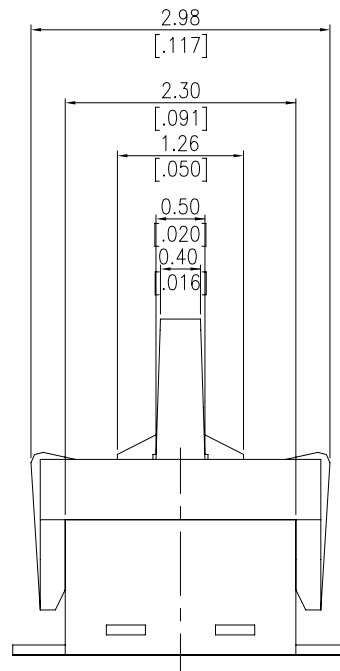
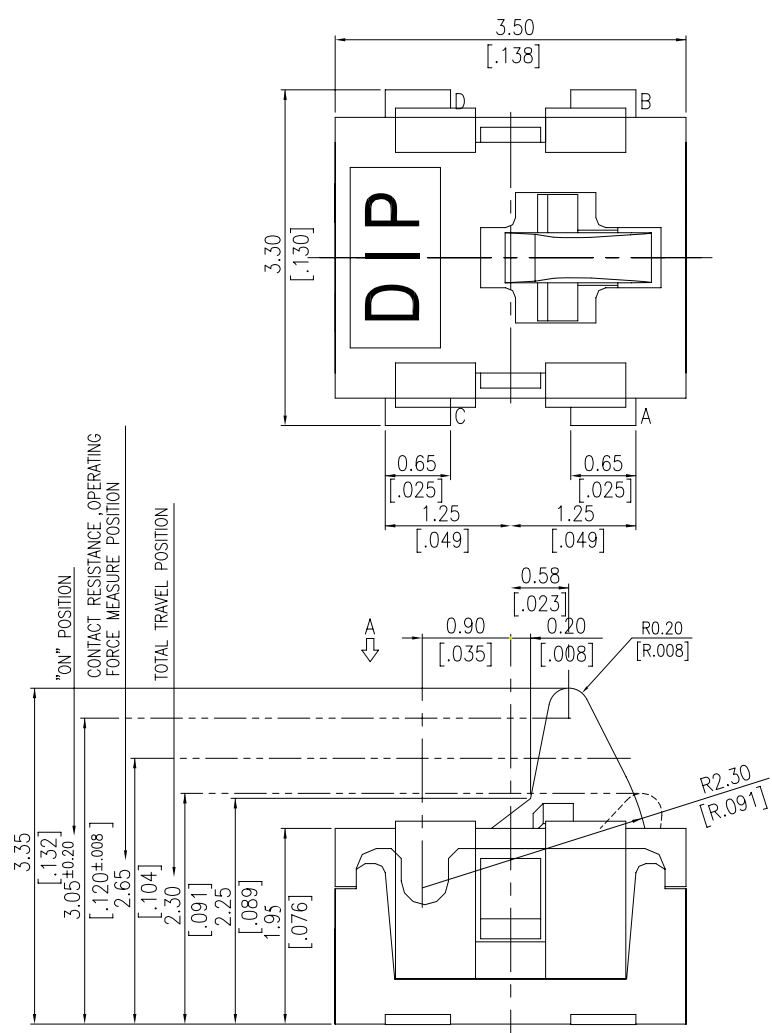


DIMENSIONS

CTE-P-V

P.C.B. LAYOUT
(VIEW FROM THE DIRECTION A)

General Tolerance : $\pm 0.2\text{mm}$

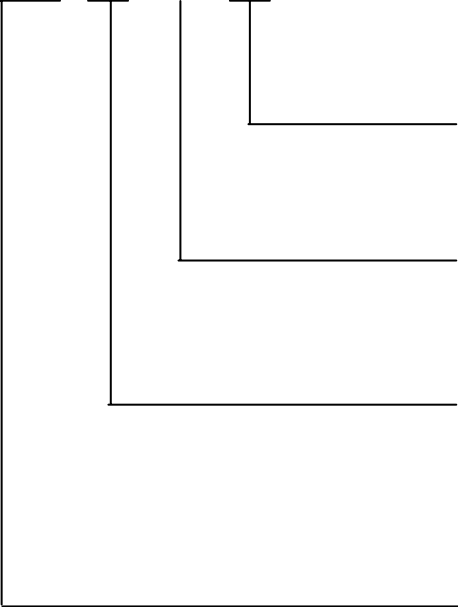
CTE-V

P.C.B. LAYOUT
(VIEW FROM THE DIRECTION A)

General Tolerance : $\pm 0.2\text{mm}$

HOW TO ORDER

C T E - ☐ - V - ☐



Package :
T/R = Tape & Reel

Soldering :
V = Lead Free Solderable

Alignment Pin :
☐ = Without Post
P = With Post

SPECIFICATION

- △MECHANICAL
- Operation Force: 35gf max.
 - Stroke: 1.05 mm
 - Operation Temperature: -15℃ to +70℃
 - Storage Temperature Range:-40℃ to +85℃
- △ELECTRICAL
- Electrical Life : 100,000 cycles
 - Rating : 0.1mA~100mA, 20mA~5V DC
 - Contact Resistance : 500mΩ max.
 - Insulation Resistance : 100MΩ min. at 100VDC
 - Dielectric Strength : 250 VAC/ 1 minute
 - Contact Arrangement : 1 pole 1 throw.

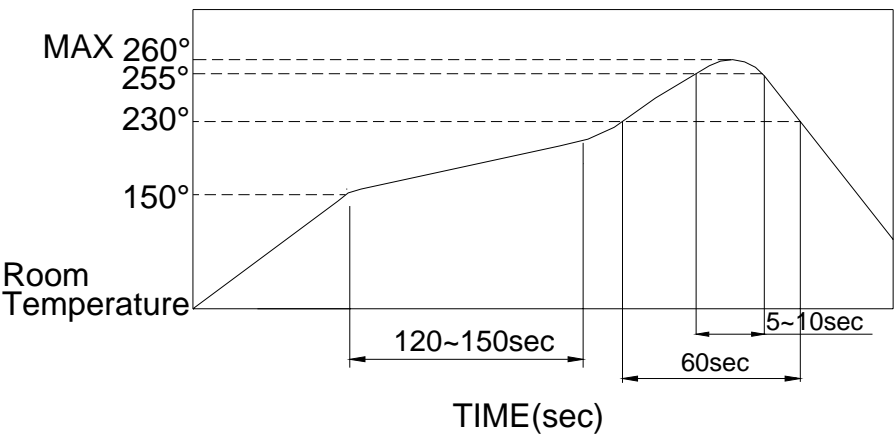
MATERIAL

- △BASE : UL 94V-0 Nylon High-Temp Thermoplastic
COLOR : Black
- △COVER : UL 94V-0 Nylon High-Temp Thermoplastic
COLOR : Black
- △STEM : UL 94V-0 Nylon High-Temp Thermoplastic
COLOR : Black
- △CONTACT DISC : Stainless with silver plated.
- △TERMINAL : PHOSPHOR BRONZE with silver plated.

SOLDERING PROCESSES

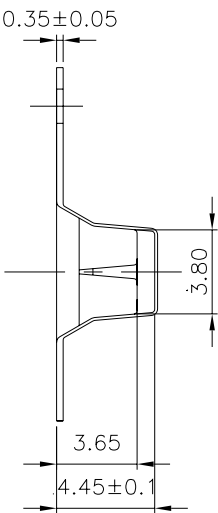
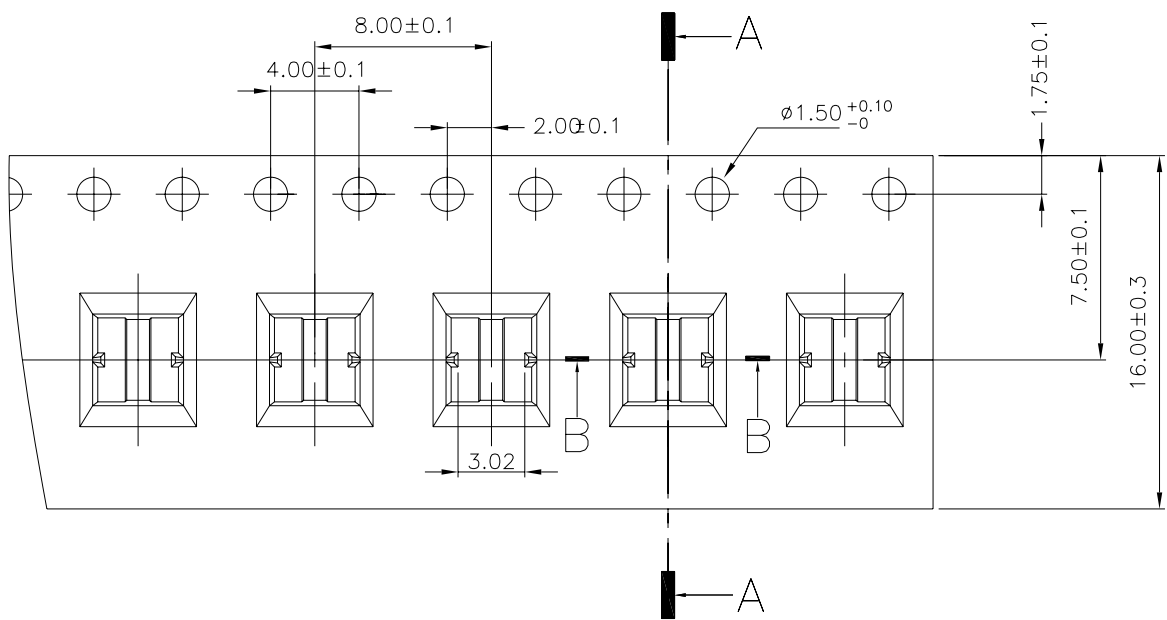
For best results, please follow these recommendations : Δ Reflow Temperature Profile:

Δ HAND SOLDERING : Use a soldering iron of 30 watts,
Controlled at 608°F(320°C) approximately 2 seconds while
applying.
 Δ WAVE SOLDERING : Recommended solder temperature
at 500°F(260°C) max. 5 seconds for through hole type.
 Δ RELOW SOLDERING : When applying reflow soldering,
The peak temperature or the reflow oven should be set to
260°C max.

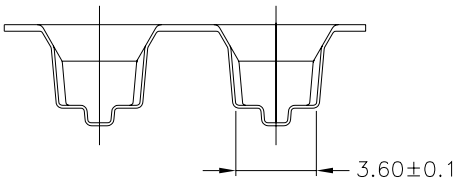


PACKING
CTE-P REEL

Part Number	Number Per Tube	Number Per Reel
CTE	--	1800
CTE-P	--	



SECTION A-A



SECTION B-B