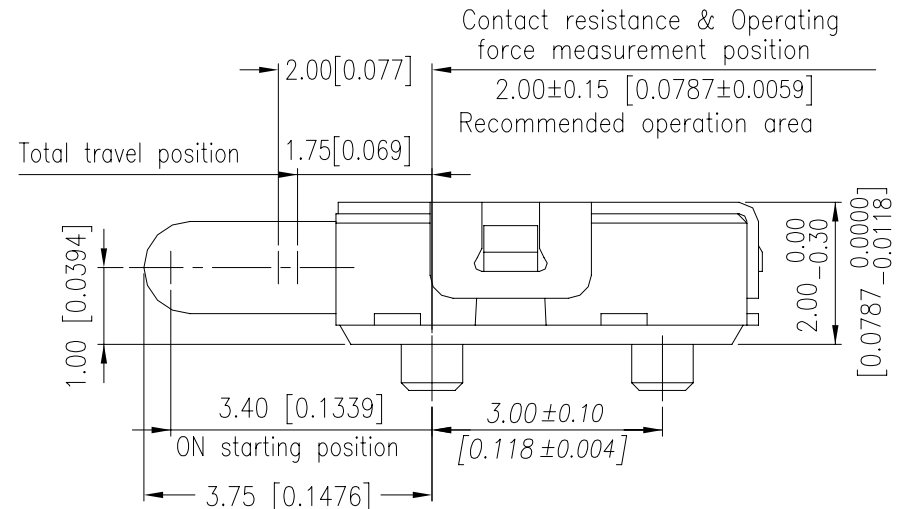
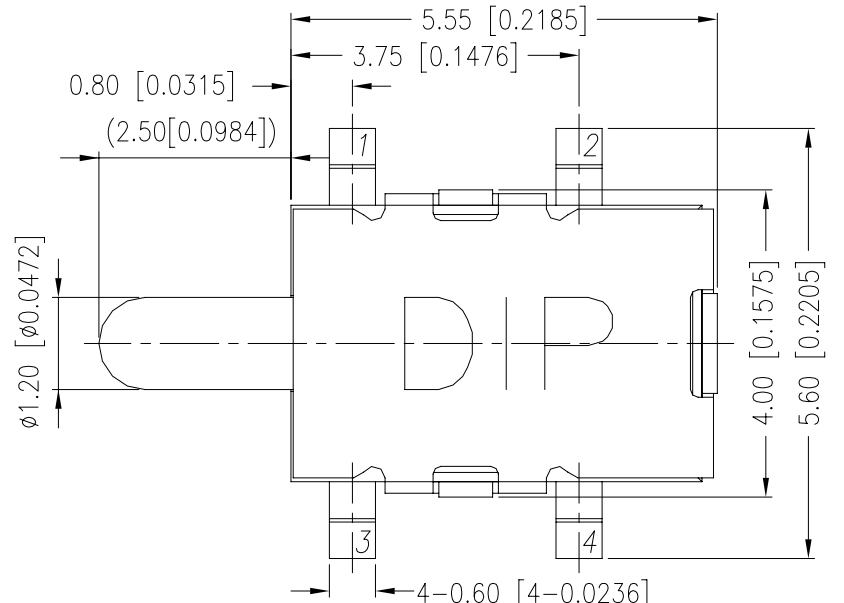
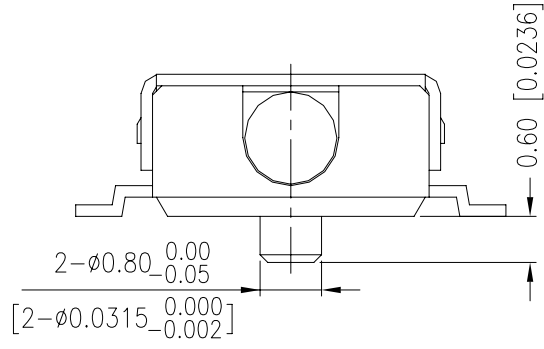
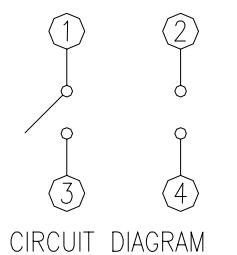
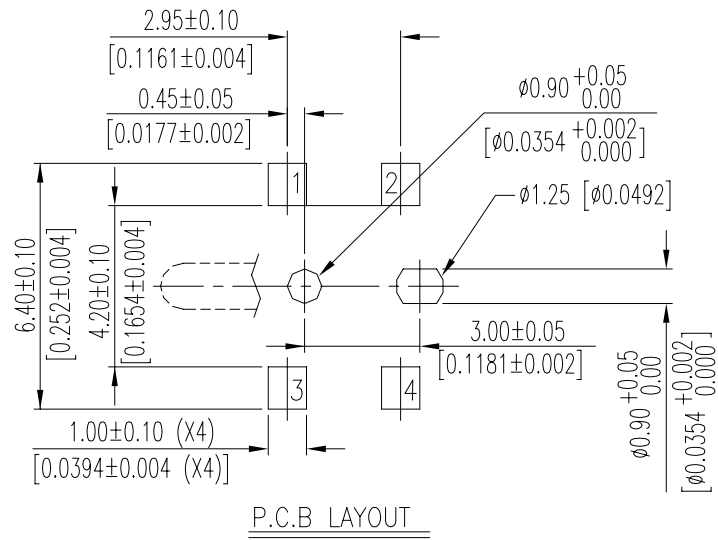


# FTE SERIES

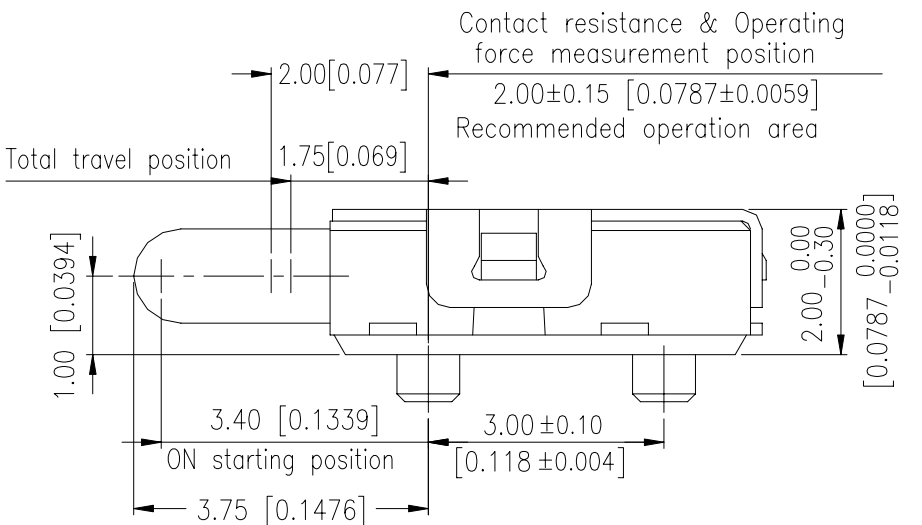
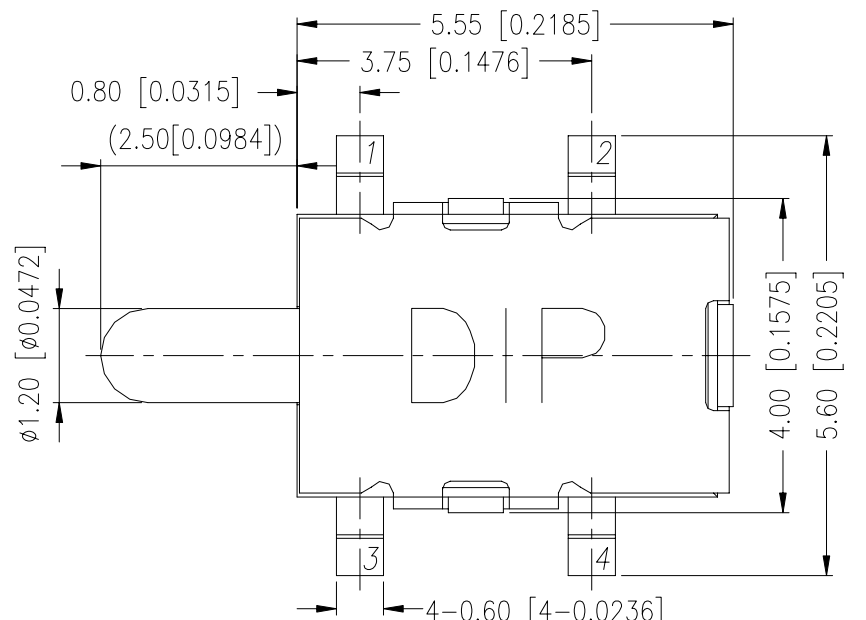
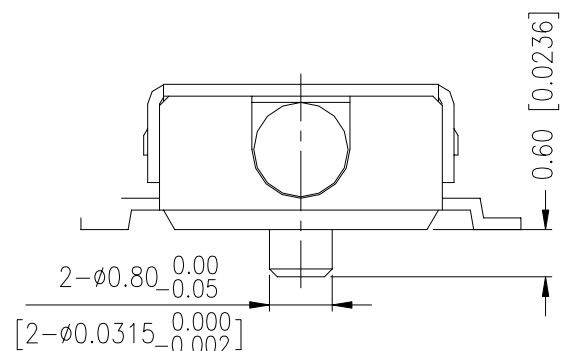
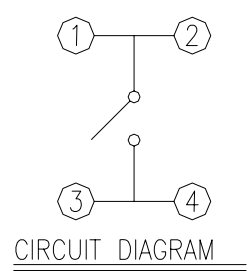
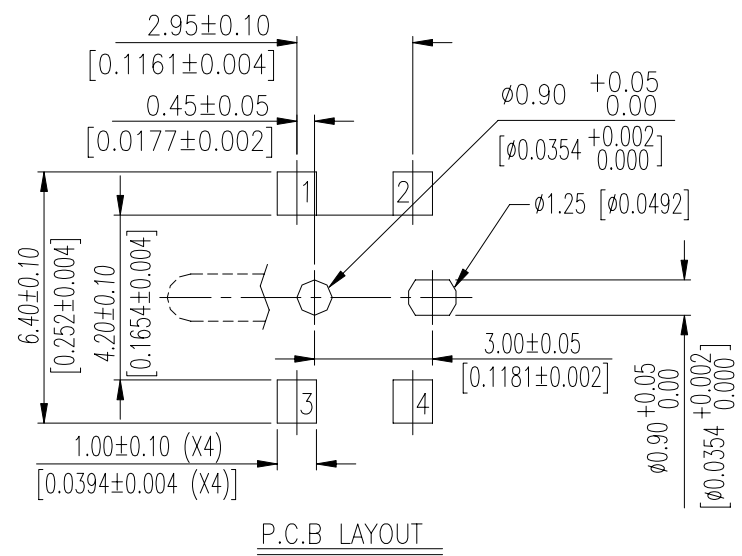
## DIMENSIONS

### FTE-1C-V



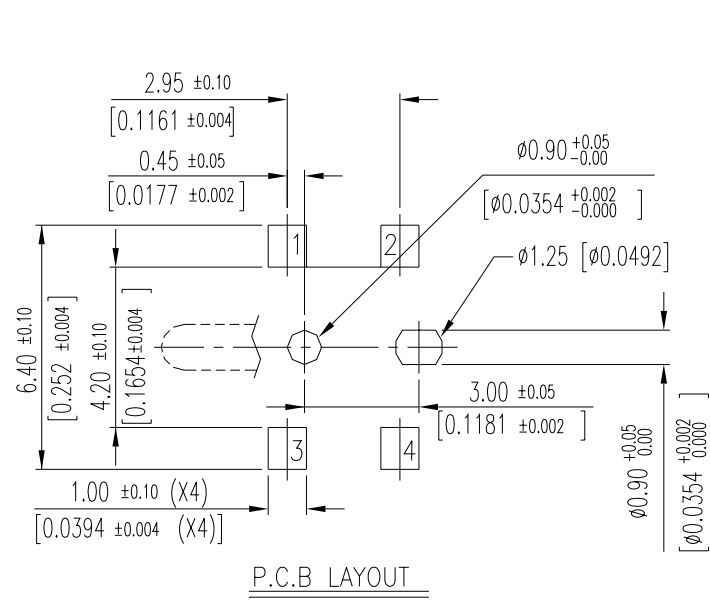
General Tolerance : ±0.20.

### FTE-2C-V

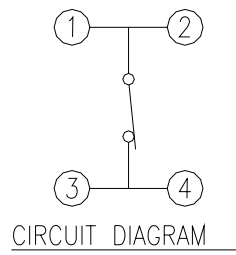


General Tolerance : ±0.20.

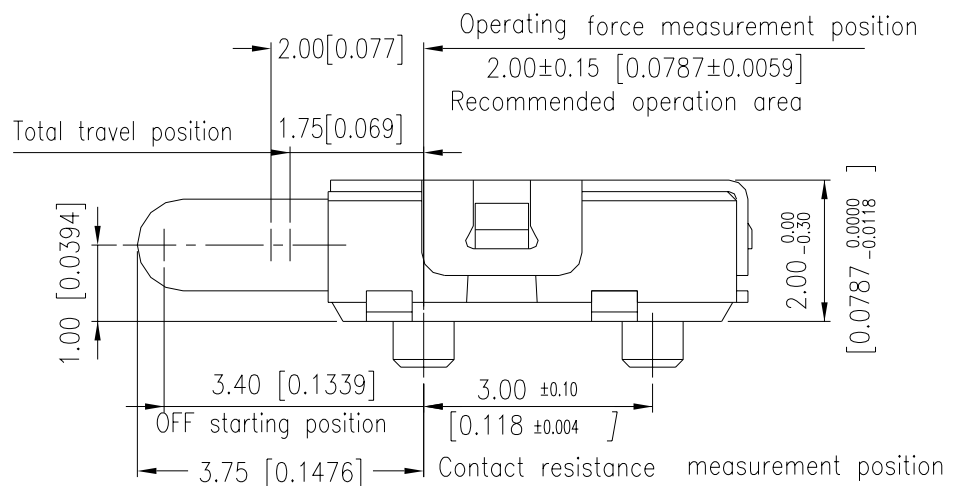
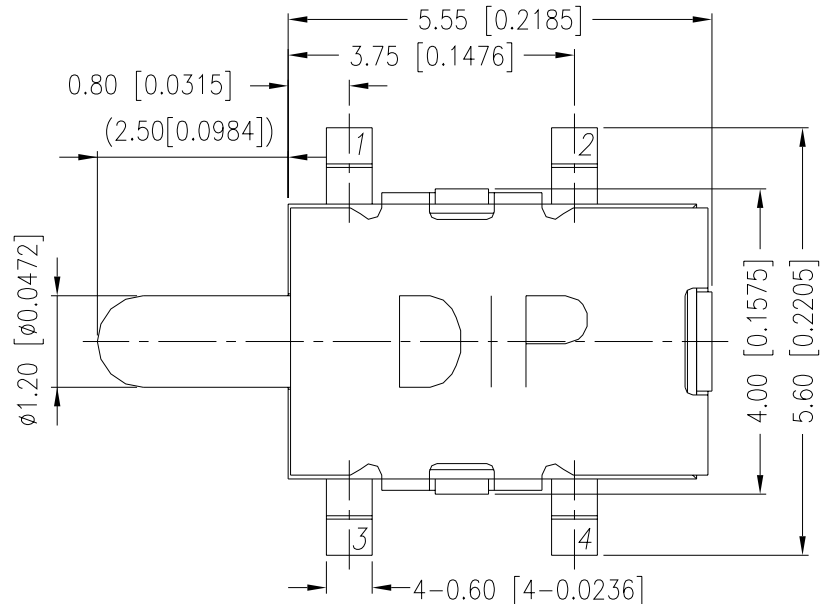
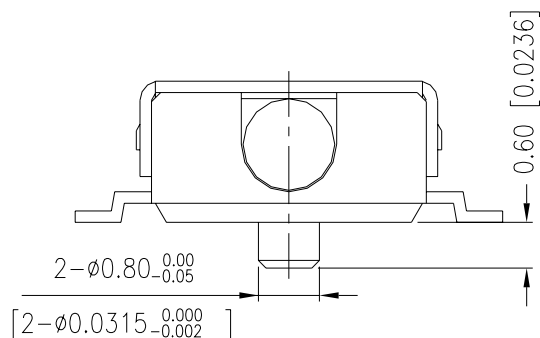
FTE-3C-V



P.C.B. LAYOUT



CIRCUIT DIAGRAM



General Tolerance : ±0.20.

HOW TO ORDER

FTE - ☐ C ☐ - V - ☐

Package :  
T/R = Tape & Reel  
  
V = Lead Free Solderable  
  
☐ = With Silver Plated  
A = With Gold Plated  
C = With Post

CIRCUIT DIAGRAM		
1C	2C	3C

Detector Switch

SPECIFICATION

△MECHANICAL

Operation Force: 50gf max.  
Operation Temperature Range: -10°C to +60°C.  
Storage Temperature Range: -20°C to +70°C.

△ELECTRICAL

Electrical Life: 100,000 cycles  
Rating: 1mA,5VDC  
Contact Resistance: 2Ω max  
Insulation Resistance: 100MΩ min  
Dielectric Strength: 100VAC / 1 minute

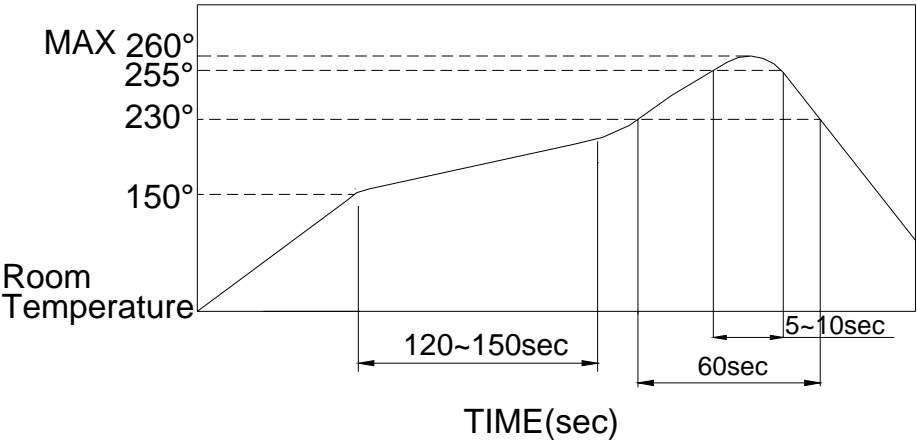
MATERIAL

△COVER: Stainless Steel  
△BASE: UL94V-0 Nylon High-Temp Thermoplastic.  
Color: Black  
△STEM: UL94V-0 Nylon High-Temp Thermoplastic.  
Color: Black  
△CONTACT: Stainless with silver plated  
Stainless with Au plated  
△TERMINAL : Brass with silver plated  
Brass with Au plated  
△SPRING : Piano Wire.

SOLDERING PROCESS

- △HAND SOLDERING: Use a soldering iron of 30 watts, controlled at 350℃ approximately max 5 seconds while applying.
- △REFLOW SOLDERING: When applying reflow soldering, the peak temperature or the reflow Oven should be set at 260℃max.
- △Reflow Temperature Profile:

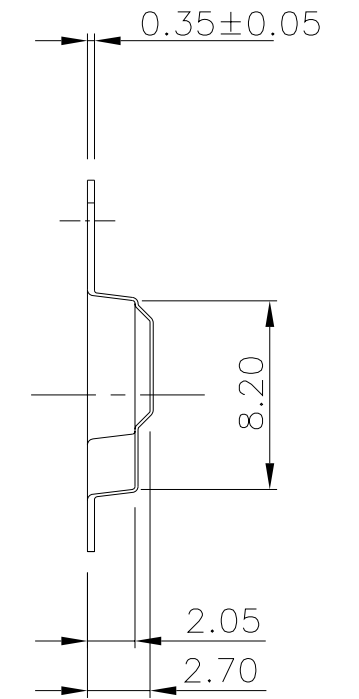
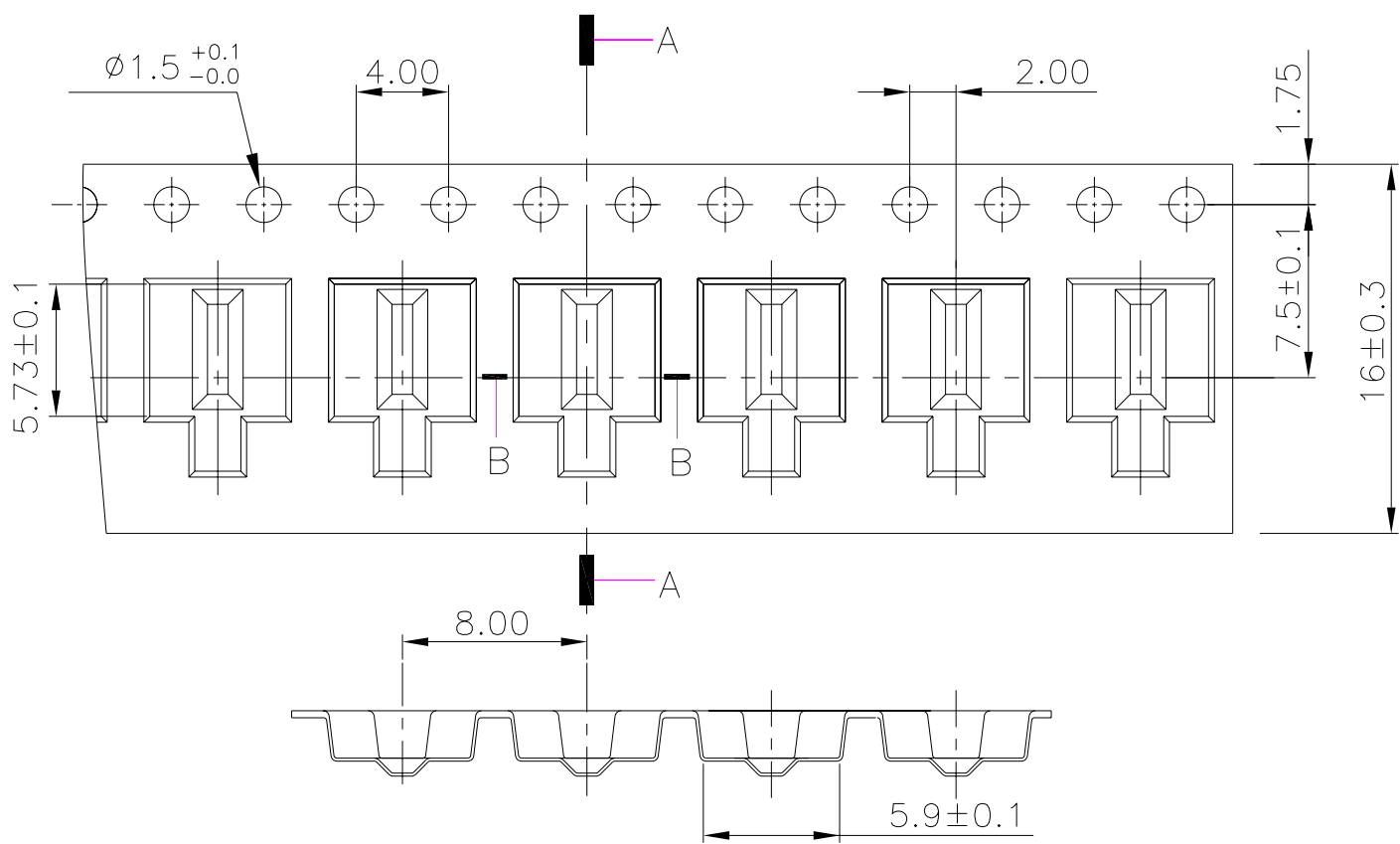
△Temperature Profile :



PACKING

Part Number	Number Per TUBEI	Number Per Reel
FTE	-	3000

REEL



SECTION A-A

SECTION B-B