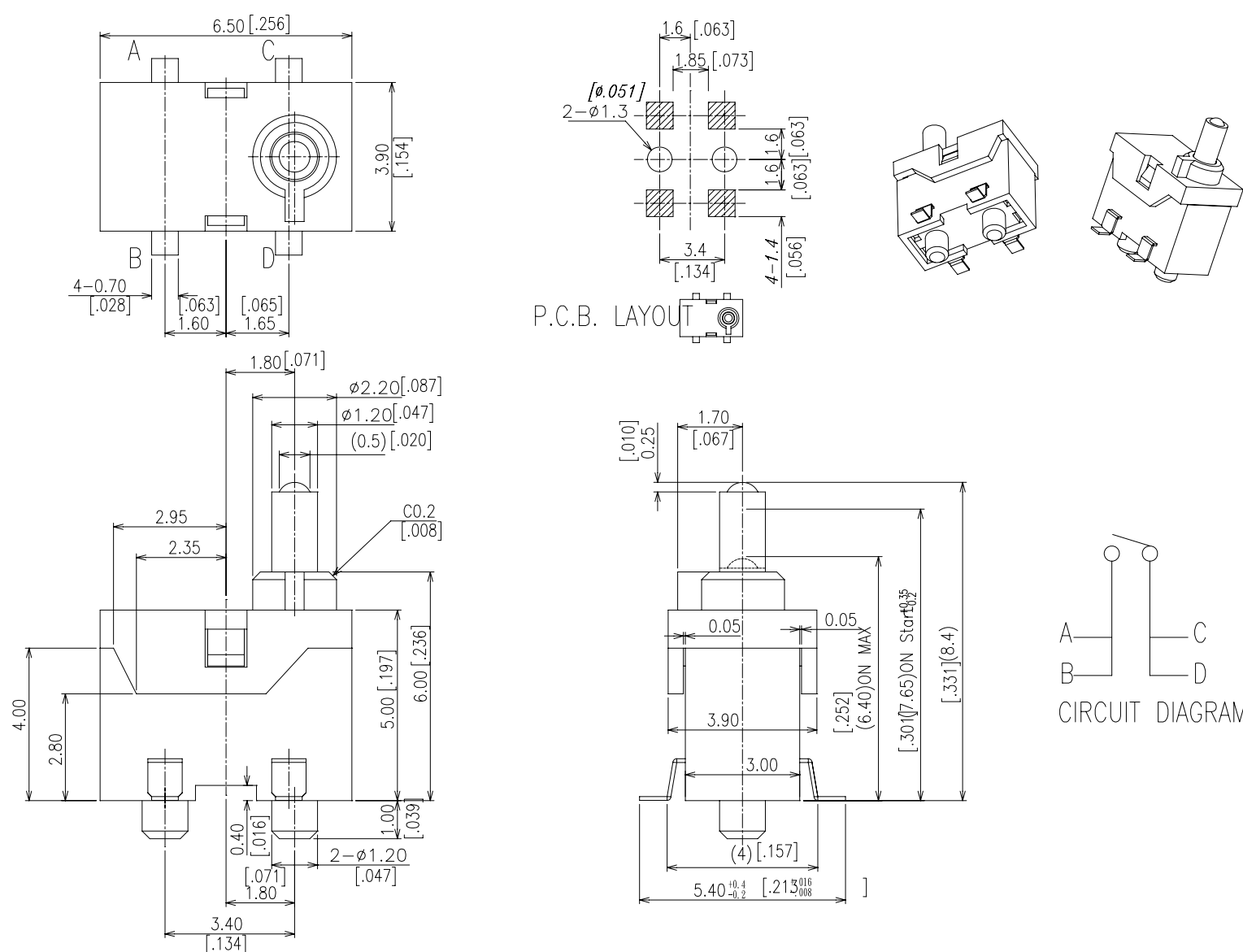


TE SERIES

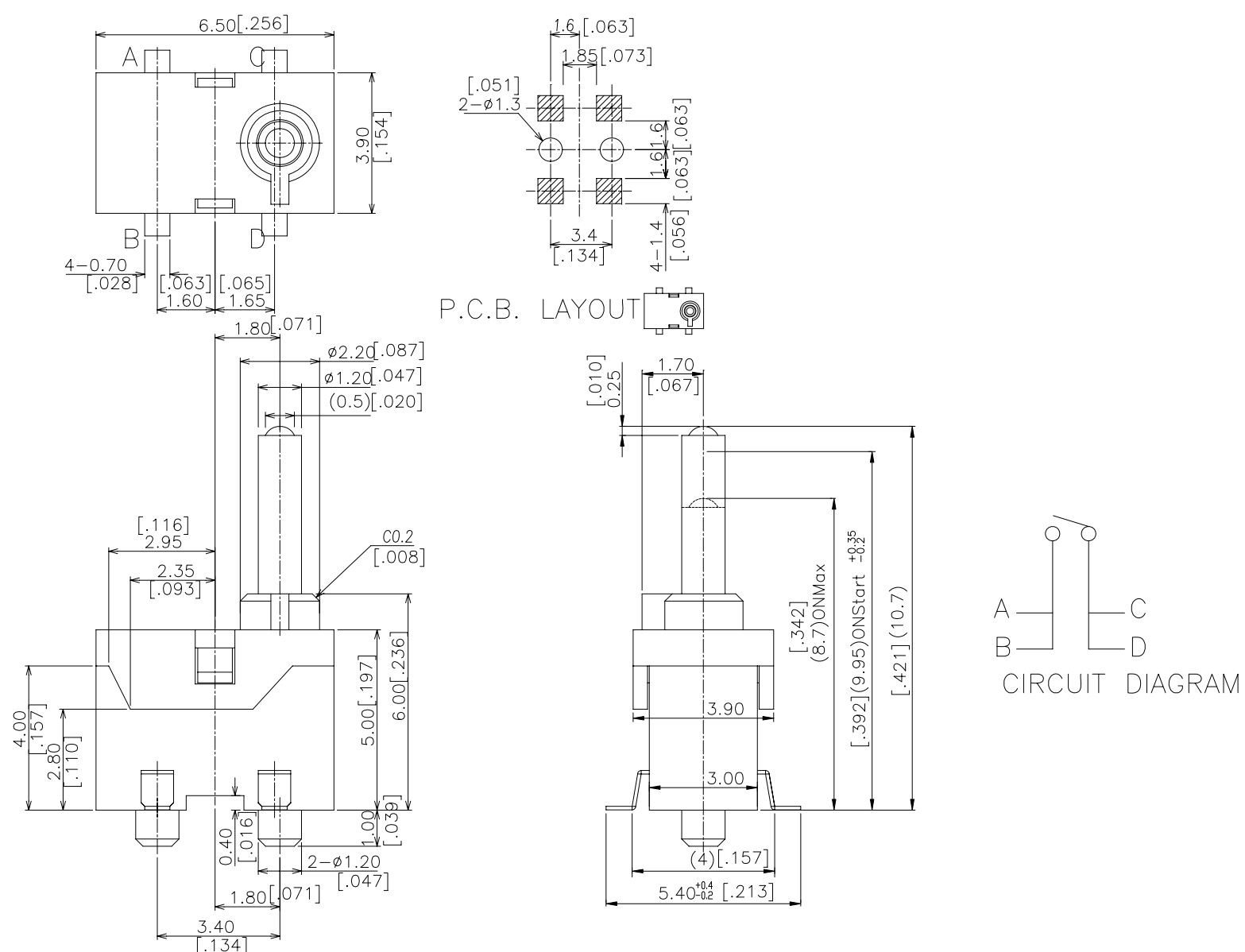
DIMENSIONS

TE-M



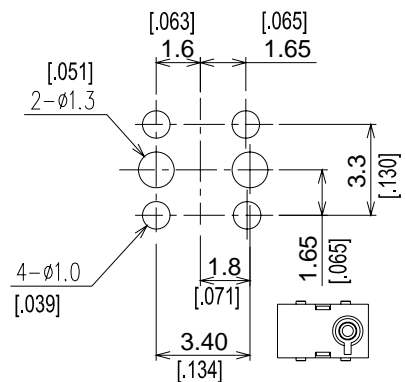
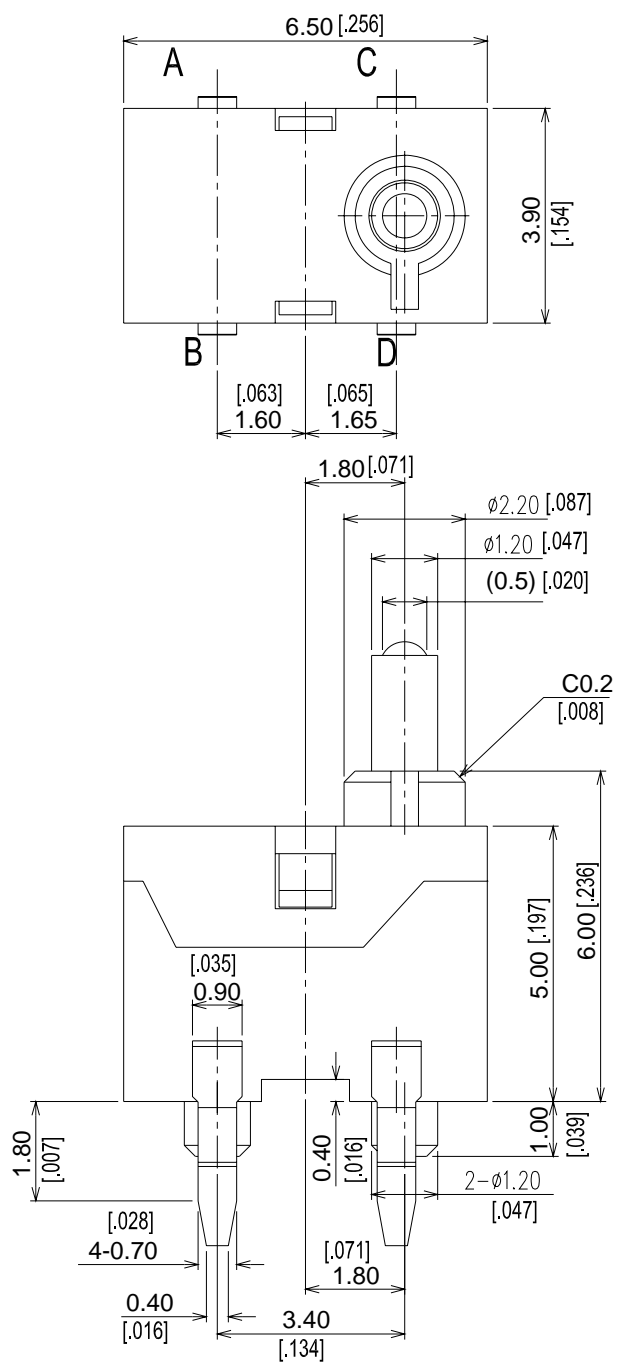
General Tolerance : $\pm 0.2\text{mm}$

TE-ML

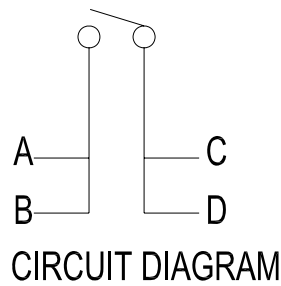
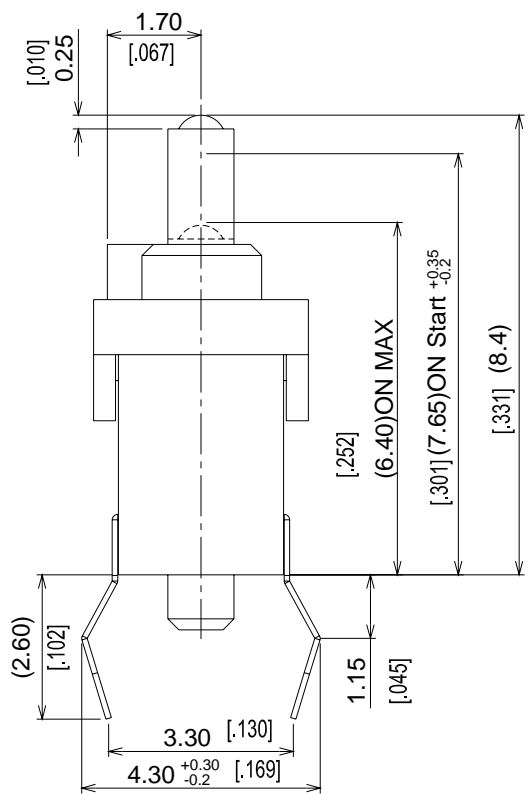


General Tolerance : $\pm 0.2\text{mm}$

TE-H



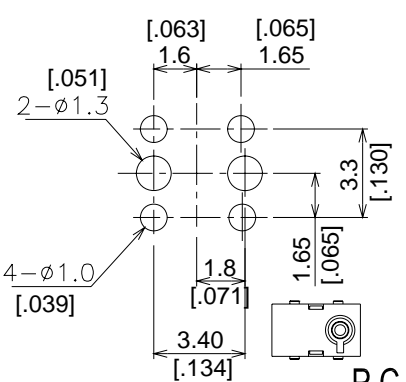
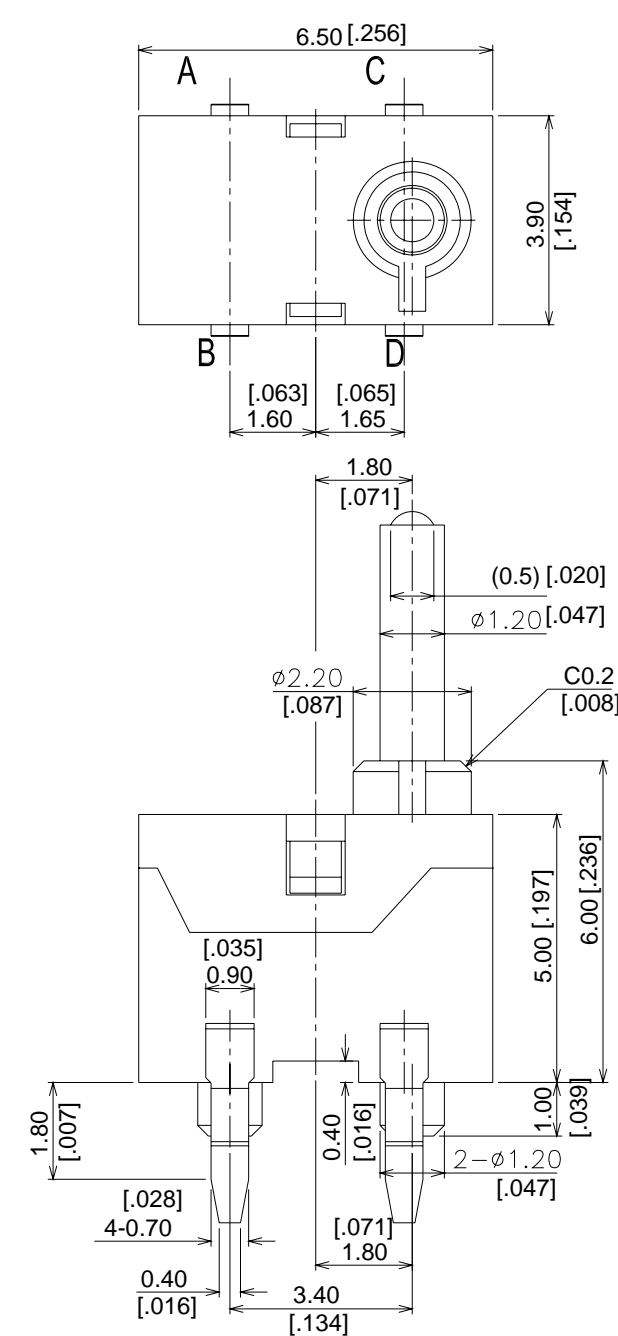
P.C.B. LAYOUT



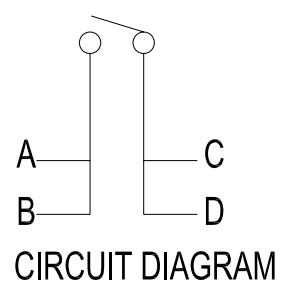
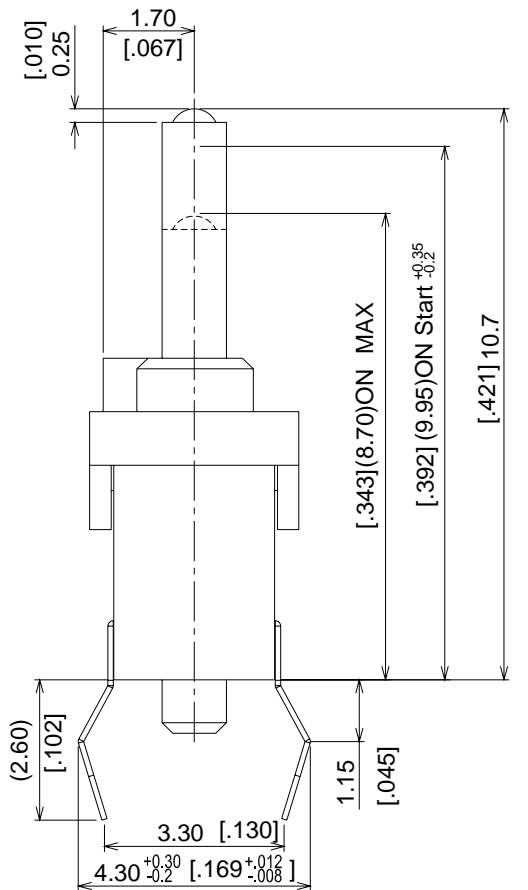
CIRCUIT DIAGRAM

General Tolerance : $\pm 0.2\text{mm}$

TE-HL



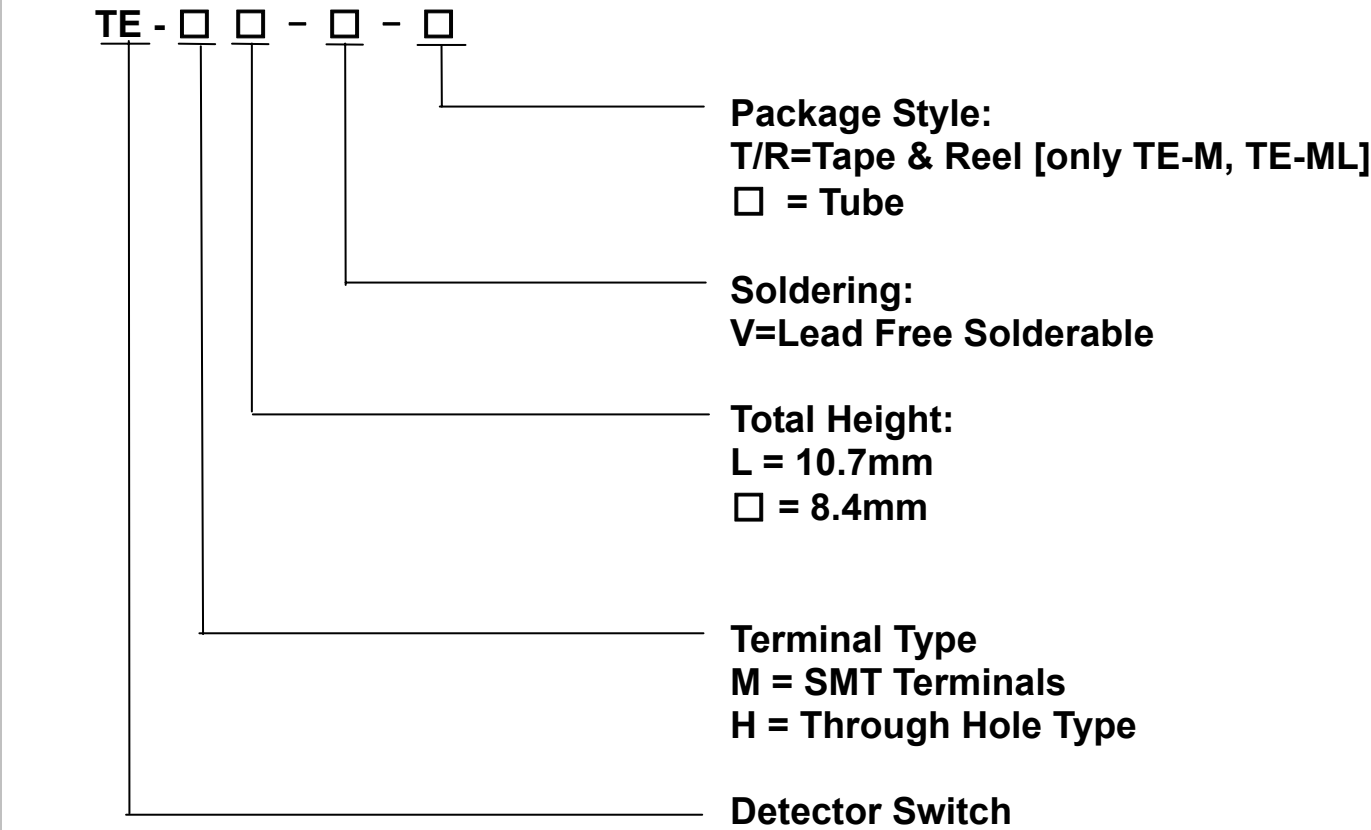
P.C.B. LAYOUT



CIRCUIT DIAGRAM

General Tolerance : $\pm 0.2\text{mm}$

HOW TO ORDER



SPECIFICATION

△MECHANICAL
Operation Force: 30gf max.
Stroke: 2 mm
Operation Temperature: -20℃ to +70℃
Storage Temperature: -30℃ to +80℃

△ELECTRICAL
Electrical Life: 50,000 cycles
Rating: 5mA, 5VDC
Contact Resistance: 500MΩ max.
Insulation Resistance: 100MΩ min. at 250VDC
Dielectric Strength: 250VAC/ minute
Contact Arrangement: SPST
Contact Arrangement: 1pole 1throw

MATERIAL

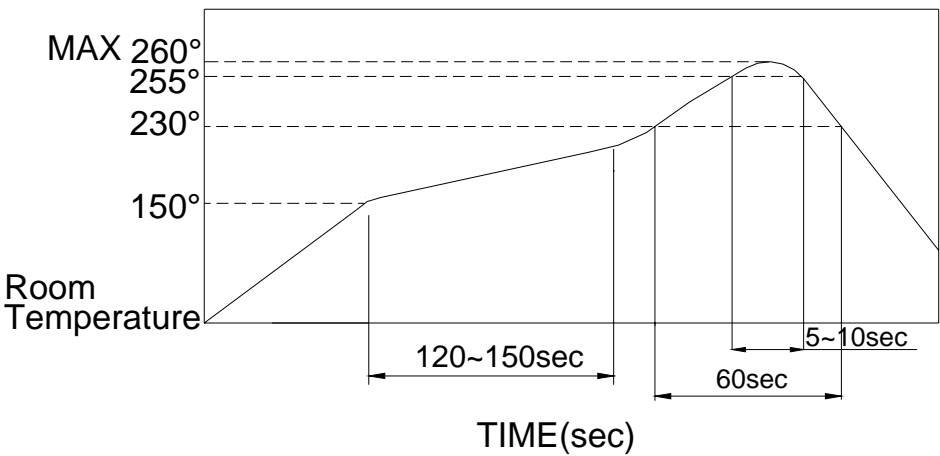
△COVER: UL 94V-0 LCP High-temp thermoplastic
Color: Black
△BASE: UL 94V-0 LCP High-temp thermoplastic
Color: Black
△CONTACT DISC: Stainless steel with silver cladding
△TERMINAL: Phosphor bronze with silver plated

SOLDERING PROCESS

For best results, please follow these recommend conditions :

- △HAND SOLDERING : Use a soldering iron of 30 watts, controlled at 608°F(320℃) approximately 2 seconds.
- △WAVE SOLDERING: Recommended solder temperature at 500°F (260℃) max. 5 seconds for through hole type.
- △REFLOW SOLDERING: When applying reflow soldering, the peak temperature or the reflow oven should be set at 260℃ max.
- △Make sure that there is no flux rise on the surface of The PCB.

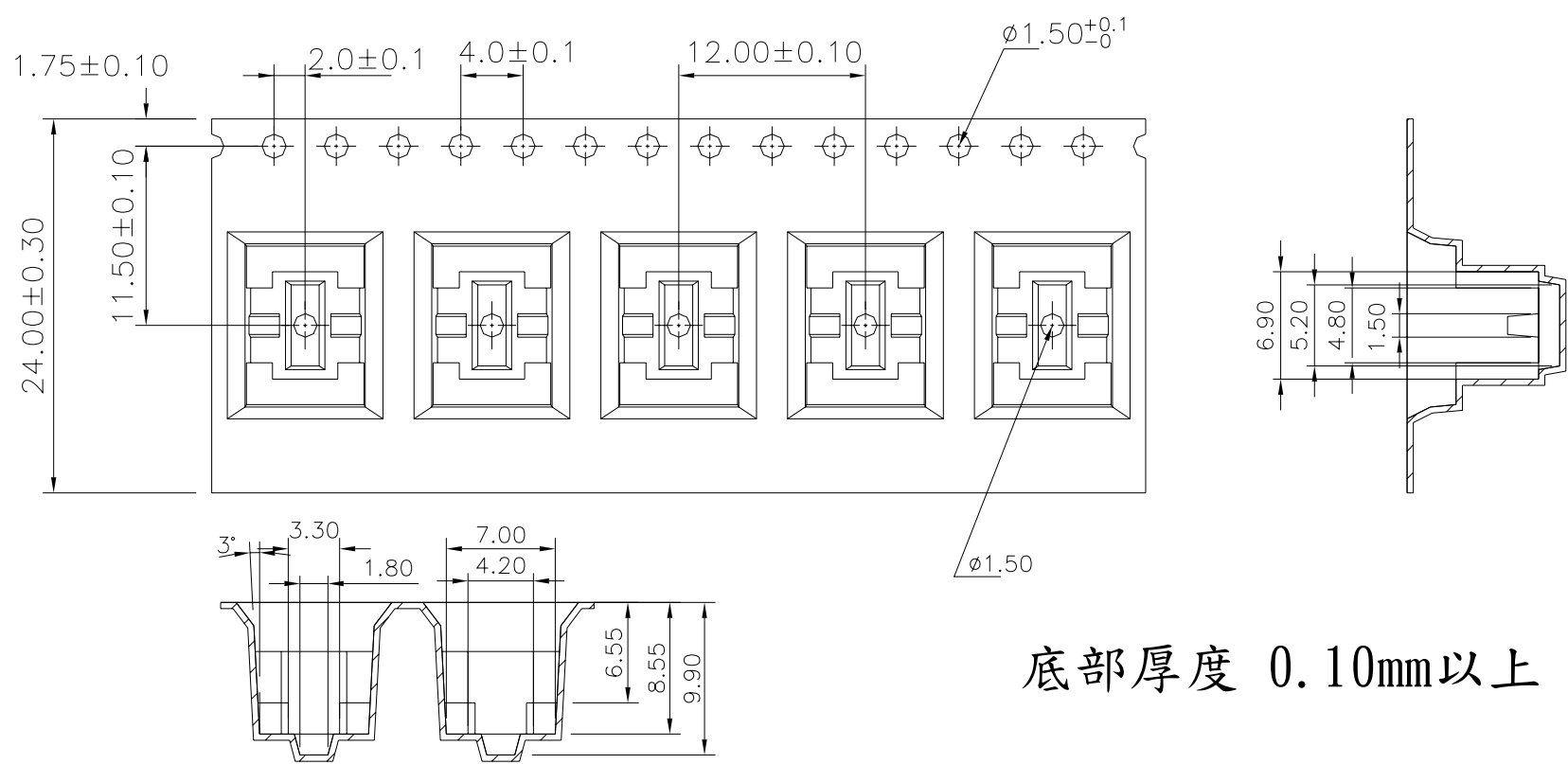
△Reflow Temperature Profile:



PACKING

Part Number	Number Per Tube	Number Per Reel
TE-M	72	500
TE-H	72	-
TE-ML	-	400

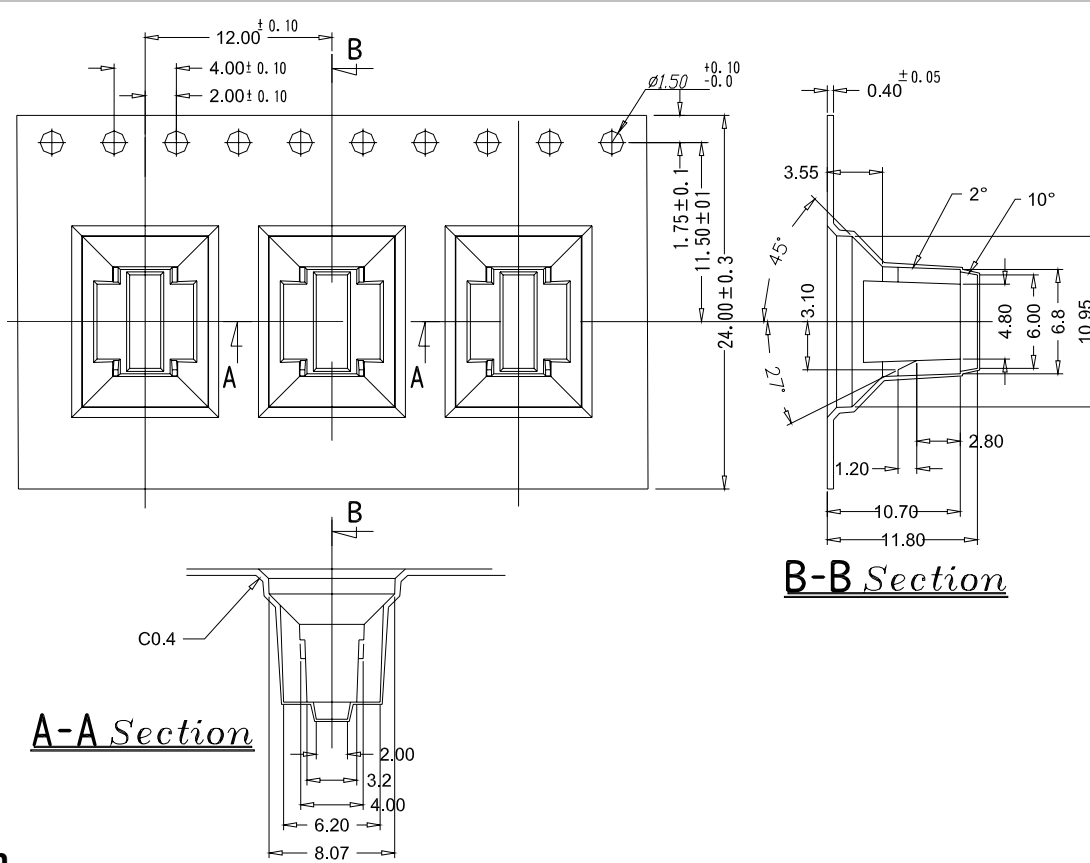
TE-M REEL



底部厚度 0.10mm以上

General Tolerance : $\pm 0.1\text{mm}$

TE-ML REEL

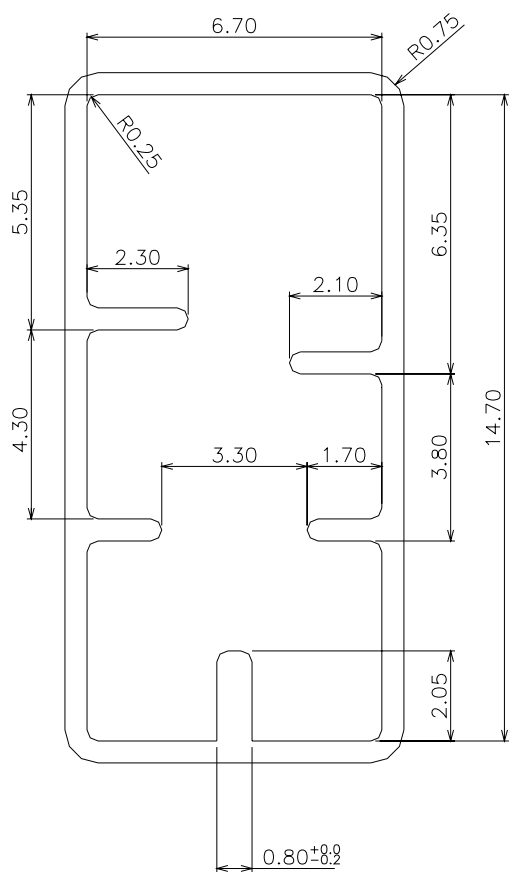


B-B Section

A-A Section

General Tolerance : $\pm 0.1\text{mm}$

TUBE



General Tolerance : $\pm 0.2\text{mm}$