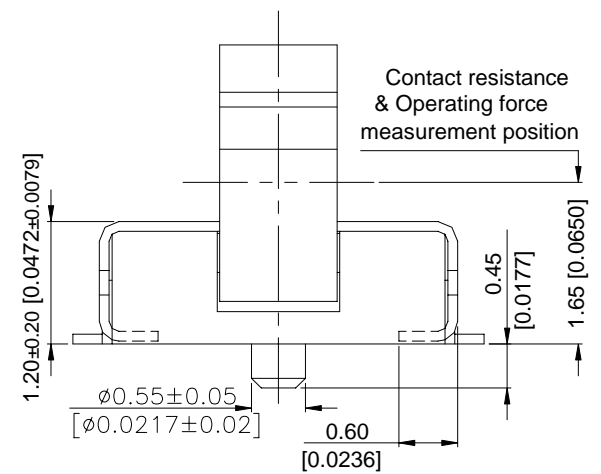
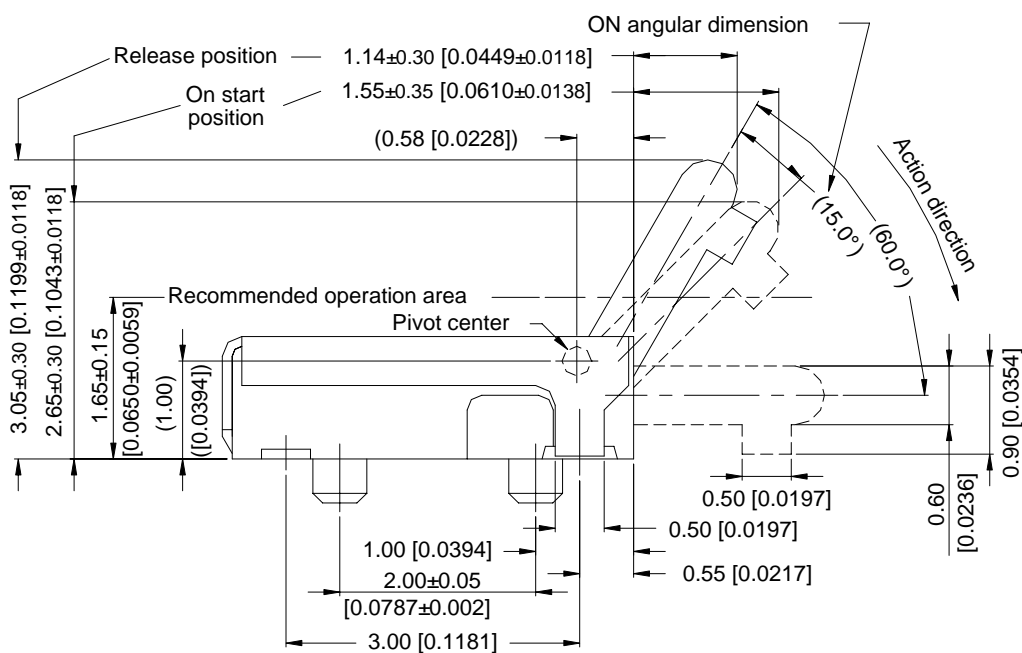
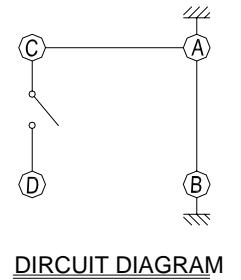
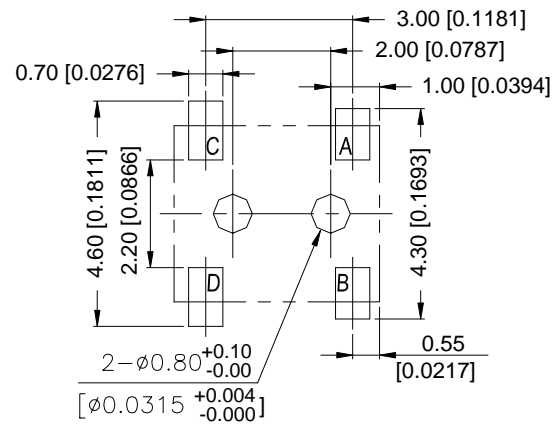
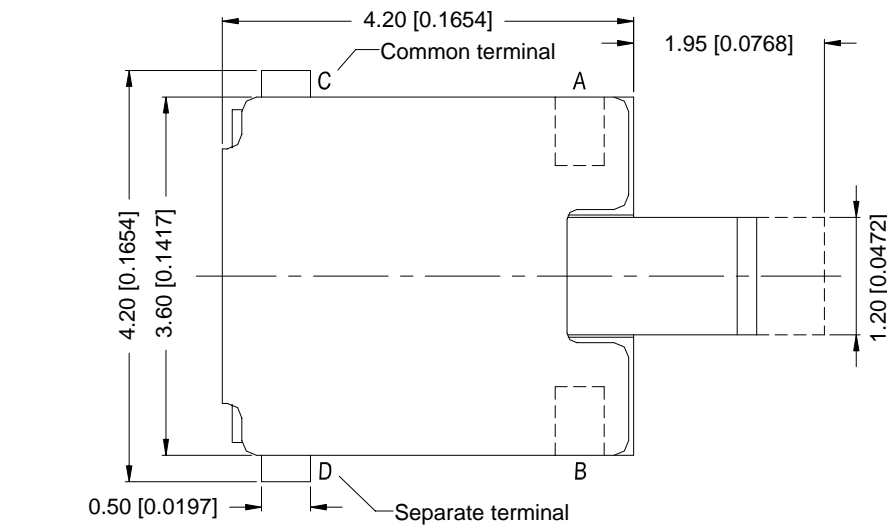


TU SERIES

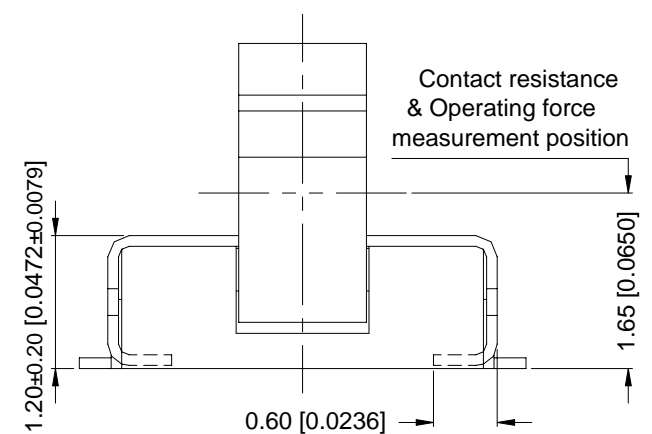
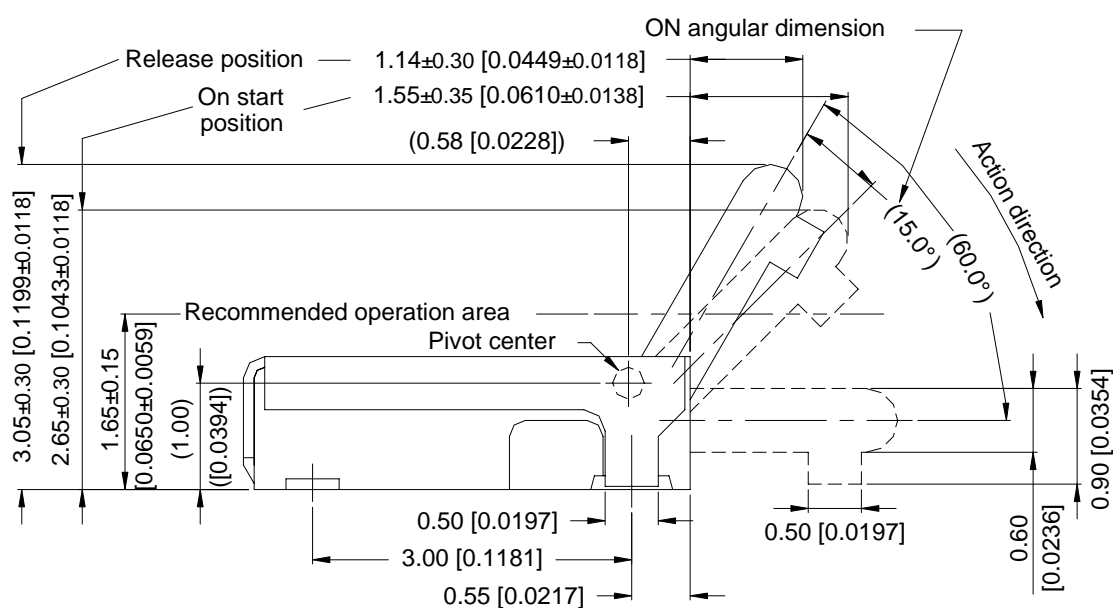
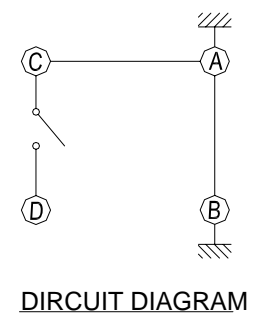
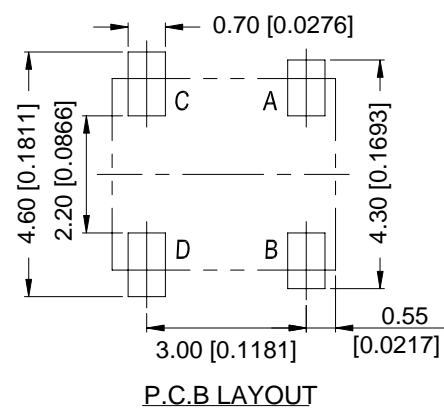
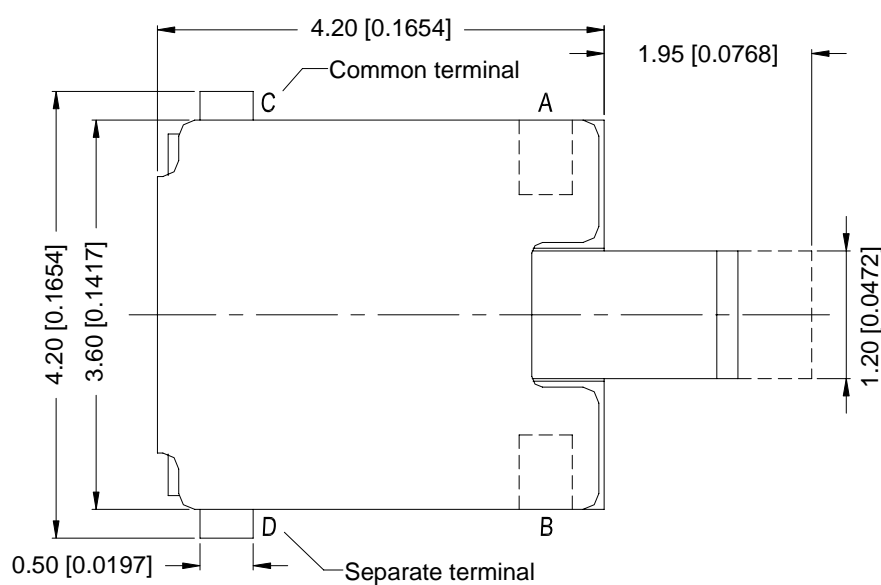
DIMENSIONS

TU-UCF-V



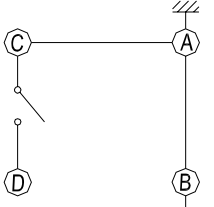
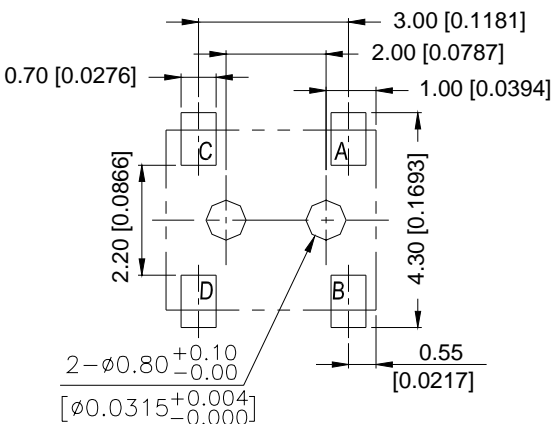
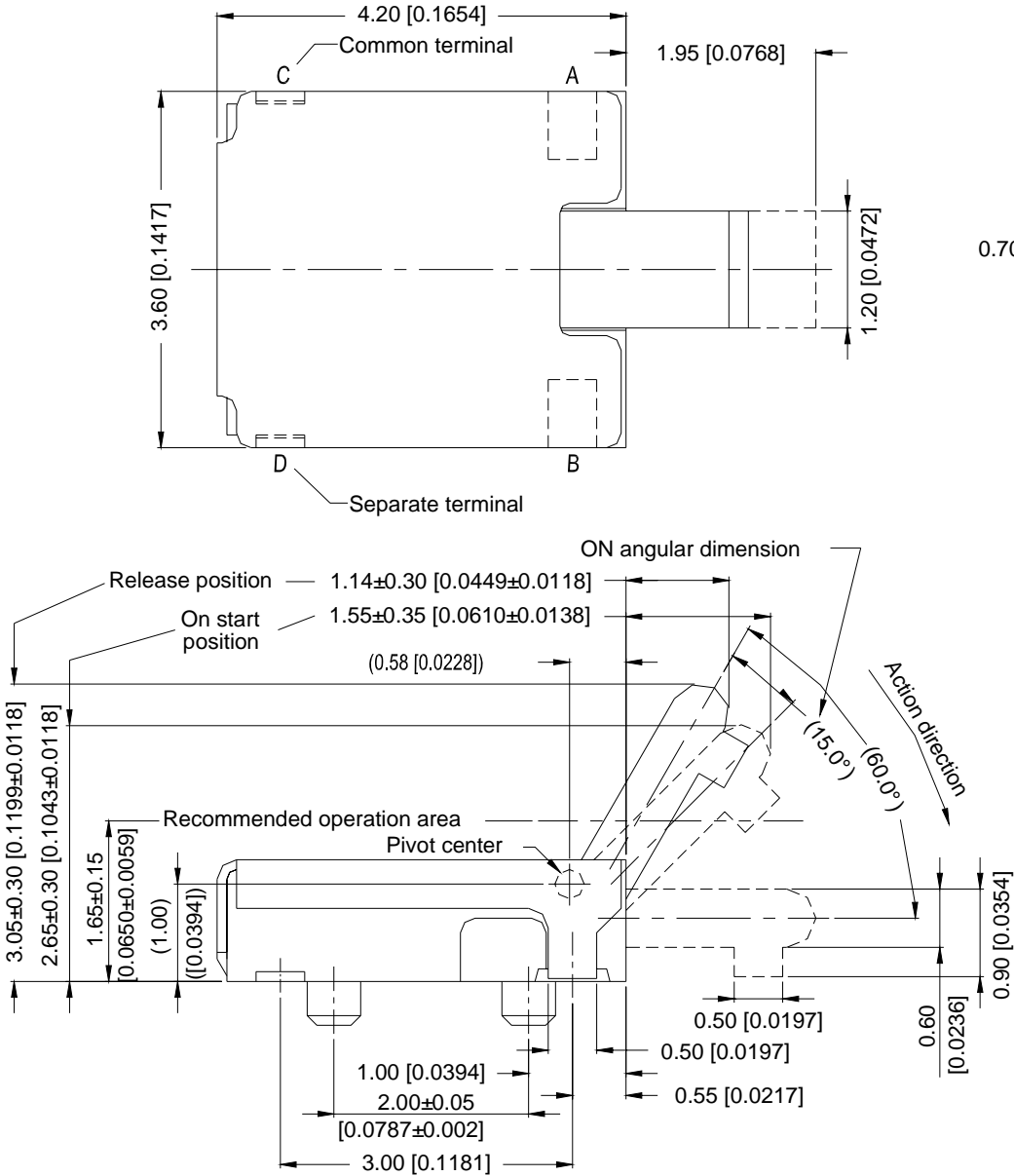
General Tolerance : $\pm 0.2\text{mm}$.

TU-UF-V

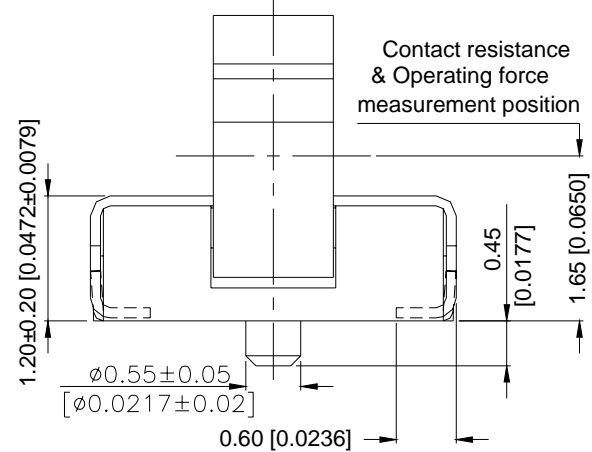


General Tolerance : $\pm 0.2\text{mm}$.

TU-UCL-V

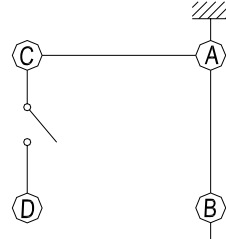
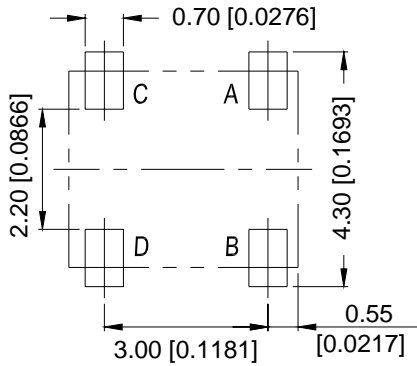
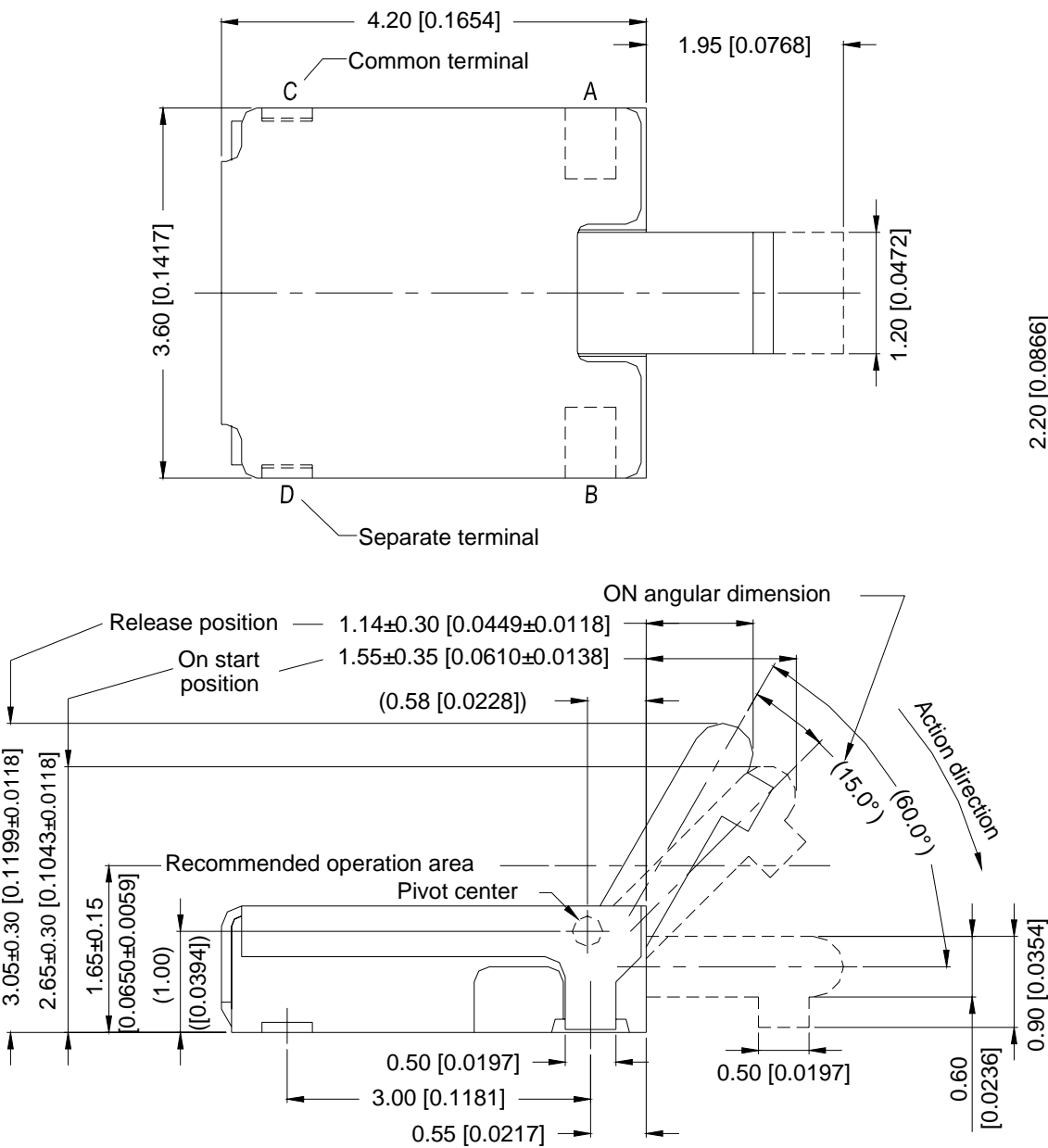


P.C.B LAYOUT

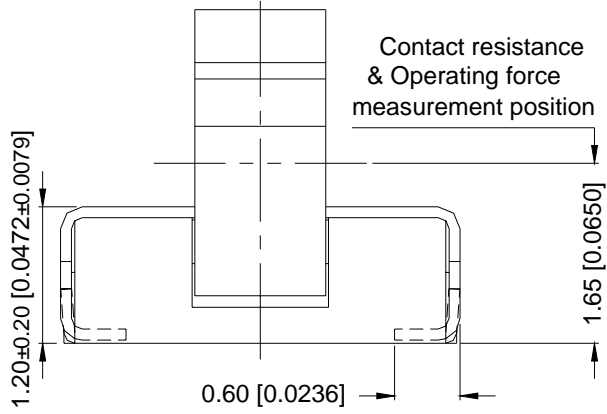


General Tolerance : ±0.2mm.

TU-UL-V

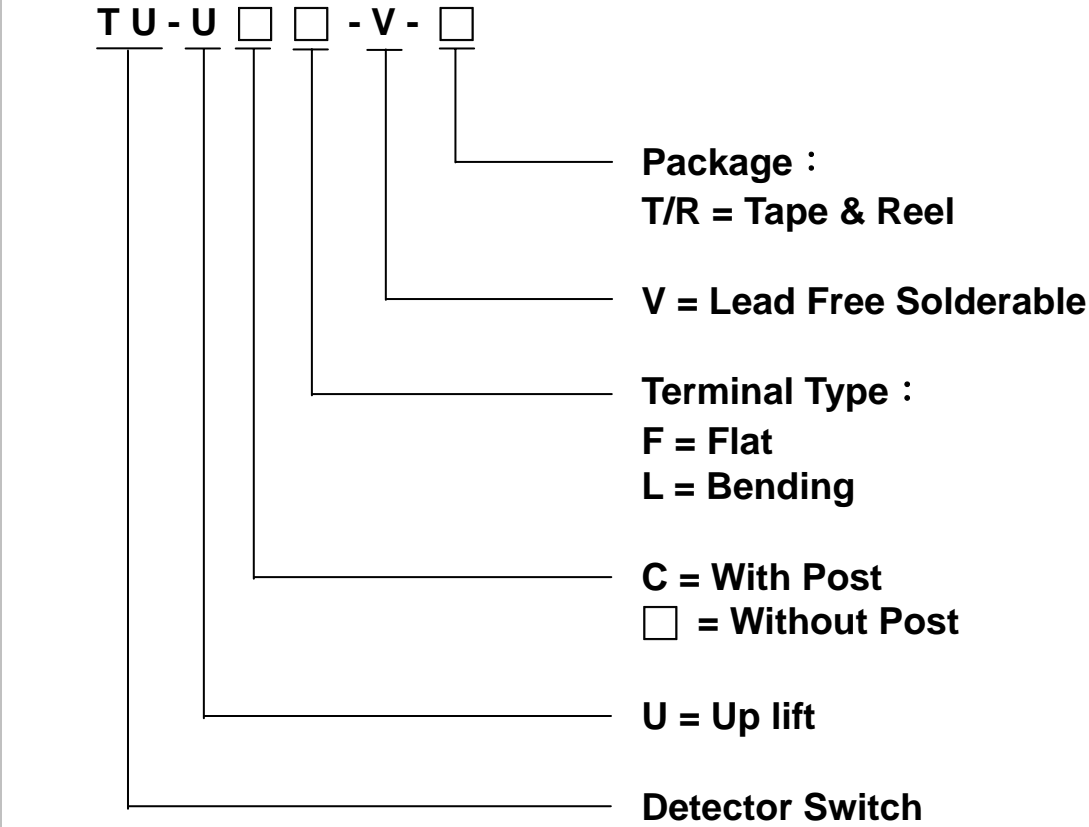


P.C.B LAYOUT



General Tolerance : ±0.2mm.

HOW TO ORDER



SPECIFICATION

△MECHANICAL
Mechanical Life: 50,000 operations.
Operation Force: 40gf max.
Operation Temperature: -10℃ to +60℃
Storage Temperature: -20℃ to +70℃

△ELECTRICAL
Electrical Life:50,000 cycles.
Rating: 1 mA 5 V DC.
Contact Resistance: 1 Ω max.
Insulation Resistance:100MΩ min
Dielectric Strength: 100V AC/1 minute.
Contact Arrangement: 1pole 1throw

MATERIAL

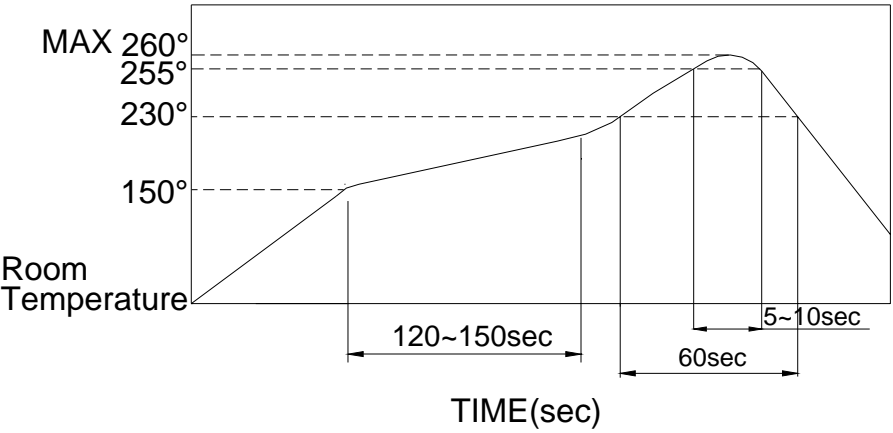
△COVER : Nickel Silver
△STEM(1) : UL94V-0 PA9T High-Temp Thermoplastic.
Color: Black.
△STEM(2) : UL94V-0 PA9T High-Temp Thermoplastic.
Color: Black.
△CONTACT : Alloy Copper , gold plated.
△BASE : UL94V-0 PA9T High-Temp Thermoplastic.
Color: Black.
△TERMINAL : Brass , gold plated.

SOLDERING PROCESSES

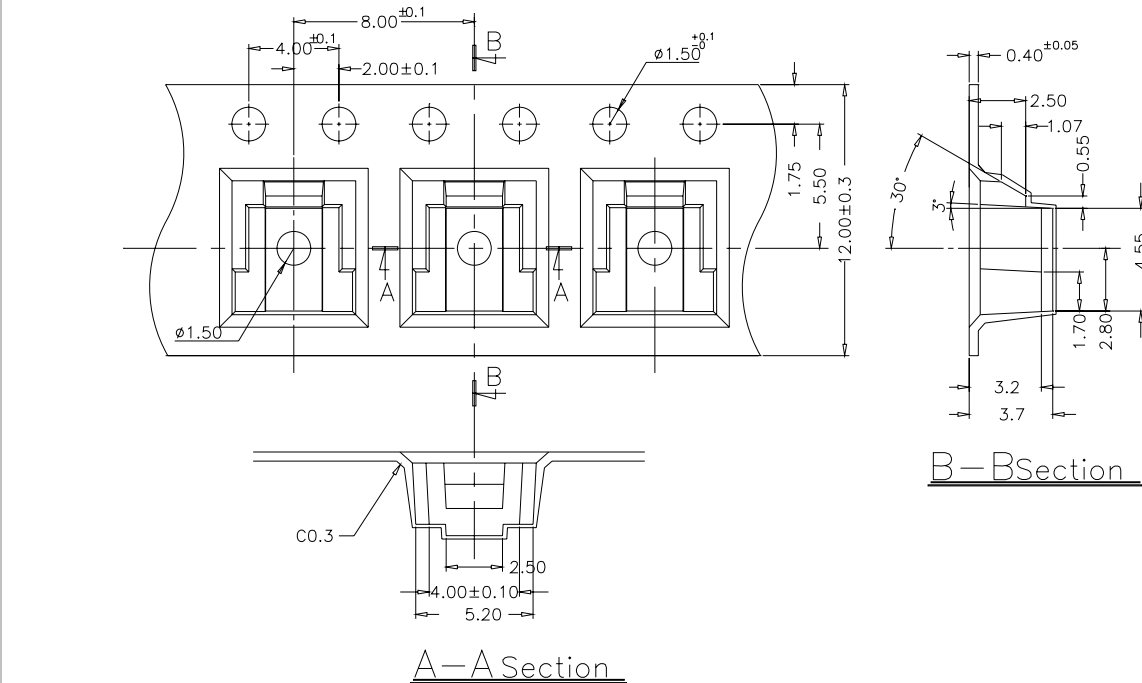
△HAND SOLDERING : Use a soldering iron of 30 watts, controlled at 350℃ approximately max 5 seconds while applying.

△REFLOW SOLDERING: When applying reflow soldering, the peak temperature or the reflow Oven should be set at 260℃ max.

△Reflow Temperature Profile:



PACKING



Part Number	Number Per Tube	Number Per Reel
TU-□□□-V	-	2300

General Tolerance : ±0.1mm