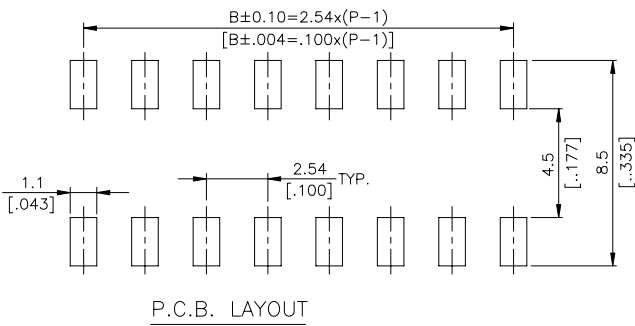
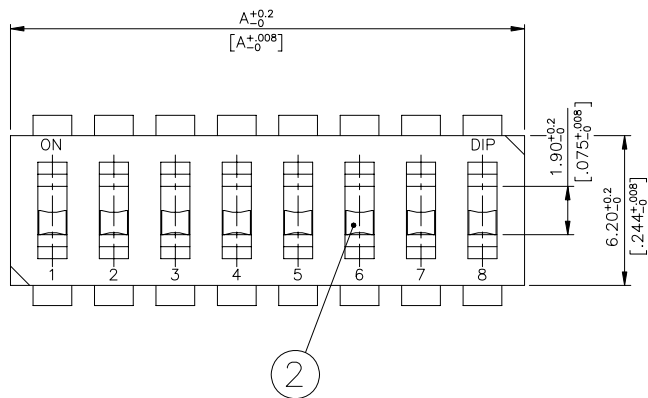



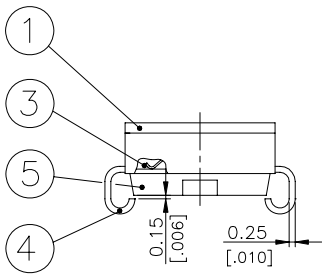
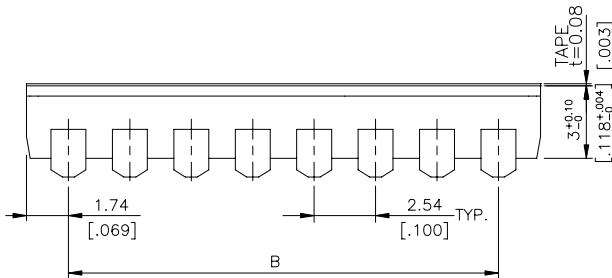
DL(R)&DJ(R) SERIES



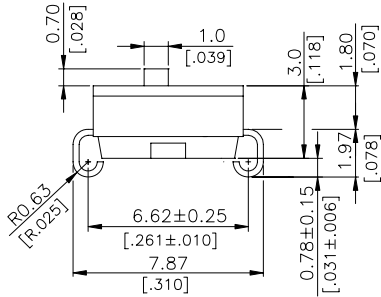
DJ(R)



DJ -12 DJR-12	12	31.42[1.237]	27.94[1.100]
DJ -10 DJR-10	10	26.34[1.037]	22.86[.900]
DJ -09 DJR-09	9	23.80[.937]	20.32[.800]
DJ -08 DJR-08	8	21.26[.837]	17.78[.700]
DJ -07 DJR-07	7	18.72[.737]	15.24[.600]
DJ -06 DJR-06	6	16.18[.637]	12.70[.500]
DJ -05 DJR-05	5	13.64[.537]	10.16[.400]
DJ -04 DJR-04	4	11.10[.437]	7.62[.300]
DJ -03 DJR-03	3	8.56[.337]	5.08[.200]
DJ -02 DJR-02	2	6.02[.237]	2.54[.100]
PROD. NO.	NO. OF POS.	DIM. A	DIM. B
SCHEMATIC(TYP.)			
			
(1,2,3,4,5,6,7,8,9,10,12,POS AVAIL)			



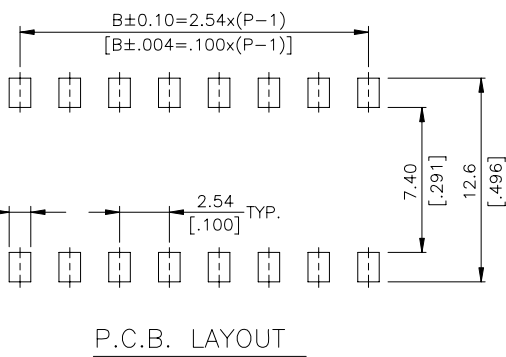
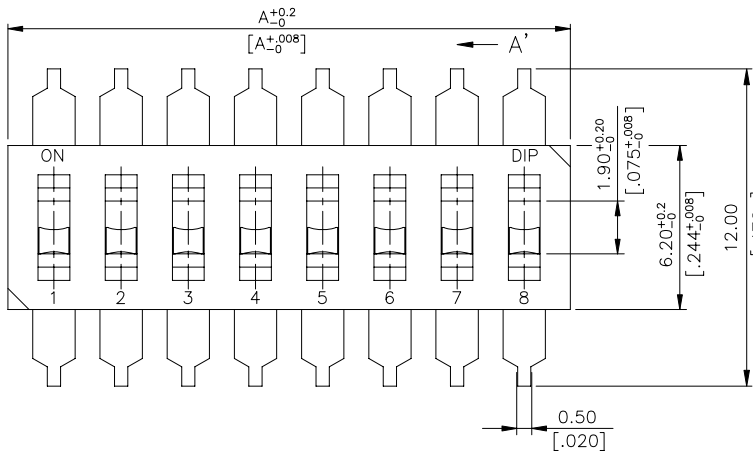
DJR SERIES




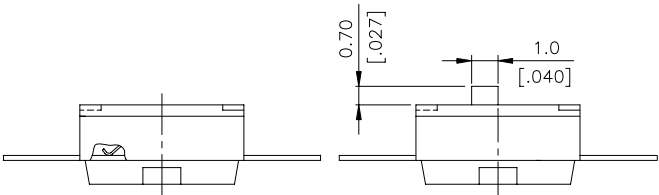
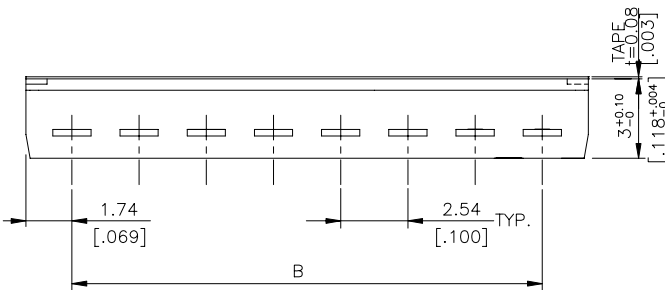
DJ SERIES

General Tolerance : ±0.2mm

DL(R)



DL -12(A)(P) DLR-12(A)(P)	12	31.42[1.237]	27.94[1.100]
DL -10(A)(P) DLR-10(A)(P)	10	26.34[1.037]	22.86[.900]
DL -09(A)(P) DLR-09(A)(P)	9	23.80[.937]	20.32[.800]
DL -08(A)(P) DLR-08(A)(P)	8	21.26[.837]	17.78[.700]
DL -07(A)(P) DLR-07(A)(P)	7	18.72[.737]	15.24[.600]
DL -06(A)(P) DLR-06(A)(P)	6	16.18[.637]	12.70[.500]
DL -05(A)(P) DLR-05(A)(P)	5	13.64[.537]	10.16[.400]
DL -04(A)(P) DLR-04(A)(P)	4	11.10[.437]	7.62[.300]
DL -03(A)(P) DLR-03(A)(P)	3	8.56[.337]	5.08[.200]
DL -02(A)(P) DLR-02(A)(P)	2	6.02[.237]	2.54[.100]
DL -01(A)(P) DLR-01(A)(P)	2	3.48[.137]	
PROD. NO.	NO. OF POS.	DIM. A	DIM. B
SCHEMATIC(TYP.)			
			
(1,2,3,4,5,6,7,8,9,10,12,POS AVAIL)			



DLR SERIES

DL SERIES

General Tolerance : ±0.2mm

HOW TO ORDER

□ □ □ □ - □ - □ - □ - □

Package Style:
B = Tube Except DL(R)
T/R= Tape & Reel
□=Bulk pack

Soldering:
V = Lead Free Solderable

Seal:
□ = Regular
T = Top Tape Sealed <Recessed Actuator Only>

Number Of Positions:
01 = 1 Position Except DJ(R)-01
02 = 2 Position
03 = 3 Position
04 = 4 Position
05 = 5 Position
06 = 6 Position
07 = 7 Position
08 = 8 Position
09 = 9 Position
10 = 10 Position
12 = 12 Position

Actuator Type:
□ = Raised Actuator
R = Recessed Actuator

DJ = J Bend Terminal S.M.T
DL = Flat Terminal S.M.T

SPECIFICATION

△MECHANICAL
Mechanical Life: 2,000 operations per switch.
Operation Force: 1,000gf max.
Stroke: 1.0 mm
Operation Temp: -20℃ to +85℃
Storage Temperature: -40℃ to +85℃

△ELECTRICAL
Electrical Life: 2,000 operations min. per switch 24VDC, 25mA
Non-switching Rating: 100mA, 50VDC
Switching Rating: 25mA, 24VDC
Contact resistance: (a) 50mΩ max. at initial
(b) 100mΩ max. after life test
Insulation Resistance: 100MΩ min. 500VDC
Dielectric Strength: 500VAC/ minute
Capacitance: 5pF max.
Circuit: Single pole single throw.

MATERIAL

△BASE & COVER: UL94V-0 PPS High-Temp.
Thermoplastic, Color: Black
△ACTUATOR: UL94V-0 Nylon High-Temp Thermoplastic
(V-option only for DL(R) 、 DJ(R))
Color: White

△CONTACT: Alloy Copper with gold plated
△TERMINAL: Brass with gold plated
▲CONTACT PLATING: Gold plated over nickel.

▲TERMINAL PLATING: Gold plated
△TAPE : KAPTON

SOLDERING PROCESSES

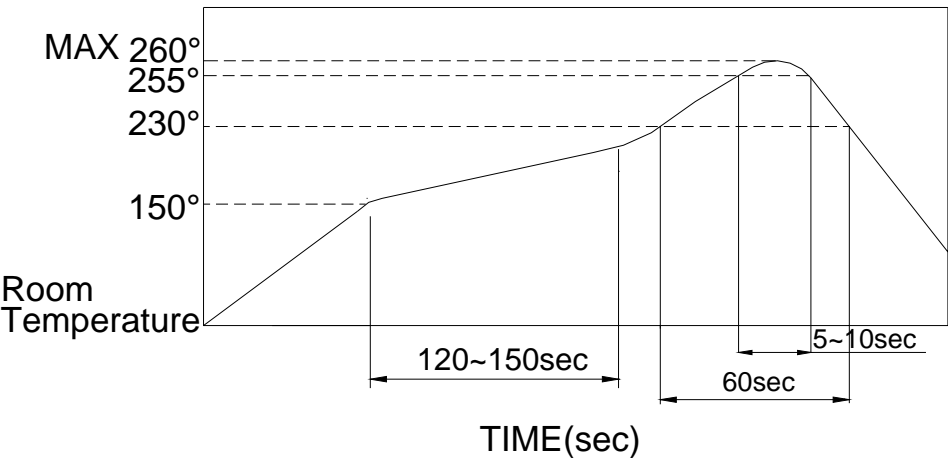
For best results, please follow these recommendation:

△WAVE SOLDERING: Recommended solder temperature at 500°F(260℃) max. of 5 seconds for through hole type.

△HAND SOLDERING : Use a soldering iron of 30 watts, controlled at 350℃ approximately 5 seconds.

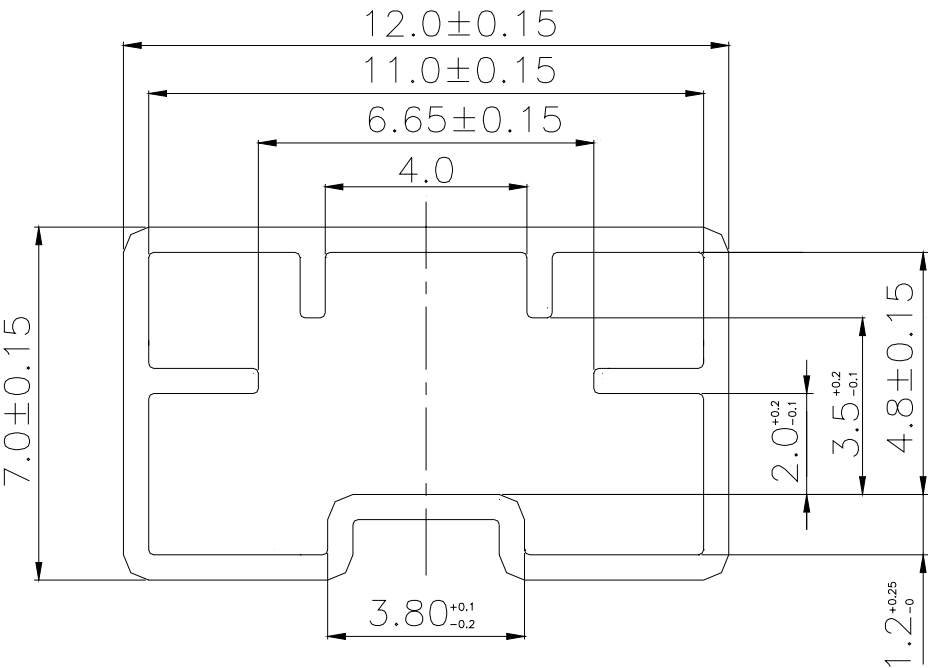
△REFLOW SOLDERING: When applying reflow soldering, the peak temperature or the reflow Oven should be set at 260℃max.

- △Any flux enters the switch may fail the conductivity.
- △Do not clean the switch body except top tape sealed type, which only suitable for spray cleaning method from top of the s/w.



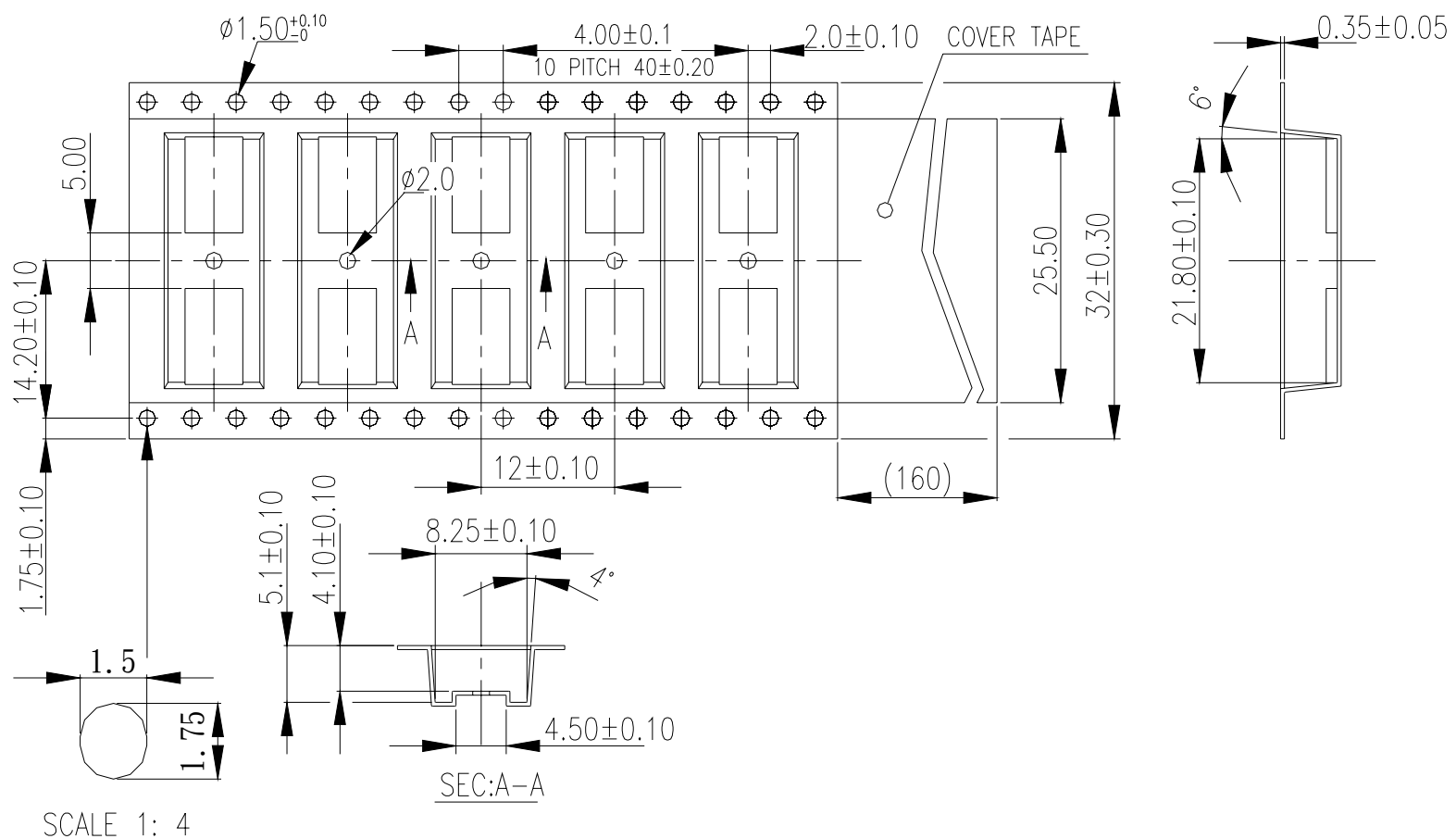
Part Number	Number Per Tube	Part Number	Number Per Reel	Part Number	Number Per Bulk pack	Part Number	Number Per Reel
DJ(R)-02	76	DJ(R)-02	1000	DL(R)-01	500	-	-
DJ(R)-03	55	DJ(R)-03	1000	DL(R)-02	500	-	-
DJ(R)-04	42	DJ(R)-04	1000	DL(R)-03	500	-	-
DJ(R)-05	35	-	-	DL(R)-04	500	DL(R)-04	1000
DJ(R)-06	28	-	-	DL(R)-05	500	-	-
DJ(R)-07	25	-	-	DL(R)-06	500	DL(R)-06	1000
DJ(R)-08	22	DJ(R)-08	1000	DL(R)-07	500	-	-
DJ(R)-09	20	DJ(R)-09	1000	DL(R)-08	500	-	-
DJ(R)-10	18	DJ(R)-10	1000	DL(R)-09	500	-	-
DJ(R)-12	15	-	-	DL(R)-10	500	-	-
				DL(R)-12	500	-	-

PACKING
DJ(R) TUBE



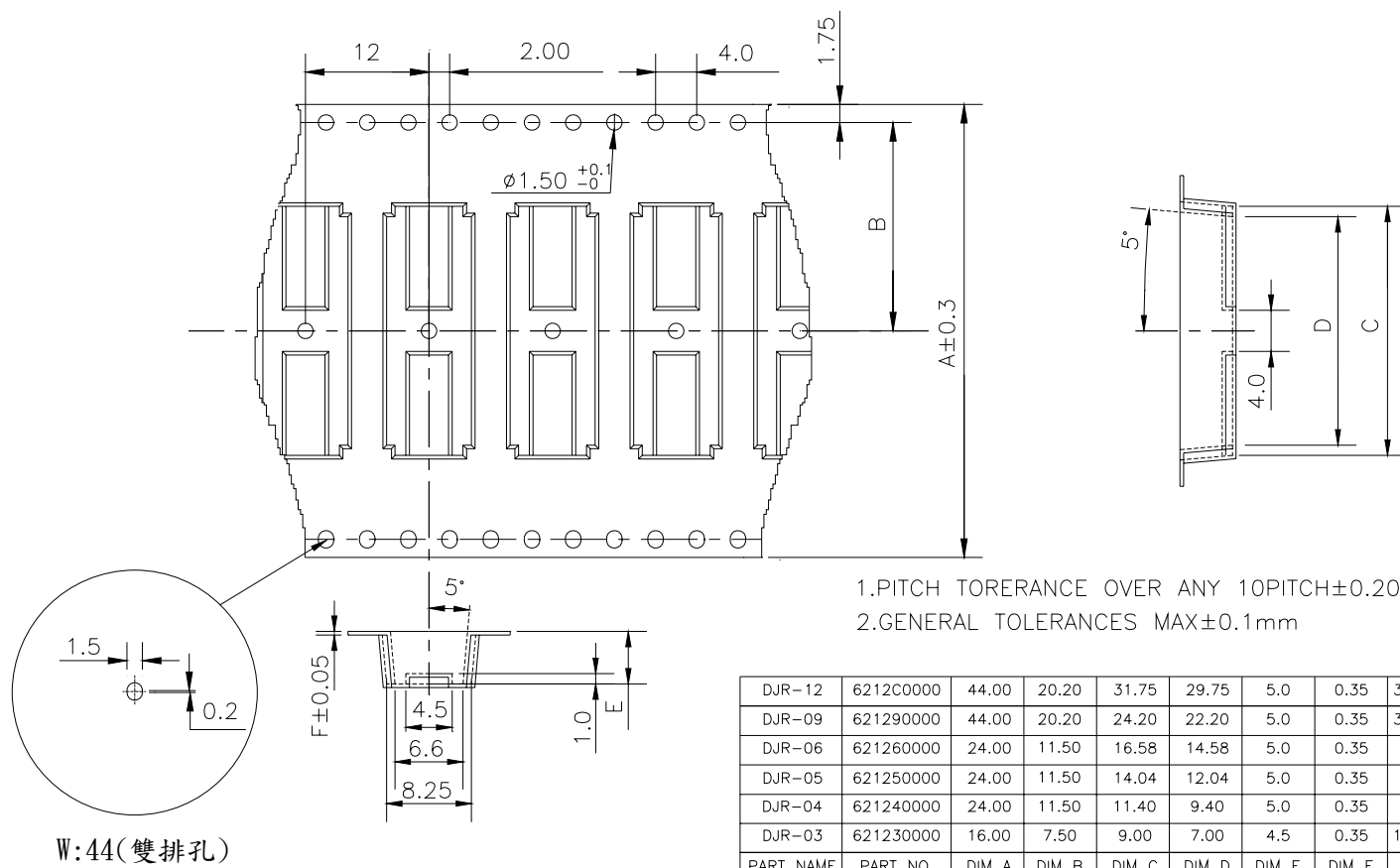
General Tolerance : ±0.2mm

DJR-08 REEL



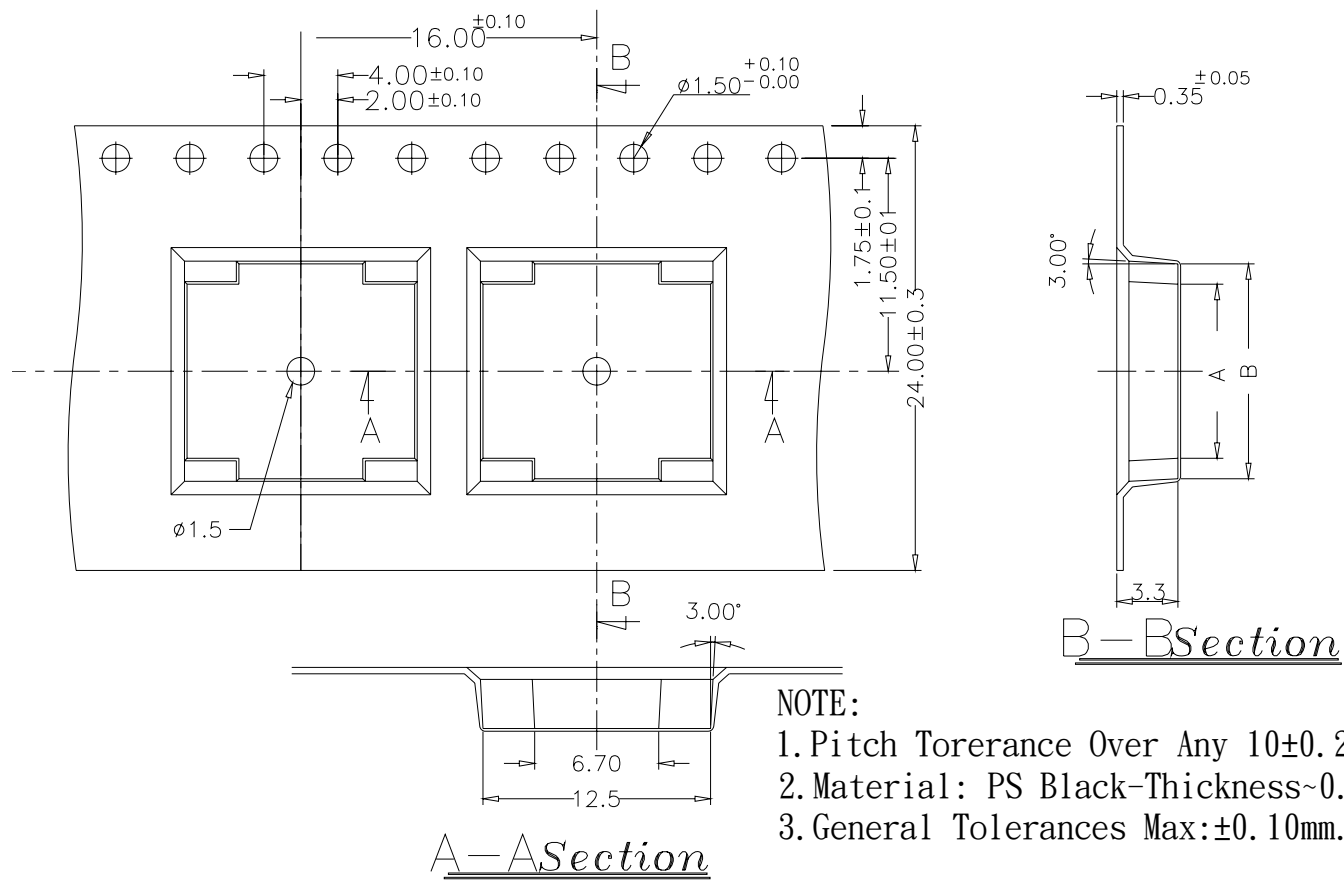
General Tolerance : $\pm 0.1\text{mm}$

DJR-02、03、04、09



General Tolerance : $\pm 0.1\text{mm}$

DLR-02、04



DL(R)-06	623060000	14.5	16.7
DL(R)-04	623040000	9.40	11.6
PART NO:		A	B