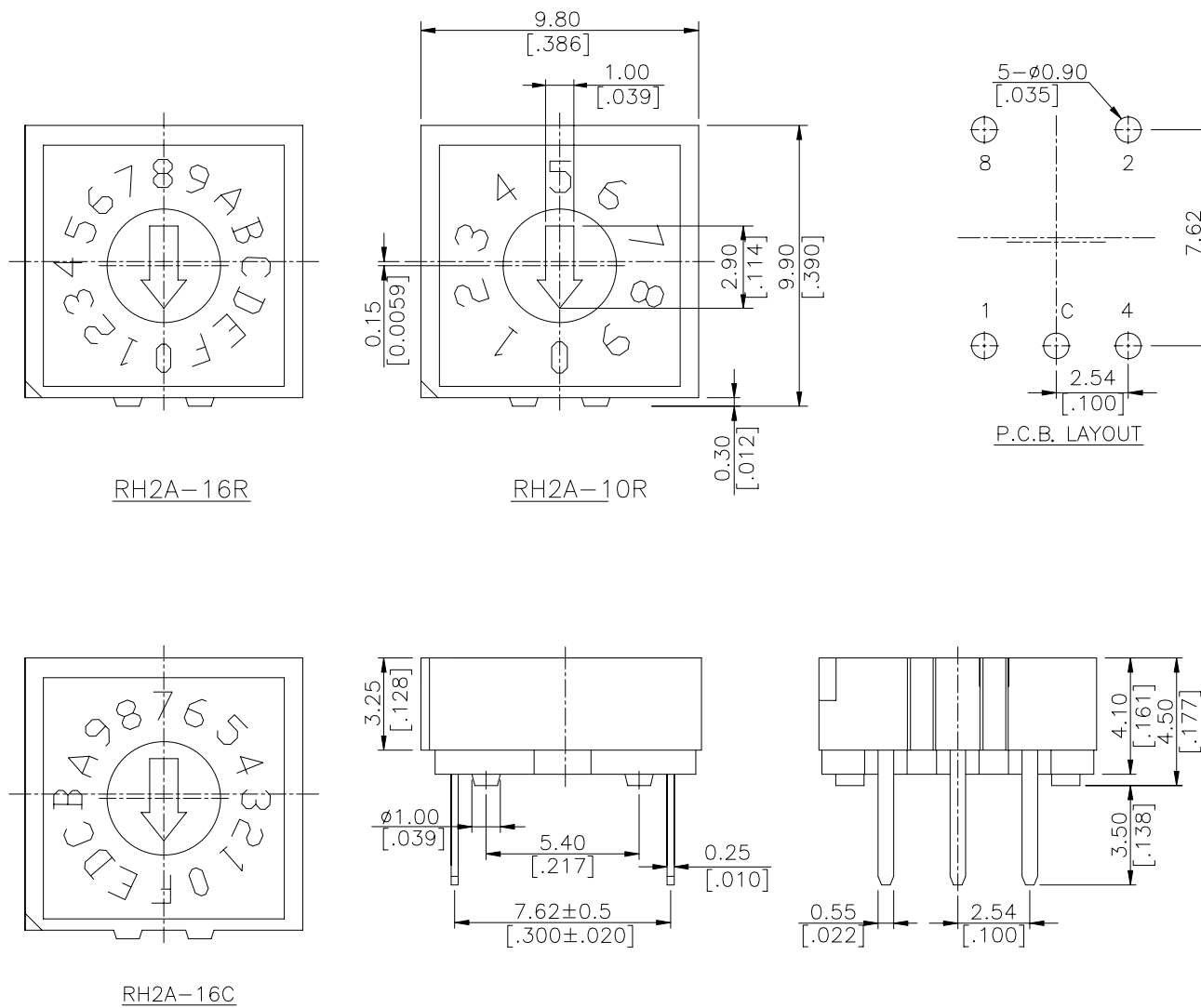


ROTARY SERIES

DIMENSIONS

RH2

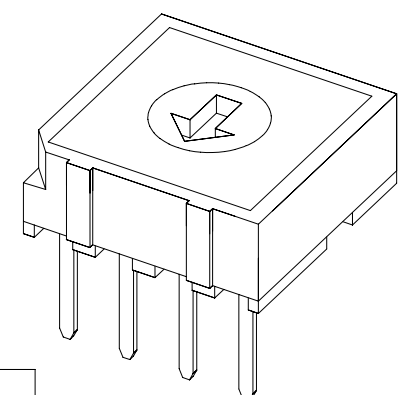
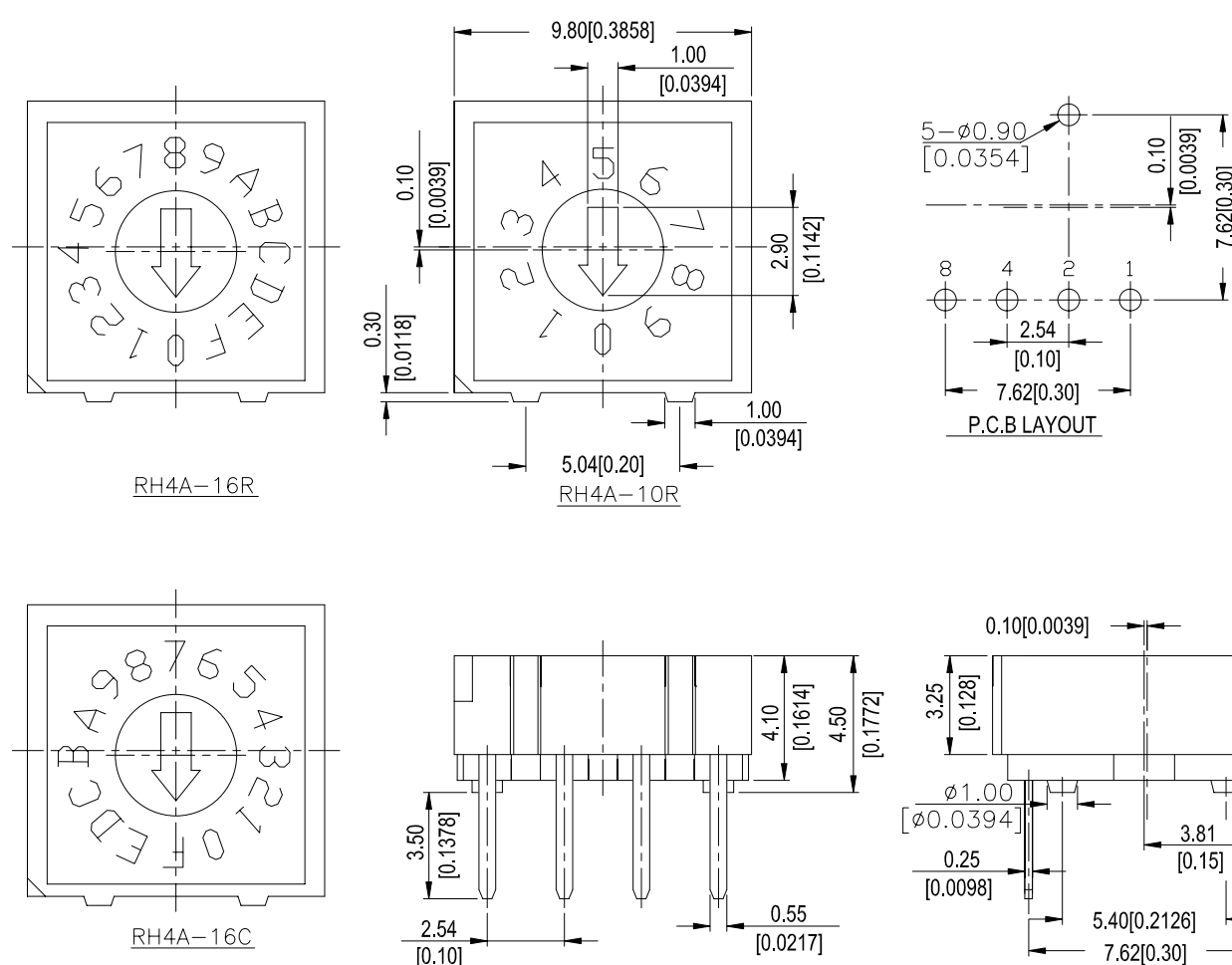


○ REAL CODE

POSITION	CODE			
	1	2	4	8
0	●	●	●	●
1	○	●	●	●
2	●	○	●	●
3	○	○	●	●
4	●	●	○	●
5	○	●	○	●
6	●	○	○	●
7	○	○	○	●
8	●	●	●	○
9	○	●	●	○
A	●	○	●	○
B	○	○	●	○
C	●	●	○	○
D	○	●	○	○
E	●	○	○	○
F	○	○	○	○

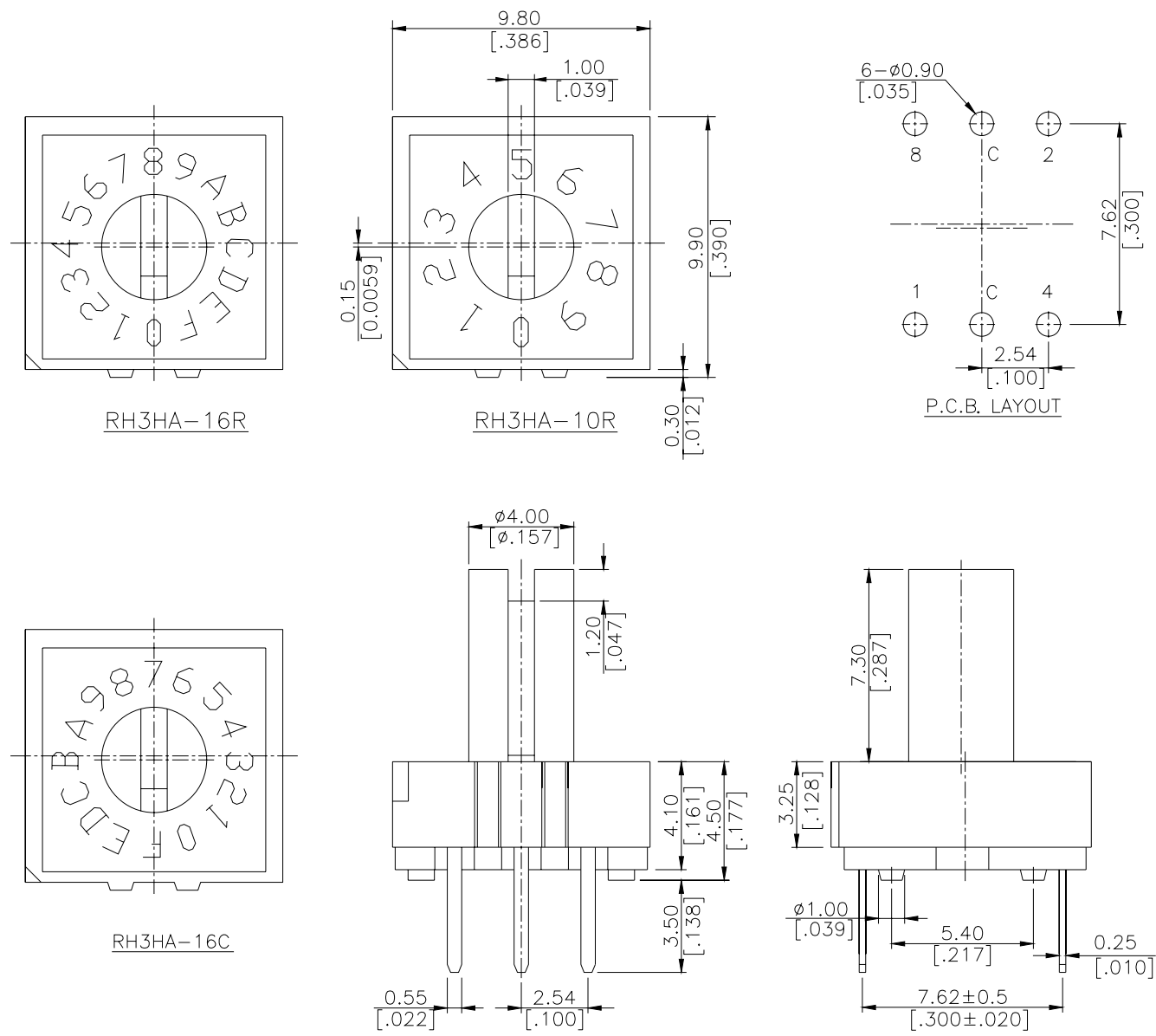
General Tolerance : $\pm 0.2\text{mm}$

RH4



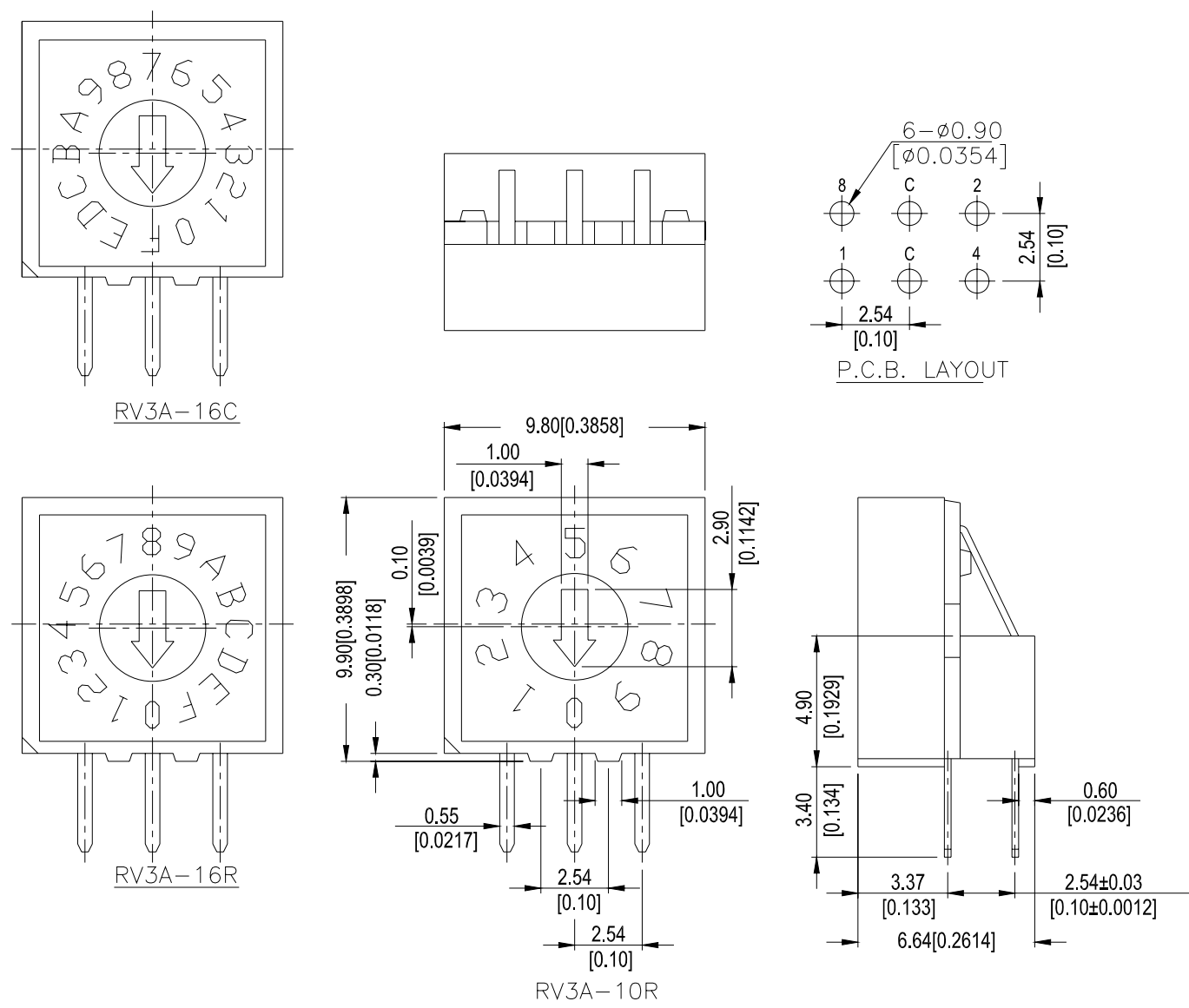
General Tolerance : $\pm 0.2\text{mm}$

RH3H



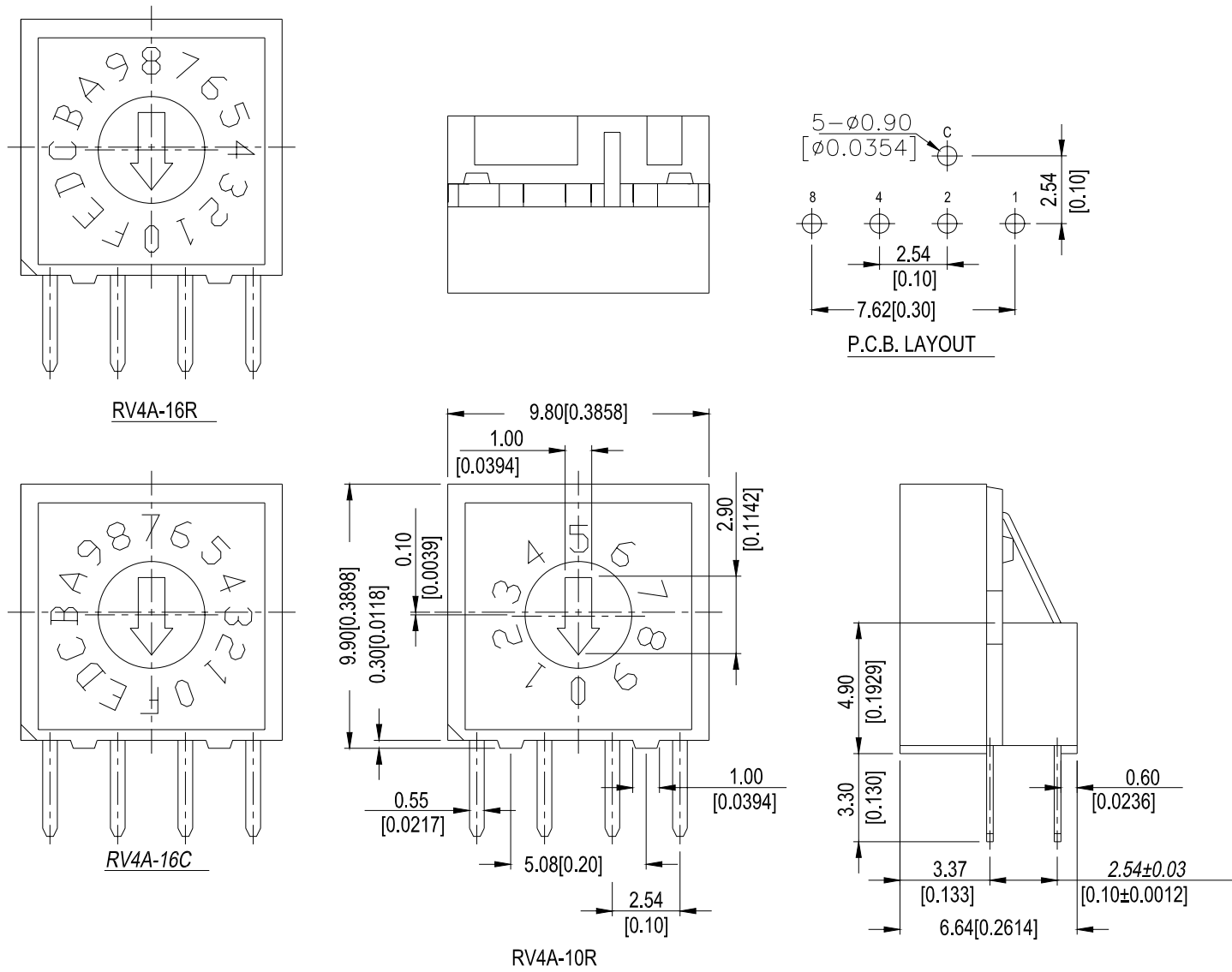
General Tolerance : $\pm 0.2\text{mm}$

RV3



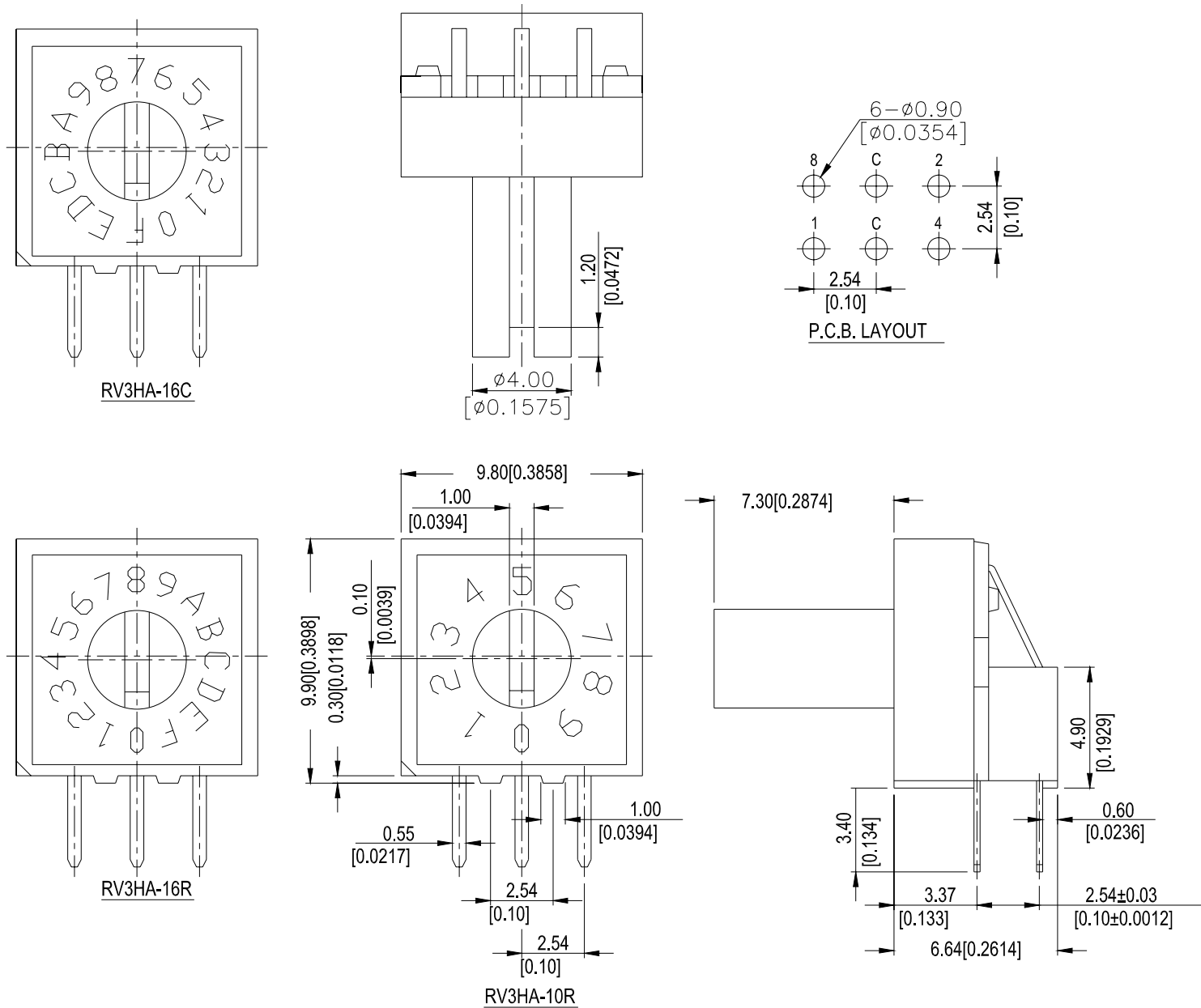
General Tolerance : $\pm 0.2\text{mm}$

RV4



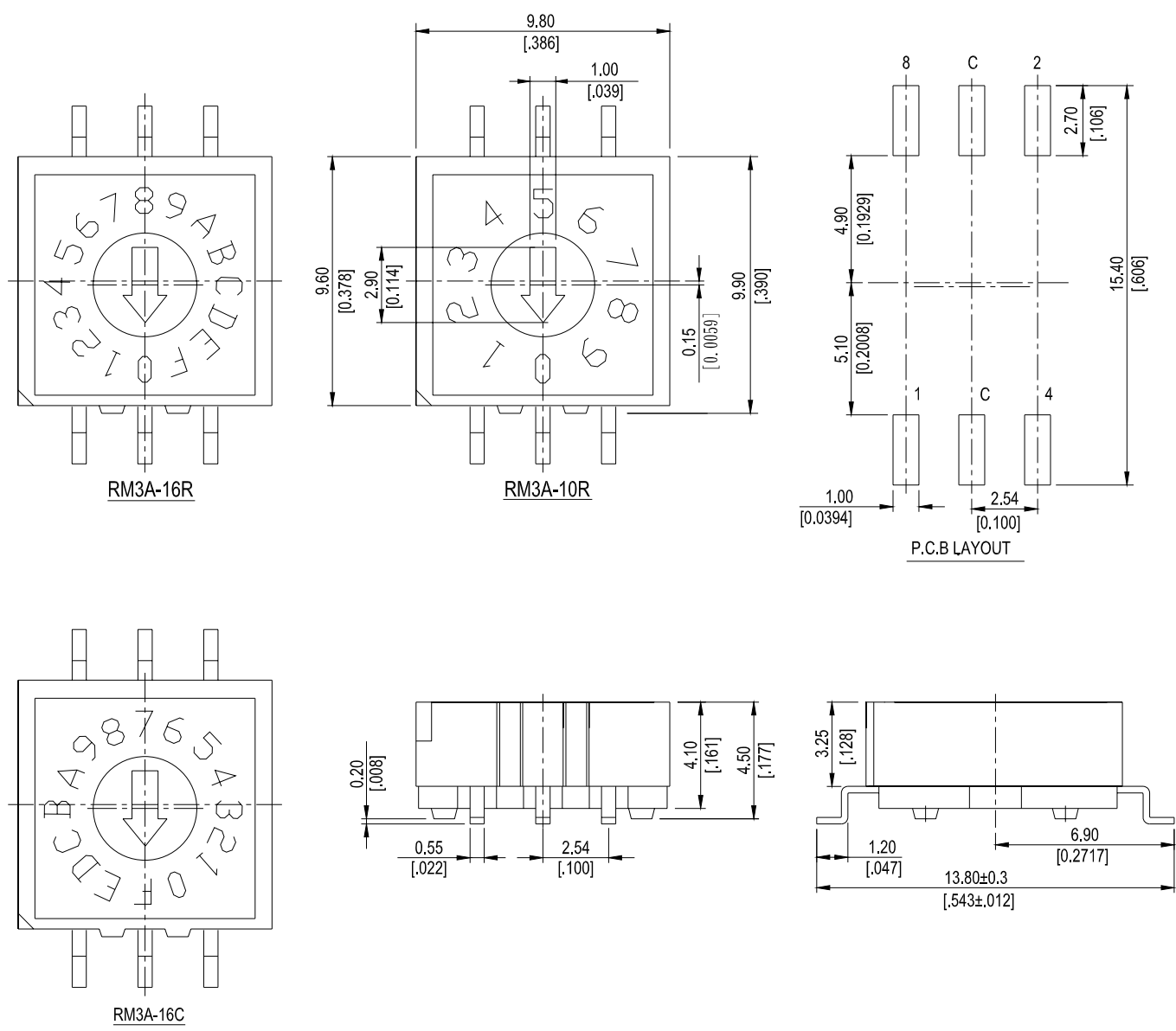
General Tolerance : ±0.2mm

RV3H



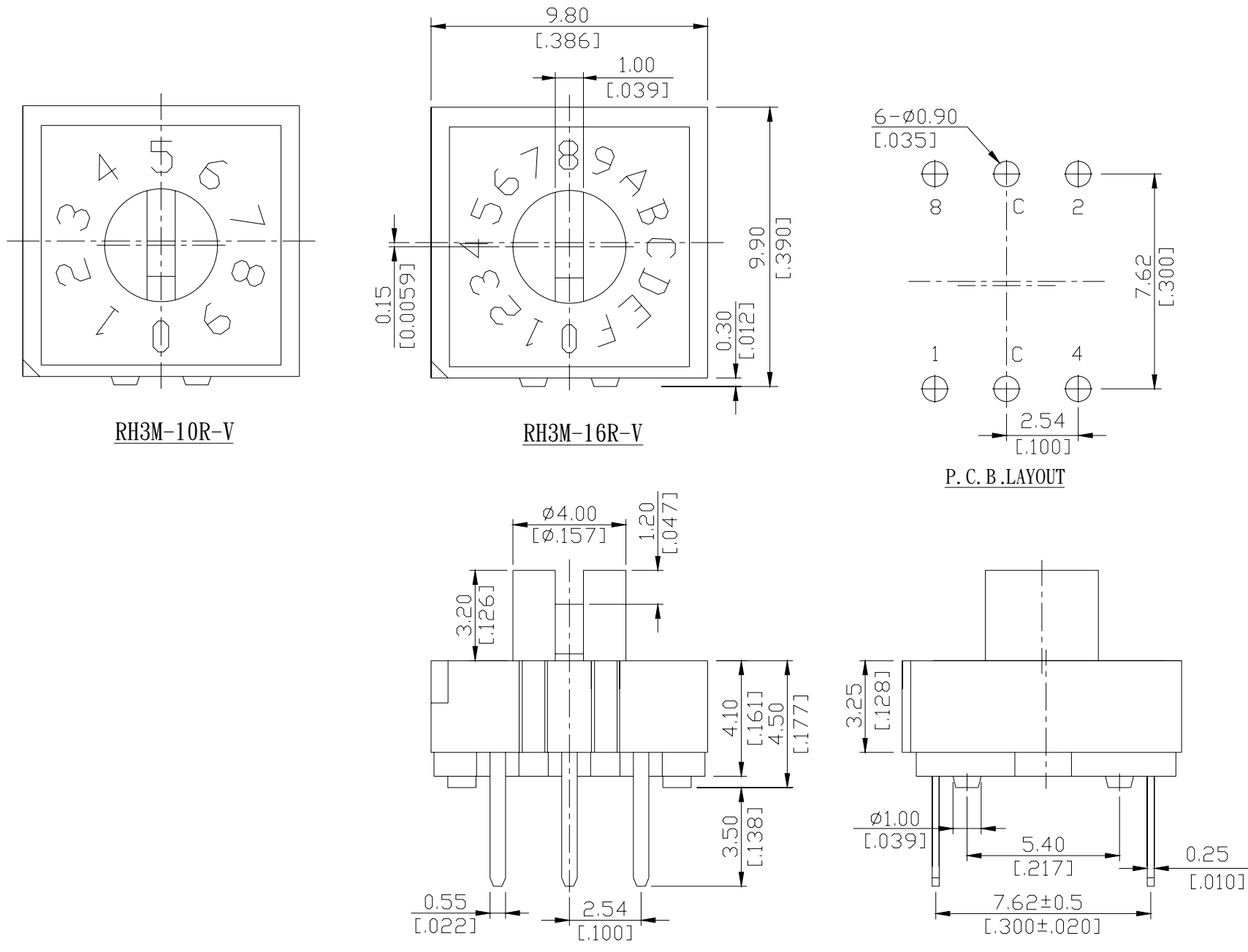
General Tolerance : ±0.2mm

RM3



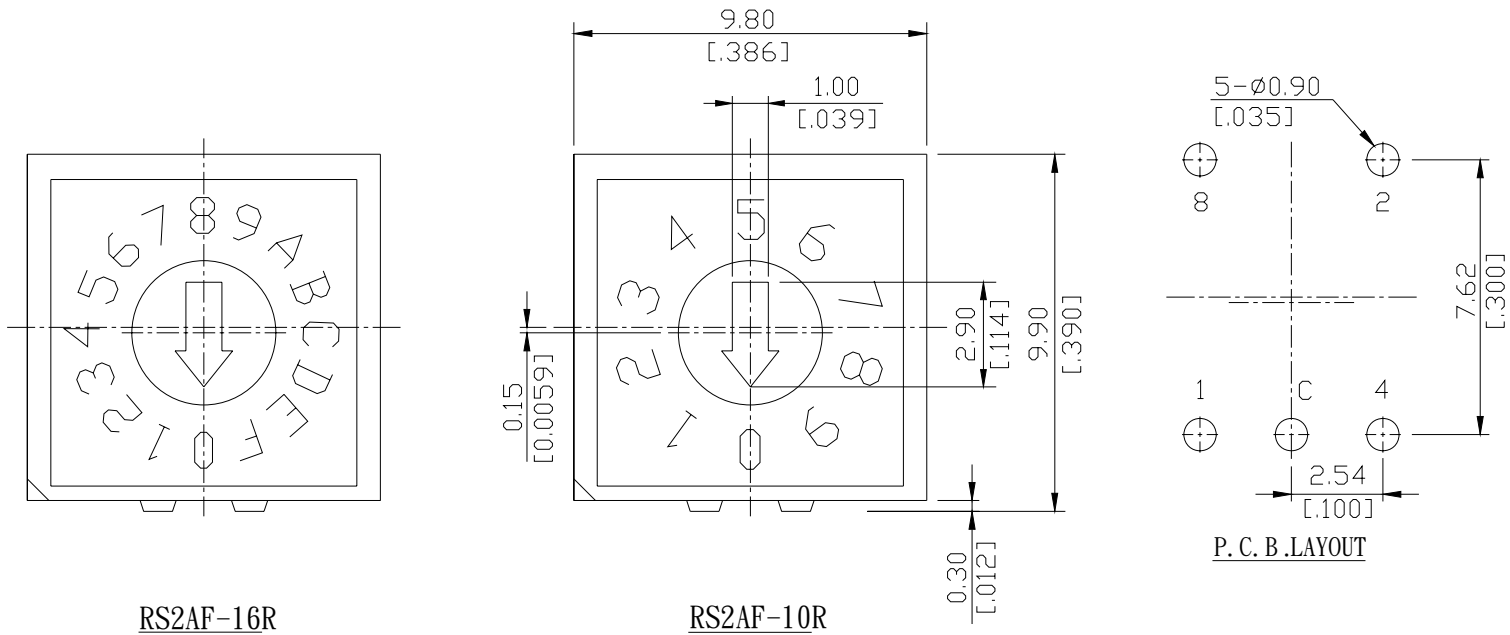
General Tolerance : ±0.2mm

RH3M



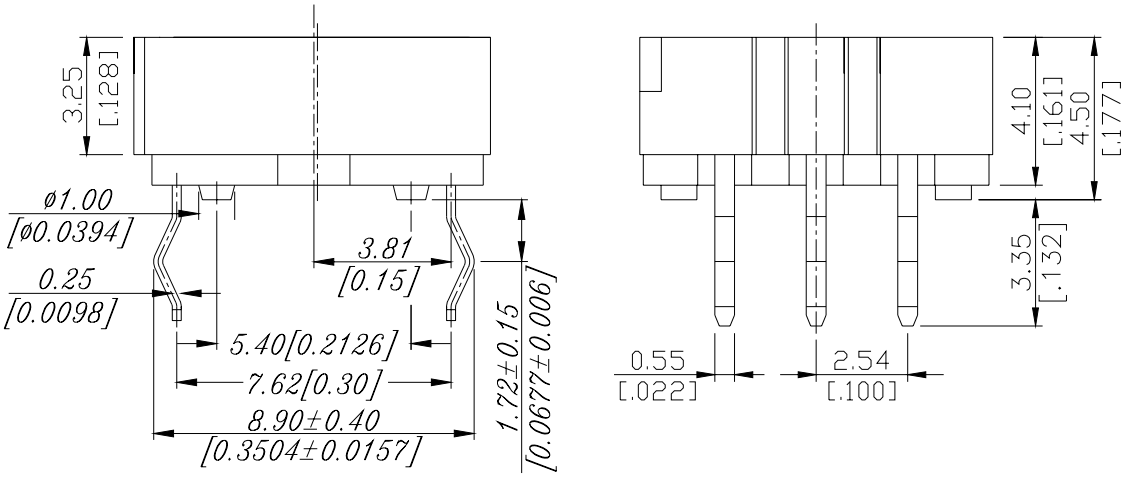
General Tolerance : ±0.2mm

RS2



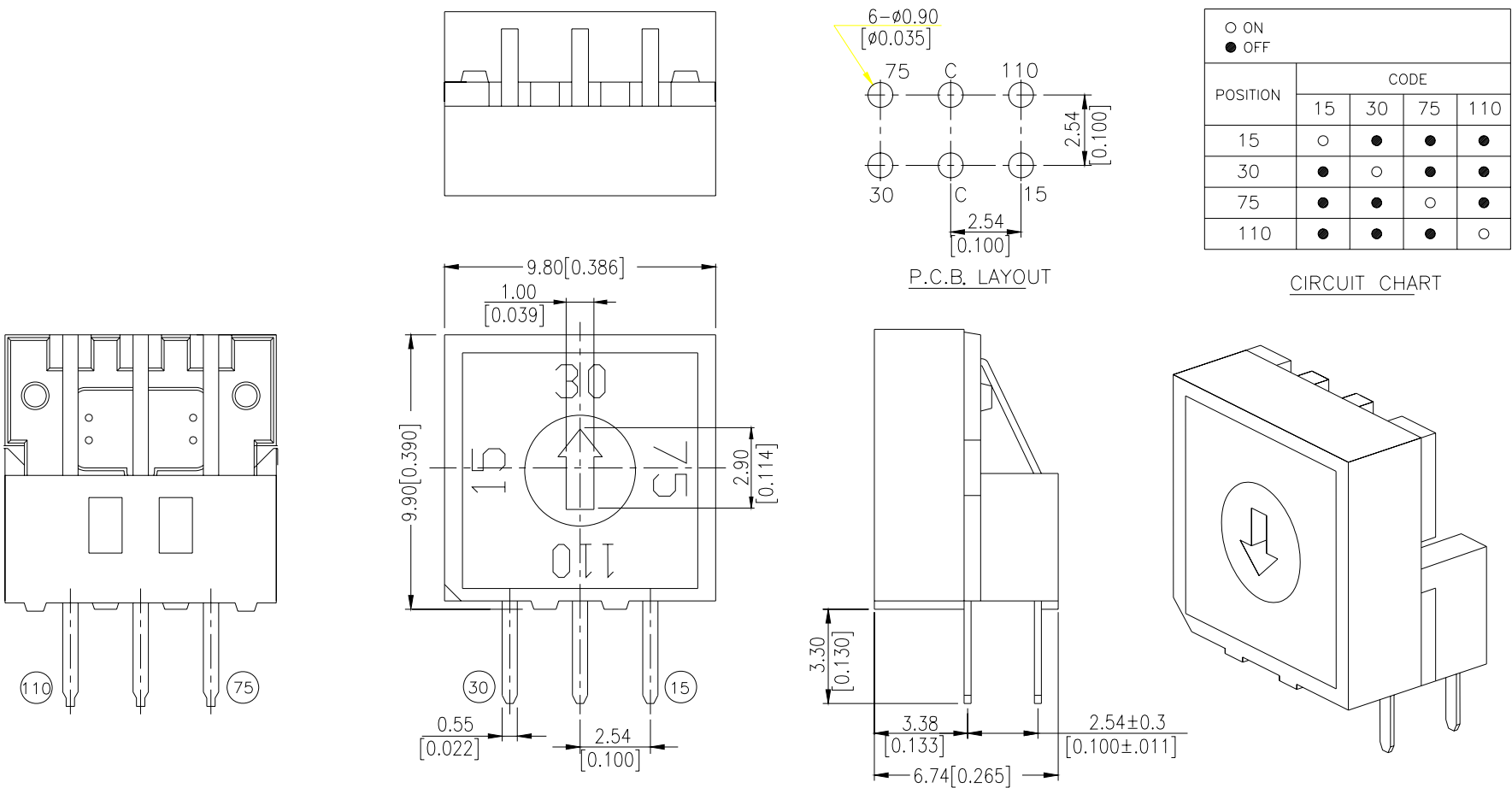
RS2AF-16R

RS2AF-10R



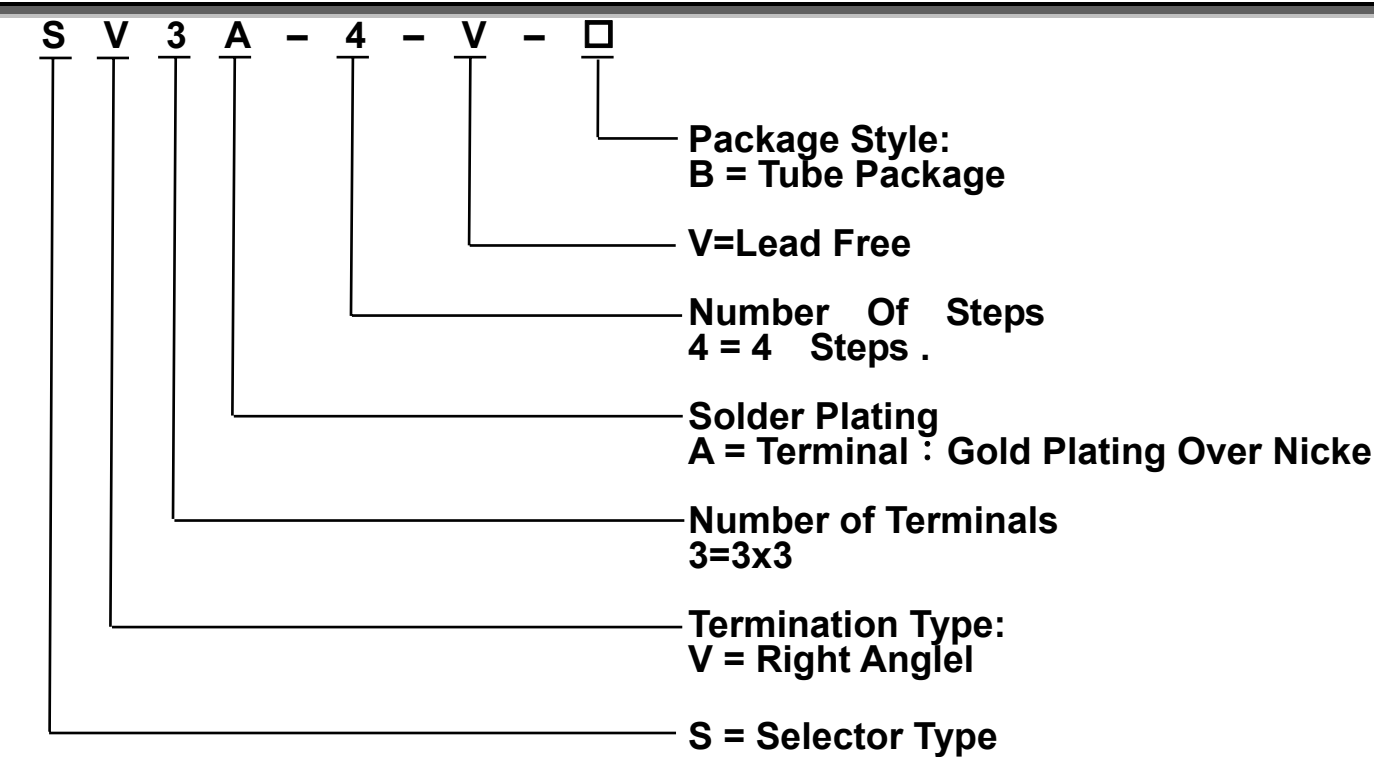
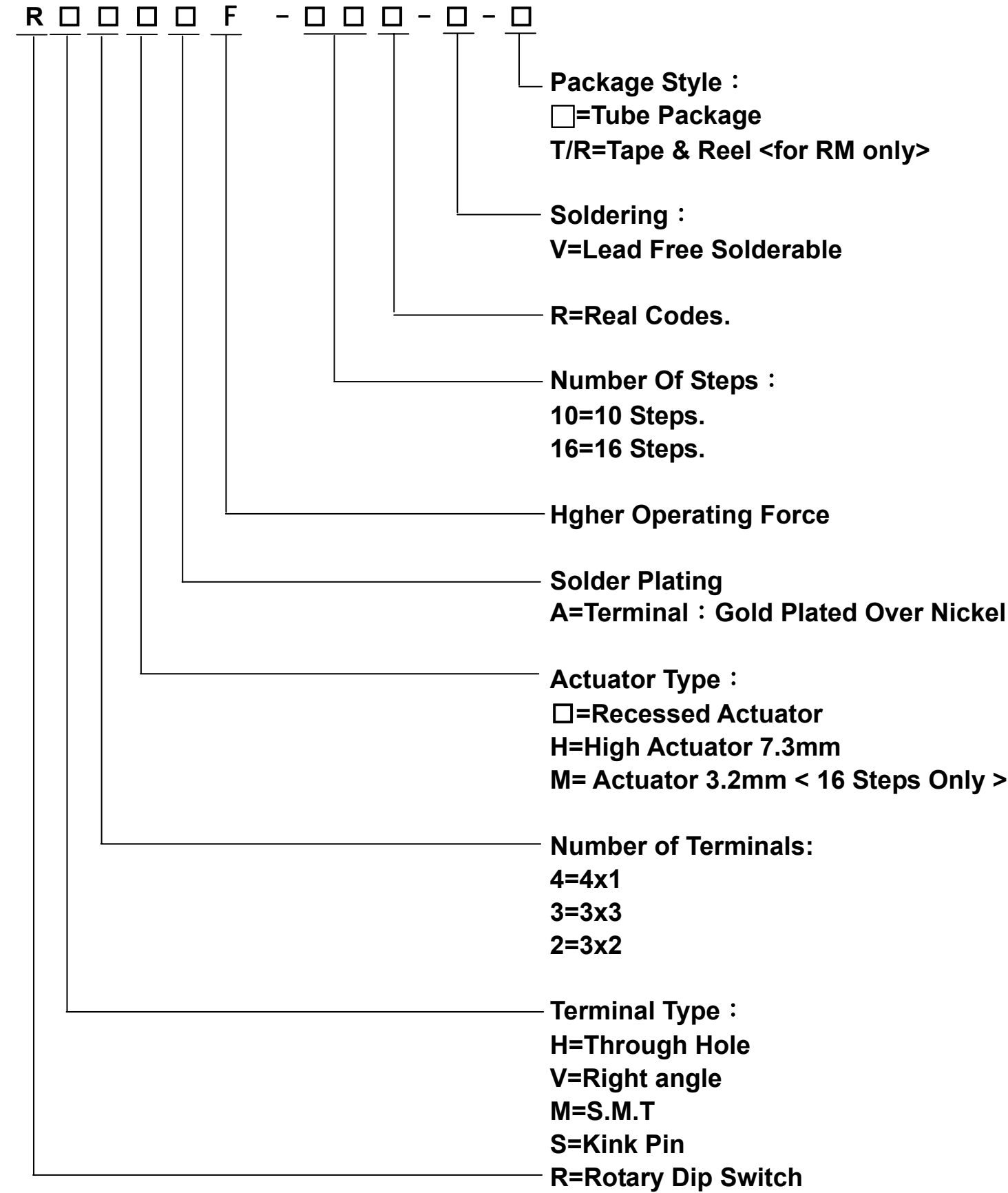
General Tolerance : ±0.2mm

SV3A-4-V



CIRCUIT CHART

HOW TO ORDER



△ MECHANICAL

Mechanical Life: 200mΩ max. 20,000 steps

Operating Force: 200gf Cm max.

△ ENVIRONMENTAL

Operating Temperature: -25°C to +80°C

Storage Temperature: -40°C to +85°C

△ ELECTRICAL

Electrical Life: 200mΩ max. 20,000 steps

Non-Switching Rating: 100mA, 50VDC

Switching Rating: 24VDC, 25mA

Contact Resistance: (a) 100mΩ max. (initial)

(b) 200mΩ (final – after test)

Insulation Resistance: 100MΩ min. at 250VDC

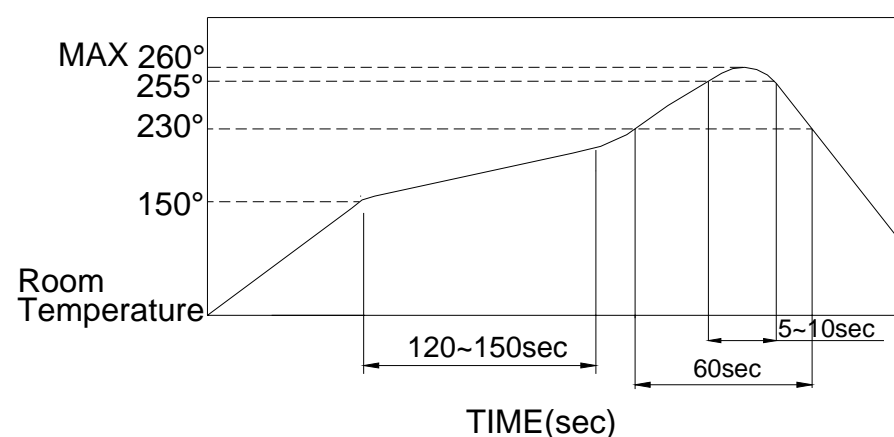
Voltage Proof: 250VAC for 1 minute

SOLDERING PROCESS

△HAND SOLDERING : Use a soldering iron of 30 watts, controlled at (350°C) approximately max 5 seconds.

△WAVE SOLDERING: Recommended temperature at 500°F (260°C) max. 5 seconds. (For through hole type).

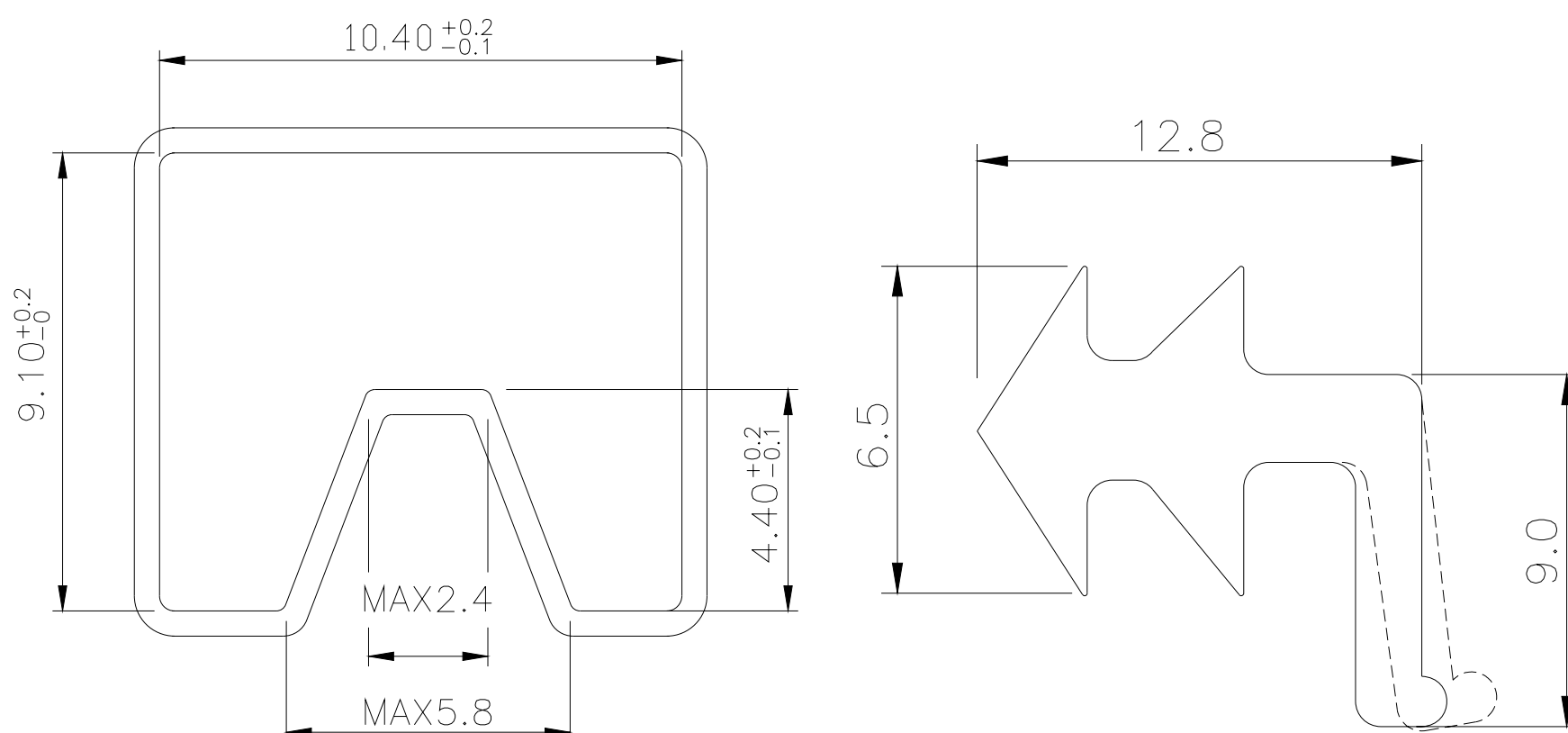
△REFLOW SOLDERING: When applying reflow soldering,
the peak temperature of the reflow oven should be set to 260°C max.



PACKING

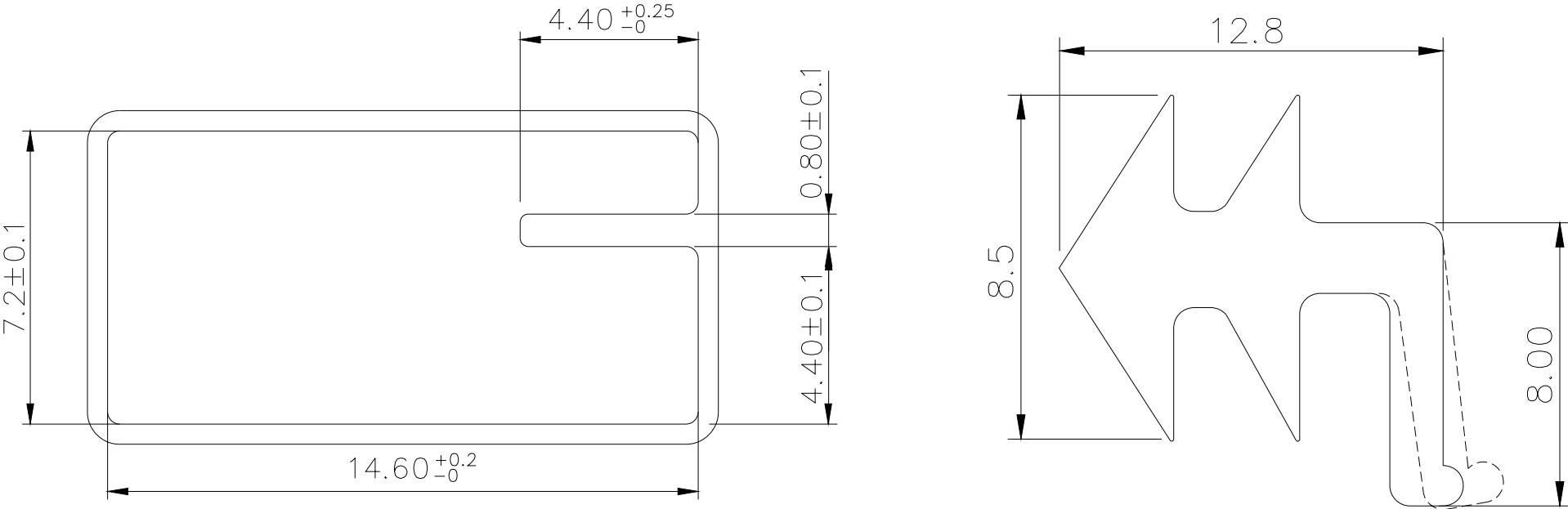
Part Number	Number Per Tube	Number Per Reel
RH(S)-	48	-
RH(S)-H	48	-
RV-	48	-
RV-H	48	-
RM-	48	750
RM-H	48	250

RH TUBE



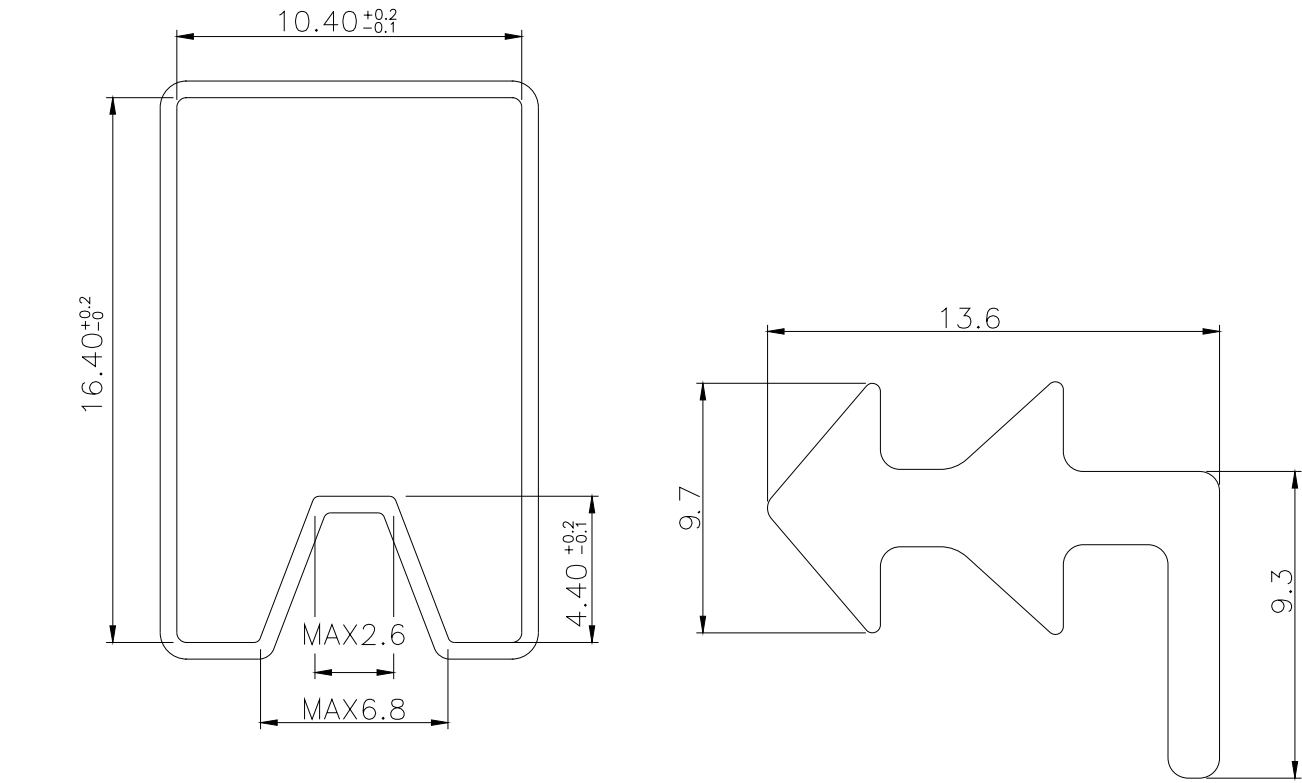
General Tolerance : $\pm 0.2\text{mm}$

RV TUBE



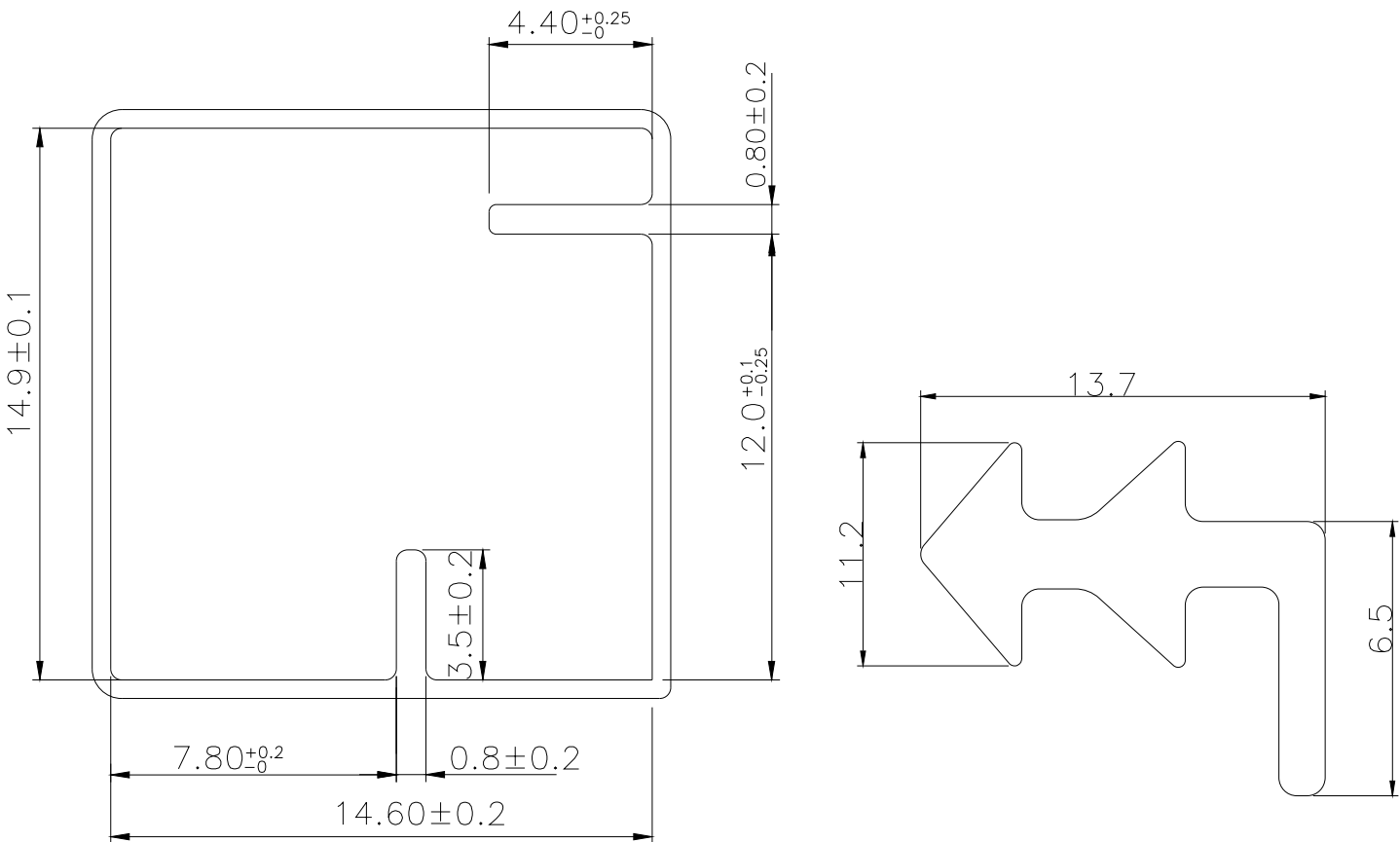
General Tolerance : ± 0.2 mm

RH-H TUBE



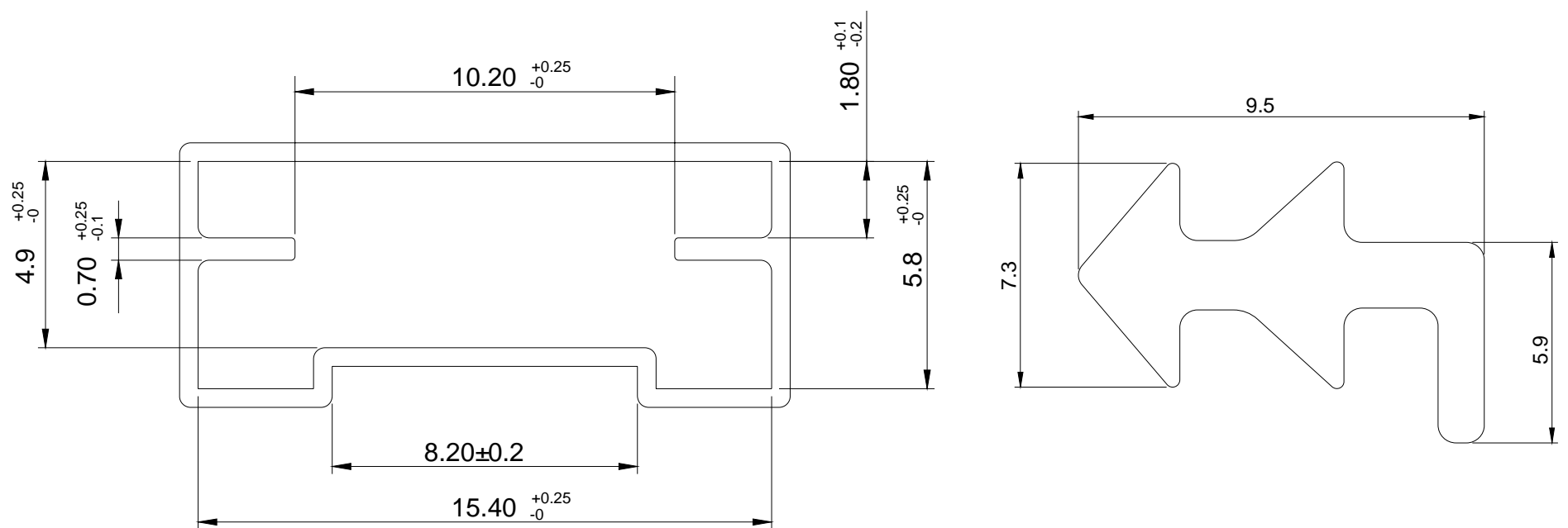
General Tolerance : ± 0.2 mm

RV -H TUBE



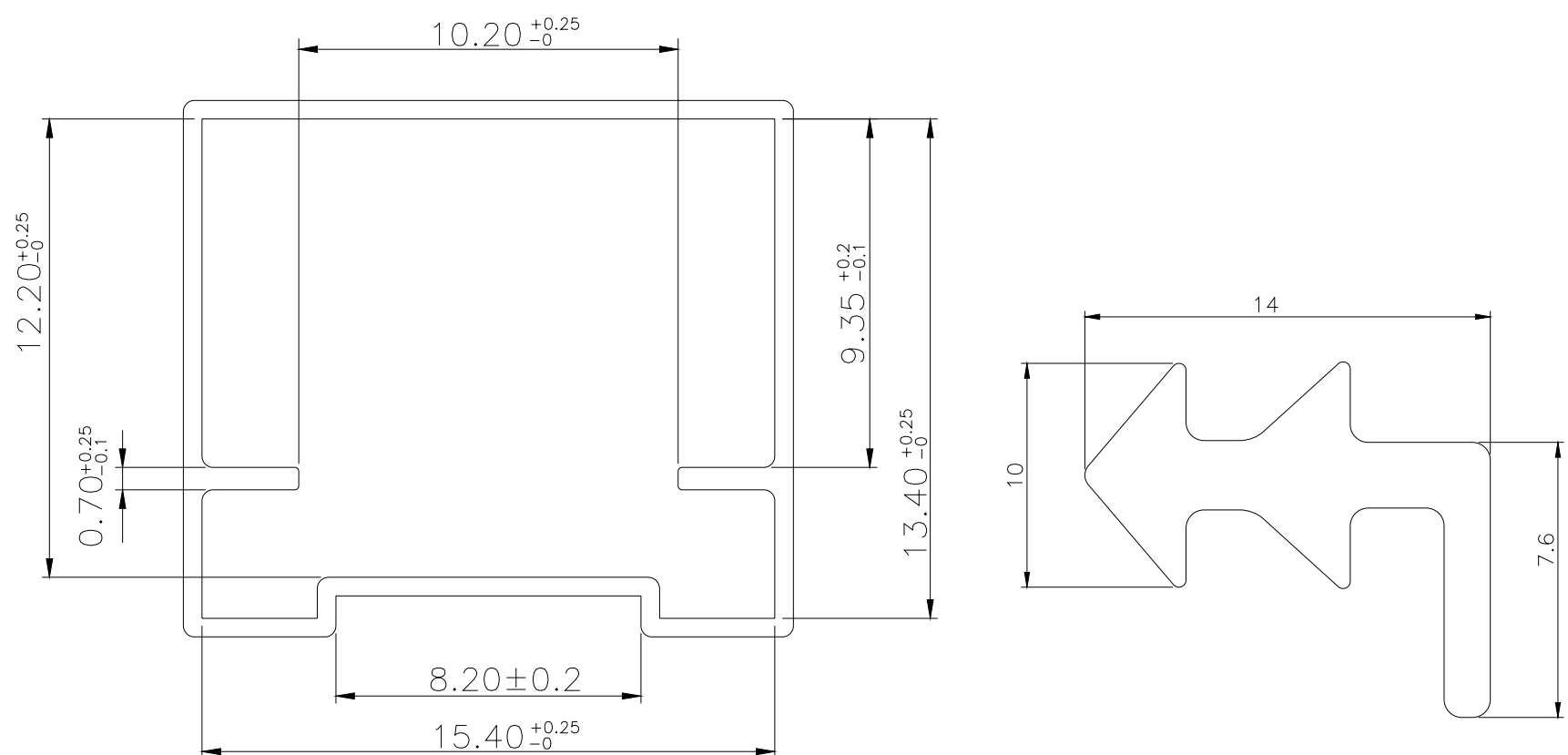
General Tolerance : ± 0.2 mm

RM

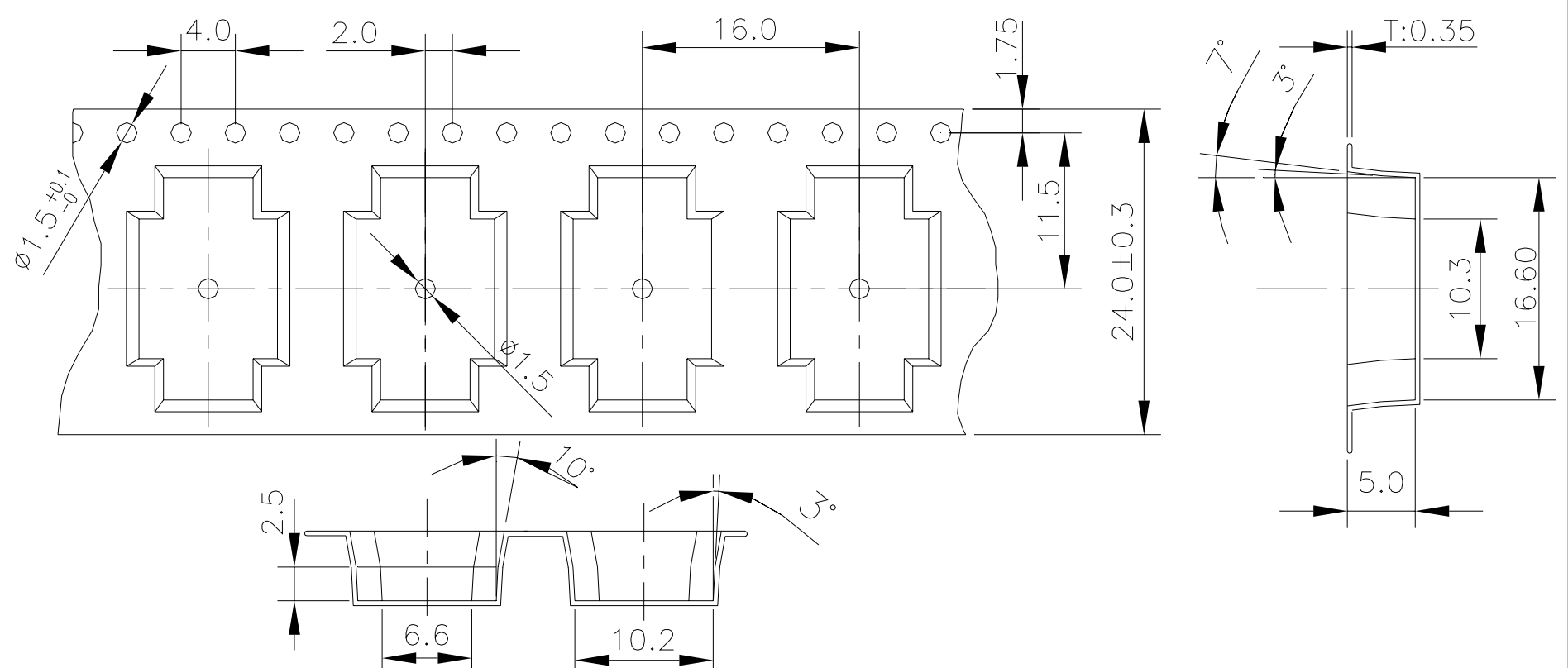


General Tolerance : $\pm 0.2\text{mm}$

RM-H



General Tolerance : $\pm 0.2\text{mm}$

RM3 REEL

General Tolerance : $\pm 0.1\text{mm}$

RM4 REEL

