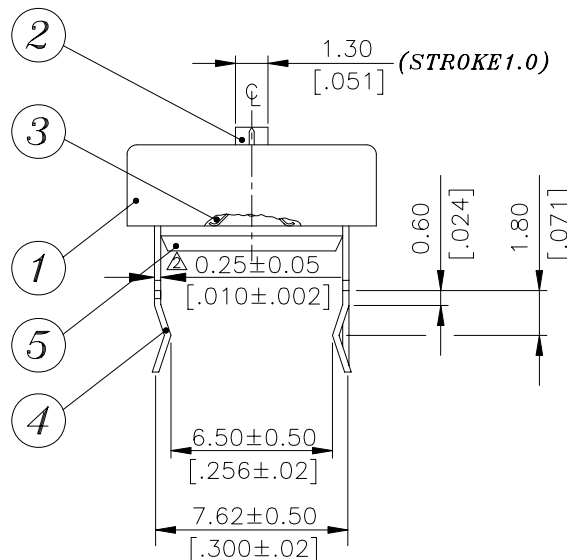
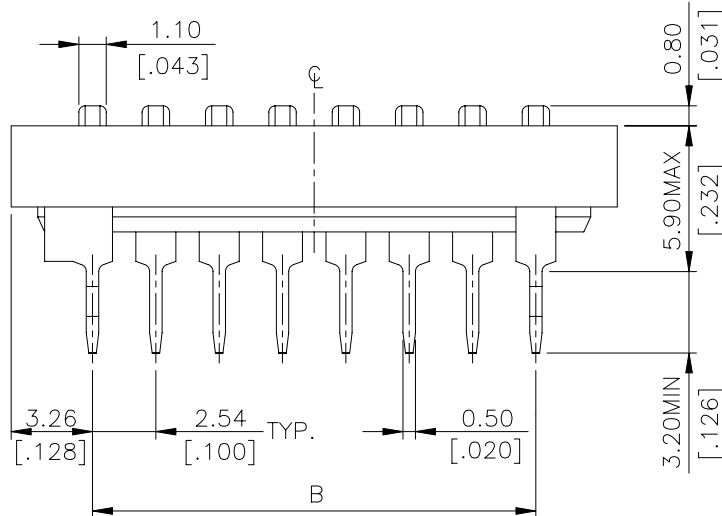
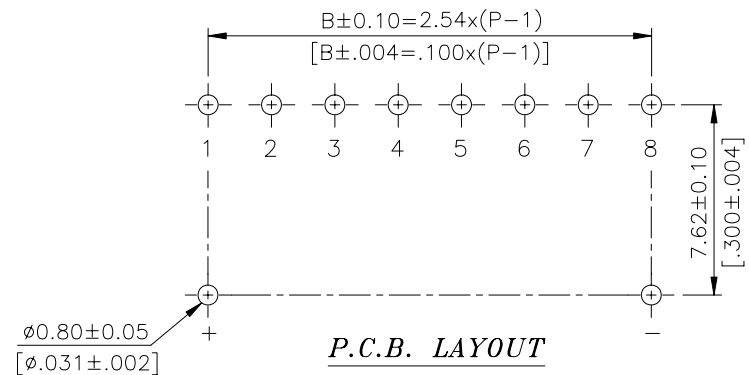
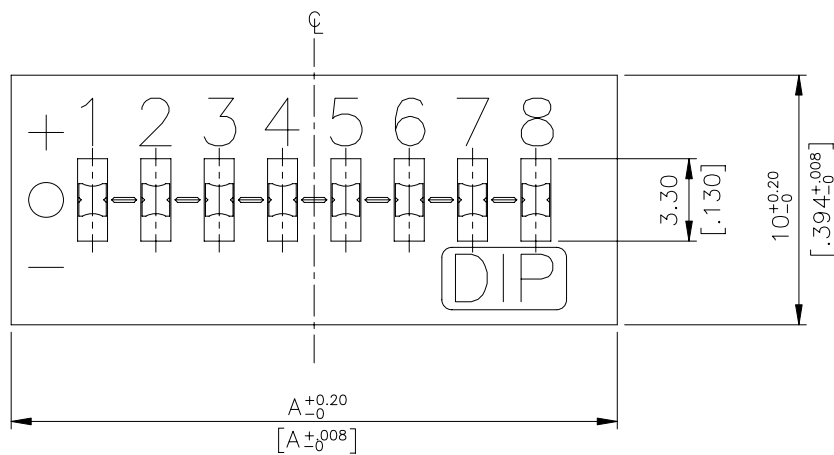


TDS SERIES



DIMENSIONS

TDS



| | | | |
|-----------|-------------|--------------|--------------|
| TDS-12 | 12 | 34.46[1.357] | 27.94[1.100] |
| * TDS-10 | 10 | 29.38[1.157] | 22.86[.900] |
| * TDS-09 | 9 | 26.84[1.057] | 20.32[.800] |
| * TDS-08 | 8 | 24.30[.957] | 17.78[.700] |
| TDS-07 | 7 | 21.76[.857] | 15.24[.600] |
| TDS-06 | 6 | 19.22[.757] | 12.70[.500] |
| TDS-05 | 5 | 16.68[.657] | 10.16[.400] |
| * TDS-04 | 4 | 14.14[.557] | 7.62[.300] |
| TDS-03 | 3 | 11.60[.457] | 5.08[.200] |
| TDS-02 | 2 | 9.06[.357] | 2.54[.100] |
| PROD. NO. | NO. OF POS. | DIM. A | DIM. B |

**General Tolerance : $\pm 0.2\text{mm}$

HOW TO ORDER

TDS - ☐ ☐ - ☐ - ☐

Package Style :
☐ = Tube

Soldering :
V = Lead Free Solderable

Number Of Positions:
04 = 4 Positions
08 = 8 Positions
09 = 9 Positions
10 = 10 Positions

Tri-State Type Dip Switch

SPECIFICATION

△MECHANICAL

Mechanical Life: 2,000 operations cycles
Operation Force: 1,000gf max.
Stroke: 1.0mm
Operation Temp: -20℃ to +70℃
Storage Temp: -40℃ to +85℃

△ELECTRICAL

Electrical Life: 2,000 cycles
Non-Switching Rating: 100mA, 50VDC
Switching Rating: 25mA, 24VDC
Contact Resistance: (a) 50mΩ max. at initial
(b)100mΩmax. after life test
Insulation Resistance: 100MΩ min. at 500VDC
Dielectric Strength: 500VAC/1 minute
Circuit: 3 switching positions

MATERIAL

△BASE & COVER: UL940V-0 PBT High Thermoplastic
Color: Black
△ACTUATORS: UL94V-0 Nylon Thermoplastic
Color: White
△CONTACT: Alloy Copper with gold plated
△TERMINAL: Brass with tin plated
△CONTACT PLATING: Gold plating over nickel

SOLDERING PROCESS

△Keep all switch contacts in their "O" position for all operations.

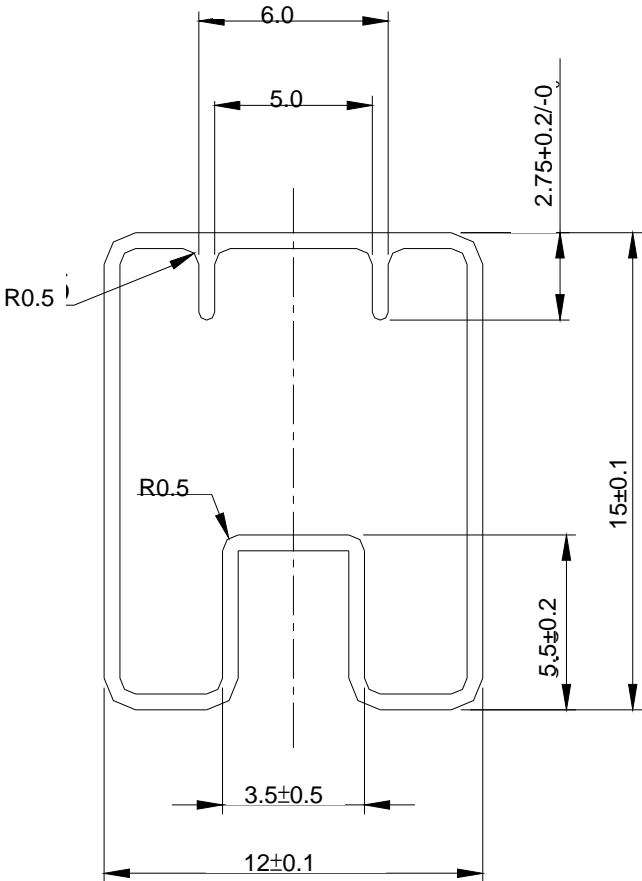
△WAVE SOLDERING: Recommended solder temperature at 500°F (260℃) max. 5seconds.

△HAND SOLDERING: Use a soldering iron of 30 watts, controlled at 350℃ approximately 5 seconds while Applying solder.

PACKING

| | PART NUMBER | NO.POS | QUANTITY PER TUBE |
|--|-------------|--------|-------------------|
| | TDS-04 | 04 | 33 |
| | TDS-08 | 08 | 19 |
| | TDS-09 | 09 | 17 |
| | TDS-10 | 10 | 16 |

TUBE



**General Tolerance : ±0.2mm