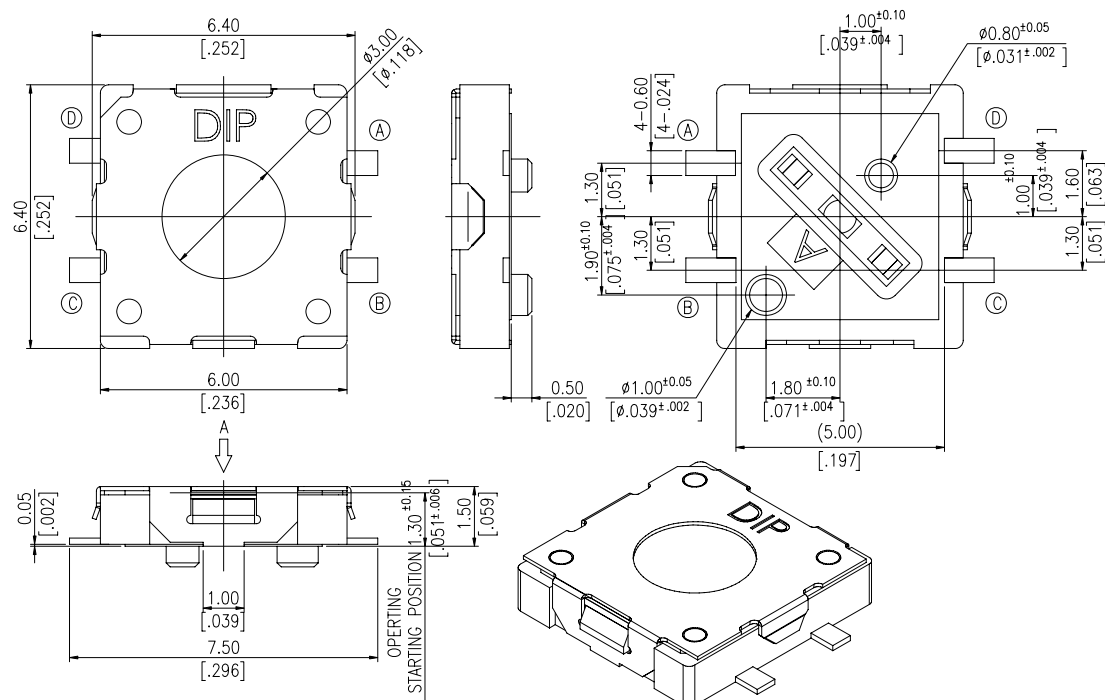


2A SERIES

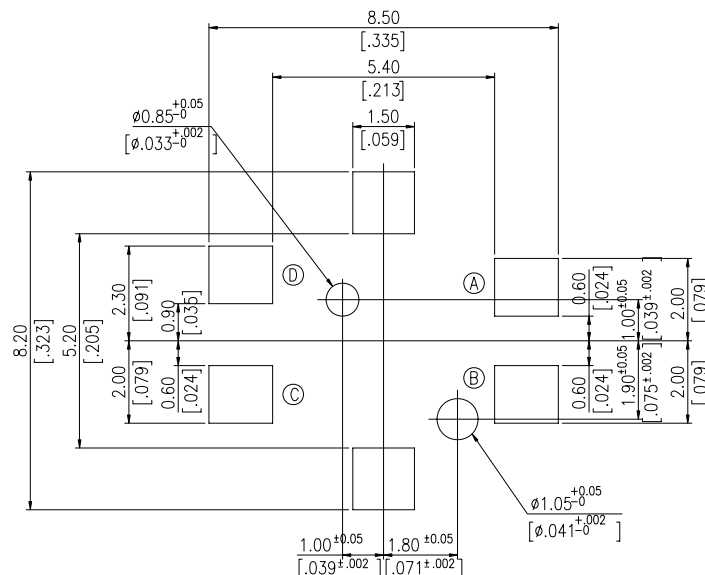


DIMENSIONS

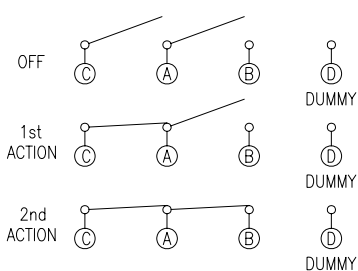
2A-F



P.C.B LAYOUT (VIEW FROM THE DIRECTION A)

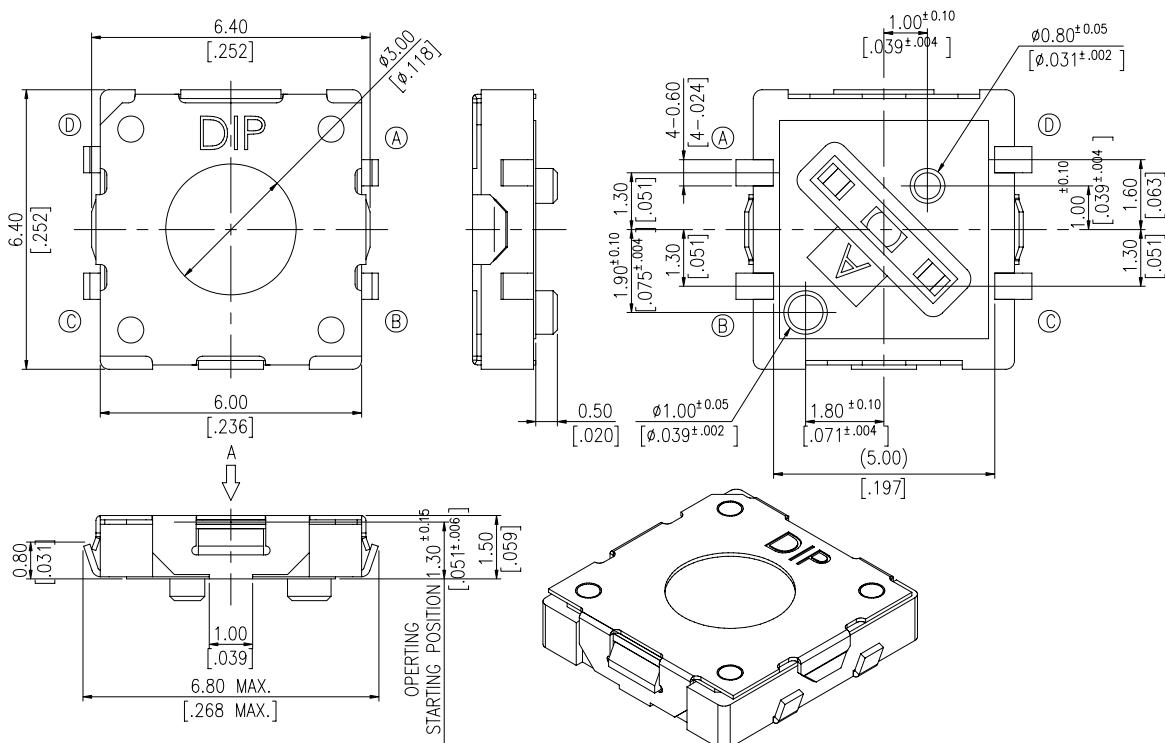


CIRCUIT

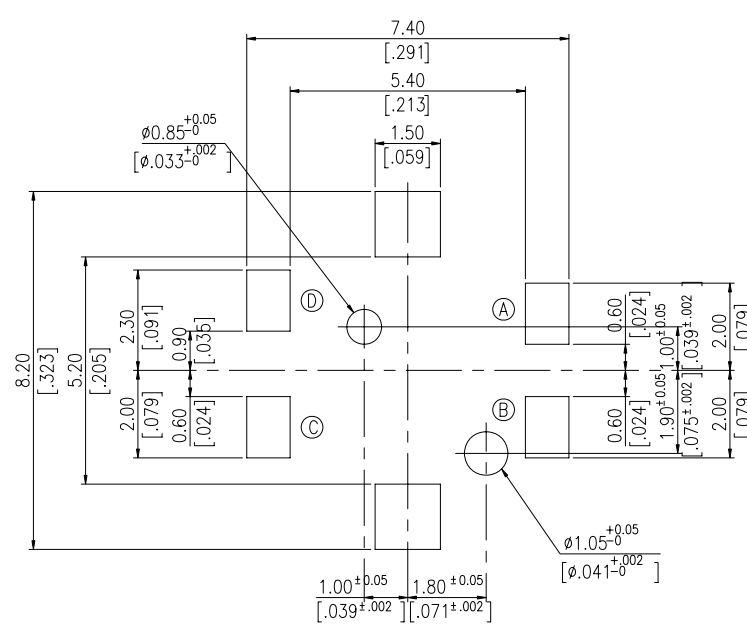


****GENERAL TOLERANCES MAX:±0.2mm.****

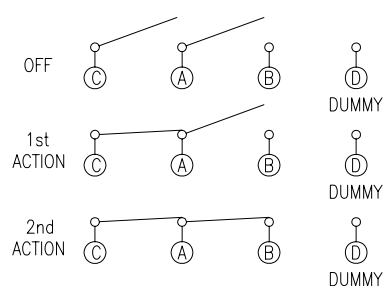
2A-L



P.C.B LAYOUT (VIEW FROM THE DIRECTION A)

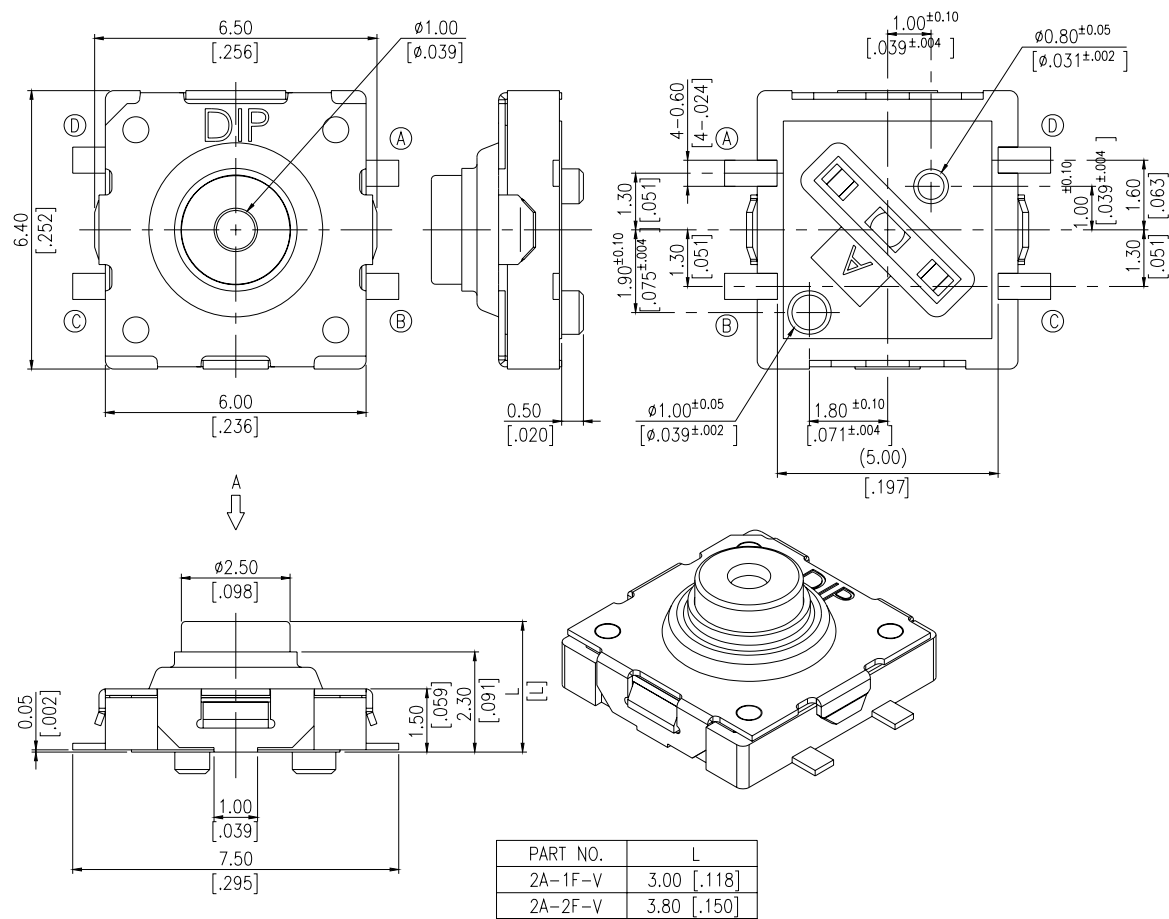


CIRCUIT

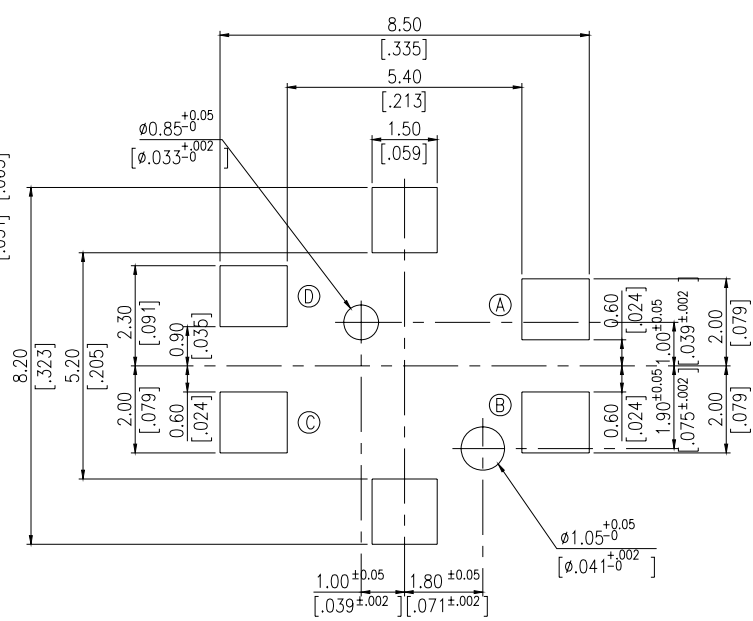


****GENERAL TOLERANCES MAX:±0.2mm.****

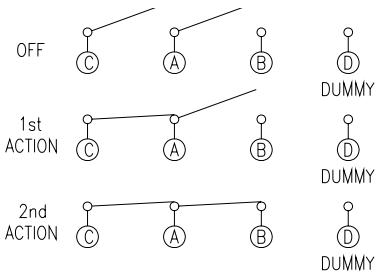
2A-□F



P.C.B LAYOUT
(VIEW FROM THE DIRECTION A)

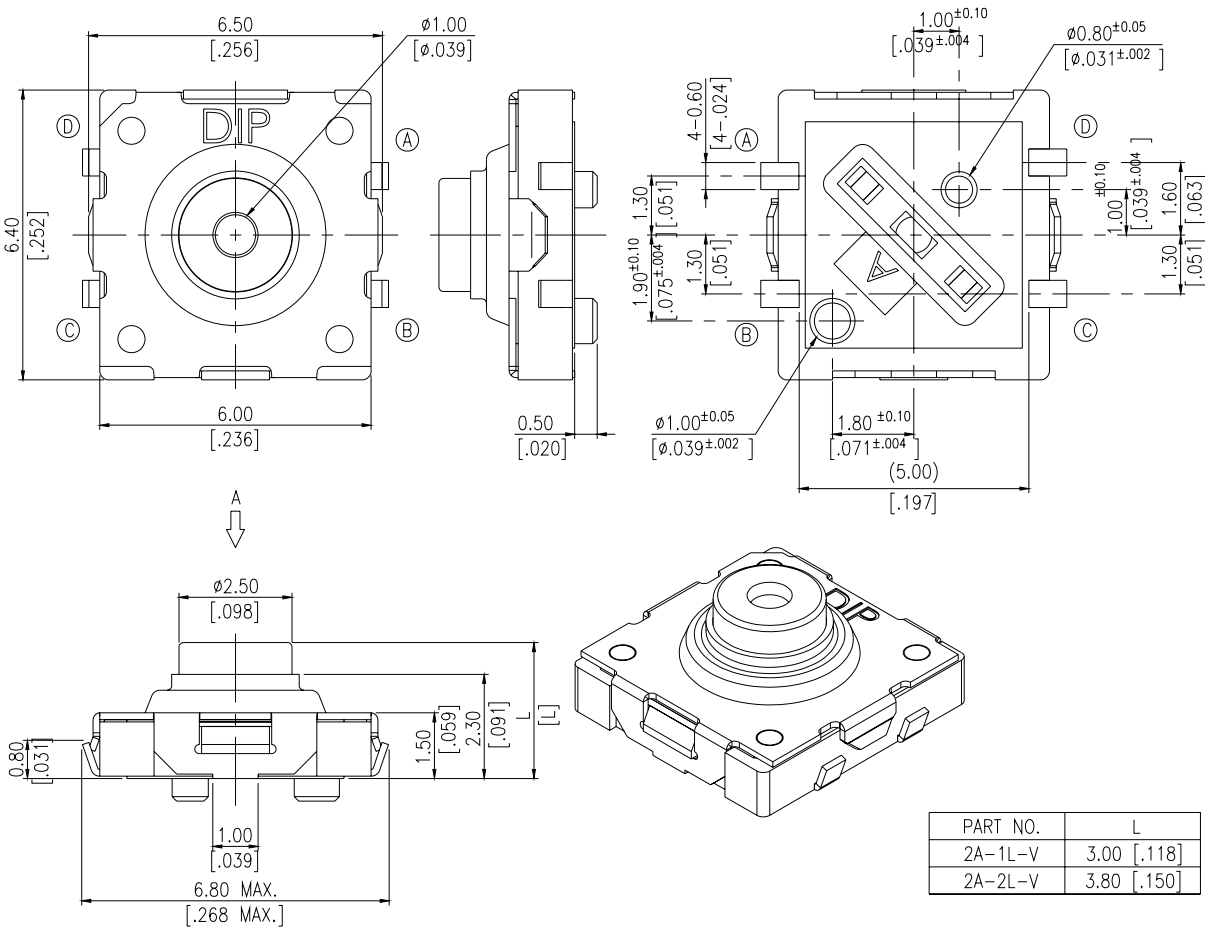


CIRCUIT

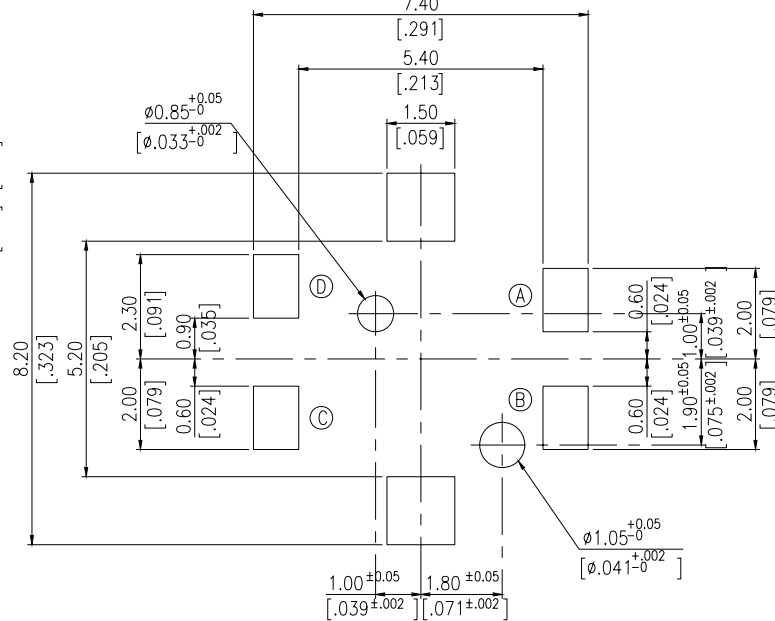


GENERAL TOLERANCES MAX:±0.2mm.

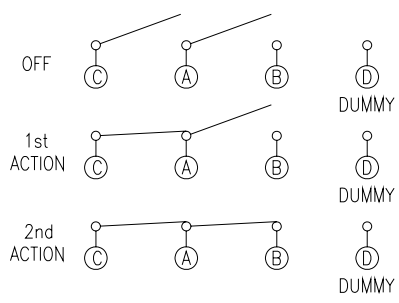
2A-□L



P.C.B LAYOUT
(VIEW FROM THE DIRECTION A)

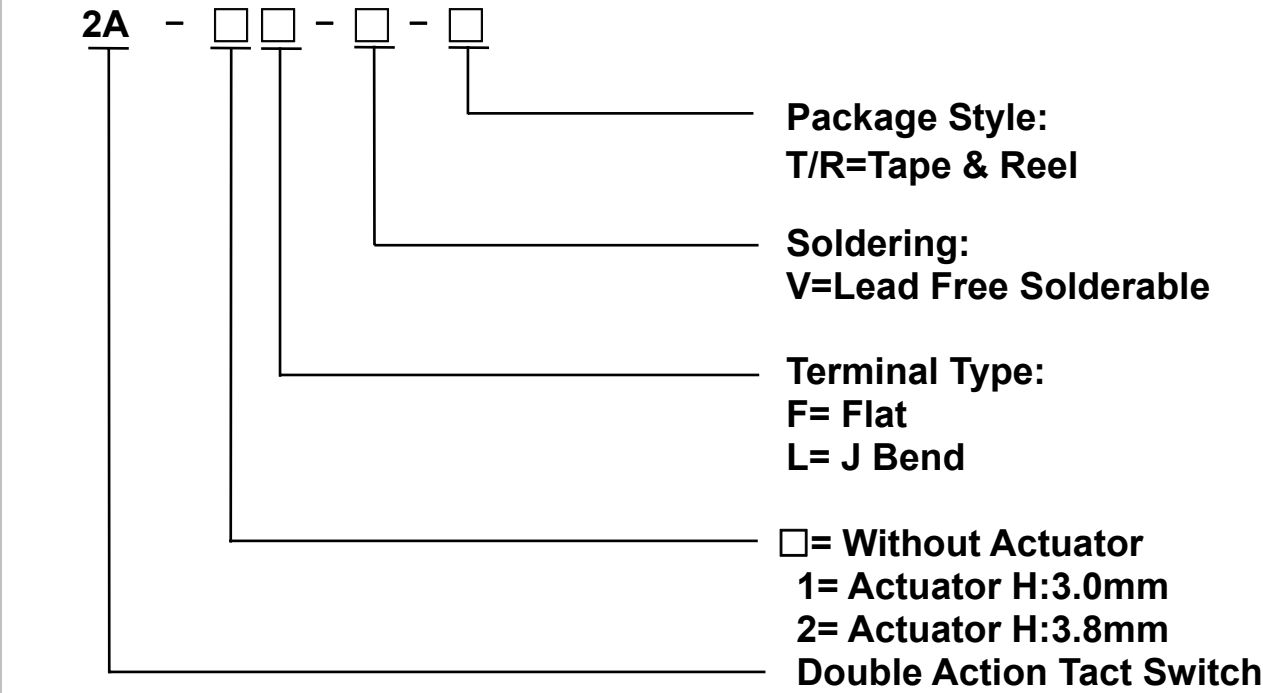


CIRCUIT



GENERAL TOLERANCES MAX:±0.2mm.

HOW TO ORDER

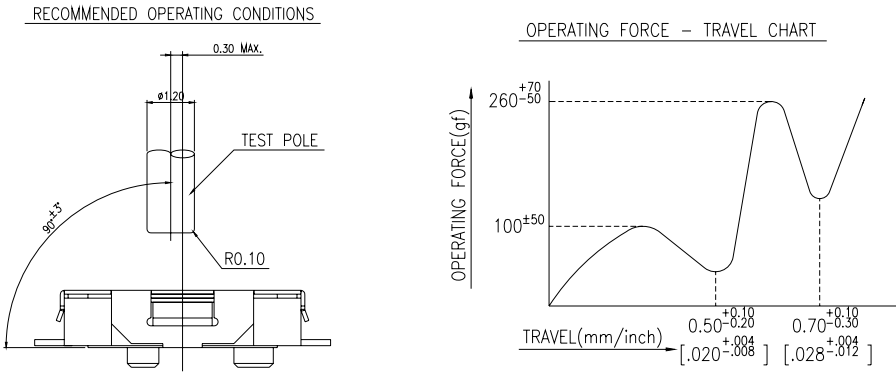


SPECIFICATION

△MECHANICAL
Operation Force: 1st 100 ±50gf
2nd 260 +70gf / -50gf
Stroke: 1st 0.50 +0.10 / -0.20 mm
2nd 0.70 +0.10 / -0.30 mm
Operation Temperature: -25℃ to + 70℃
Storage Temperature: -30℃ to +80℃
△ELECTRICAL
Electrical Life: 30,000 cycles
Rating: 50mA , 12VDC
Contact Resistance: 100mΩ max.
Insulation Resistance: 100MΩ min. at 100VDC
Dielectric Strength: 250VAC/1 minute
Contact Arrangement: 1 pole 2 throw

MATERIAL

△COVER: Nickel silver
△BASE: UL 94V-0 Nylon high-temp Thermoplastic
Color: Black
△DUSTCOVER: PTFE
Color: White
△CONTACT DISC: Stainless with silver cladding
△TERMINAL: Copper alloy with silver plated
△SETM: UL 94V-0 Nylon high-temp Thermoplastic
Color: Black

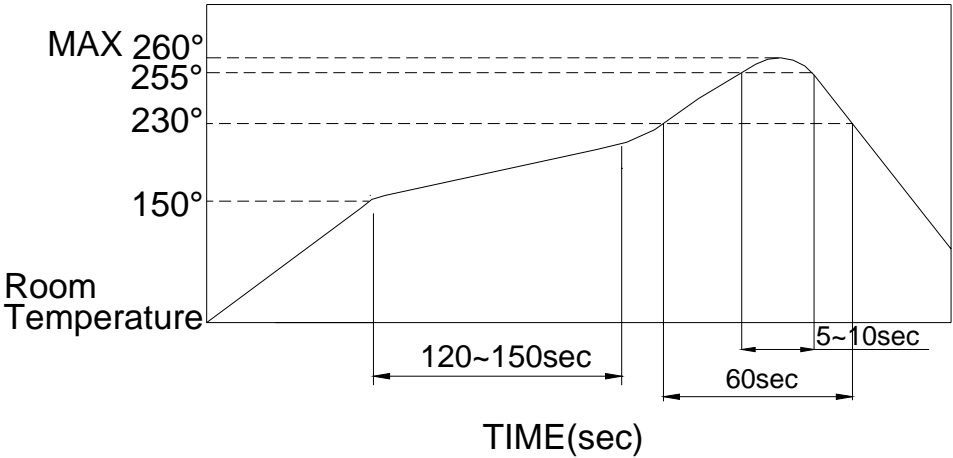


SOLDERING PROCESS

△HAND SOLDERING: Use a soldering iron of 30 watts, controlled at 350℃ approximately max 5 seconds.

△REFLOW SOLDERING: When applying reflow soldering, the peak temperature or the reflow oven should be set at 260℃ max.

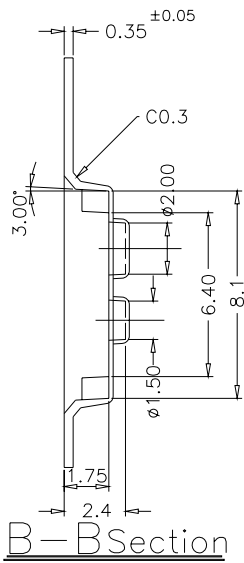
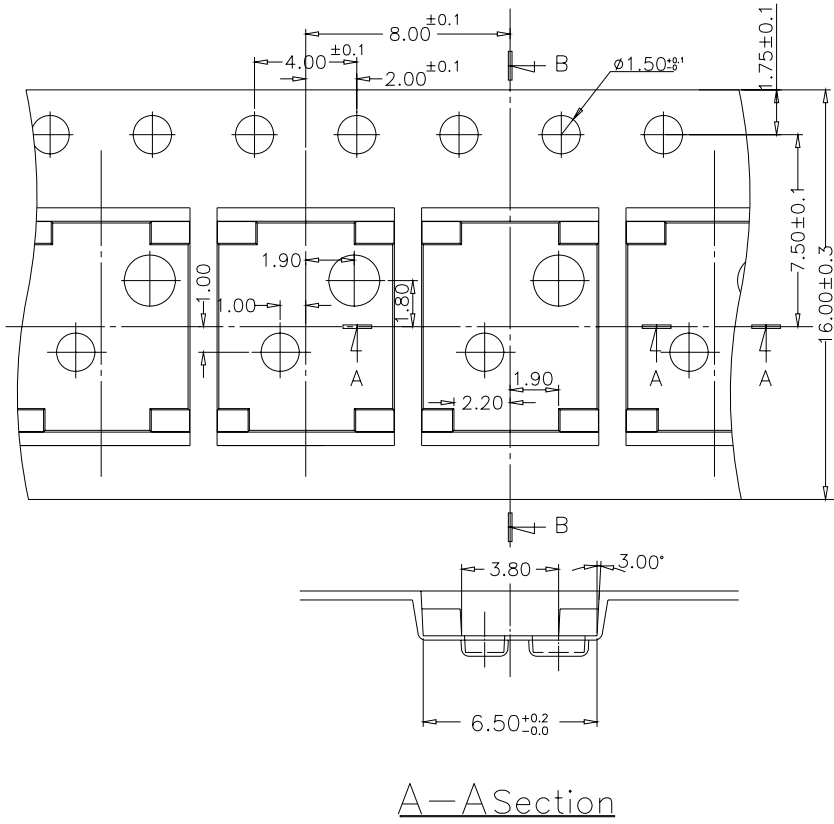
△Reflow Temperature Profile:



PACKING

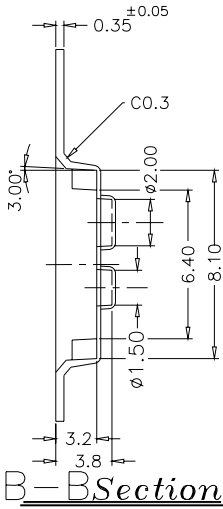
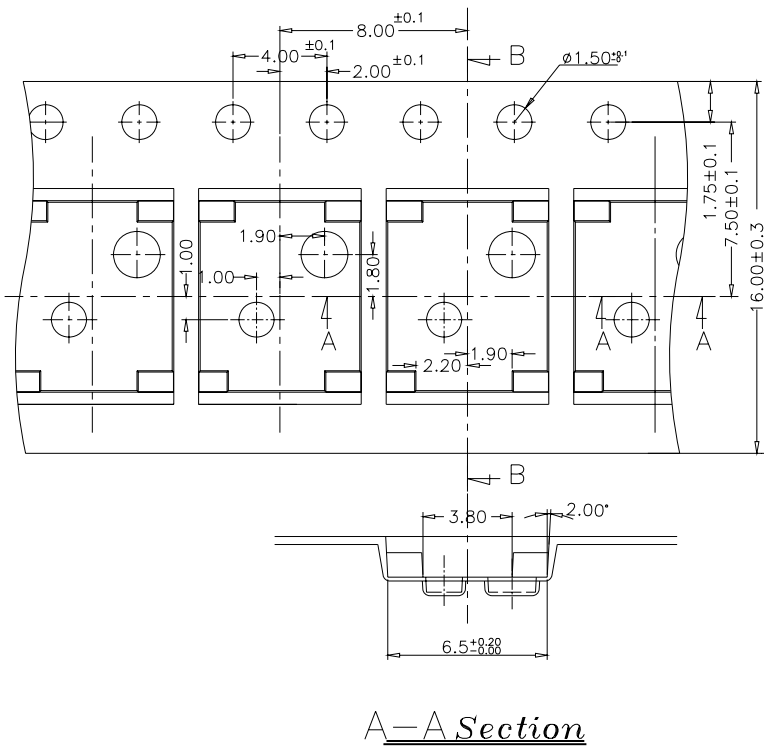
Part Number	Number Per Tube	Number Per Reel
2A-F(L)	-	3000
2A-□F(L)	-	2000

2A-F(L) REEL



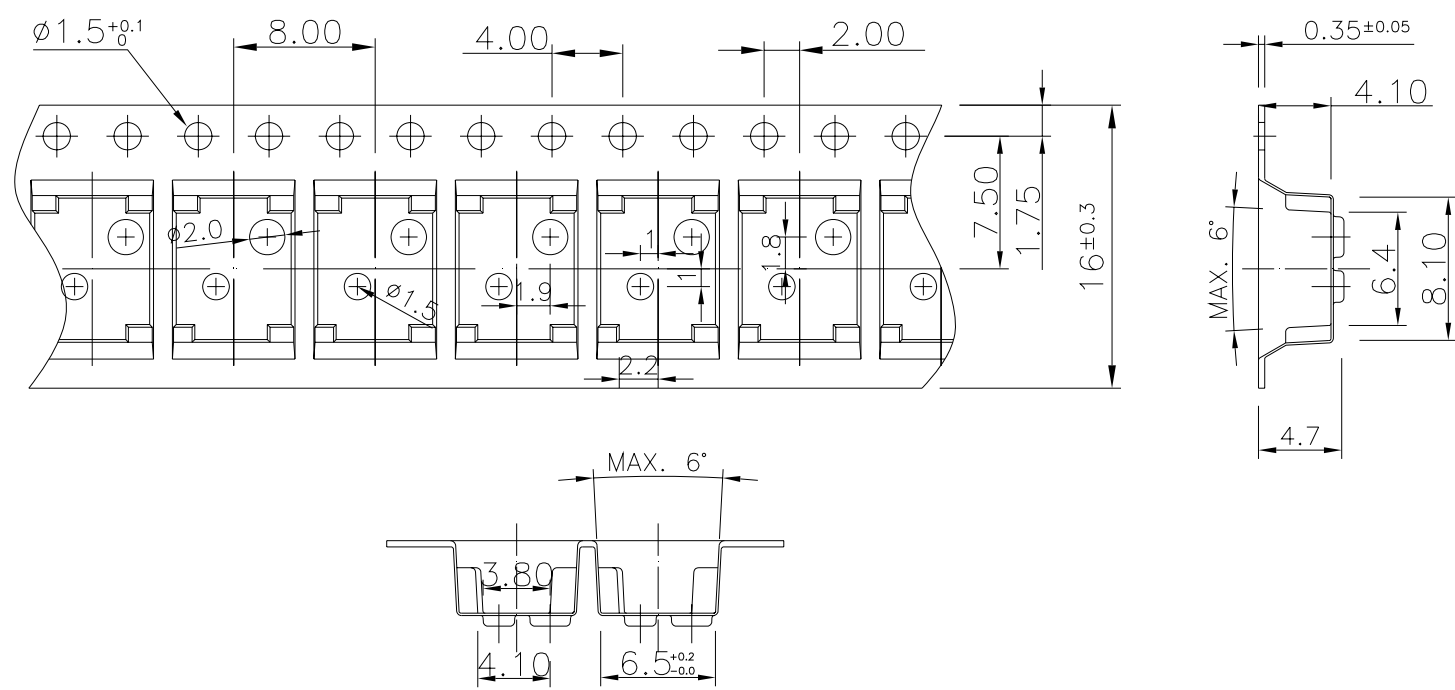
GENERAL TOLERANCES MAX:±0.1mm.

2A-1F(L) REEL



GENERAL TOLERANCES MAX:±0.1mm.

2A-2F(L) REEL



****GENERAL TOLERANCES MAX:±0.1mm.****