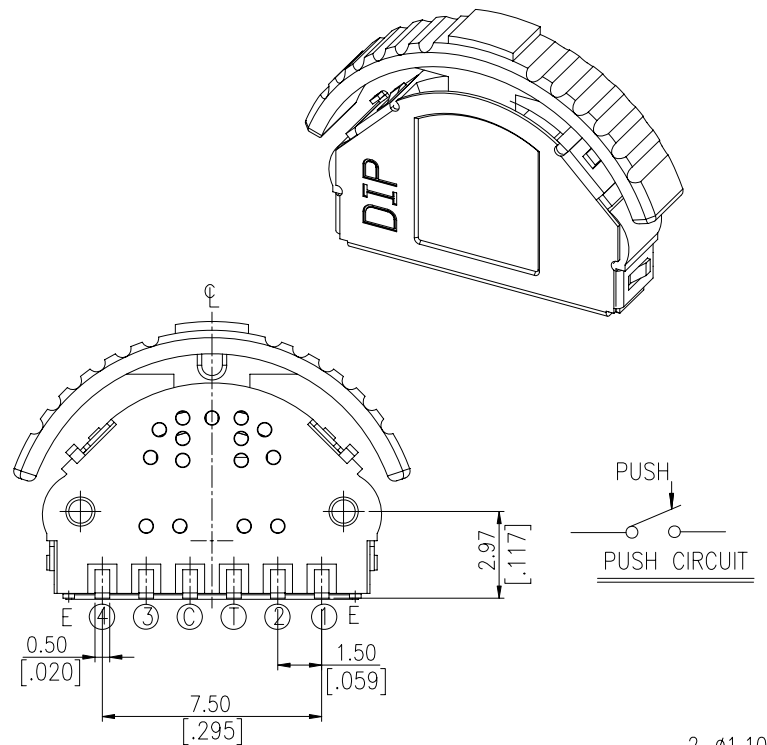
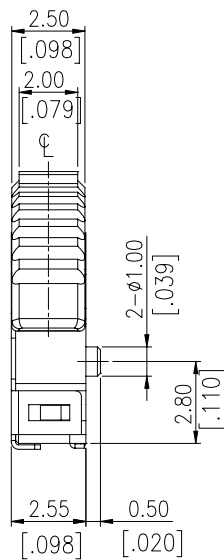
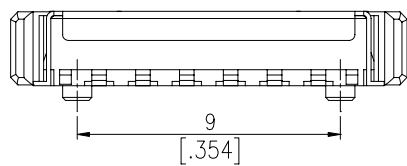
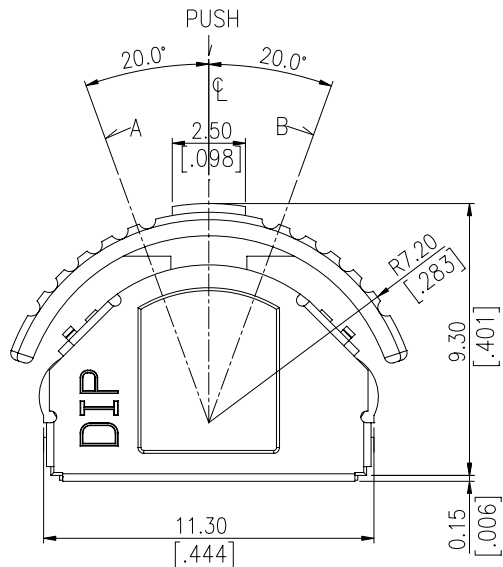
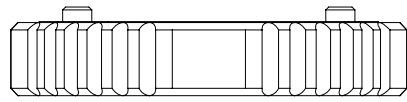


PUSH & LEVER SERIES

DIMENSIONS

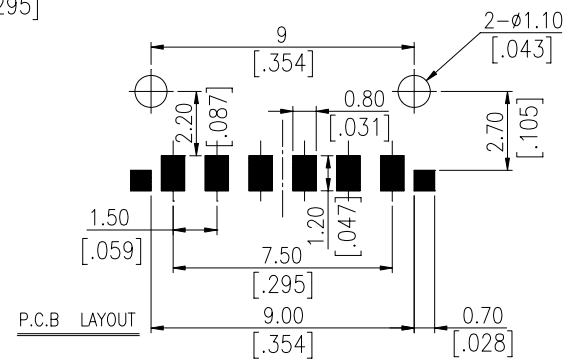
PLJ



ANGLE	A				B			
	20°	(16°)	(8°)	(8°)	(16°)	20°		
①								
②								
③								
④								
Ⓢ								

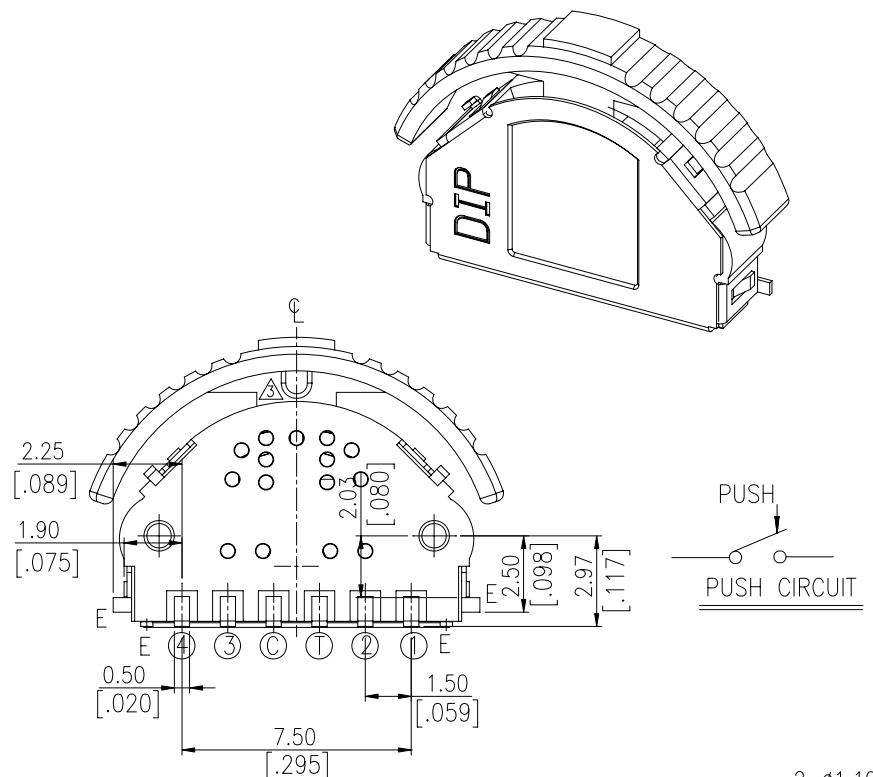
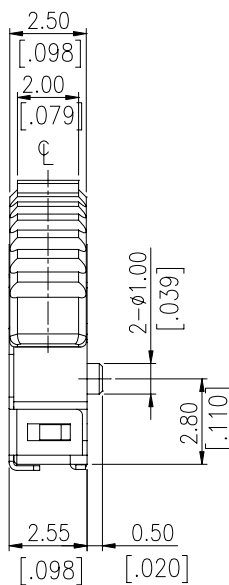
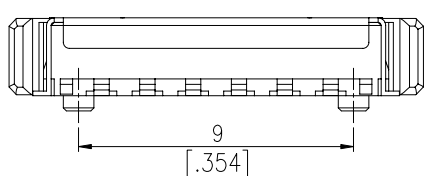
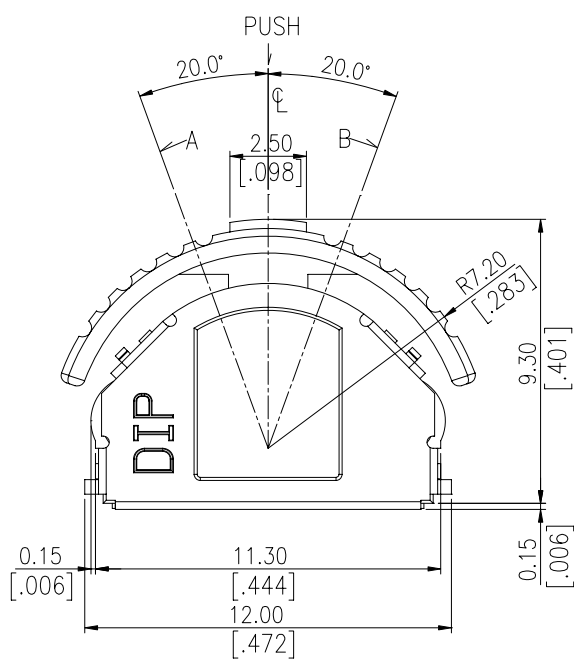
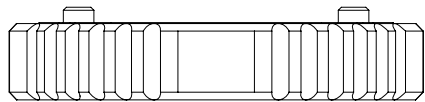
* E : ERTHING TERMINAL
* ■ : ON POSITION

CIRCUIT DIAGRAM



General Tolerance : ±0.20mm

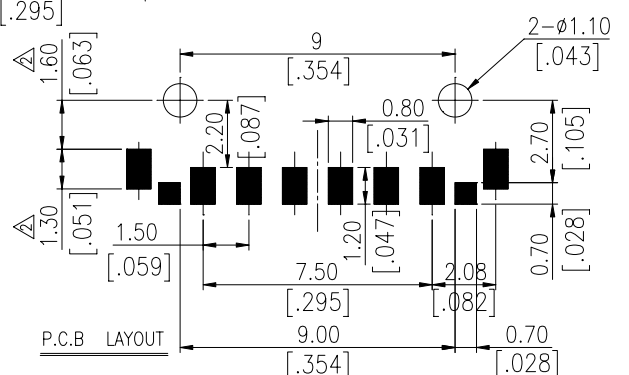
PLJG



ANGLE	A				B			
	20°	(16°)	(8°)	(8°)	(16°)	20°		
①								
②								
③								
④								
Ⓢ								

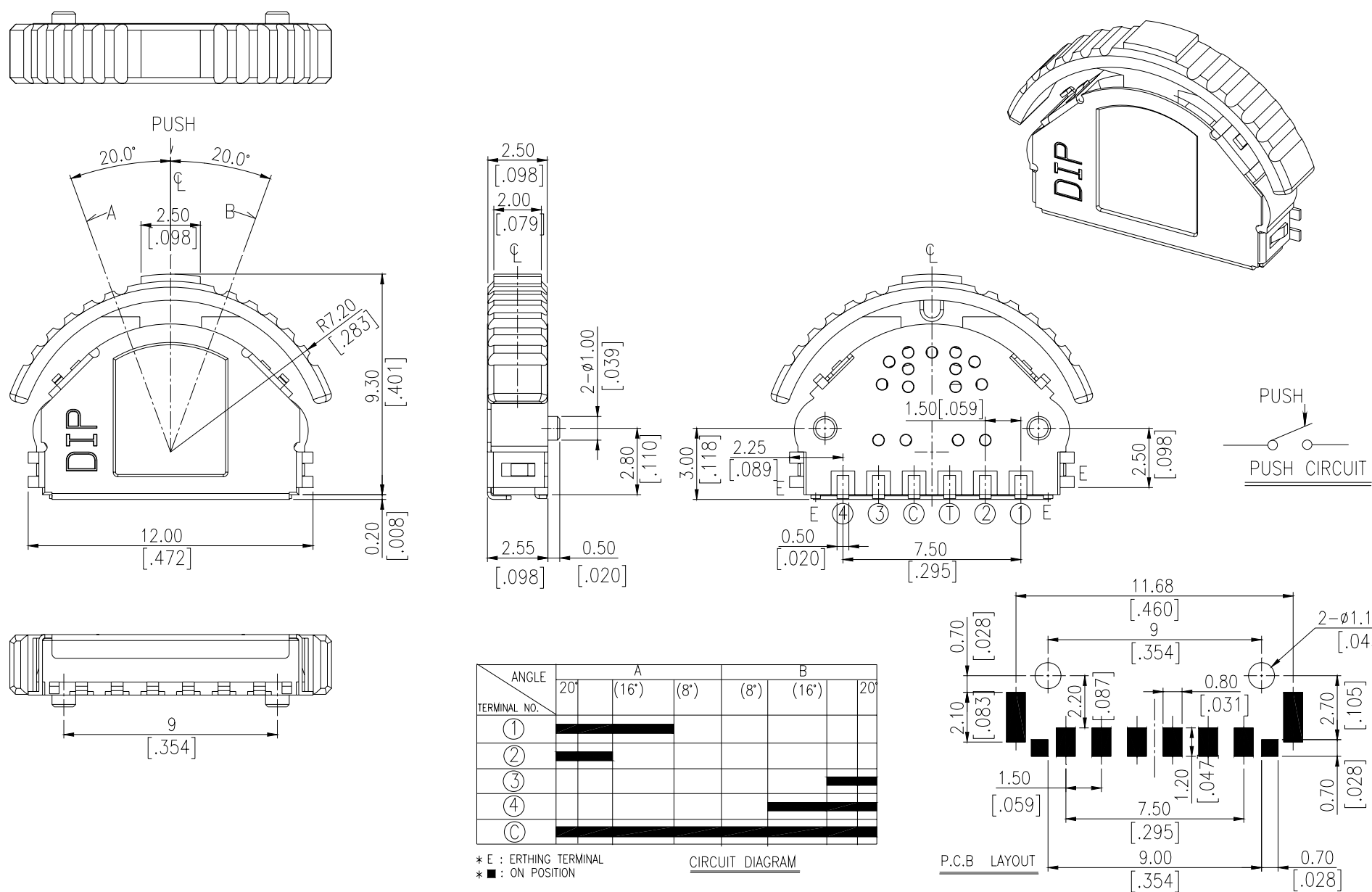
* E : ERTHING TERMINAL
* ■ : ON POSITION

CIRCUIT DIAGRAM



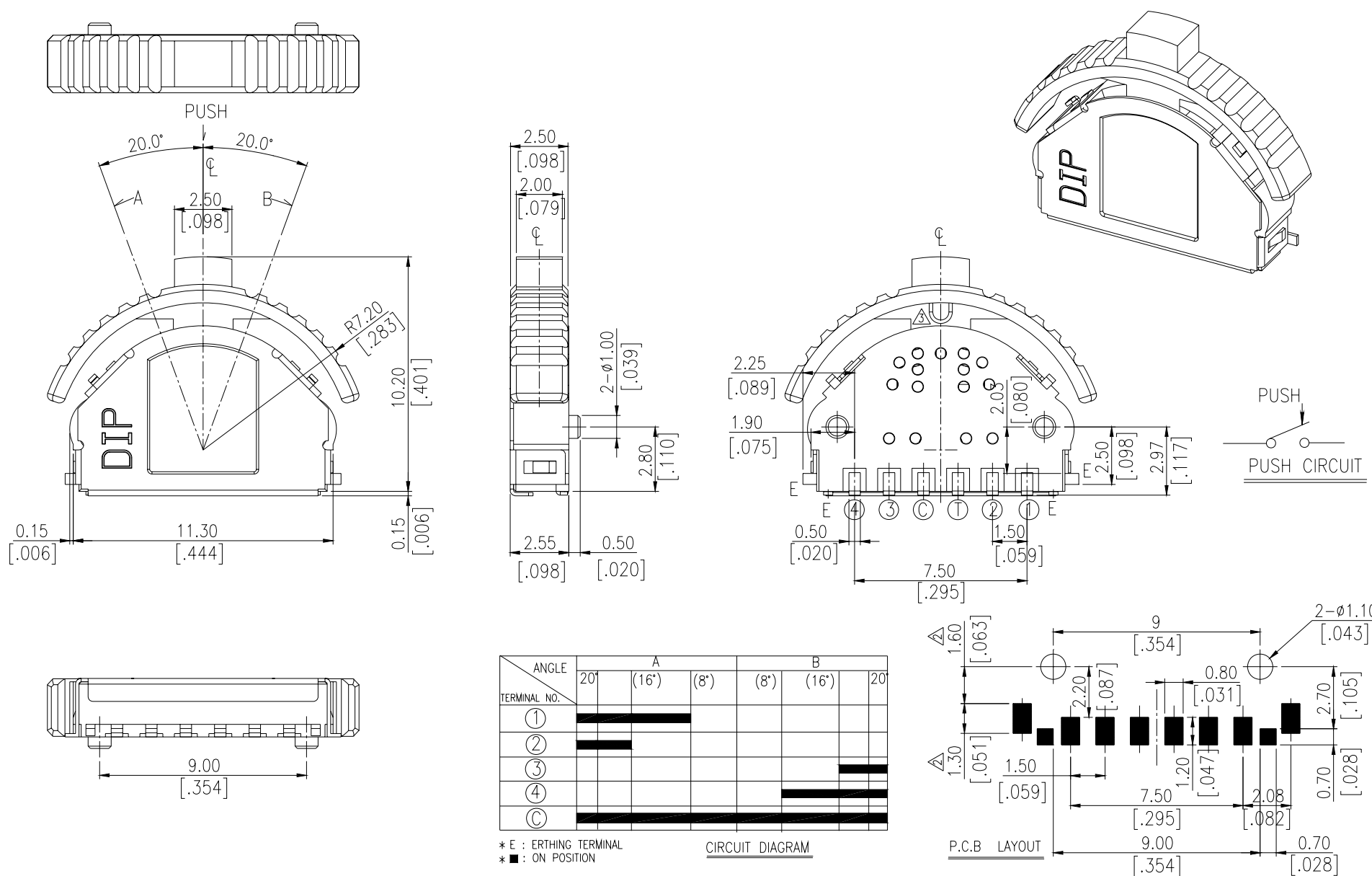
General Tolerance : ±0.20mm

PLJG1



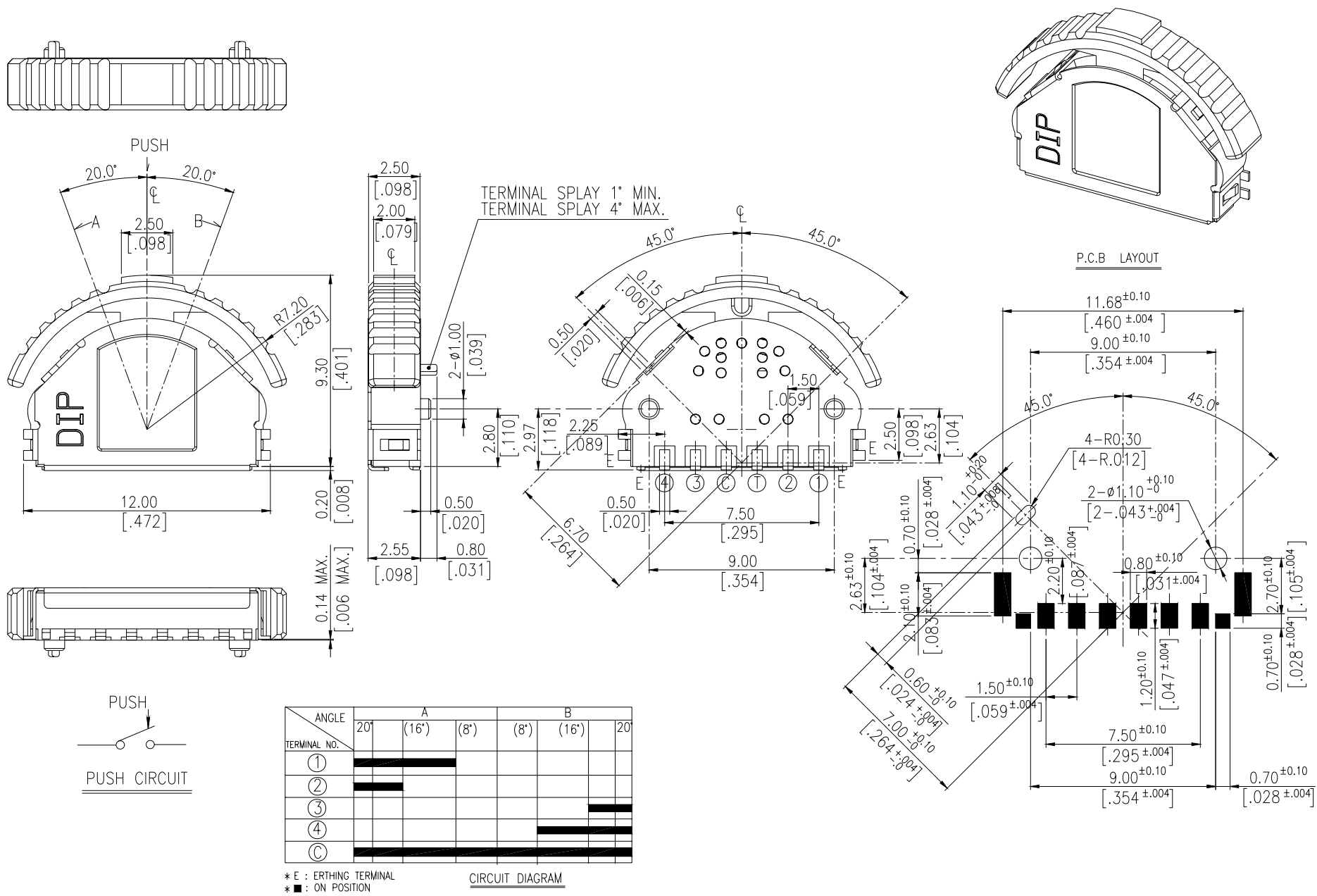
General Tolerance : ±0.20mm

PLJG□H



General Tolerance : ±0.20mm

PLJG2



General Tolerance : ±0.20mm

HOW TO ORDER

PL □ □ □ - □ □ - □ □ - □ □

Package Style :
□ = Tape & Reel

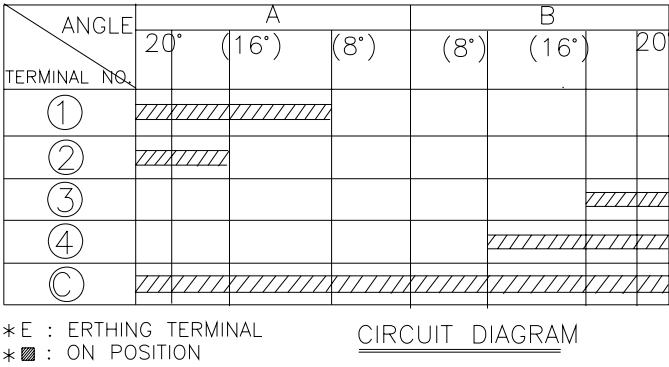
Soldering :
V = Lead Free Solderable

H = High Actuator
□ = Standard

G = Gray
K = Black
□ = Two Ground Pins
1 = Four Ground Pins
2 = Alignment Pins
G = Ground Terminal
□ = Without Ground Terminals

Termination Type :
J = S.M.T J BEND Terminals

Push & Lever Switch



△ MECHANICAL

Operation Force: (A) Force on return actuator

(A) $40 \pm 20 \text{ gf.}$

(B) Force on center push direction

(B) $150 \pm 50 \text{ gf.}$

Operation Temp: -10°C to +70°C

Storage Temperature: -25°C to +80°C

△ ELECTRICAL

Electrical Life: 100,000 operation cycles

Non-switching Rating: 100mA, 50VDC

Switching Rating: 10mA, 5VDC

Contact resistance: (a) 100mΩ max. at initial

(b) 200mΩ max. after life test

Insulation Resistance: 100MΩ min. 100VDC

Dielectric Strength: 100VAC/ minute

Capacitance : 5pF max.

Circuit: Single pole single throw.

△COVER: Stainless Steel

△BASE: UL94V-0 PPS Thermoplastic

Color: Brown

△ STEM: UL94HB Nylon Thermoplastic

Color: Gray, Black

△CONTACT DISC: Phosphor bronze with silver cladding at contact surface

△TERMINAL: Phosphor bronze with silver cladding at contact surface

△ SPRING: SWP or SUS

For best results, please follow these recommendations: \triangle Temperature Profile:

△ HAND SOLDERING : Use a soldering iron of 30 watts,

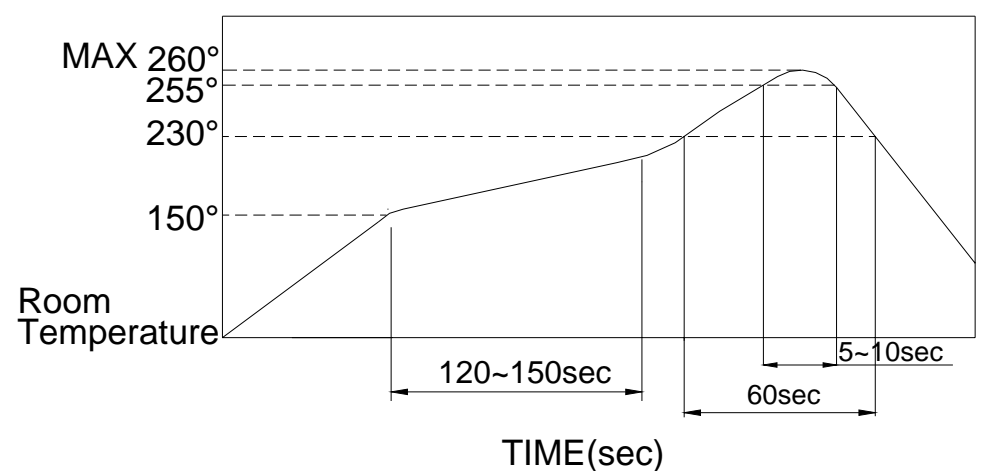
Controlled at 350°C approximately 5 seconds while

Applying solder.

△REFLOW SOLDERING: When applying reflow

soldering the peak temperature of the reflow oven

should be set to 260°C max.



Part Number

Number
Per TubeNumber Per
Reel

PLJ(G) 、 1

—

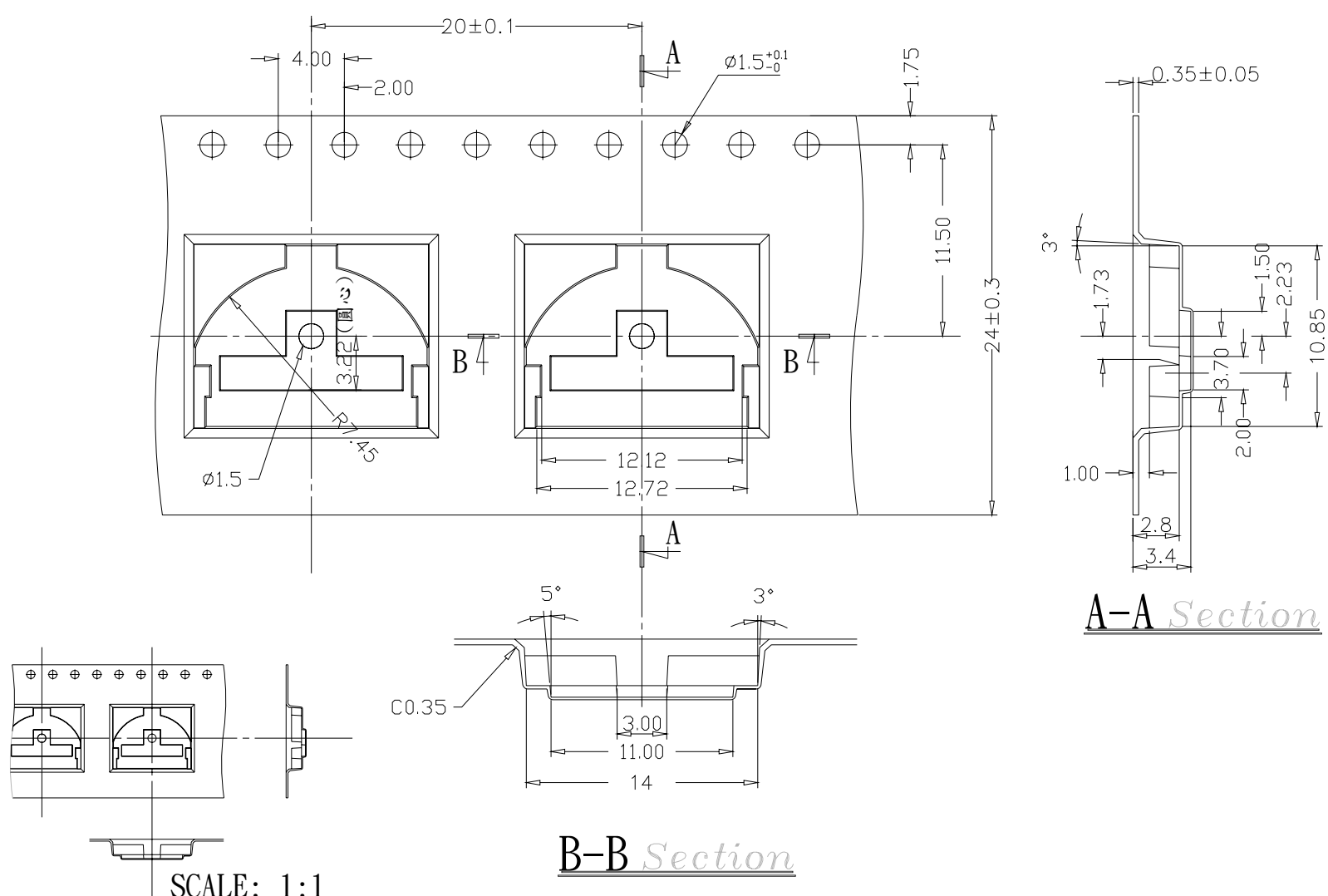
1000

PLJG2

1

900

PLJ-H REEL



General Tolerance : $\pm 0.1\text{mm}$

