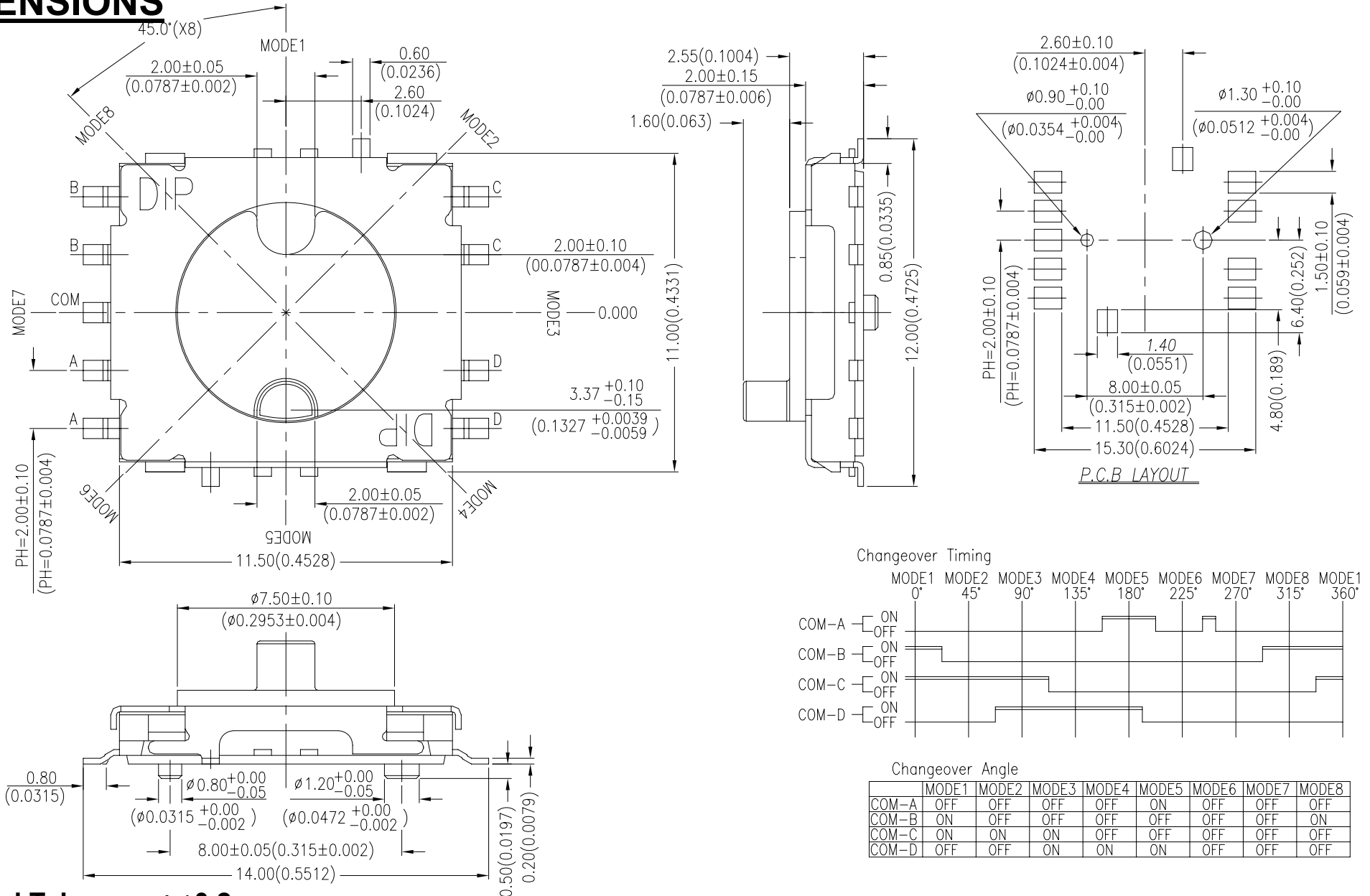


SRM SERIES



DIMENSIONS



General Tolerance : ±0.2mm

HOW TO ORDER

SR ☐ - 8R ☐ ☐ ☐ - ☐ - ☐

Package Style:
T/R=Tape & Reel

Soldering:
V=Lead Free Solderable

☐=Non-click Actuation Force
& Color: Black
N=130±50gf Actuation
Force & Color : Brown
B=40±30gf Actuation
Force & Color : Blue

☐=Without Ground Terminal
G=With Ground Terminal

Circuit:
7 = 7 Circuits , Black
8 = 8 Circuits , Brown

Number of Steps:
8 =8 Steps

Terminal Type
M=S.M.T

LOW-Profile Rotary Switch

SPECIFICATION

△MECHANICAL

Mechanical Life: 200mΩ max. 10,000 cycles
Operating Force: N=130±50gf
B=40±30gf

△ENVIRONMENTAL

Operation Temperature: -20℃ to +80℃
Storage Temperature: -40℃ to +85℃

△ELECTRICAL

Electrical Life: 200mΩ max. 10,000 cycles
Switching Rating: 25mA, 24VDC
Contact Resistance: (a)70mΩ max. (Initial)
(b)200mΩ max. (final)
Insulation Resistance: 100MΩ min. at 500VDC
Voltage Proof: 300VAC for 1 minute

MATERIAL

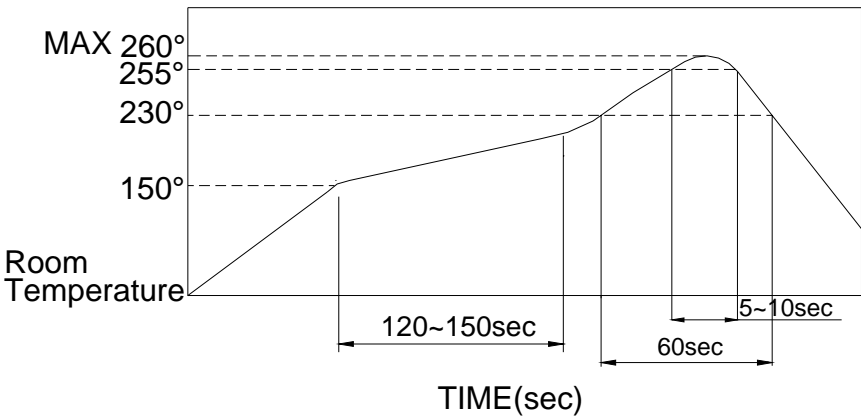
△COVER: Nickel silver
△BASE / STEM: UL94V-0 Nylon High-Temp Thermoplastic
Color: Black
△CONTACT : Alloy Copper
△SPRING PLATE: Stainless Steel
△TERMINAL: Brass with silver plated.

SOLDERING PROCESS

△HAND SOLDERING : Use a sold iron of 30 watts, controlled at 350℃ approximately 5 seconds while applying.

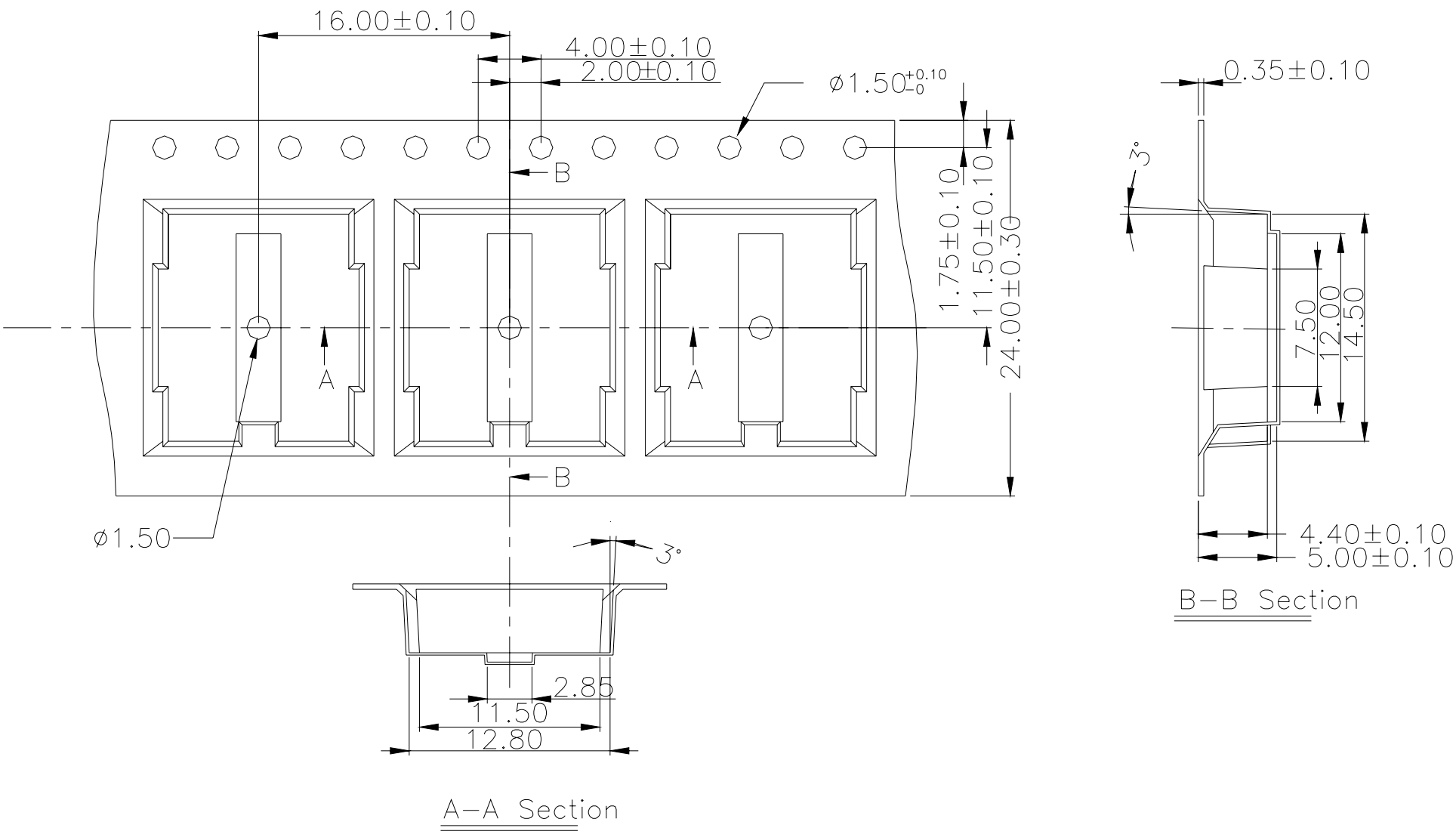
△REFLOW SOLDERING: When applying reflow soldering, the peak temperature or the reflow over should be set at 260℃ max.

△Reflow Temperature Profile:



PACKING

Tape and Reel: 900 pcs/reel



General Tolerance : ±0.1mm