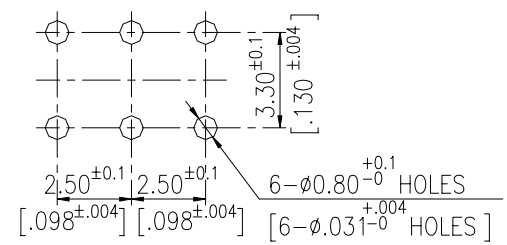
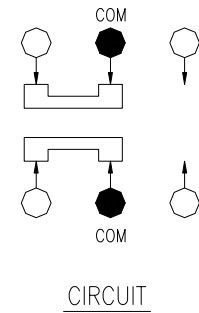
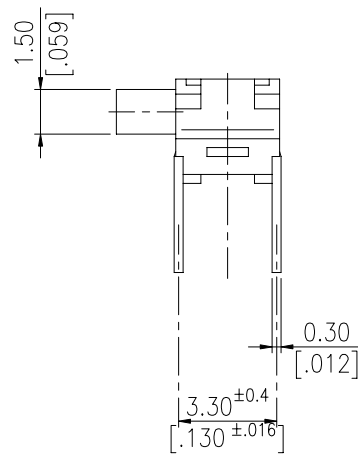
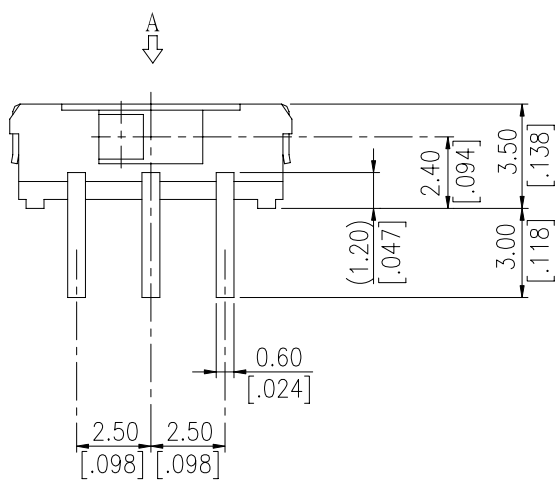
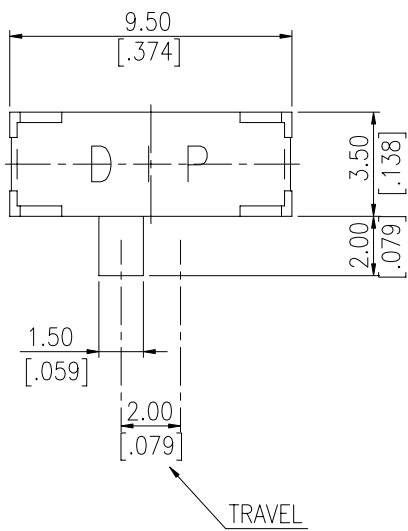


# LSS SERIES

## DIMENSIONS

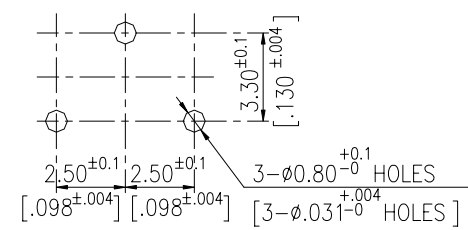
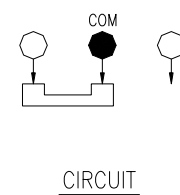
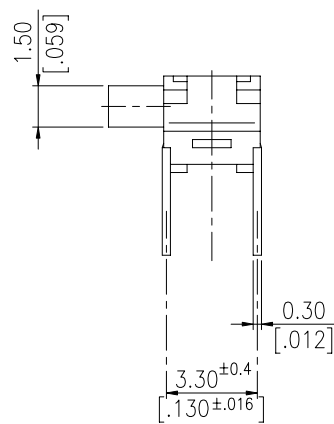
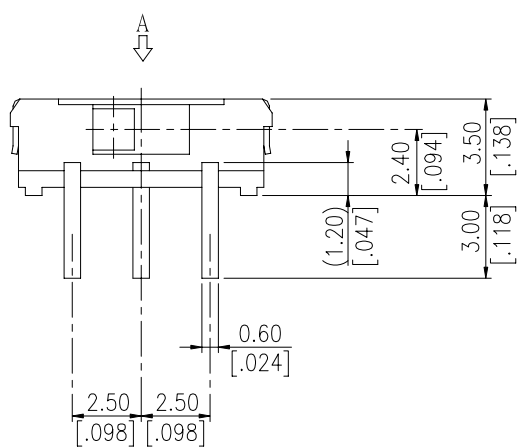
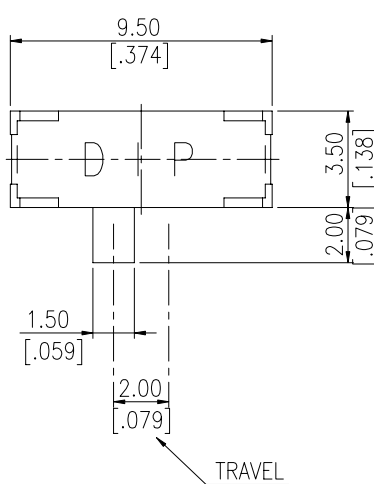
### LSS22



P.C.B. LAYOUT  
(VIEW FROM THE DIRECTION A)

General Tolerance : ±0.2mm

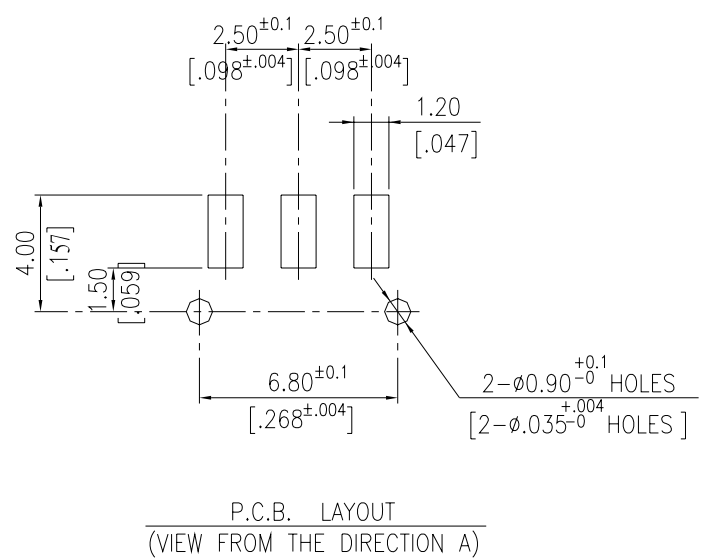
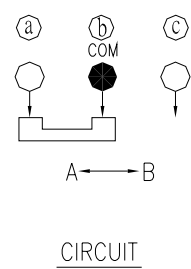
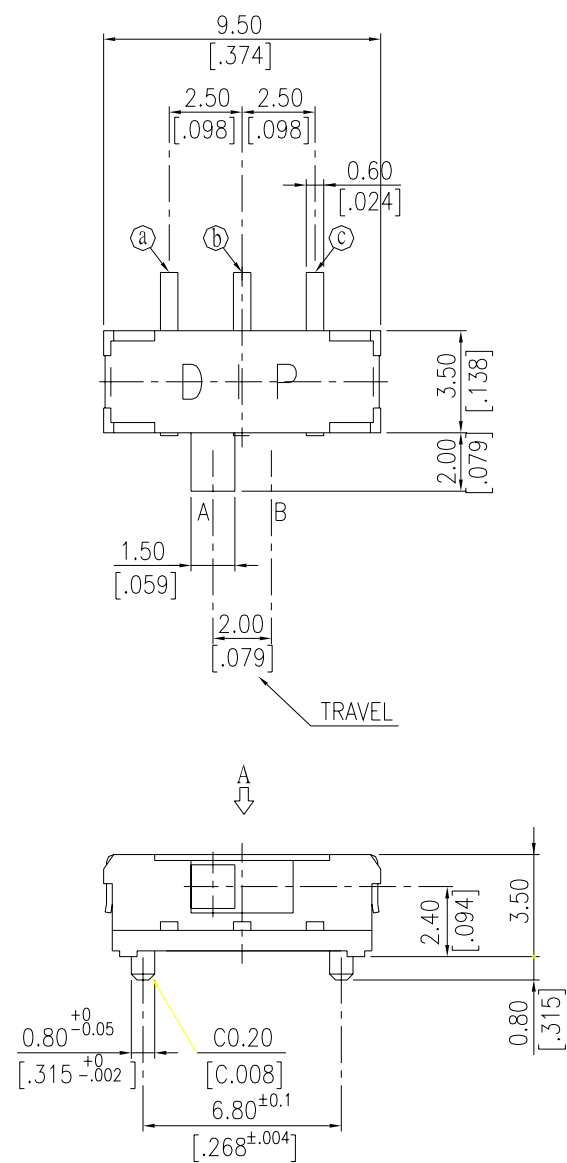
### LSS12



P.C.B. LAYOUT  
(VIEW FROM THE DIRECTION A)

General Tolerance : ±0.2mm

LSSM12-P



General Tolerance :  $\pm 0.2\text{mm}$

HOW TO ORDER

LSS ☐ ☐ ☐ - ☐ ☐ ☐ - V - ☐

Package Style :

- ☐ = Bag
- B = Tube
- $\Delta$ T/R = Tape & Reel
- ( $\Delta$ LSS & LSSM Except Terminal 2.5 、 3.0mm)

Soldering :

- V = Lead Free

Stem direction:

- ☐ = Left
- C = Right(Only for LSSM)

☐=Without Pilot

P = Base With Pilot(Only for LSSM)

Terminal Length :

- ☐ = 3.0mm
- L = 2.50mm
- M = 2.20mm
- N = 1.80mm
- P = 1.0mm
- S = 0.9mm
- Q = 1.5mm

Number Of Pin :

- 12 = 1P2T
- 22 = 2P2T

☐=Through Hole

M = S.M.T

SPECIFICATION

△MECHANICAL

Operation Force: 200±150  
Operation Temp: -10℃ to +60℃  
Storage Temp: -20℃ to +70℃  
Electrical : 10,000 cycles  
Rating : 0.1 A, 12 VDC

△ELECTRICAL

Electrical Life: 10,000 cycles  
Non-switching Rating: 100mA, 50VDC  
Switching Rating: 25mA, 24 VDC  
Contact Resistance: 100mΩ max.  
Insulation Resistance: 100MΩ min. (500VDC)  
Dielectric Strength: 500VAC/ 1minute  
Circuit: 1P2T, 2P2T

MATERIAL

△COVER: Stainless steel  
△BASE: LCP High-Temp thermoplastic  
Color: Black  
△ACTUATOR: LCP High-Temp thermoplastic  
Color: Black  
△CONTACT: Alloy copper  
△TERMINAL: Brass

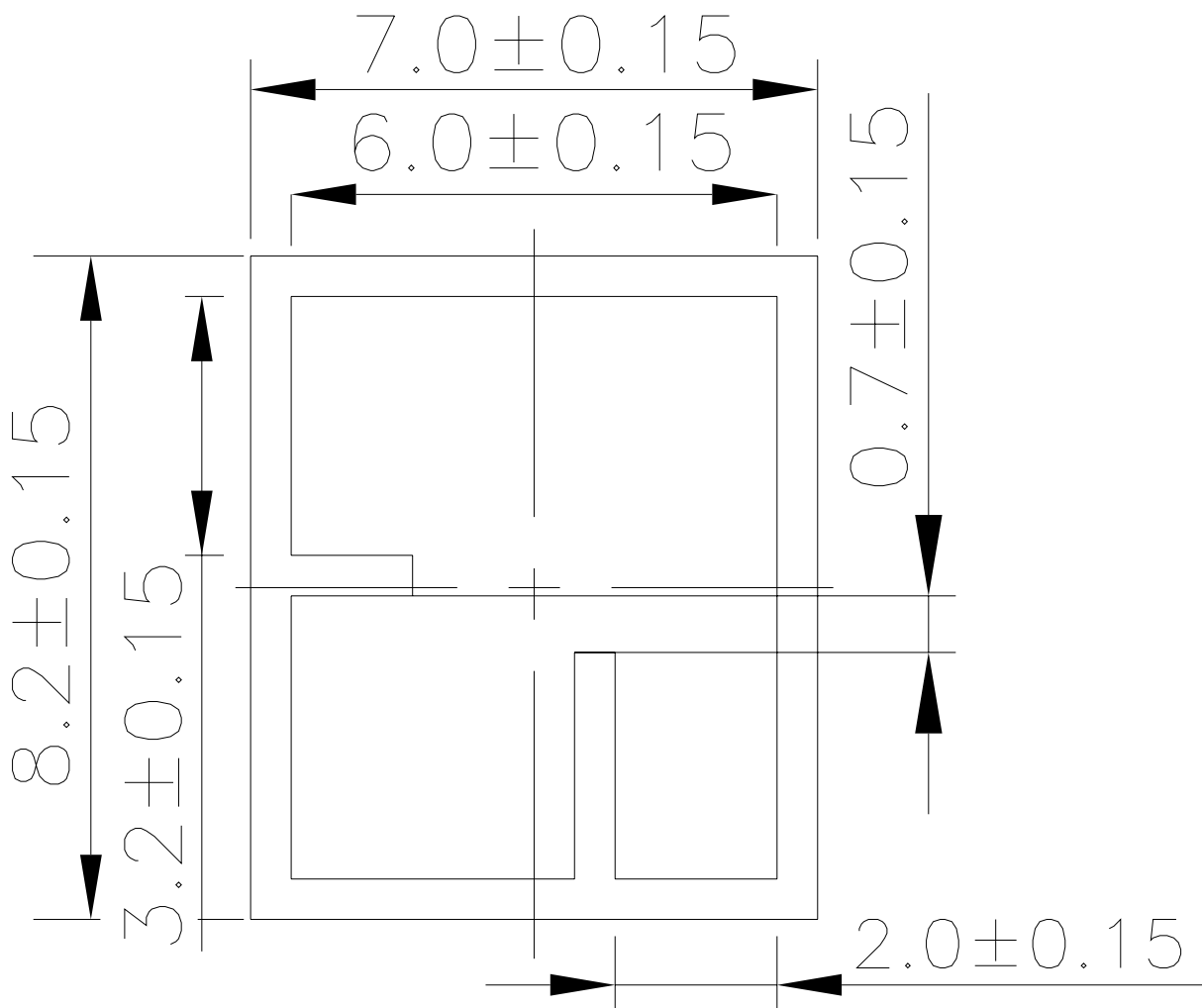
SOLDERING PROCESS

△HAND SOLDERING : Use a soldering iron of 30 watts, Controlled at 350℃ approximately 5 seconds while applying solder.  
  
△REFLOW SOLDERING : When applying reflow soldering, the peak temperature or the reflow oven should be set to 260℃ max.

PACKING

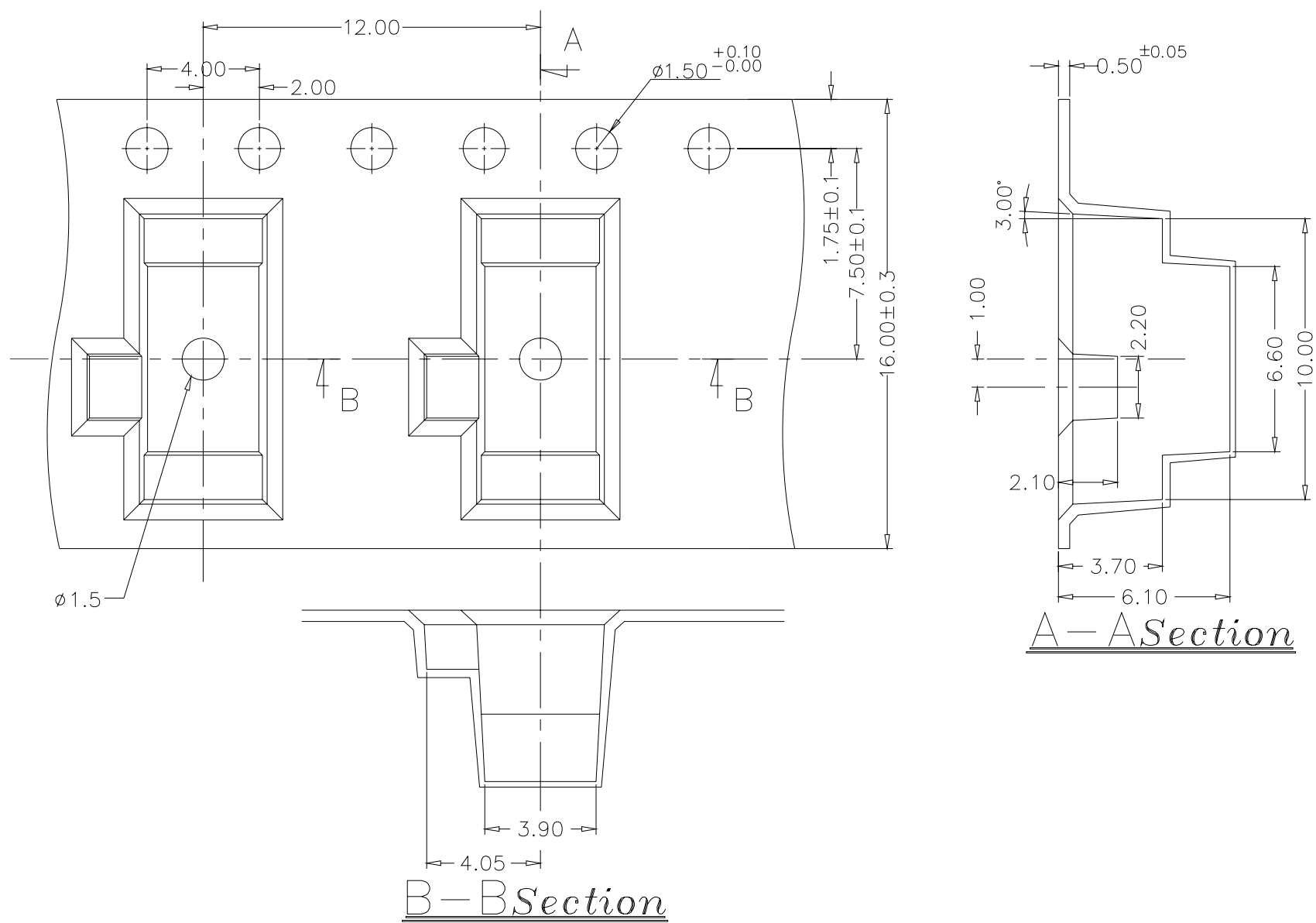
	Part Number	Number Per Reel	Number Per Tube
	LSS12 、 22	900	50

LSS TUBE



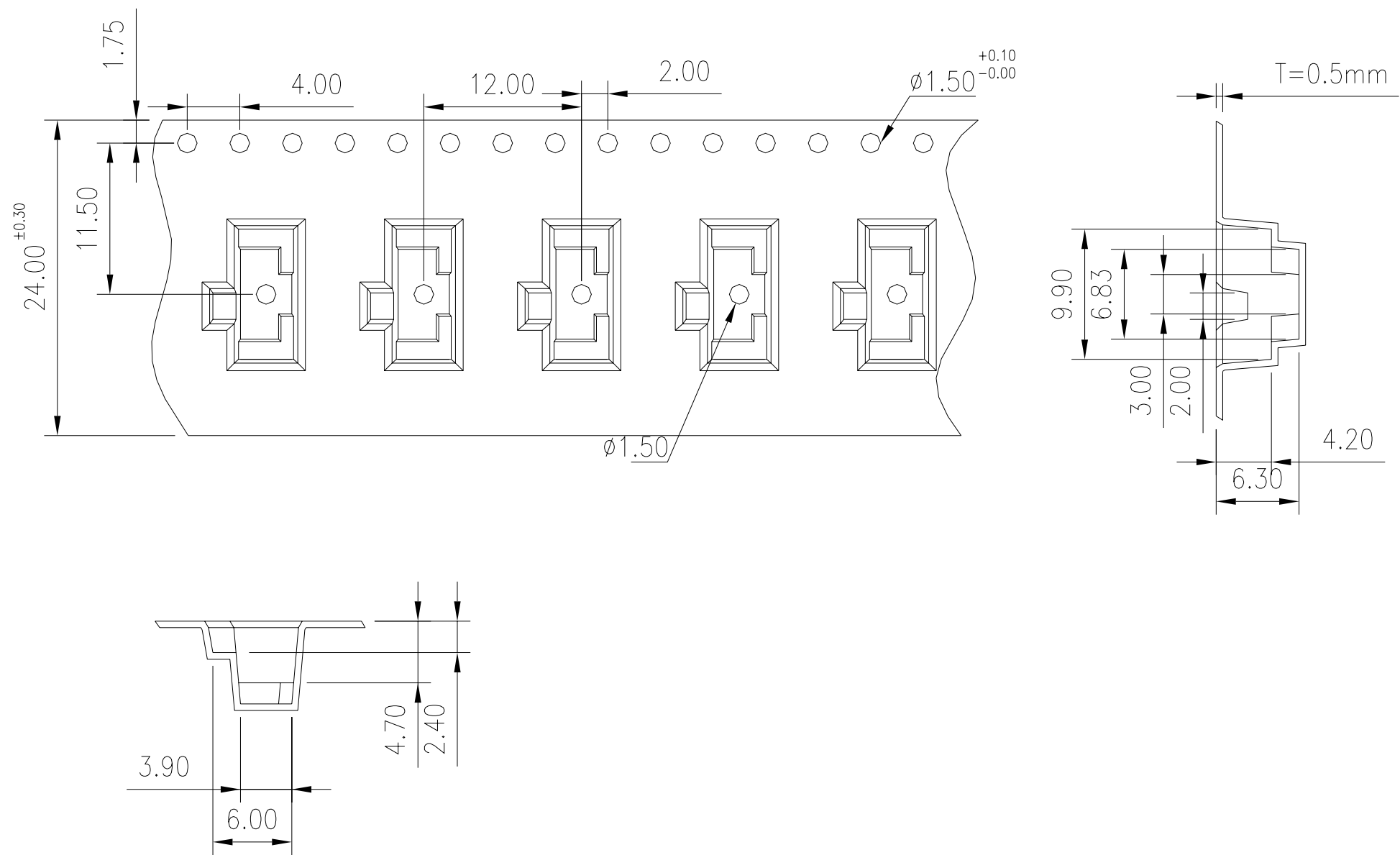
General Tolerance : ±0.2mm

LSS 22 REEL



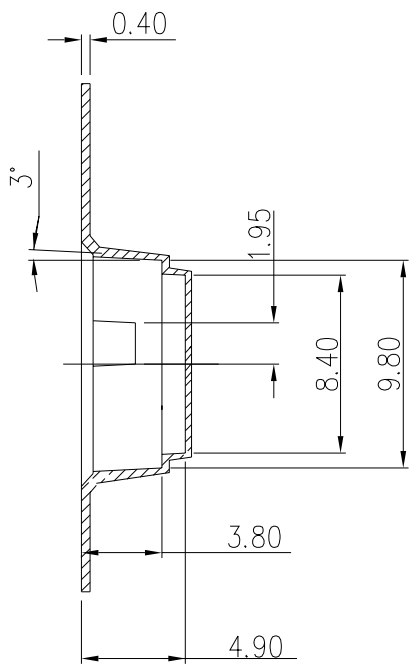
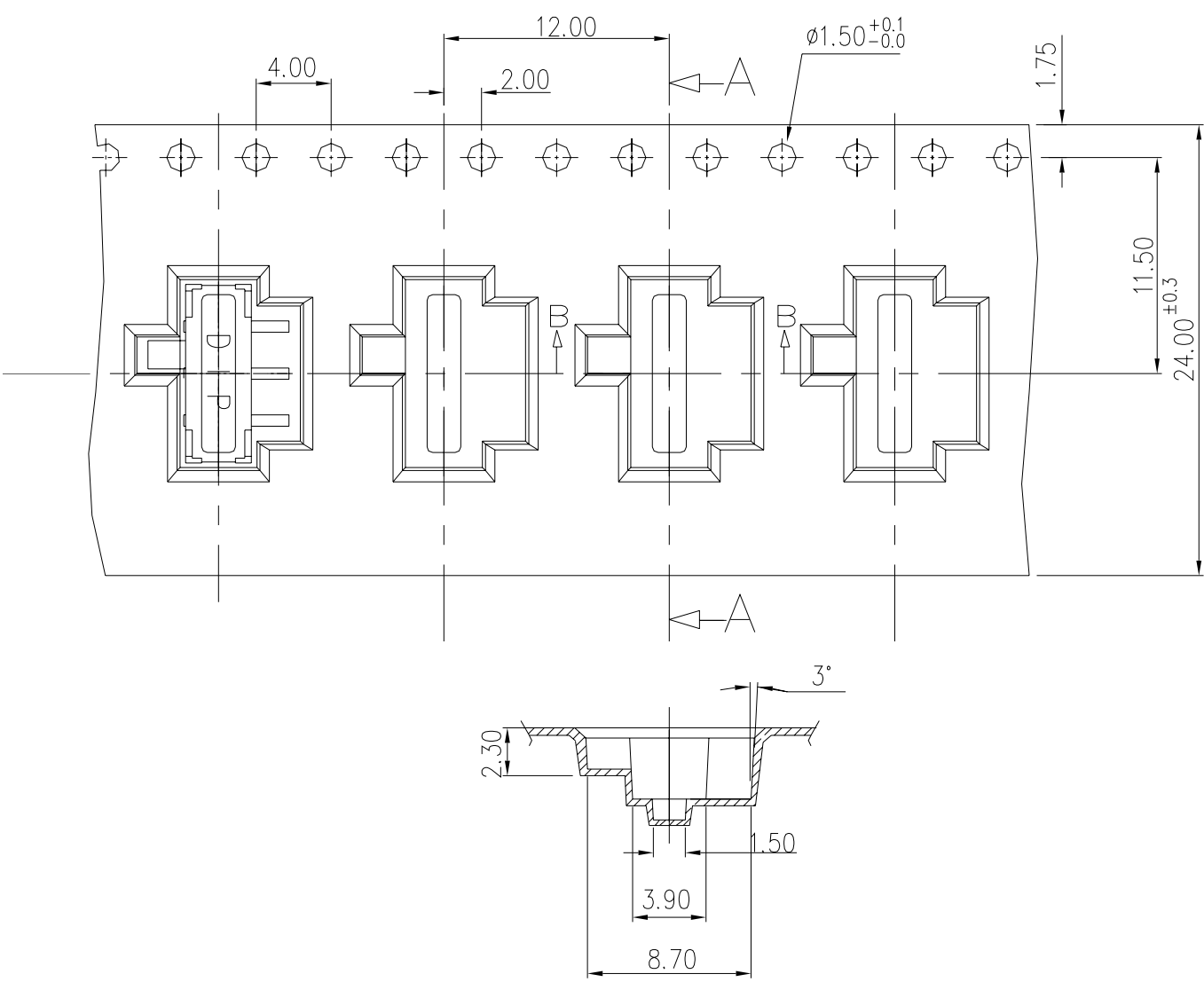
General Tolerance : ±0.1mm

LSS12 REEL



General Tolerance : ±0.1mm

LSSM REEL



A-A Section

General Tolerance : ±0.1mm