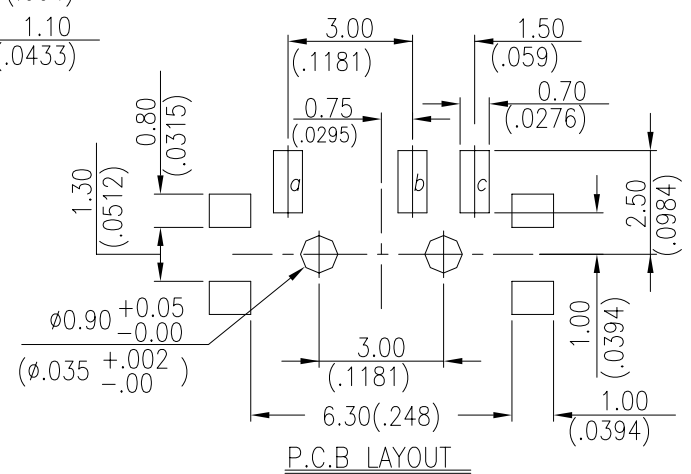
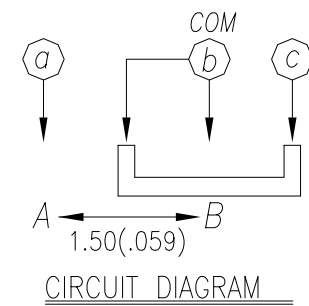
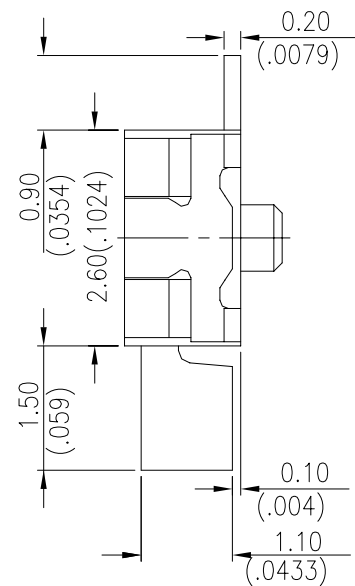
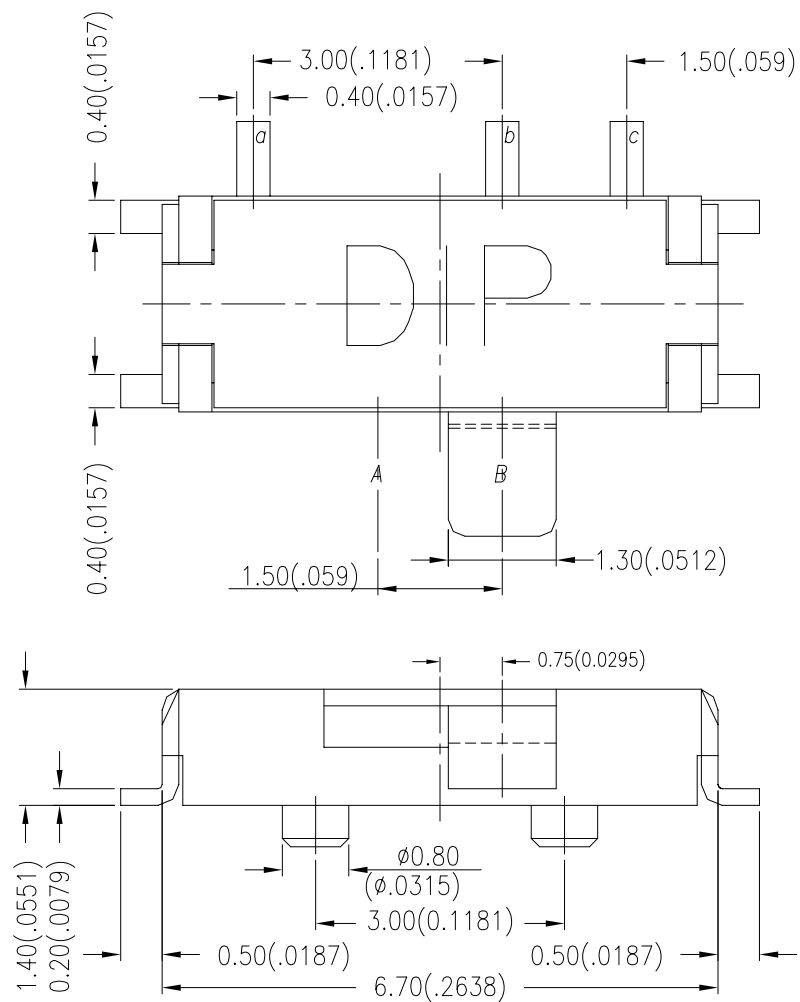


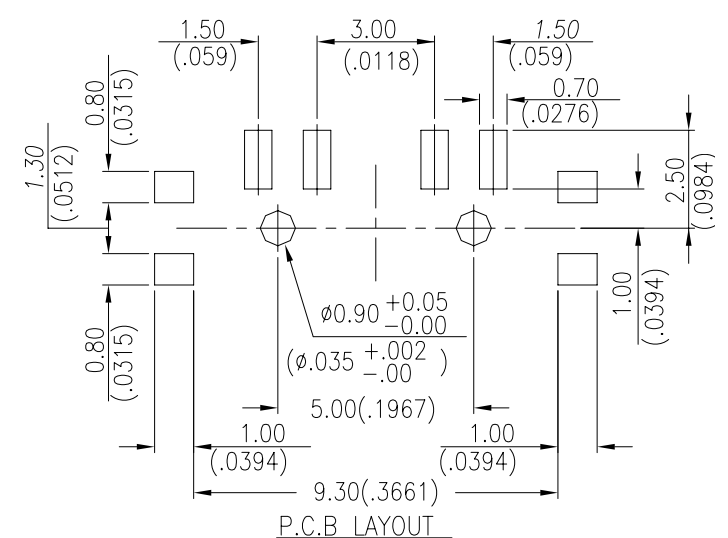
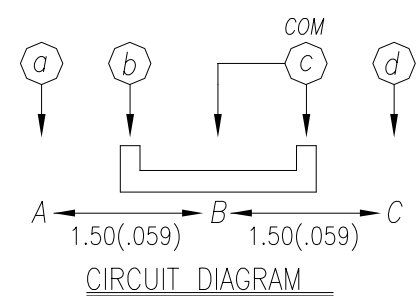
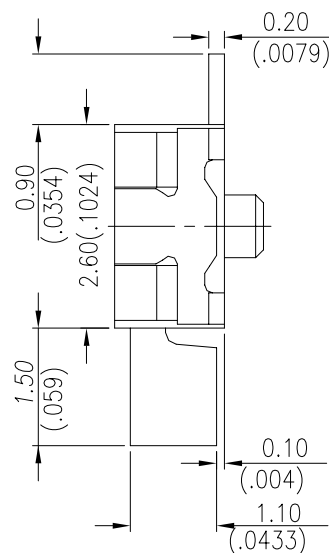
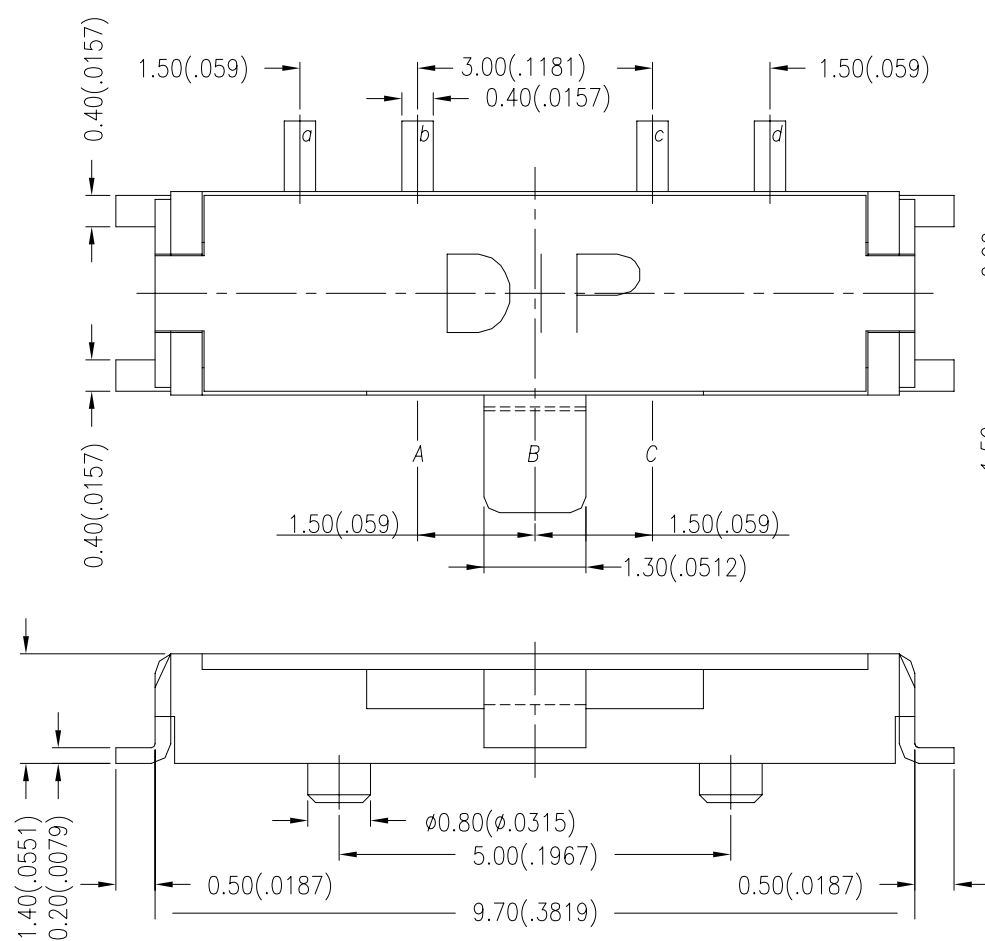
DIMENSIONS

MSS3



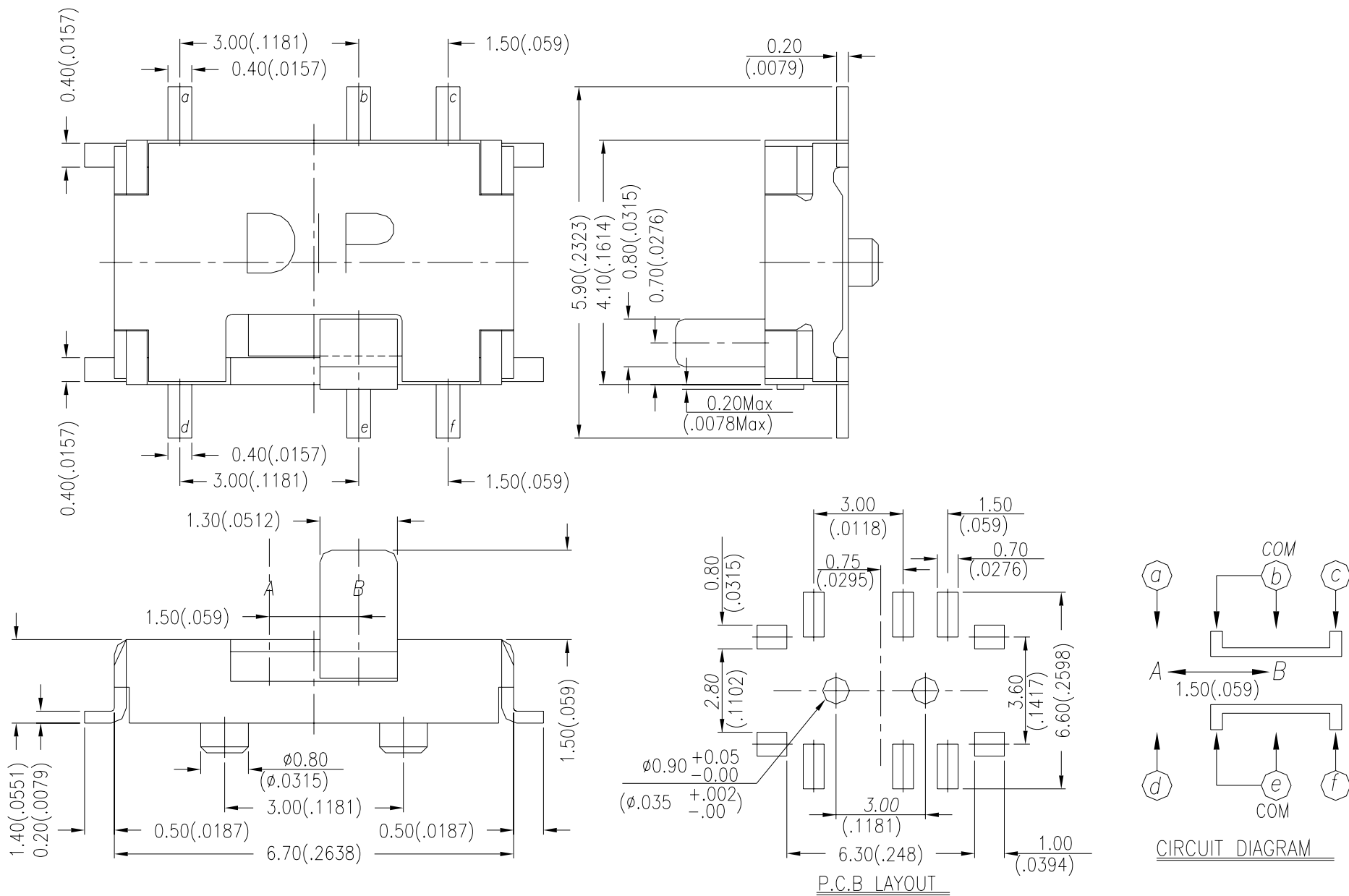
General Tolerance : $\pm 0.2\text{mm}$

MSS4



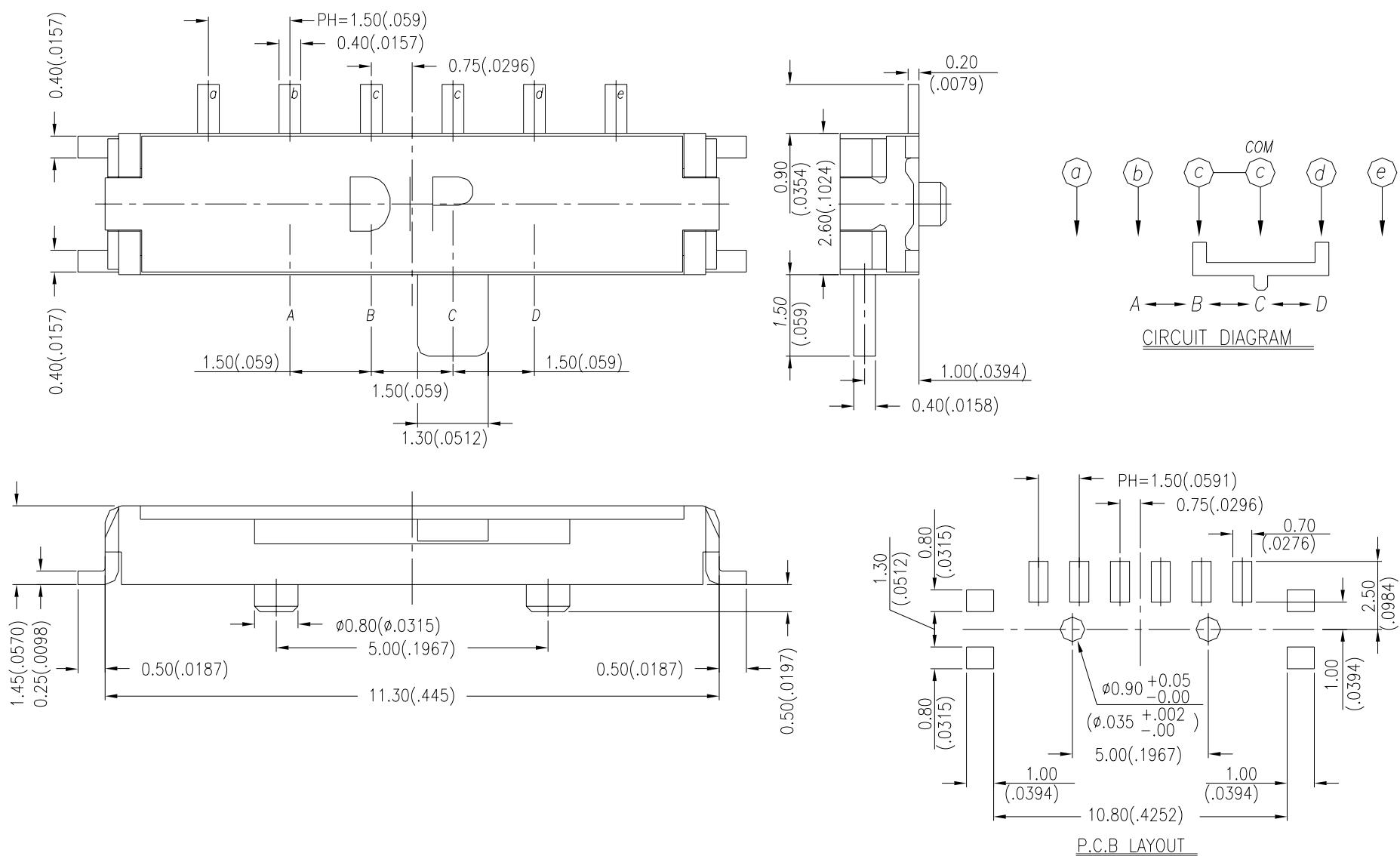
General Tolerance : $\pm 0.2\text{mm}$

MSS6



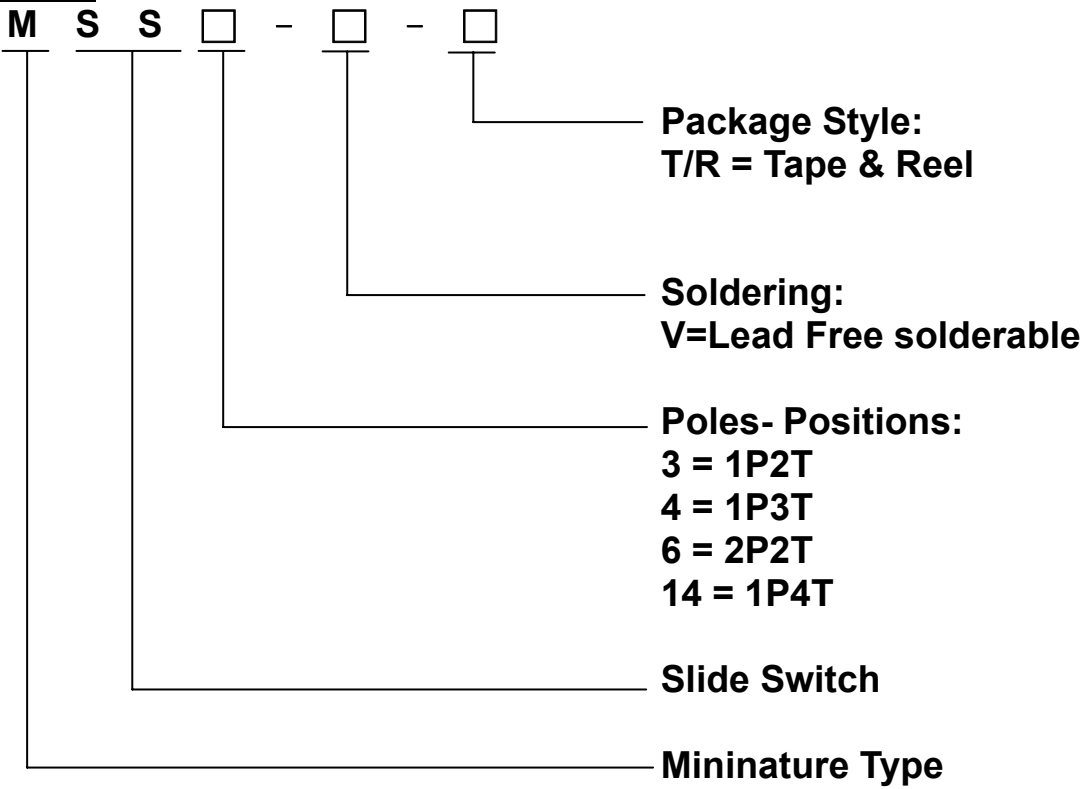
General Tolerance : $\pm 0.2\text{mm}$

MSS14



General Tolerance : $\pm 0.2\text{mm}$

HOW TO ORDER



SPECIFICATION

△MECHANICAL

Prod	Operation Force:
MSS3	150±100gf (1.47N±0.98N)
MSS4	A→B 150±100gf (1.47N±0.98N)
	B→C 200±150gf (1.96N±1.47N)
	C→B 150±100gf (1.47N±0.98N)
	B→A 200±150gf (1.96N±1.47N)
MSS6	200±150gf (1.96N±1.47N)
MSS14	B→C 200±150gf (1.96N±1.47N)
	C→D 200±150gf (1.96N±1.47N)
	C→B 200±150gf (1.96N±1.47N)
	B→A 200±150gf (1.96N±1.47N)
	A→B 150±100gf (1.47N±0.98N)
	D→C 150±100gf (1.47N±0.98N)

Stroke: 1.5mm
Operation Temperature: -20℃ to +70℃
Storage Temperature: -40℃ to +85℃

△ELECTRICAL

Electrical Life: 10,000 cycles
Non-switching Rating: 300mA , 4VCD
Switching Rating: 25mA,24VDC
Contact Resistance: 100mΩ max.
Insulation Resistance: 100MΩ min. (500VDC)
Dielectric Strength: 500VAC/ 1minute
Capacitance : 5pF max.
Circuit: SPDT, SP3T, DPDT,SP4T

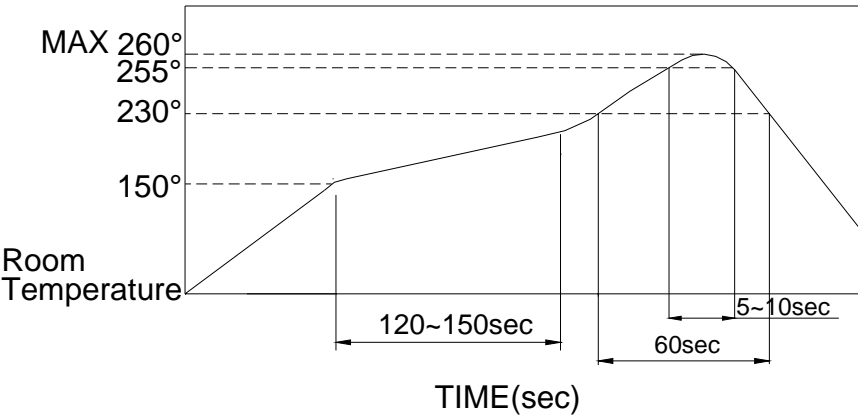
MATERIAL

△COVER: Nickel silver
△BASE: LCP High-Temp thermoplastic
Color: Black
△CONTACT: Alloy copper, gold plated
△TERMINAL: Brass , gold plated
△SPRING PLATE: Stainless steel

SOLDERING PROCESS

△HAND SOLDERING: Use a soldering iron of 30 watts, controlled at 350℃ approximately 5 seconds.

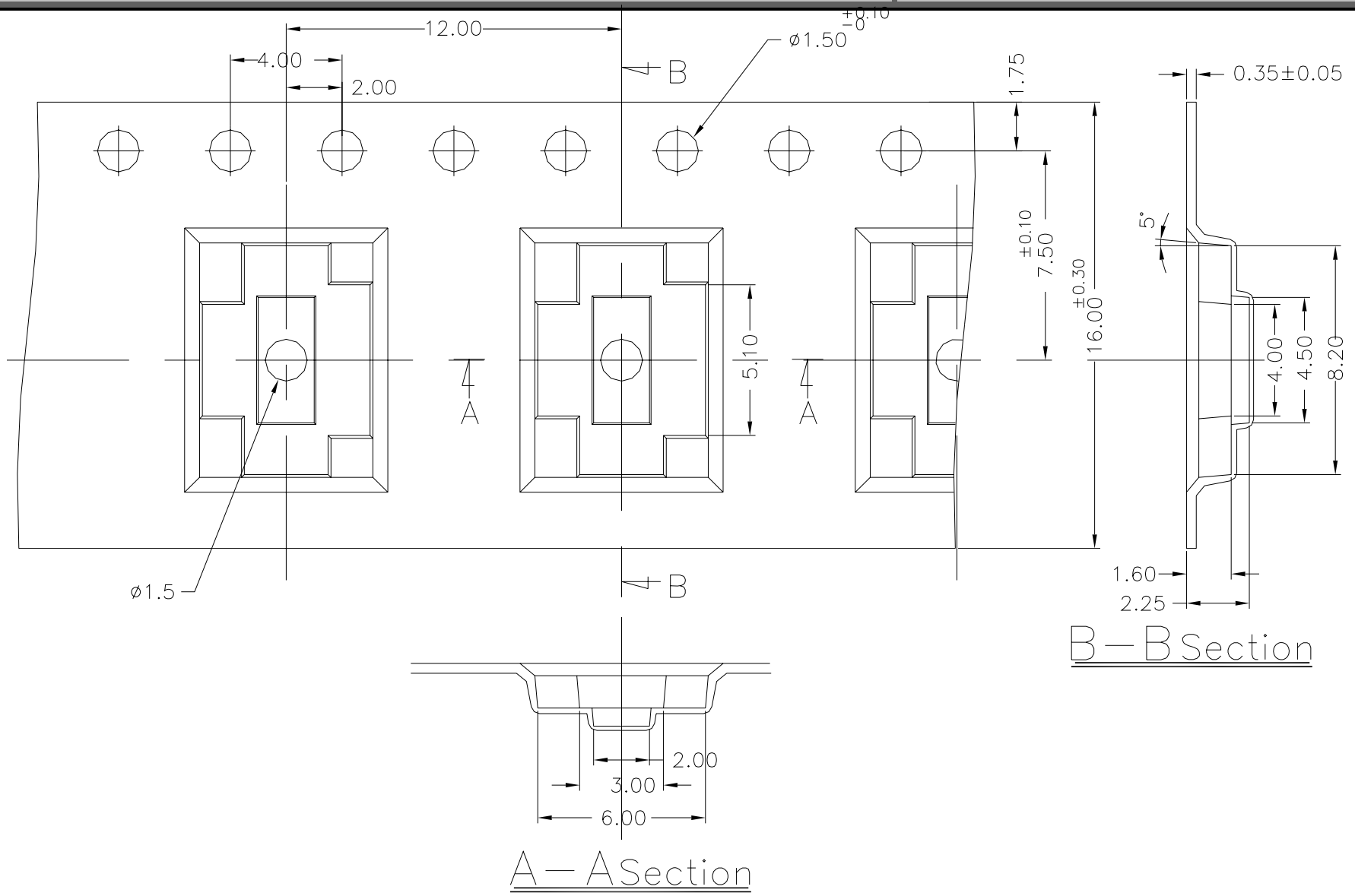
△REFLOW SOLDERING: When applying reflow soldering, the peak temperature or the reflow oven should be set at 260℃ max.



PACKING

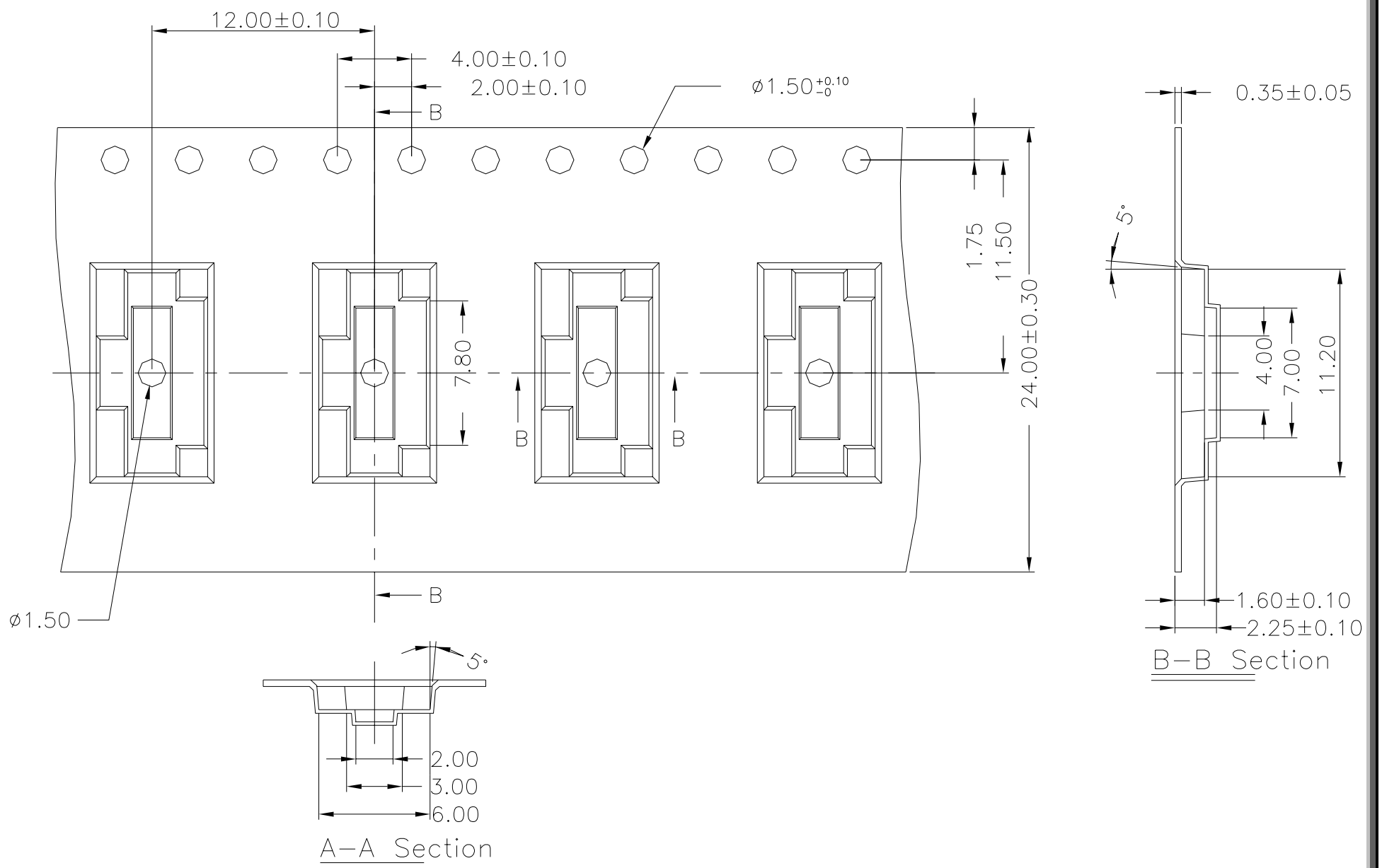
Part Number	Number Per Tube	Number Per Reel
MSS3		2500
MSS4		2500
MSS6		1400
MSS14		2500

MSS3



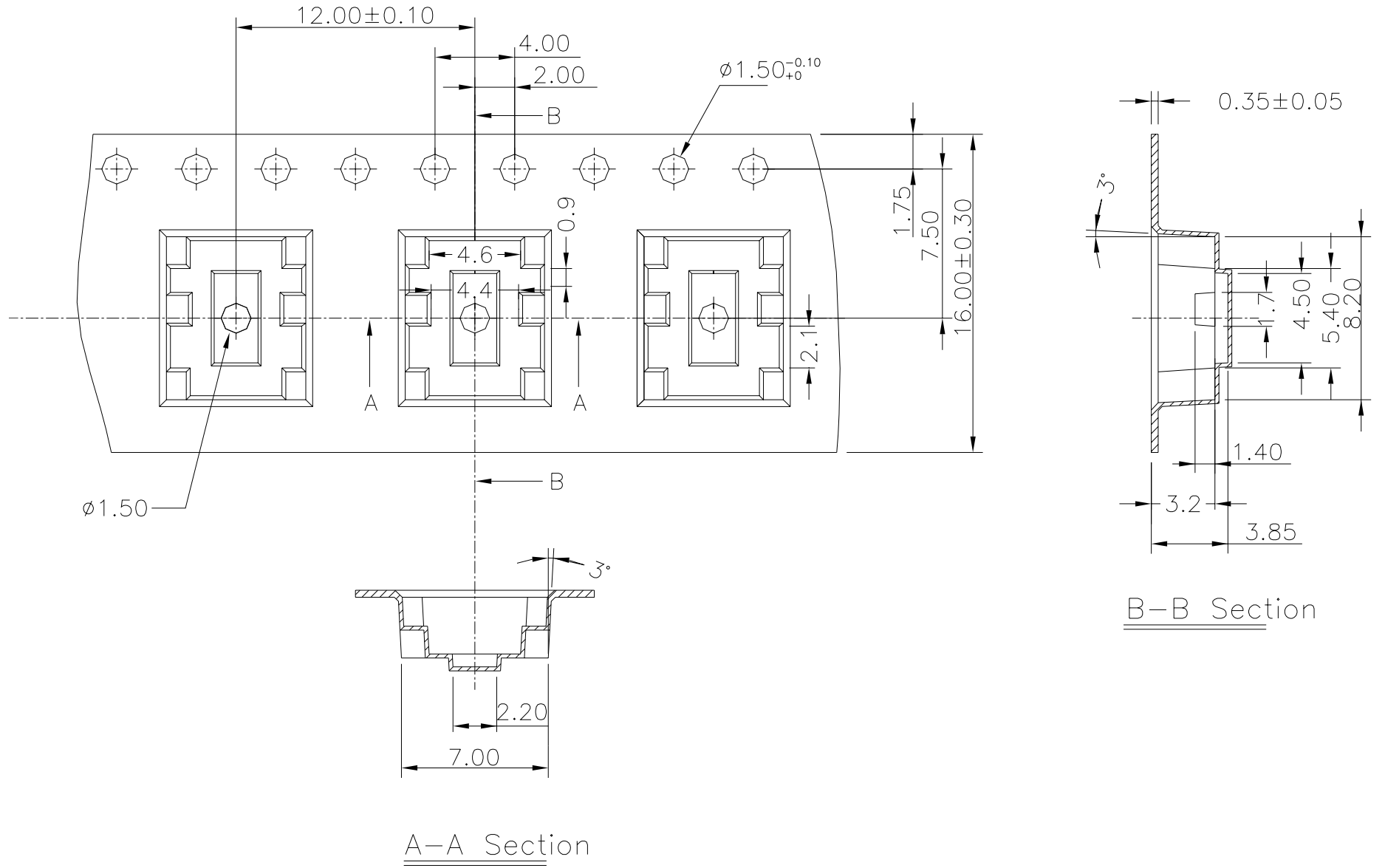
General Tolerance : $\pm 0.1\text{mm}$

MSS4



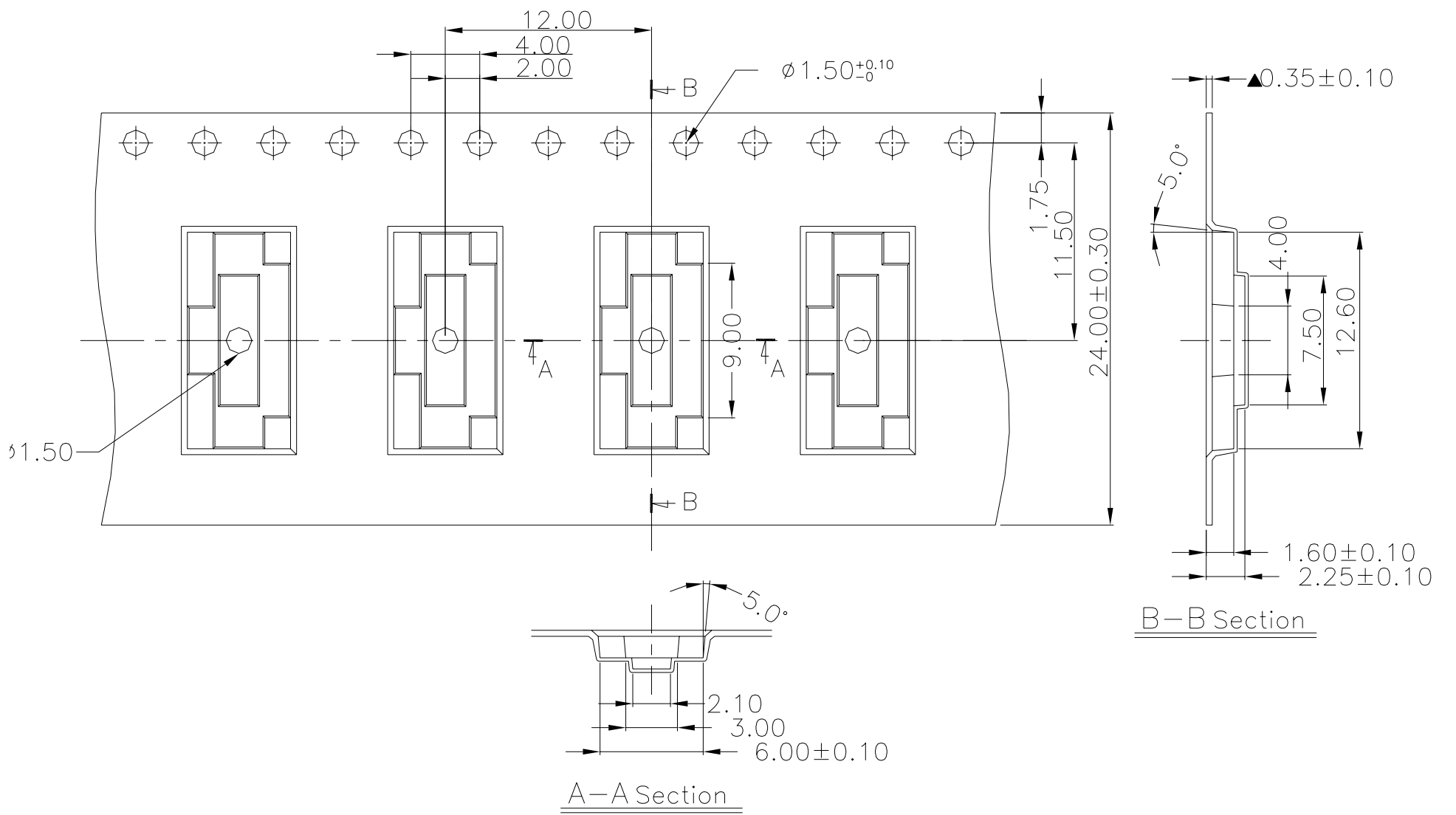
General Tolerance : $\pm 0.1\text{mm}$

MSS6



General Tolerance±0.1mm.

MSS14



General Tolerance $\pm 0.1\text{mm}$.