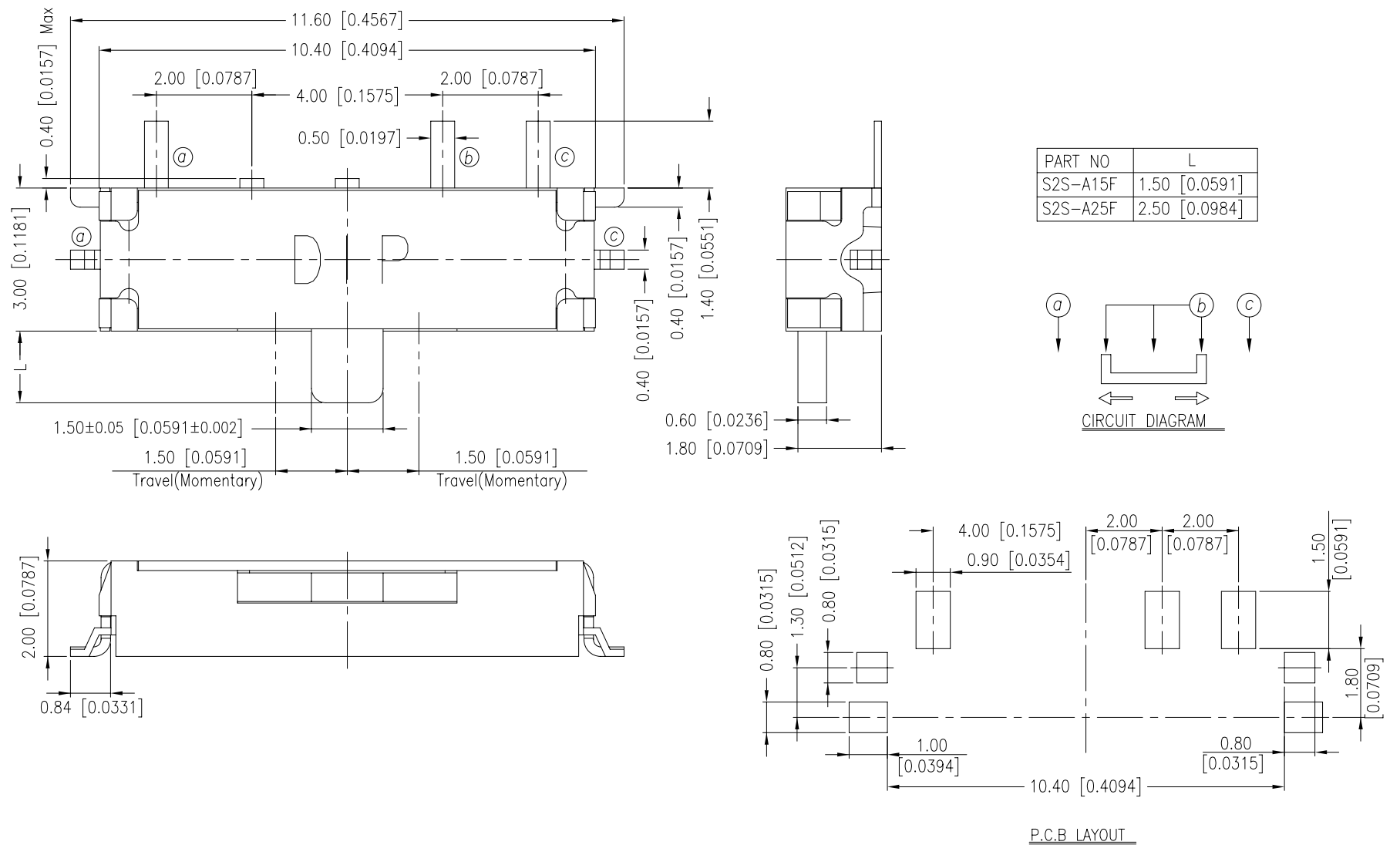


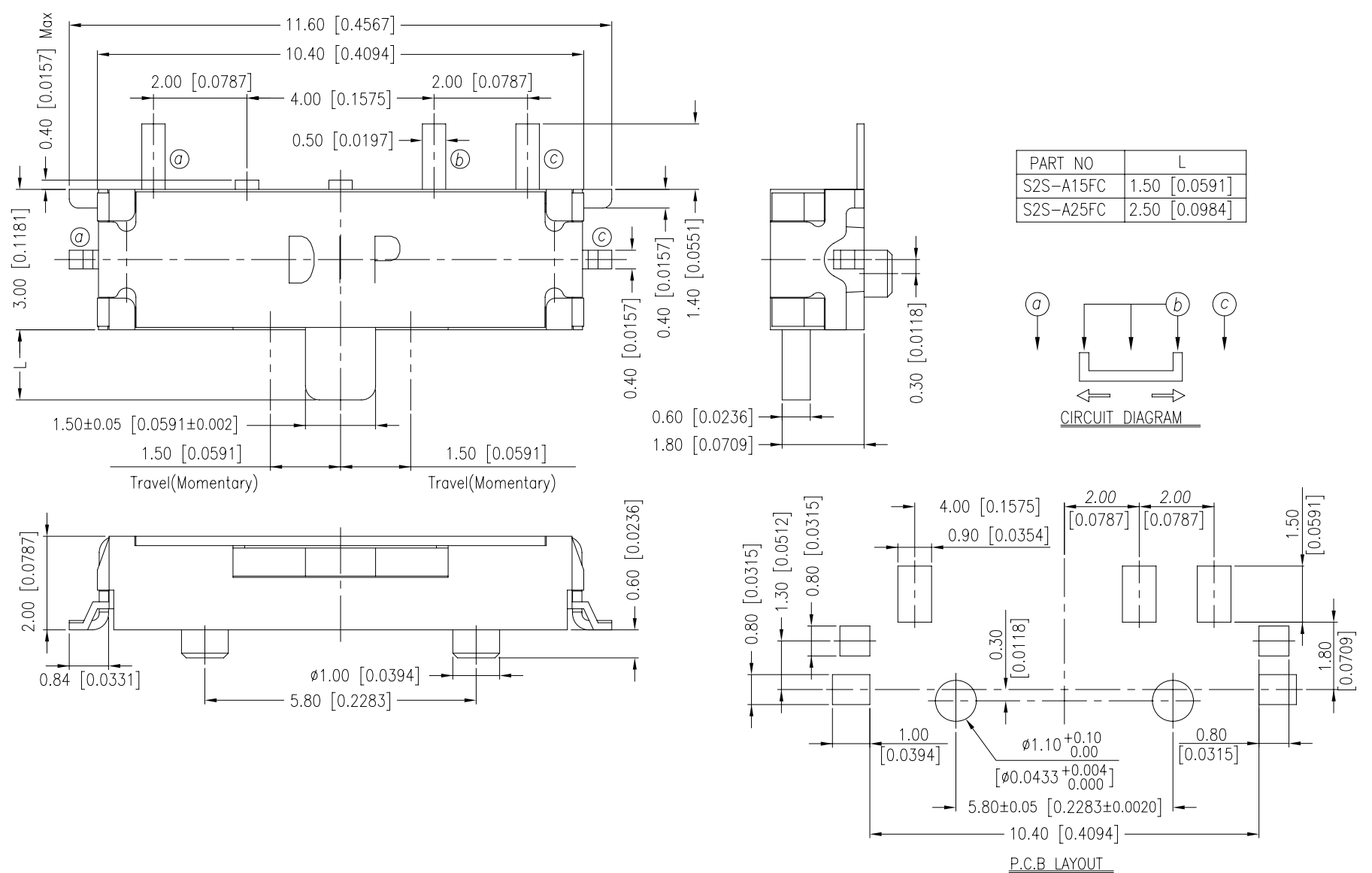
S2S SERIES

DIMENSION

S2S-AF

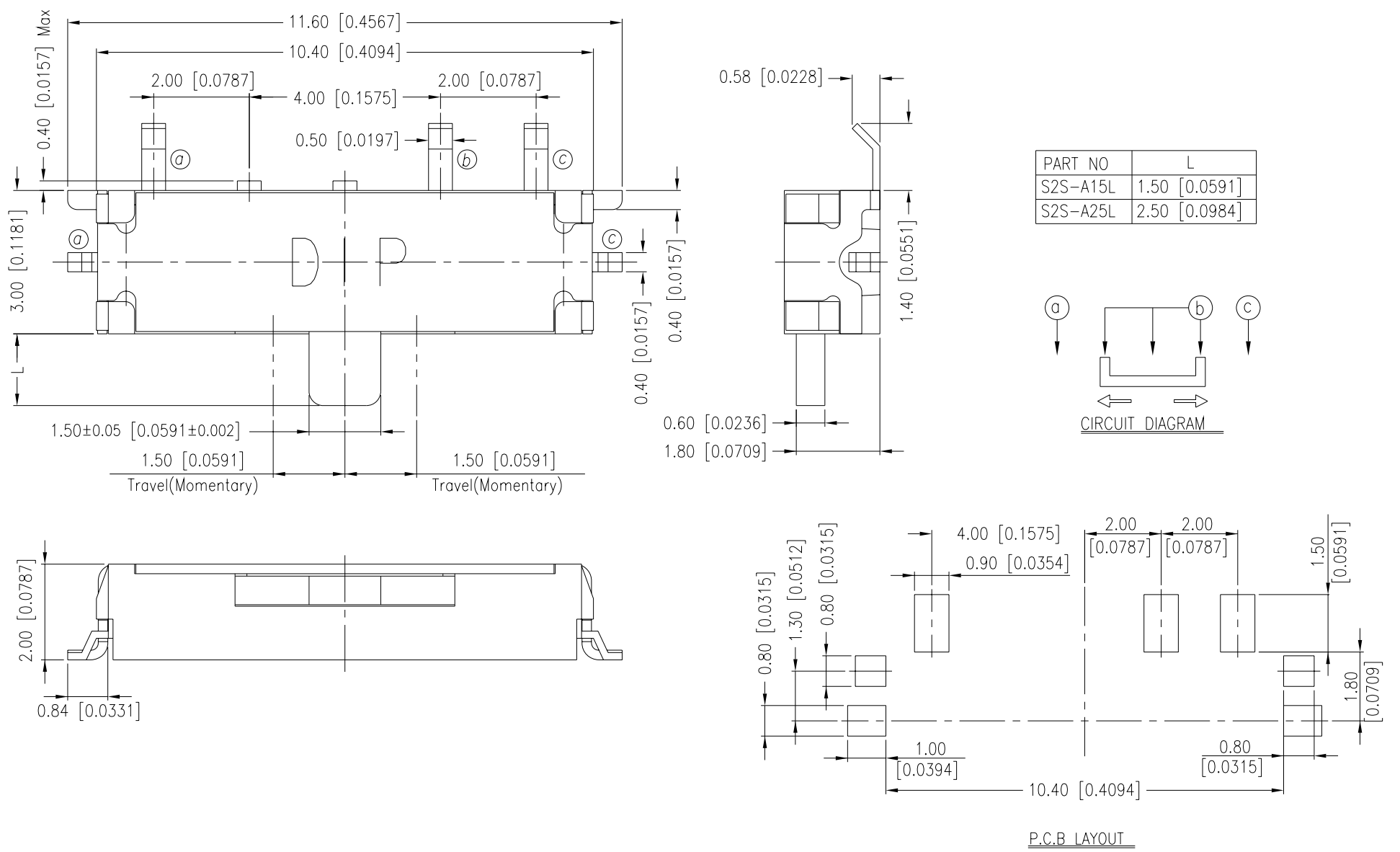


General Tolerance : $\pm 0.2\text{mm}$

S2S-AFC

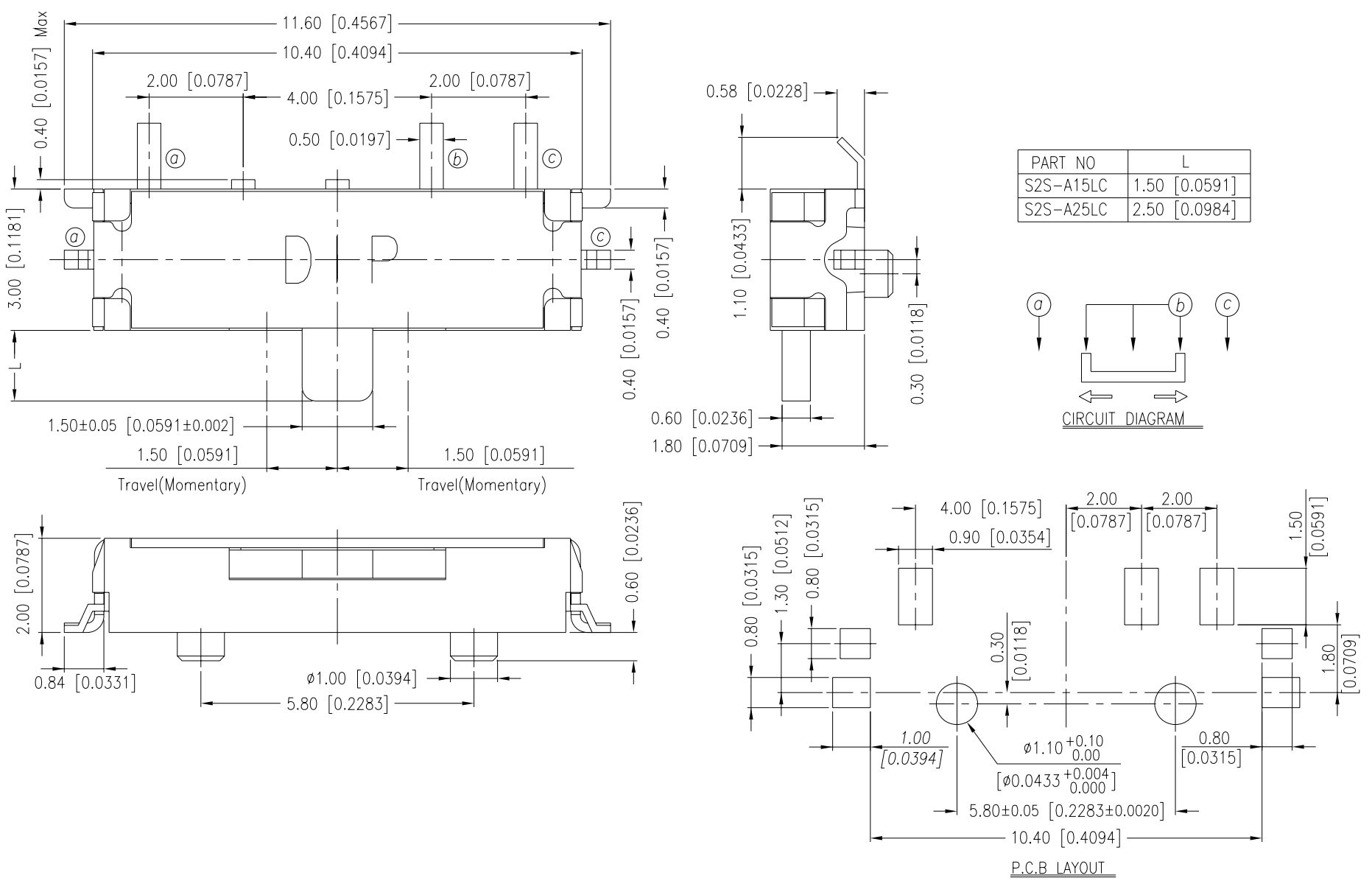
General Tolerance : $\pm 0.2\text{mm}$

S2S-AL



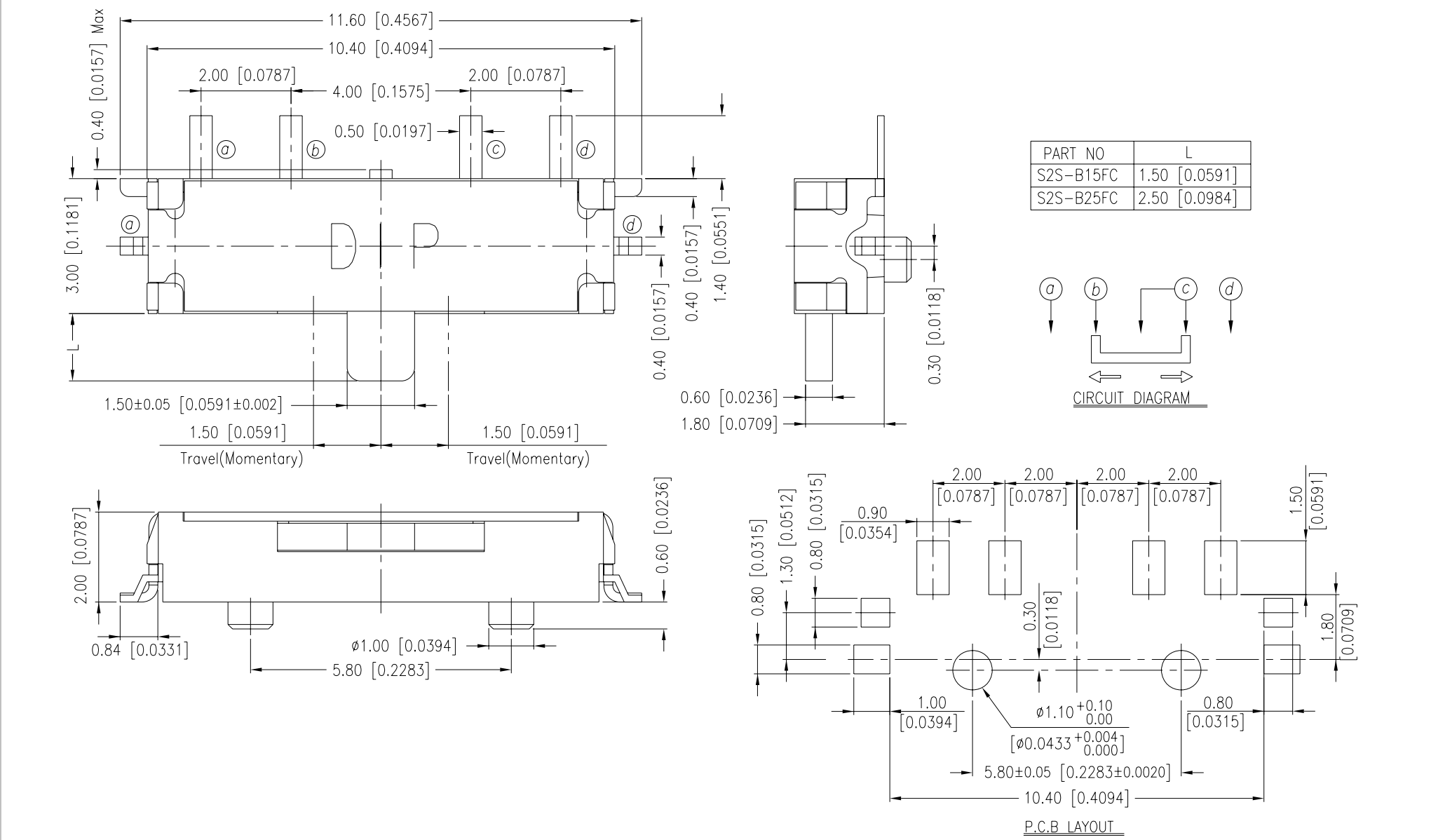
General Tolerance : $\pm 0.2\text{mm}$

S2S-ALC



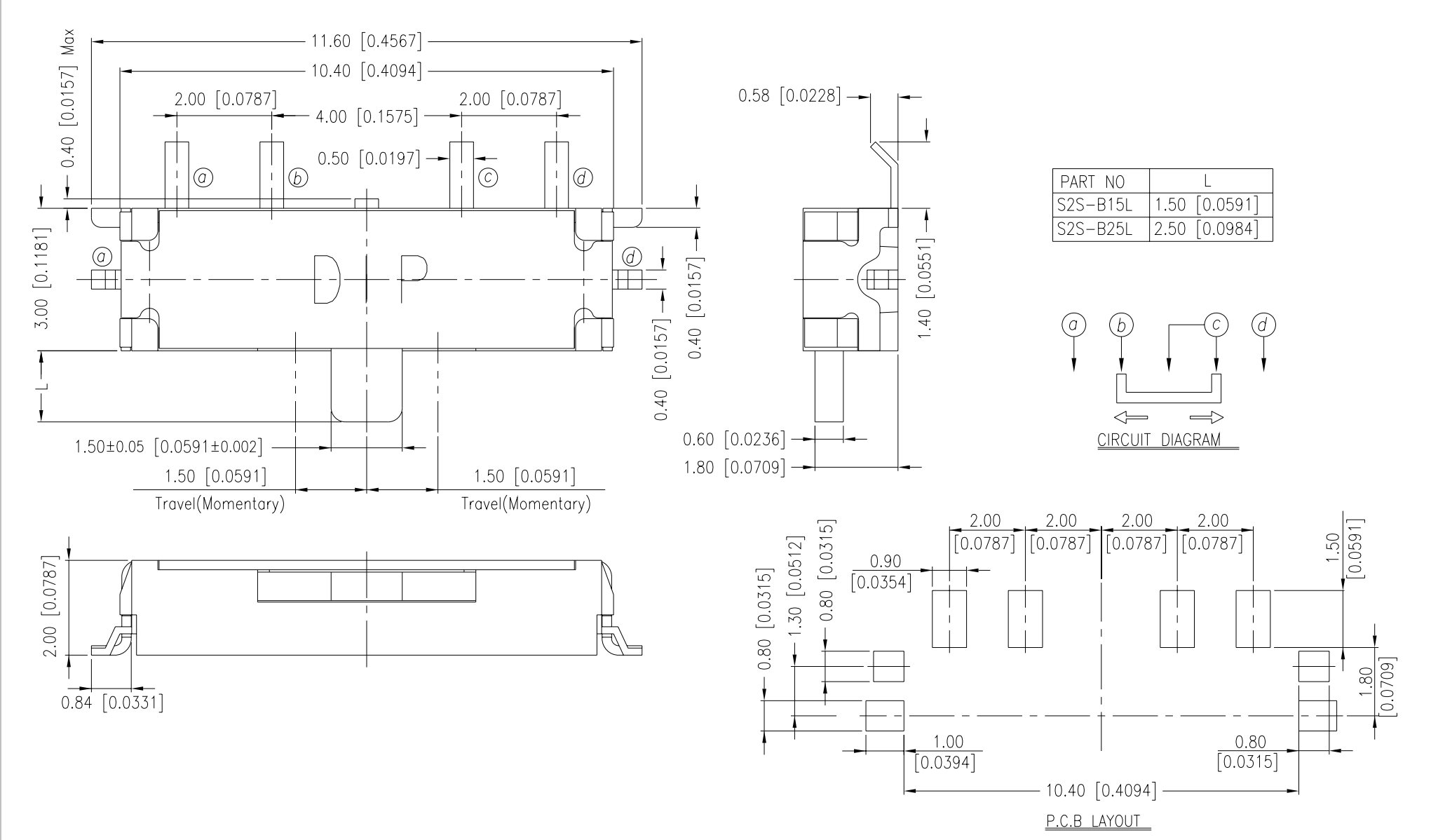
General Tolerance : $\pm 0.2\text{mm}$

S2S-BFC



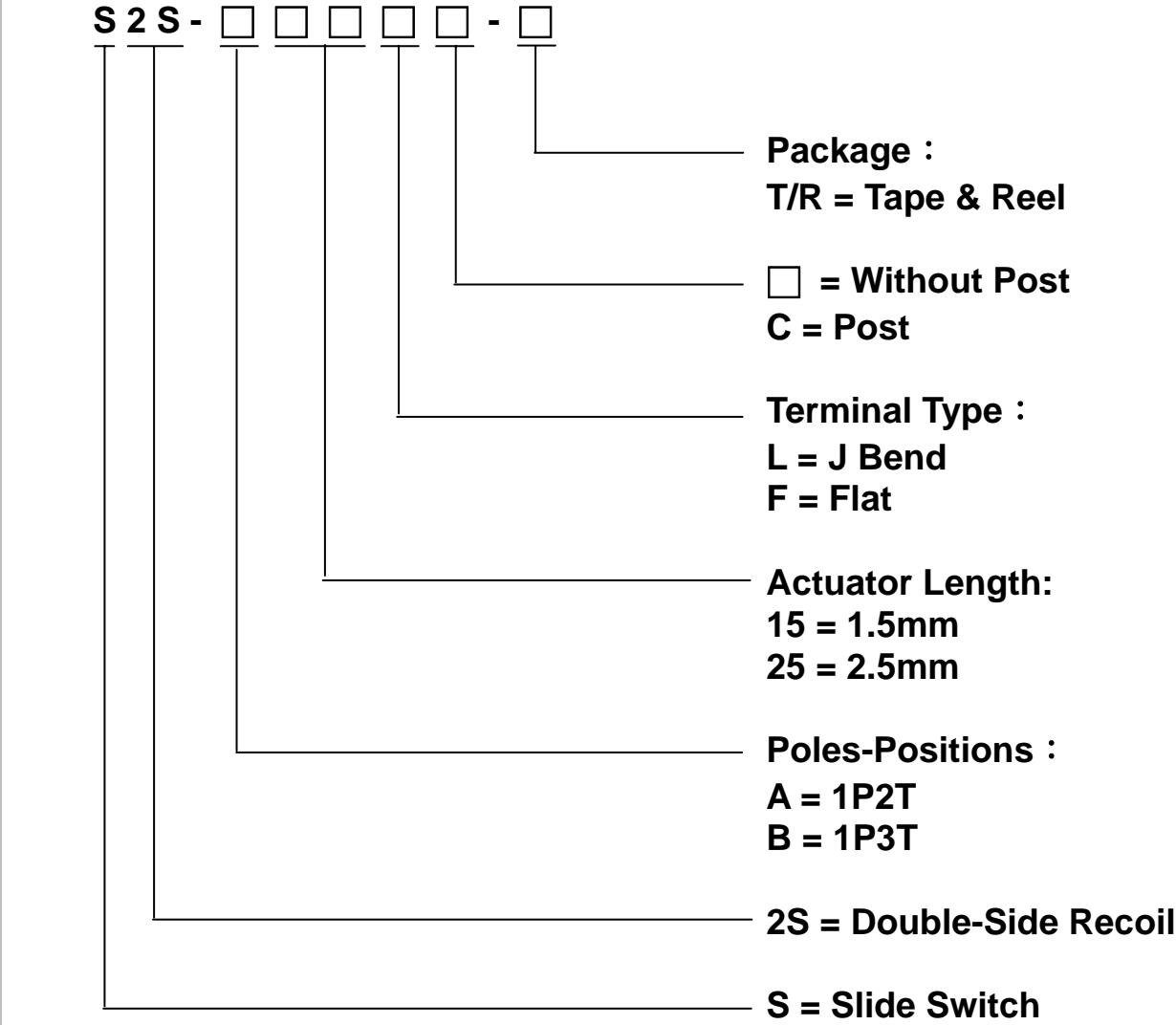
General Tolerance : $\pm 0.2\text{mm}$

S2S-BL



General Tolerance : $\pm 0.2\text{mm}$

HOW TO ORDER



SPECIFICATION

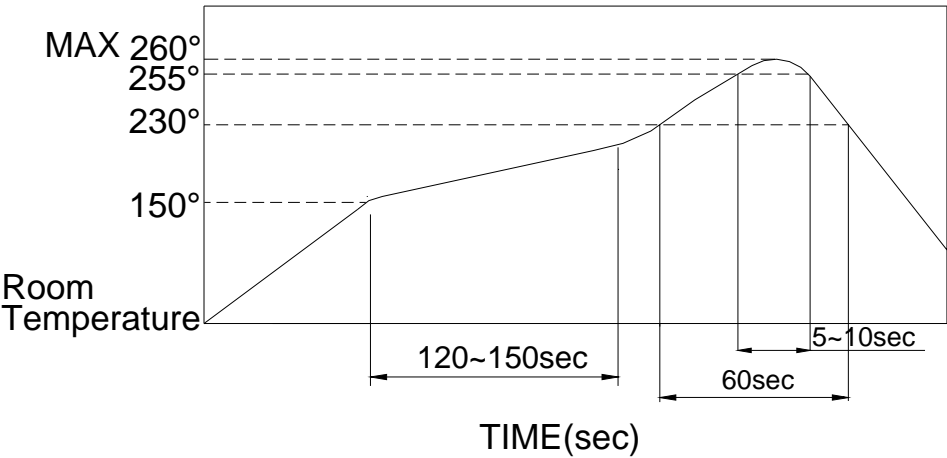
- △MECHANICAL
- Operation Force : 100±50gf
- Travel: 1.50±0.2mm
- Operation Temperature Range:-30℃ to +80℃
- Storage Temperature Range:-40℃ to +90℃
- △ELECTRICAL
- Electrical Life: 50,000 cycles
- Non Switching Rating : 0.2mA, 5V DC
- Switching Rating : 300mA, 4V DC
- Contact Resistance : 70mΩ max
- Insulation Resistance : 100MΩ min. at 250 VDC
- Dielectric Strength : 100 VAC/1 minute
- Circuit : 1P2T,1P3T

MATERIAL

- △COVER : Nickel Silver
- △CONTACT DISC : Alloy Copper, with gold cladding
- △TERMINAL : Phosphor Bronze, with silver cladding
- △BASE : UL94V-0 Nylon High-Temp Thermoplastic
Color : Black<1P2T>,Brown<1P3T>
- △STEM : UL94V-0 Nylon High-Temp Thermoplastic
Color : Black

SOLDERING PROCESS

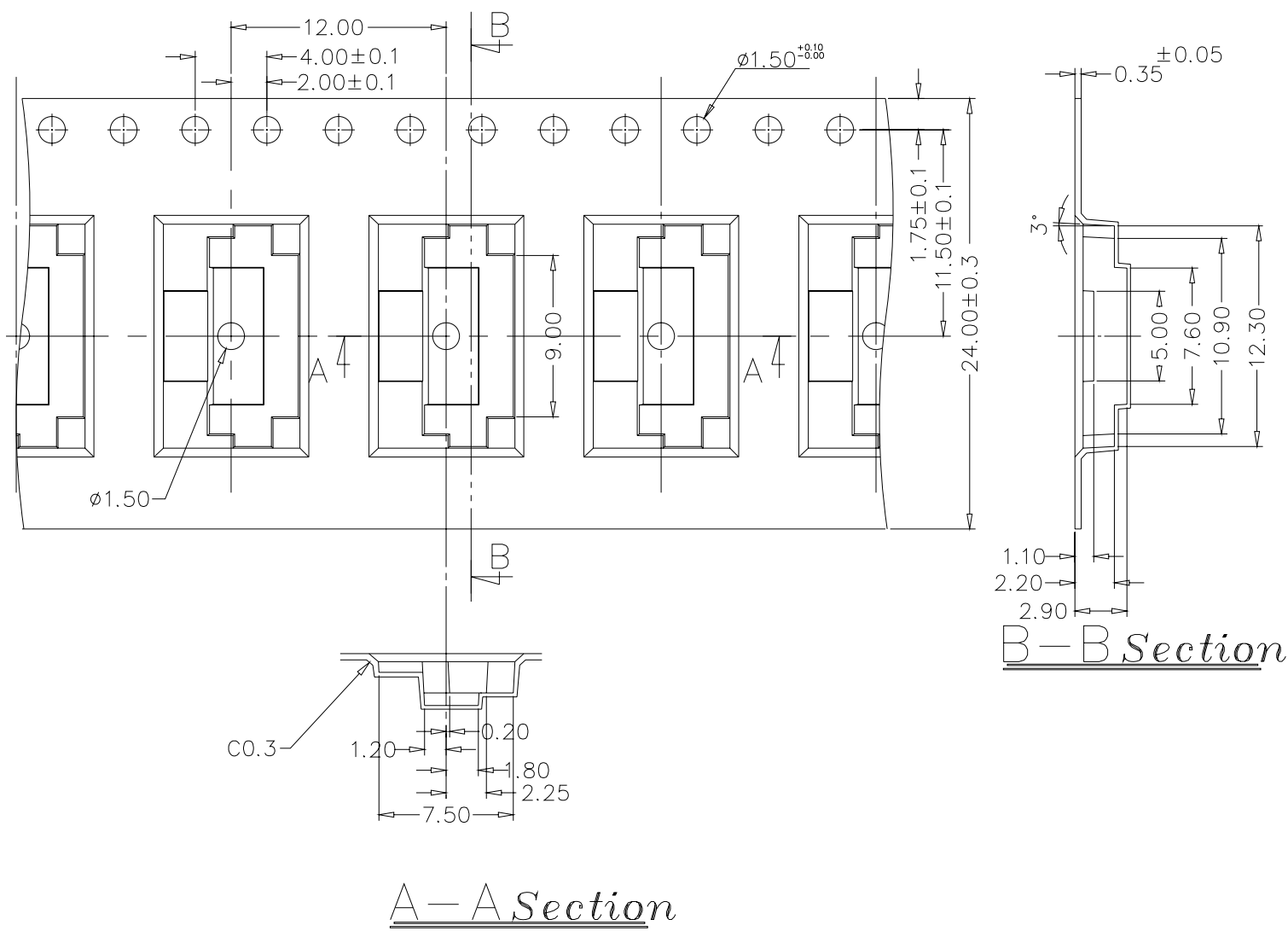
- △HAND SOLDERING : Use a soldering iron of 30 watts, △Temperature Profile :
controlled at 350℃ approximately 5 seconds while
Applying solder.
- △REFLOW SOLDERING: When applying reflow soldering,
the peak temperature or the reflow oven should be set
to 260℃ max.



PACKING

REEL

Part Number	Number Per Tube	Number Per Reel
S2S-15AF	-	2000
S2S-25AF	-	2000
S2S-15AFC	-	2000
S2S-25AFC	-	2000
S2S-15AL	-	2000
S2S-25AL	-	2000
S2S-15ALC	-	2000
S2S-25ALC	-	2000
S2S-15BF	-	2000
S2S-25BF	-	2000
S2S-15BFC	-	2000
S2S-25BFC	-	2000
S2S-15BL	-	2000
S2S-25BL	-	2000
S2S-15BLC	-	2000
S2S-25BLC	-	2000



General Tolerance : ±0.1mm