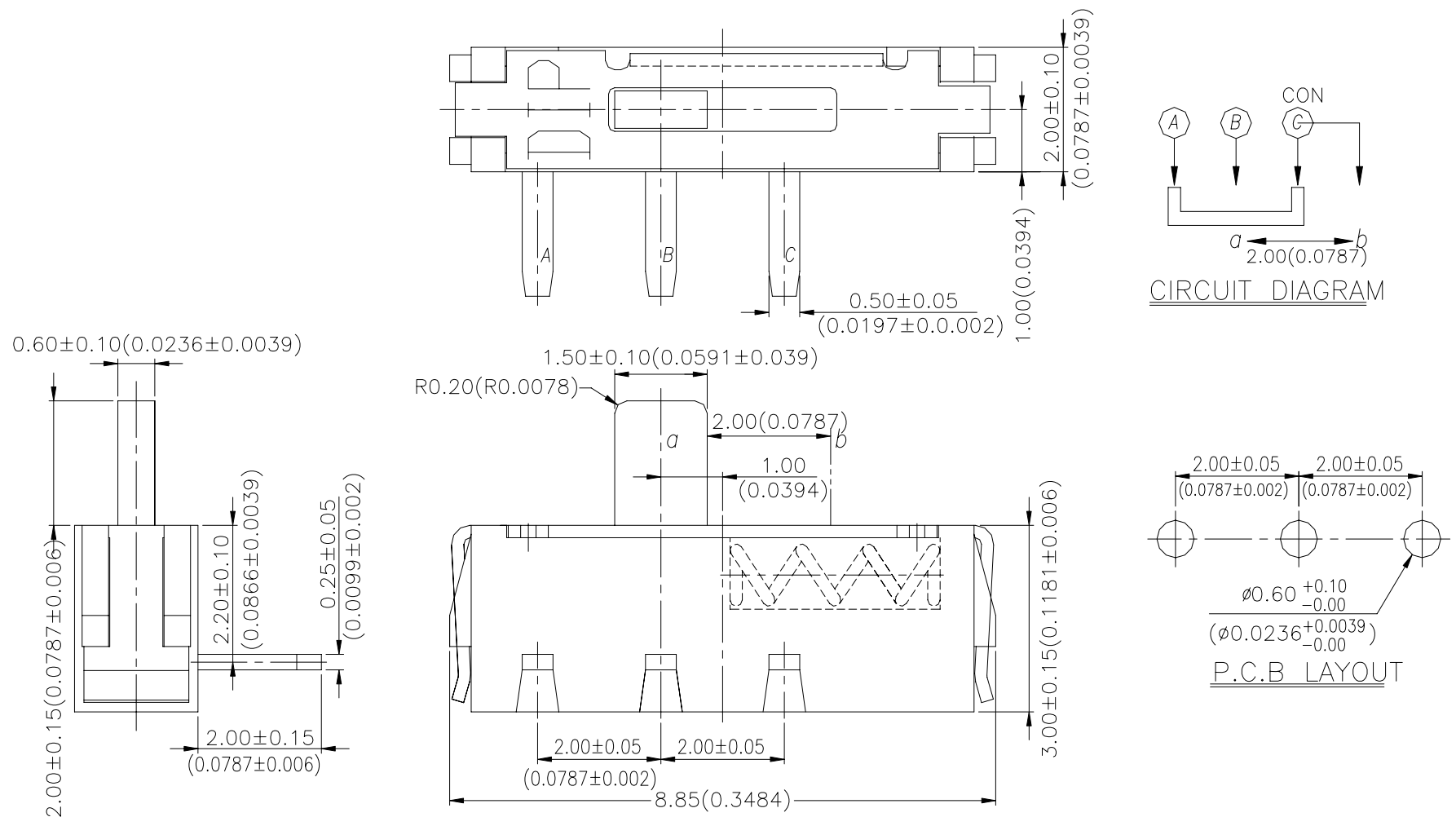
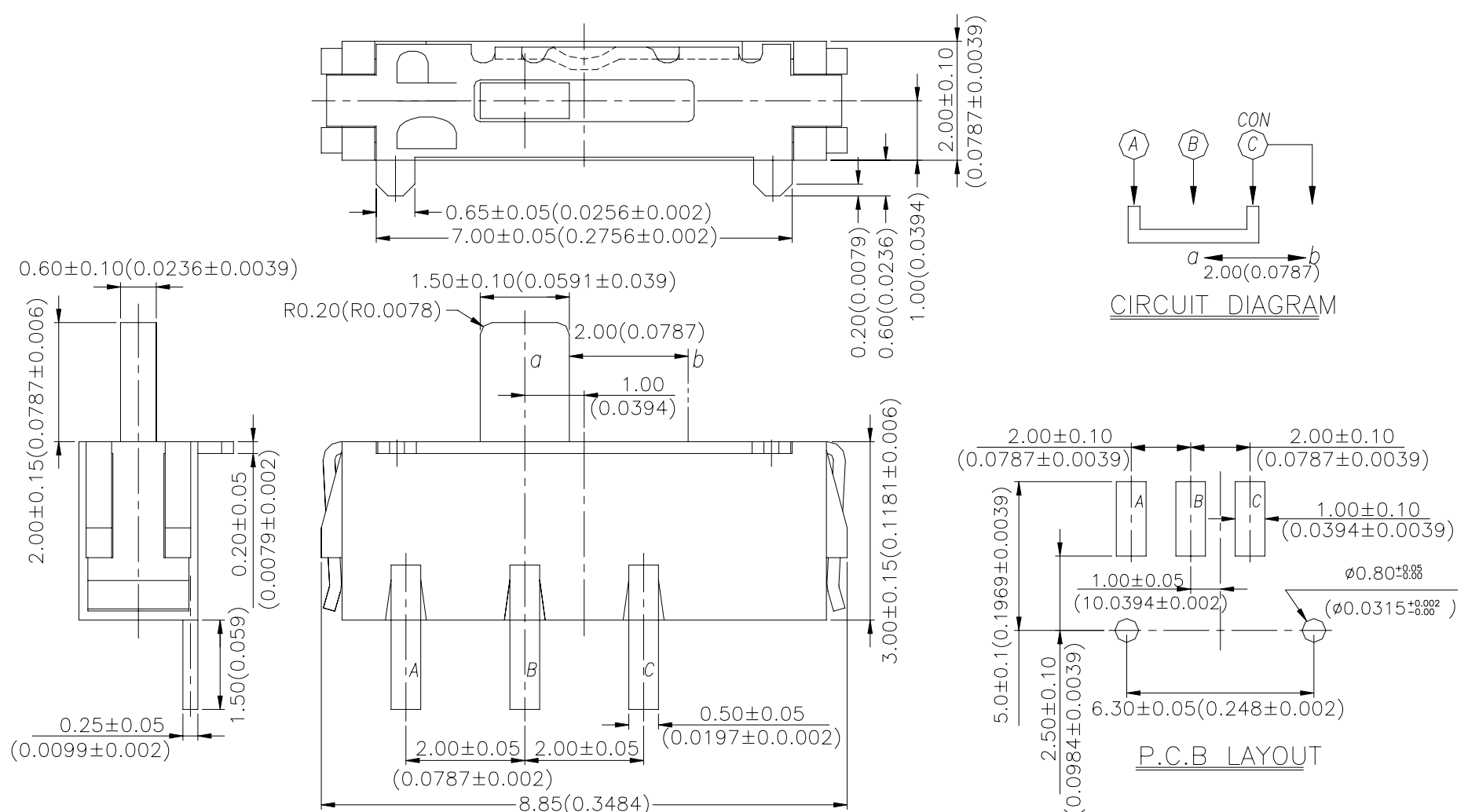


## DIMENSION

## SS3-HS

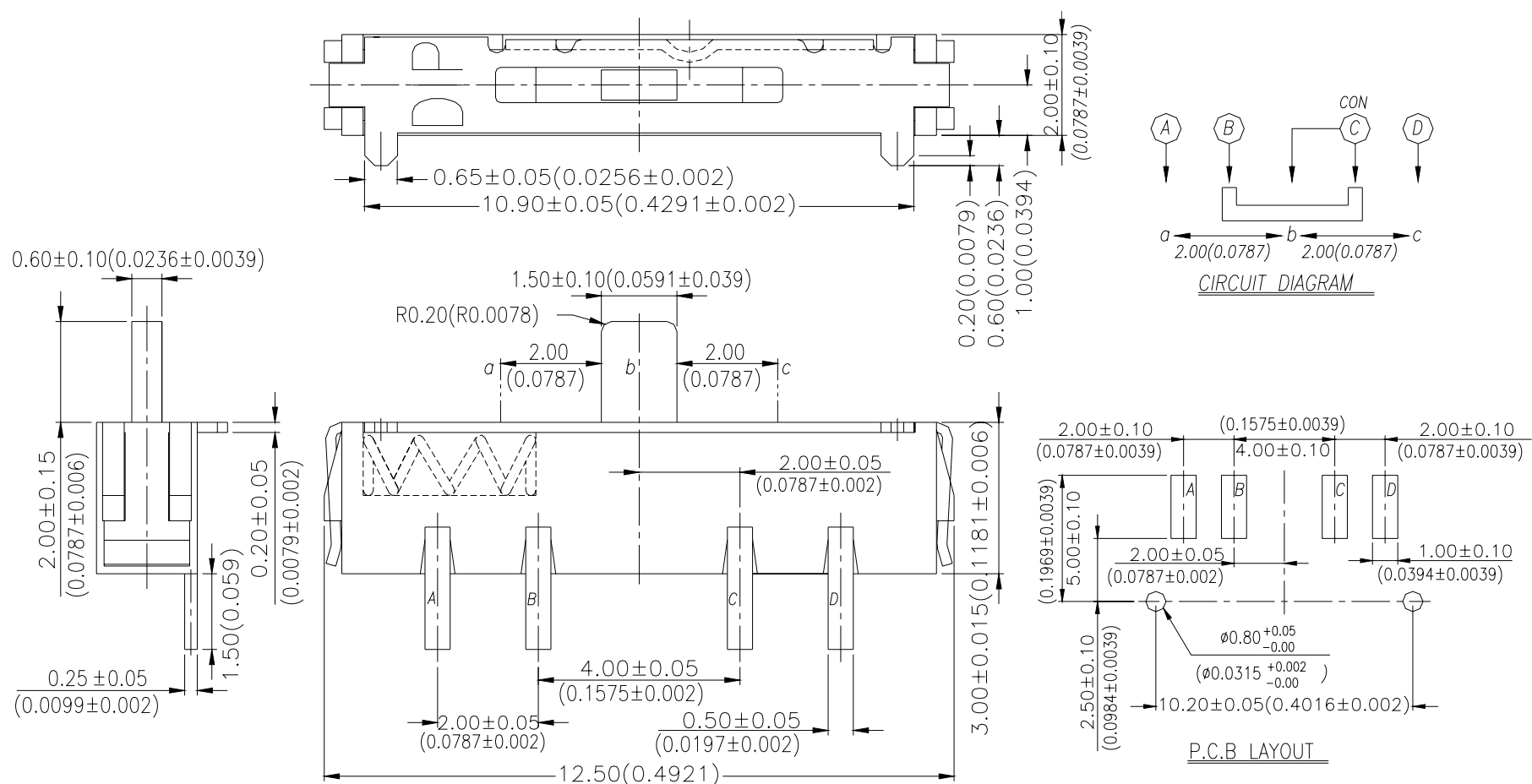


General Tolerance :  $\pm 0.2\text{mm}$

**SS3-CM**

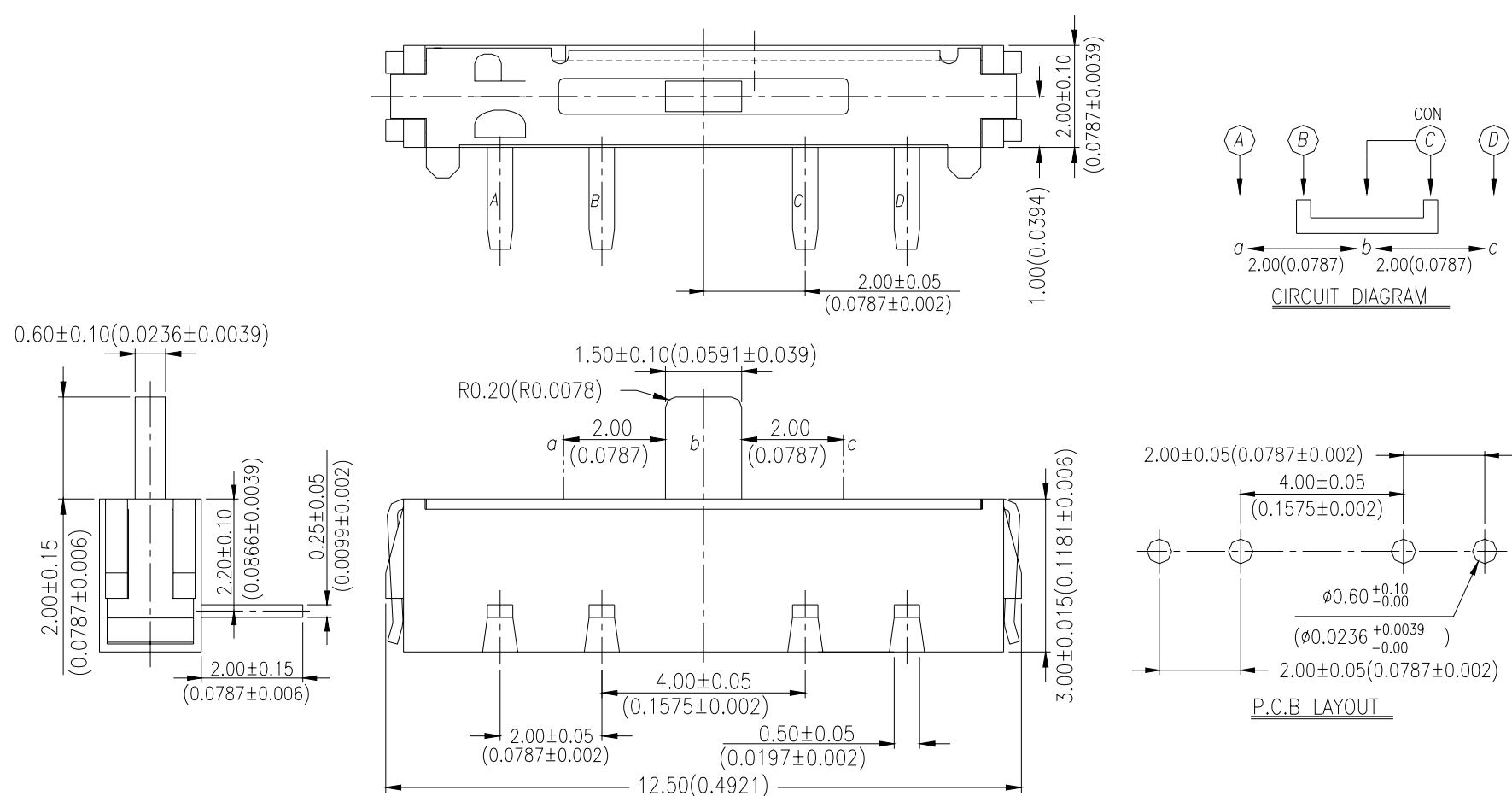
General Tolerance :  $\pm 0.2\text{mm}$

## SS4-CMS



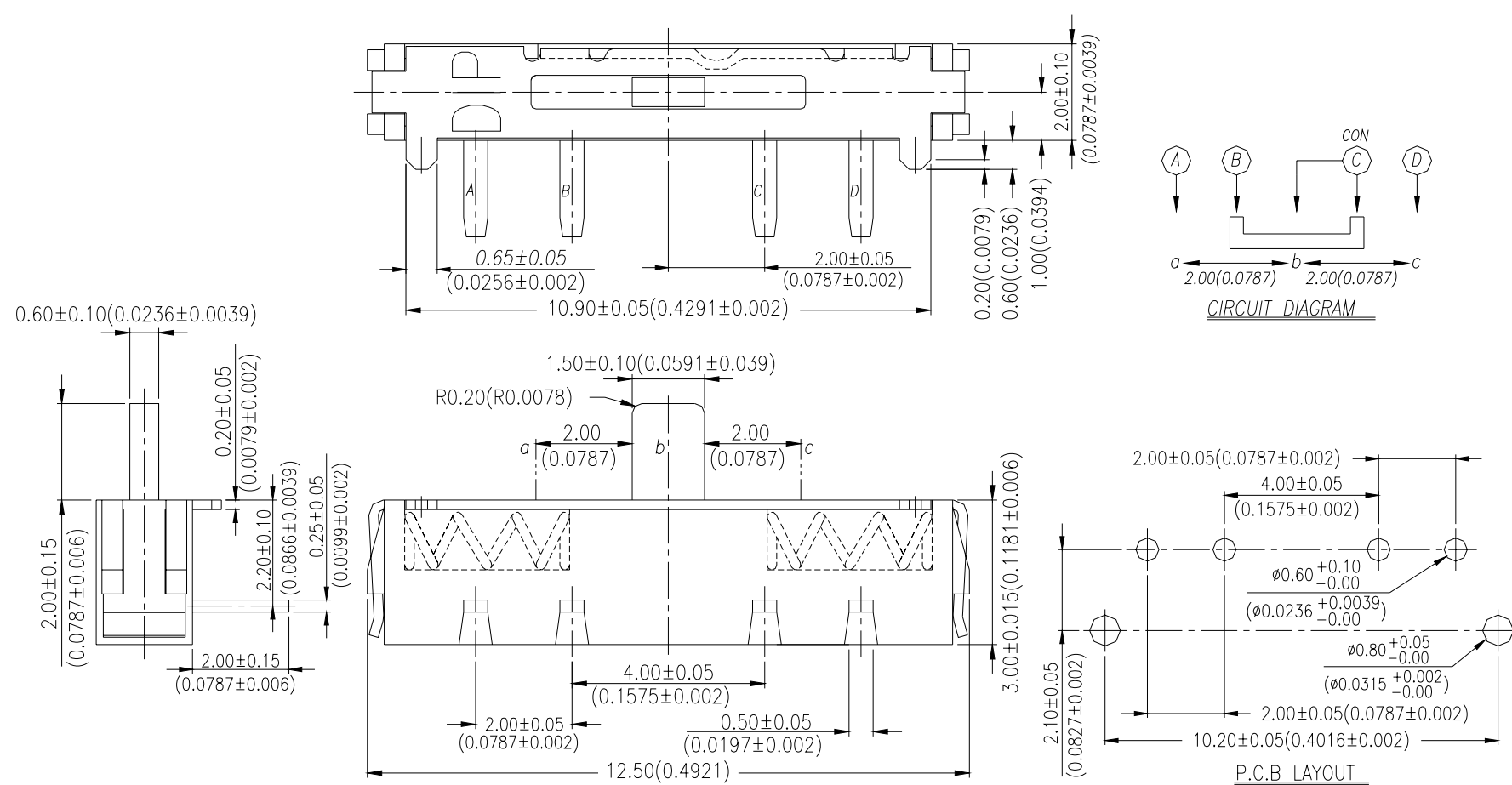
General Tolerance :  $\pm 0.2\text{mm}$

## SS4-H



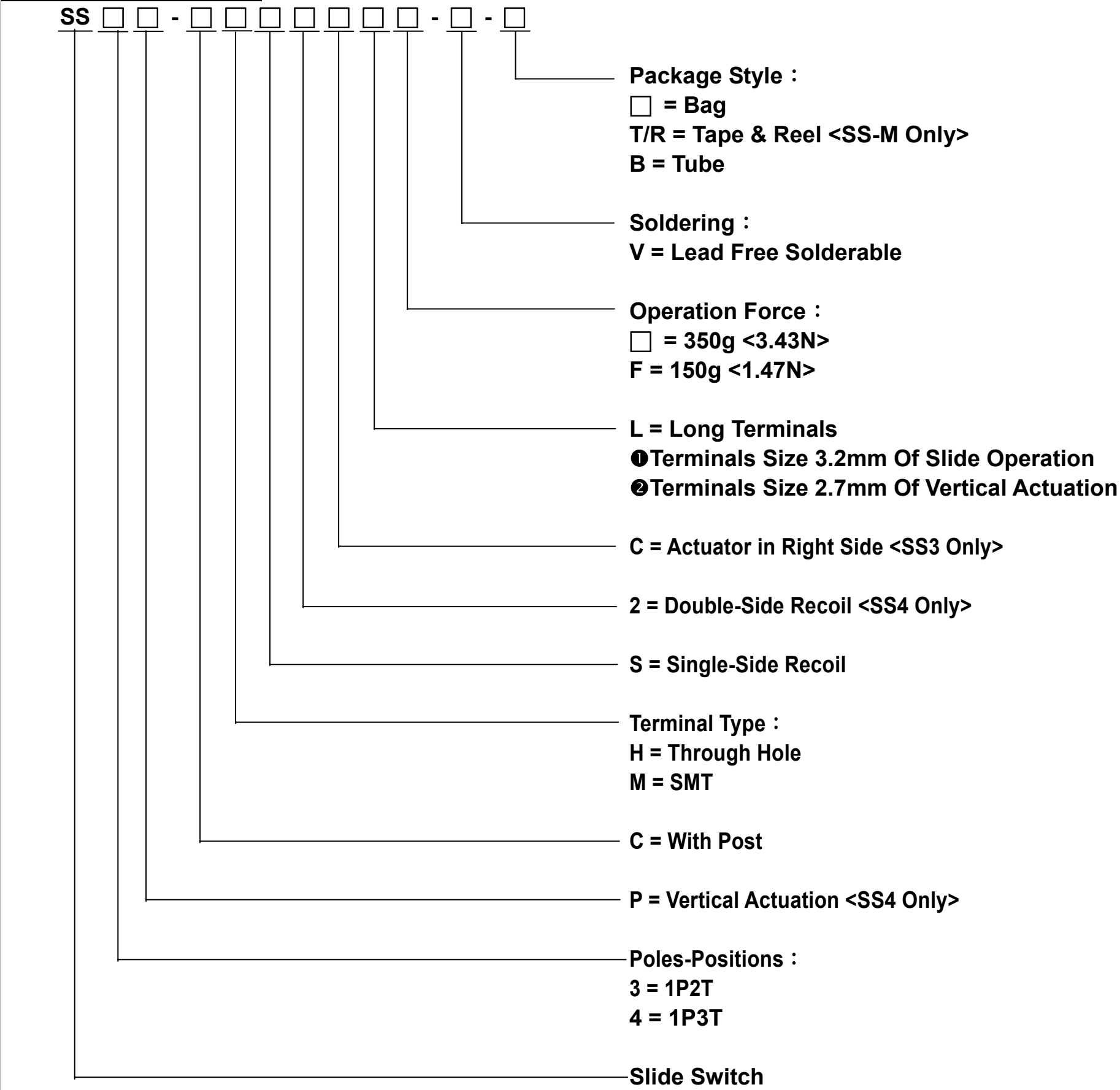
General Tolerance :  $\pm 0.2\text{mm}$

## SS4-CHS2



General Tolerance :  $\pm 0.2\text{mm}$

HOW TO ORDER



SPECIFICATION

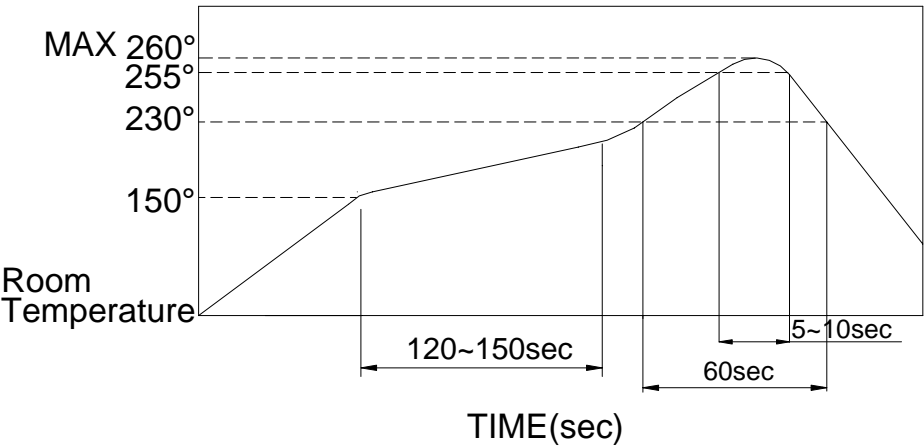
△MECHANICAL  
Mechanical Life: 10,000 cycles  
Operation Force: 350gf (Standard)  
150gf (lighter operating force)  
Operation Temp: -20℃ to +70℃  
Storage Temp: -40℃ to +85℃  
△ELECTRICAL  
Electrical Life: 10,000 cycles  
Non-switching Rating: 100mA, 50VDC  
Switching Rating: 25mA, 24 VDC  
Contact Resistance: 100mΩ max.  
Insulation Resistance: 100MΩ min. (500VDC)  
Dielectric Strength: 500VAC/ 1minute  
Circuit: 1P2T, 1P3T

MATERIAL

△COVER: Stainless steel  
△BASE: LCP High-Temp thermoplastic  
Color: Black  
△ACTUATOR: LCP thermoplastic  
Color: Black  
△CONTACT: Alloy copper  
△TERMINAL: Brass C2680-H

SOLDERING PROCESS

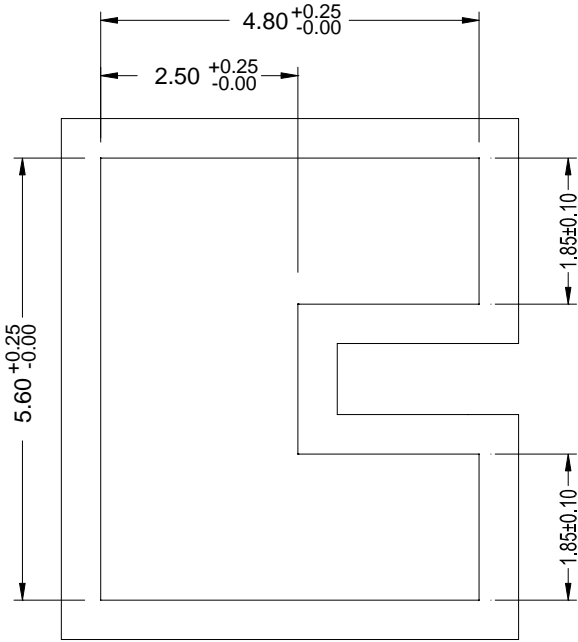
- △ HAND SOLDERING : Use a soldering iron of 30 watts, controlled at 350℃ approximately 5 seconds while applying.
- △ WAVE SOLDERING : Recommended solder temperature at 500°F(260℃)max. 5 seconds for through Hole type.
- △ REFLOW SOLDERING : When applying reflow soldering, the peak temperature or the reflow oven should be set to 260℃ max.
- △ Temperature Profile :



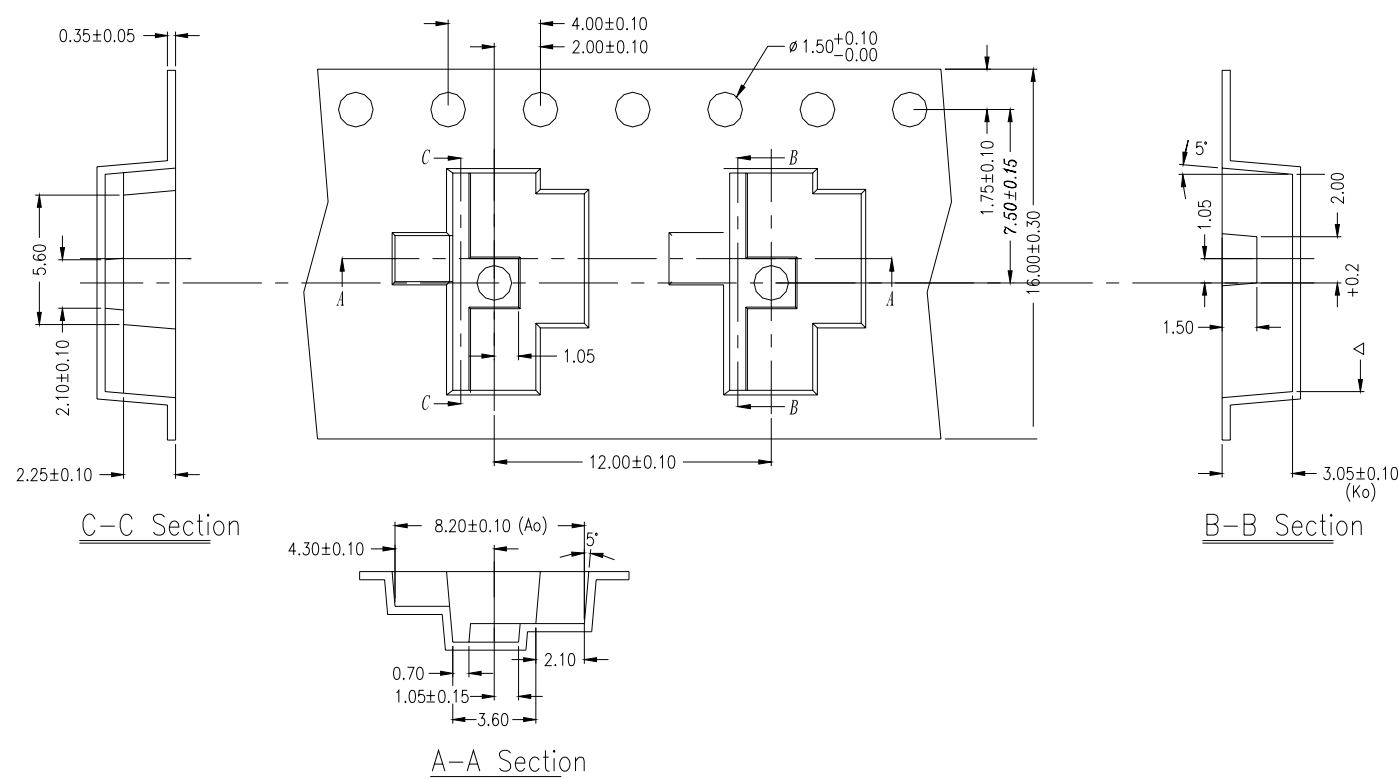
PACKING

Part Number	Number Per Reel	Number Per Tube
SS3-H-B		53
SS3-HS-B		53
SS3-HSC-B		53
SS4-H-B		38
SS4-HS-B		38
SS4-HS2-B		38
SS3-CM-T/R	1900	
SS3-CMS-T/R	1900	
SS3-M-T/R	1900	
SS4-CM-T/R	1900	
SS4-CMS-T/R	1900	
SS4-CMS2-T/R	1900	
SS4-M-T/R	1900	
SS4-MS-T/R	1900	
SS4-CMS2-T/R	1900	
SS3-CMSC-T/R	1900	
SS3-MSC-T/R	1900	

SS4 、 3 TUBE

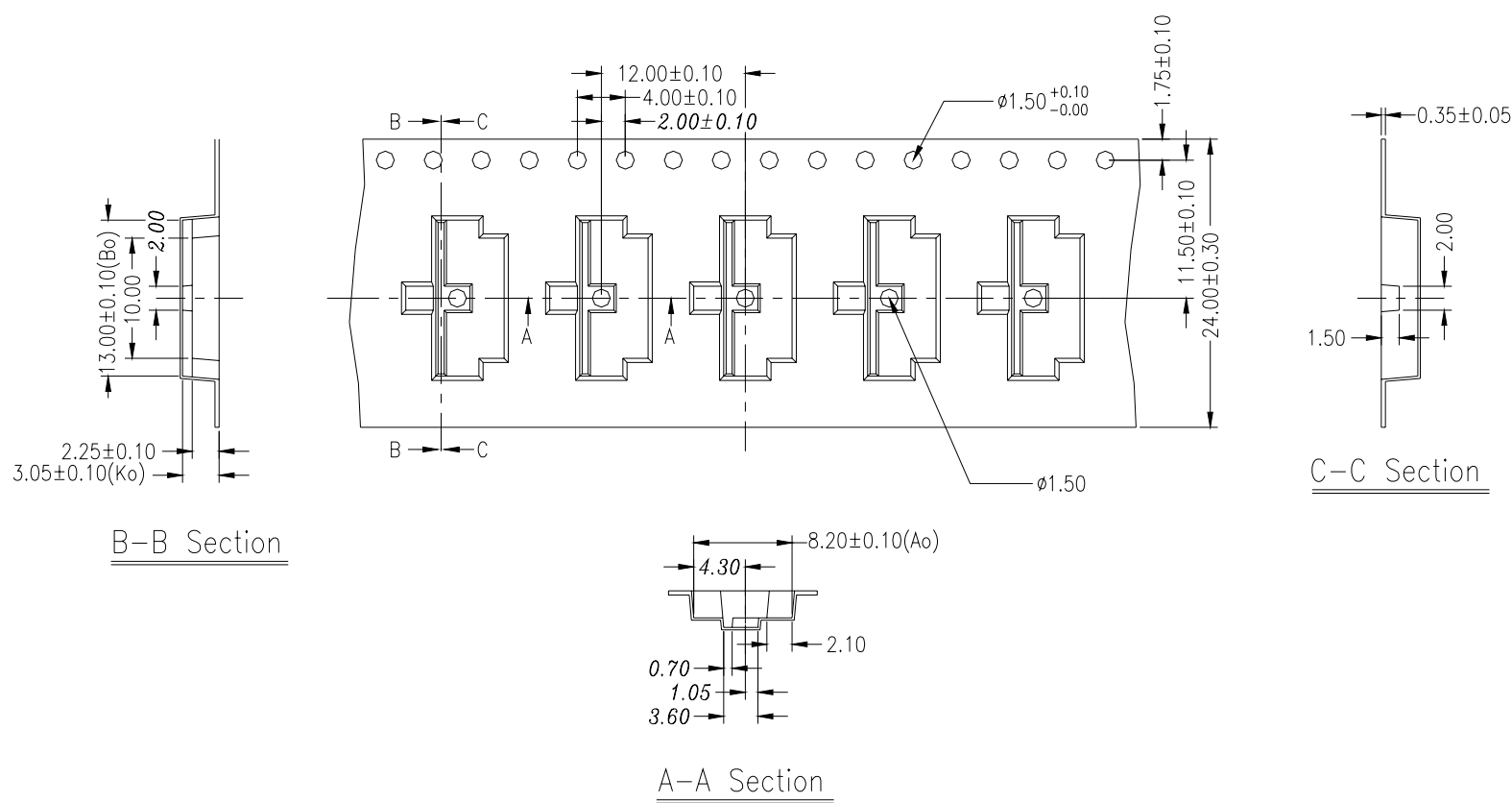


SS3 REEL



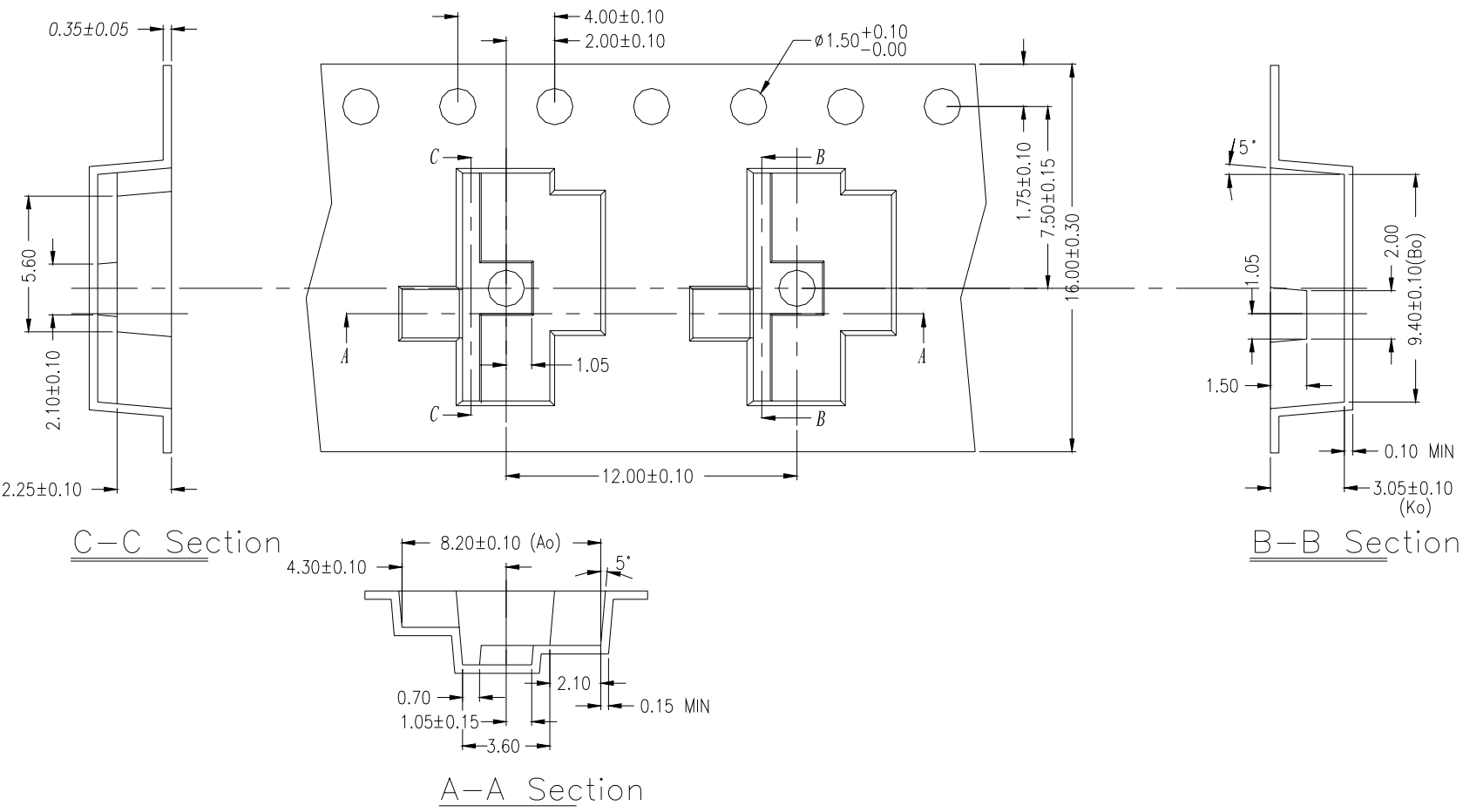
General Tolerance : ±0.1mm

SS4 REEL



General Tolerance : ±0.1mm

SSC-M REEL



General Tolerance :  $\pm 0.1\text{mm}$