



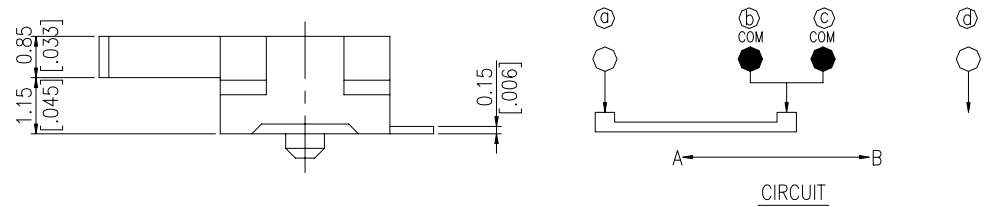
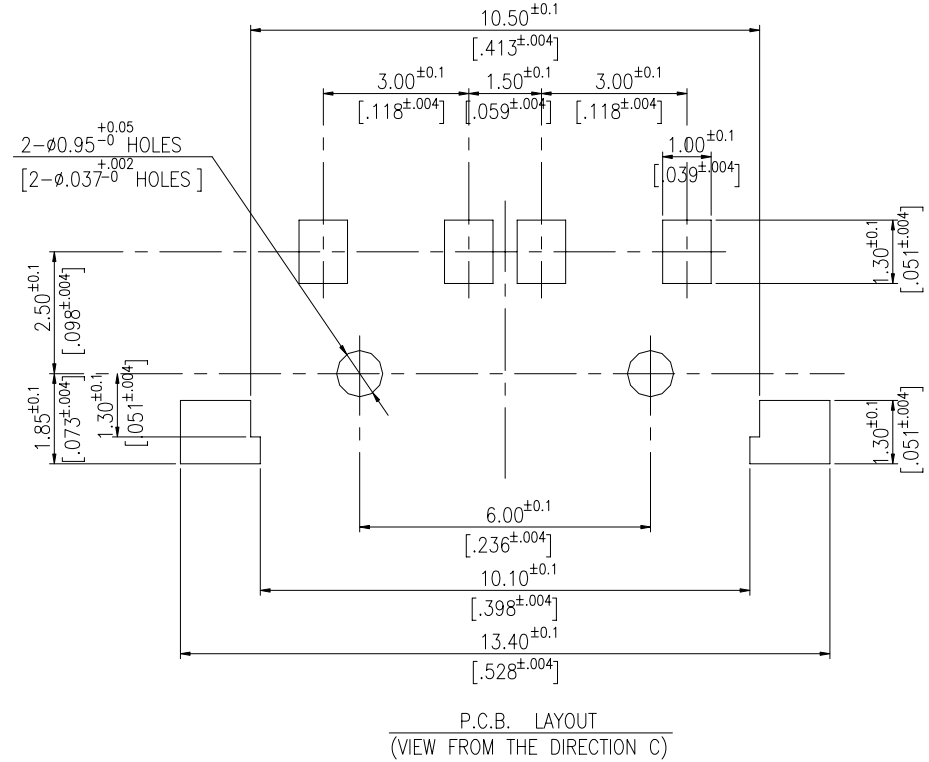
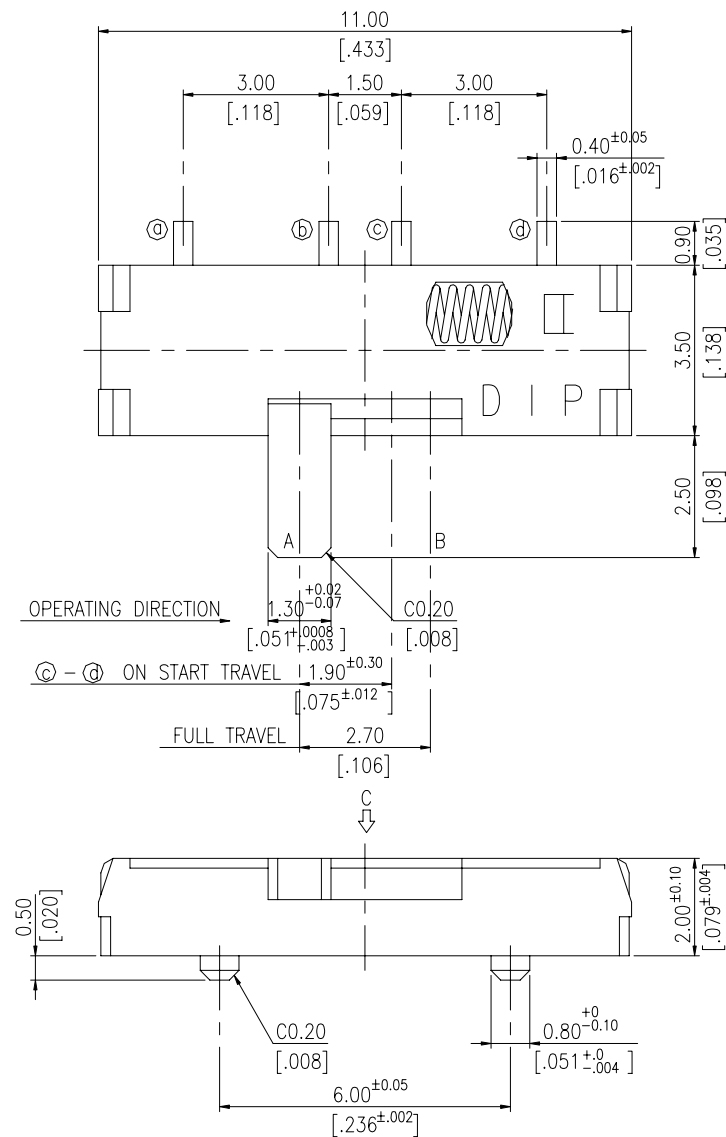
DIPTRONICS MANUFACTURING INC.

SSS SERIES



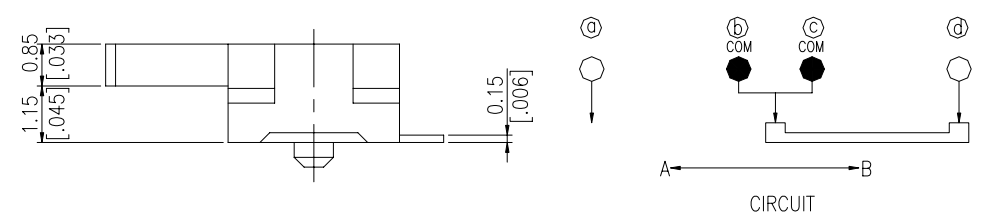
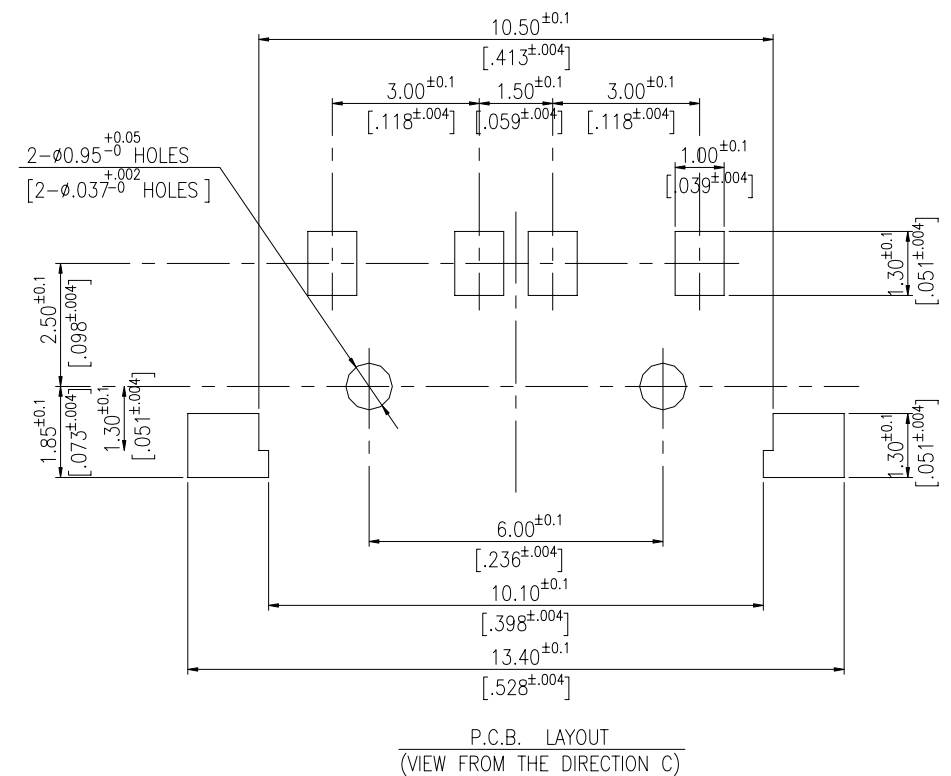
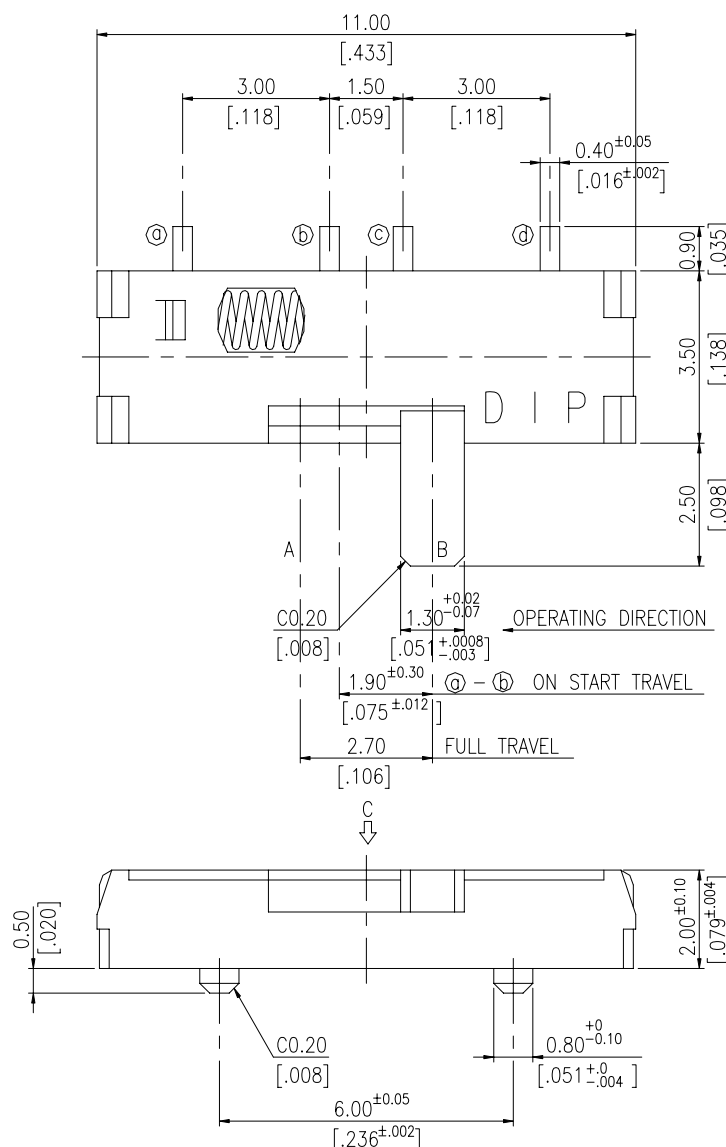
DIMENSION

SSS12L



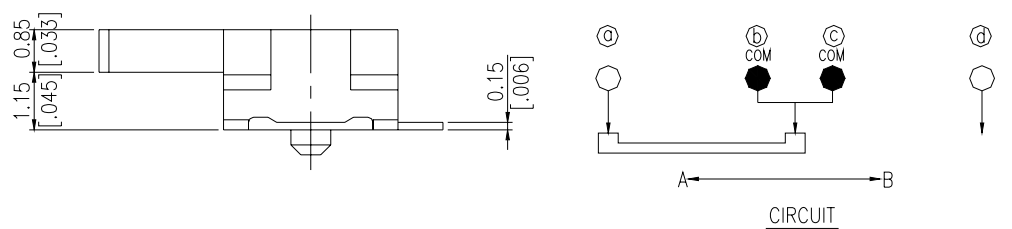
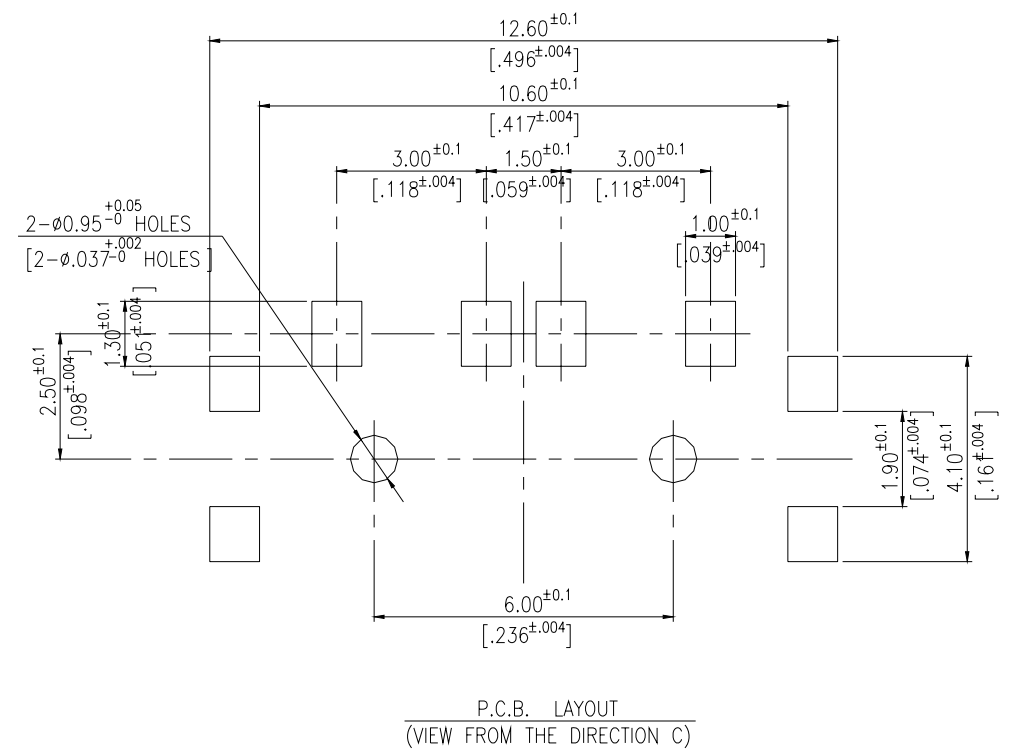
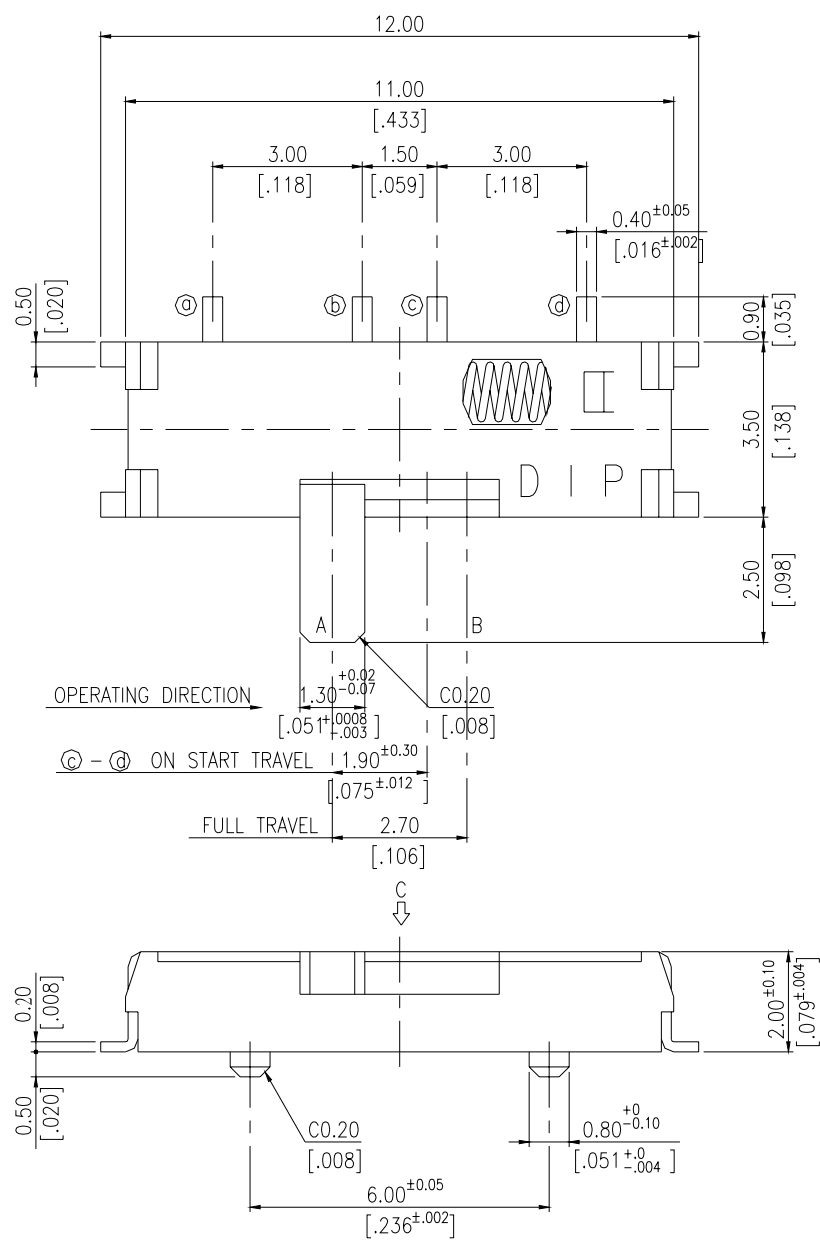
General Tolerance : $\pm 0.2\text{mm}$

SSS12R



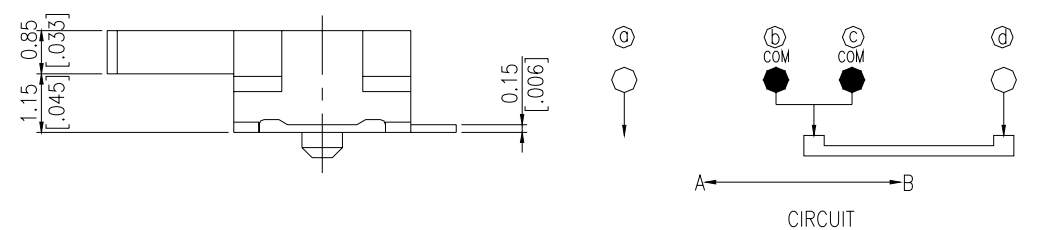
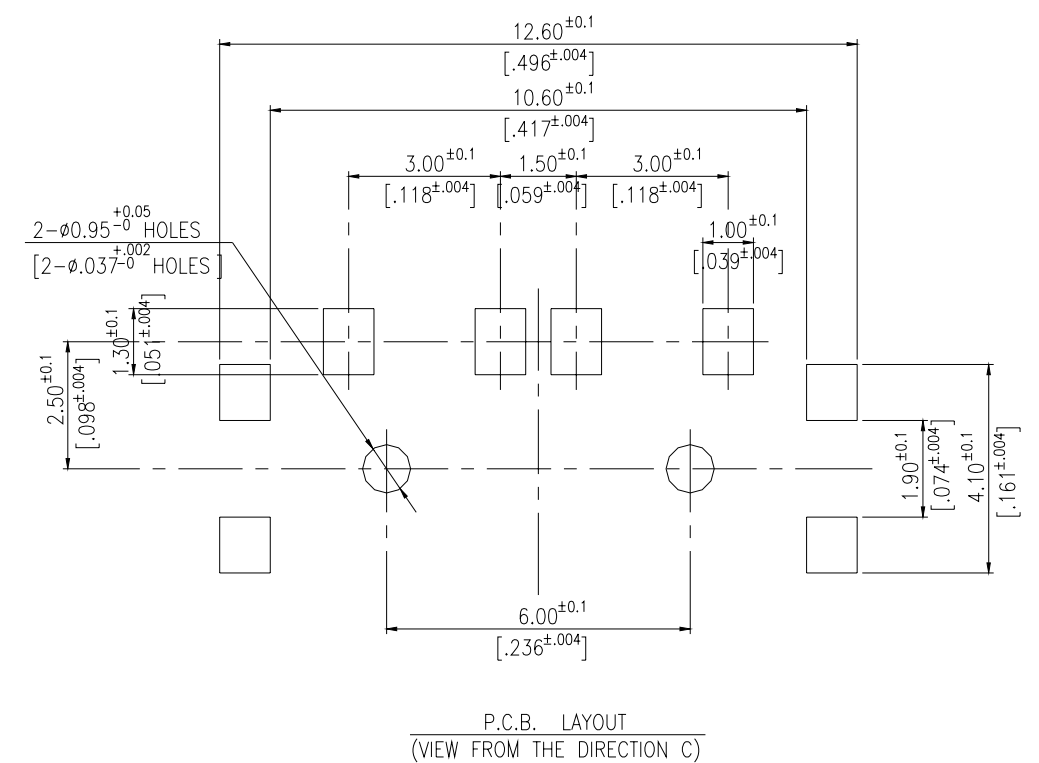
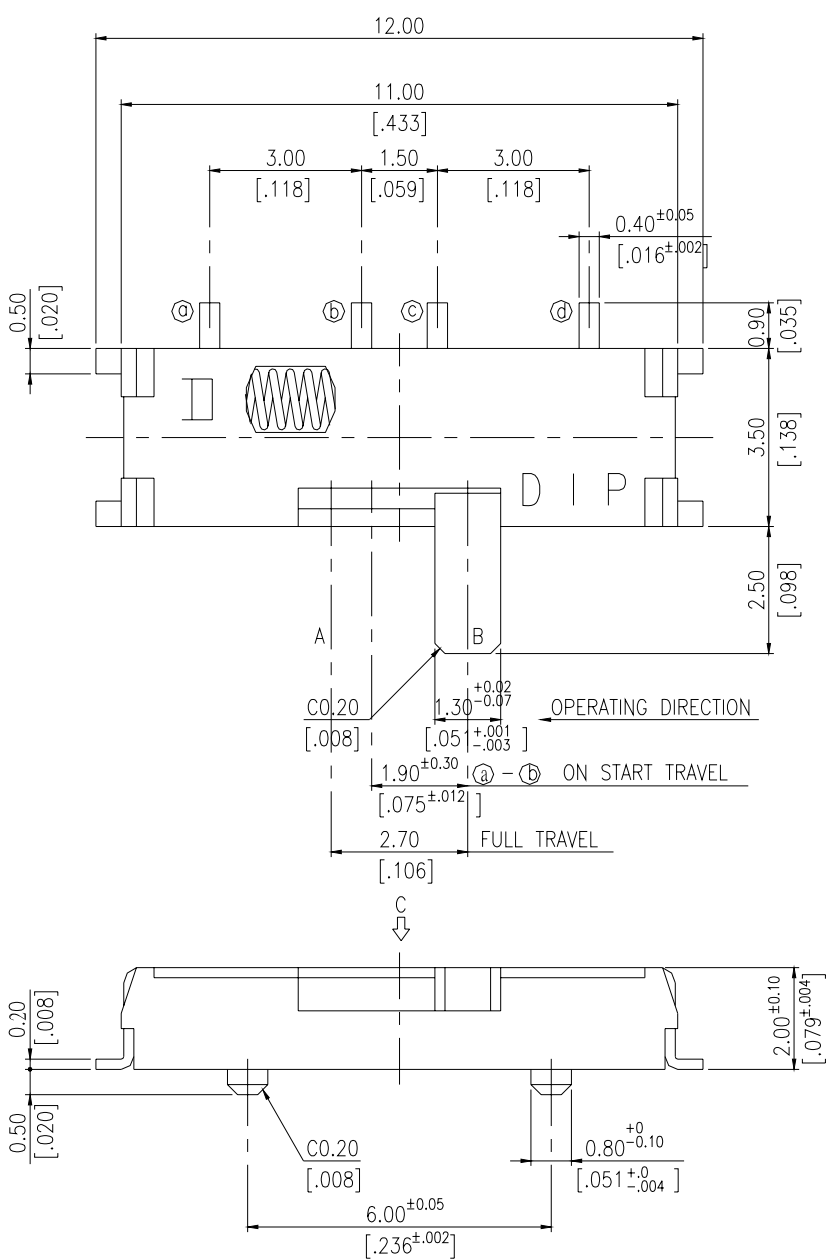
General Tolerance : $\pm 0.2\text{mm}$

SSS12LG



General Tolerance : $\pm 0.2\text{mm}$

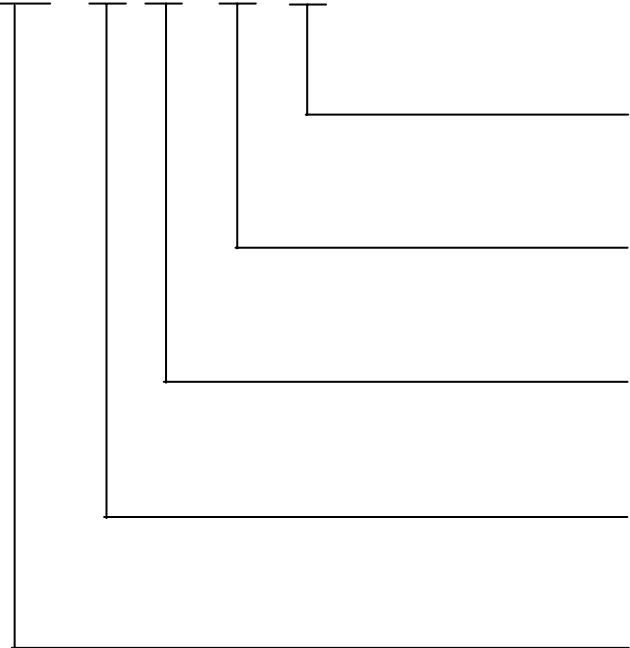
SSS12RG



General Tolerance : $\pm 0.2\text{mm}$

HOW TO ORDER

SSS - 12 □ - V - □



Package :
T/R = Tape & Reel

Soldering :
V = Lead Free Solderable

L = Actuator in Left Side
R = Actuator in Right Side

Poles-Positions
12 = 1P2T

Spring Return Slide Switch

SPECIFICATION

- △MECHANICAL
- Operation Force : 180±70gf
 - Operation Temperature Range : -10℃ to +60℃
 - Storage Temperature Range : -20℃ to +75℃
- △ELECTRICAL
- Electrical Life : 10,000 cycles
 - Rating : 25mA, 24V DC
 - Contact Resistance : 70mΩ max.
 - Insulation Resistance : 100MΩ min. at 100V DC
 - Dielectric Strength : 100V AC/1 minute
 - Circuit : 1P2T

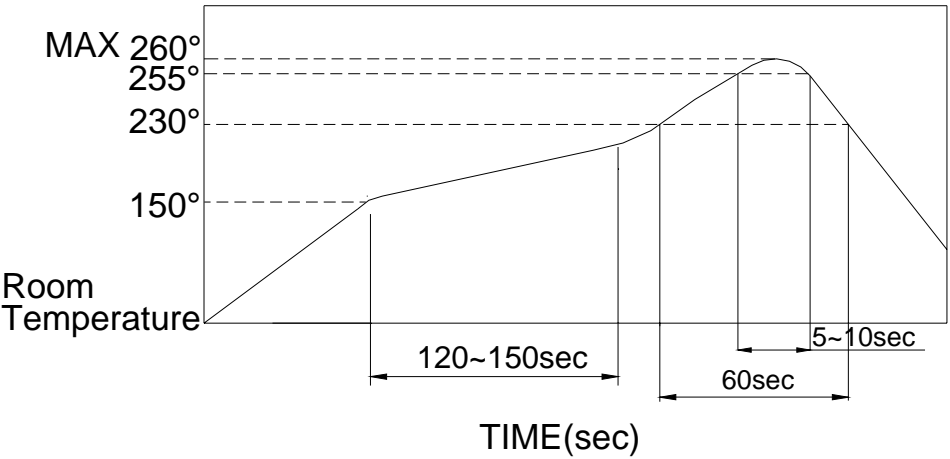
MATERIAL

- △STEM : Nylon UL94V-0 High-Temp Thermoplastic
Color : Black
- △COVER : Nickel silver
- △SPRING : Stainless silver
- △CONTACT : Alloy Copper, Gold Plated
- △BASE : LCP High-Temp Thermoplastic
Color : Black
- △TERMINAL : Phosphor Bronze, with Silver plated

SOLDERING PROCESS

- △HAND SOLDERING : Use a soldering iron of 30 watts,
Controlled at 350℃ approximately 5 seconds while
applying solder.
- △REFLOW SOLDERING : When applying reflow soldering,
the peak temperature or the reflow oven should be set
to 260℃ max.

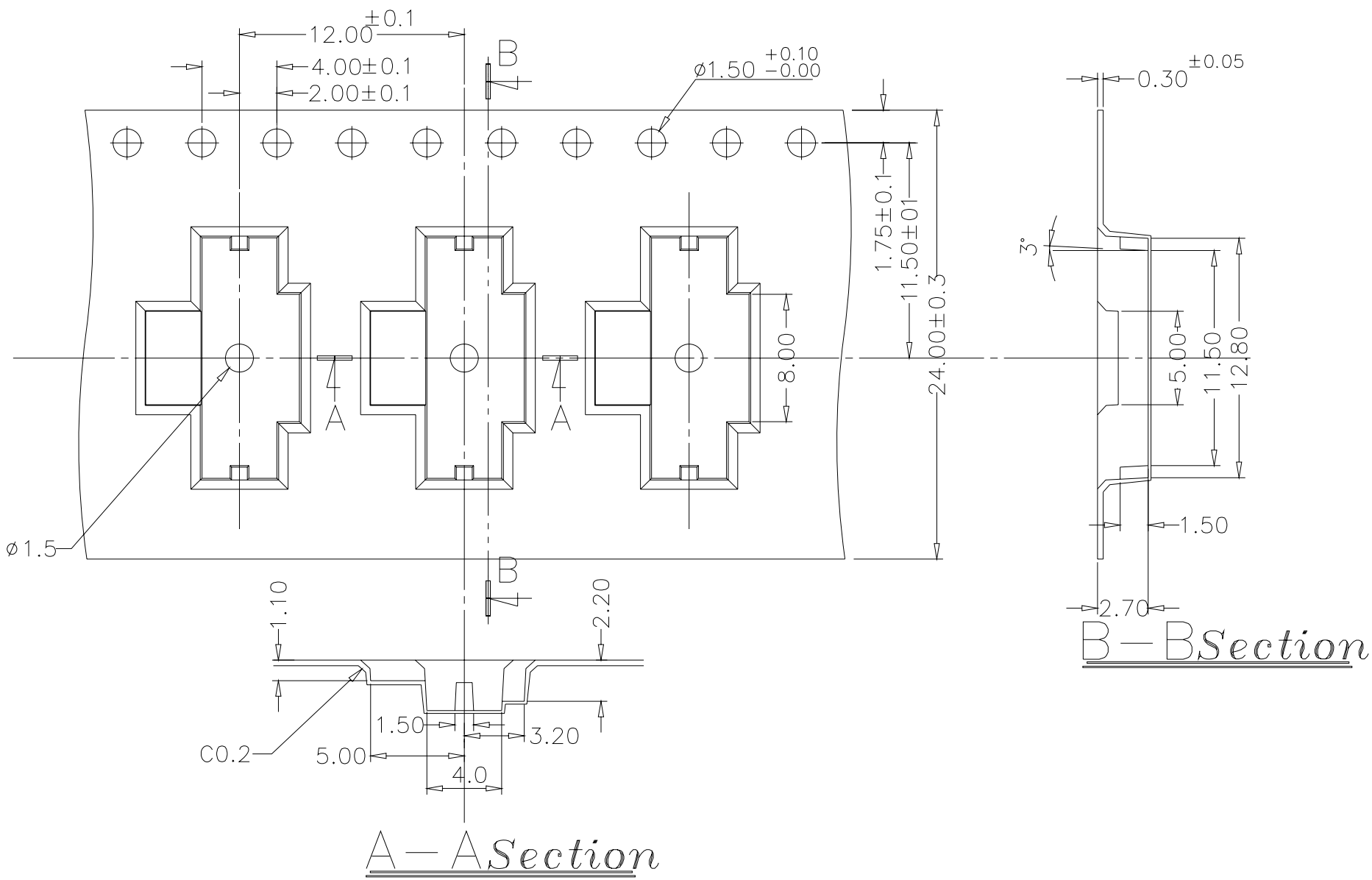
△Temperature Profile :



PACKING

REEL

Part Number	Number Per Tube	Number Per Reel
SSS-12R(G)	-	2000
SSS-12L(G)	-	2000



General Tolerance : $\pm 0.1\text{mm}$