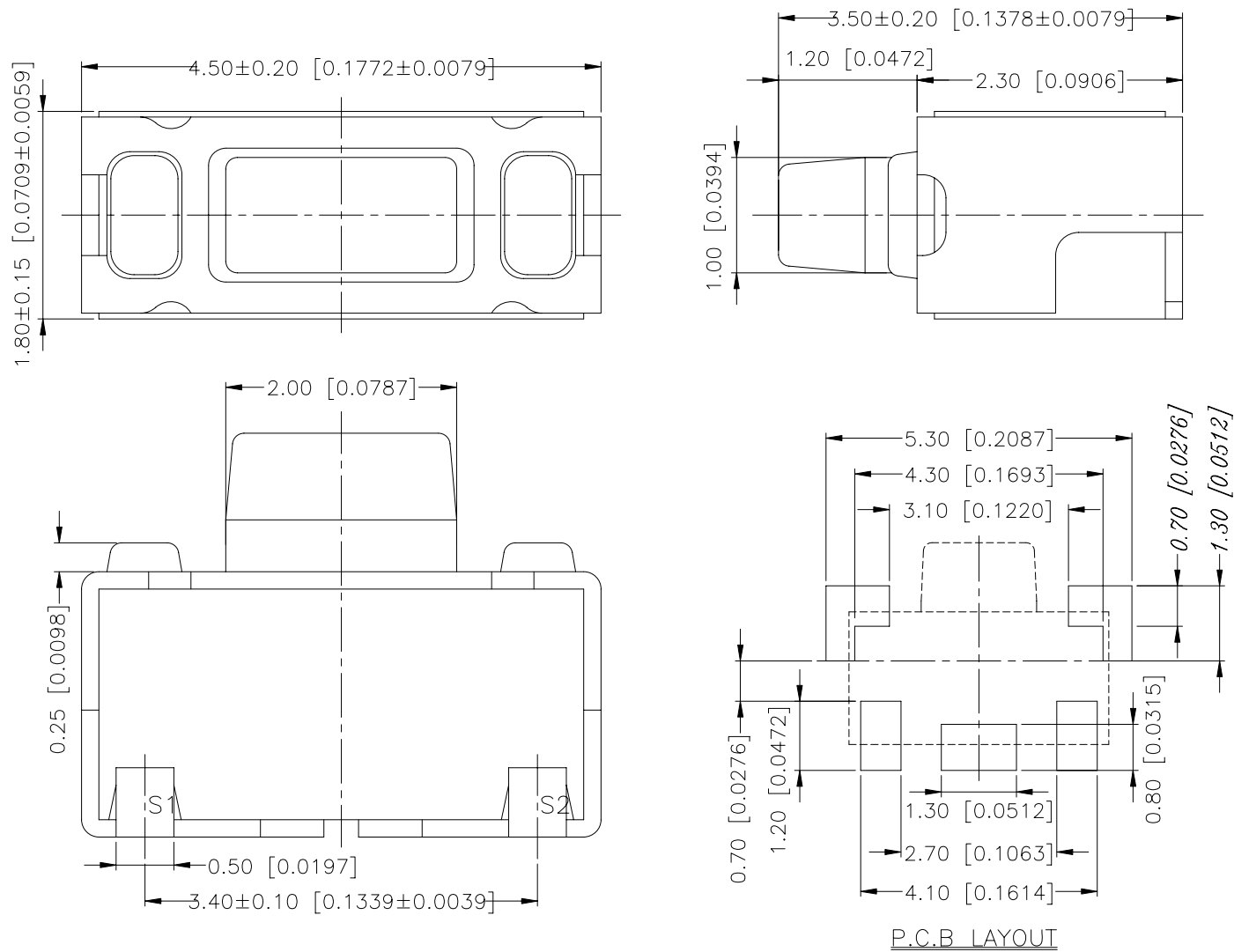


# MTA SERIES



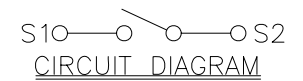
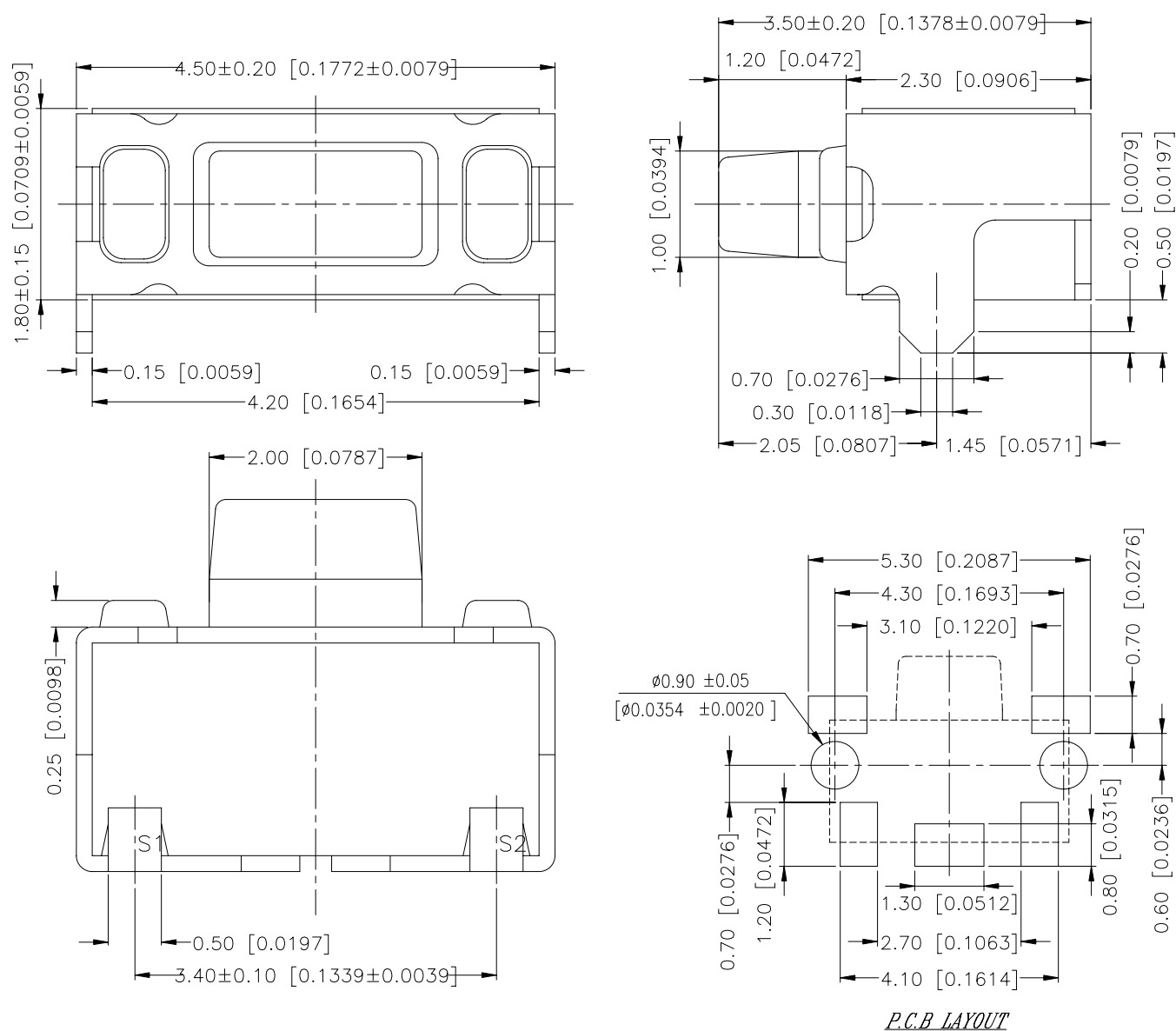
## DIMENSION

### MTA-N



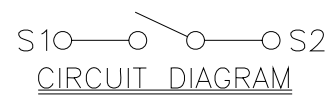
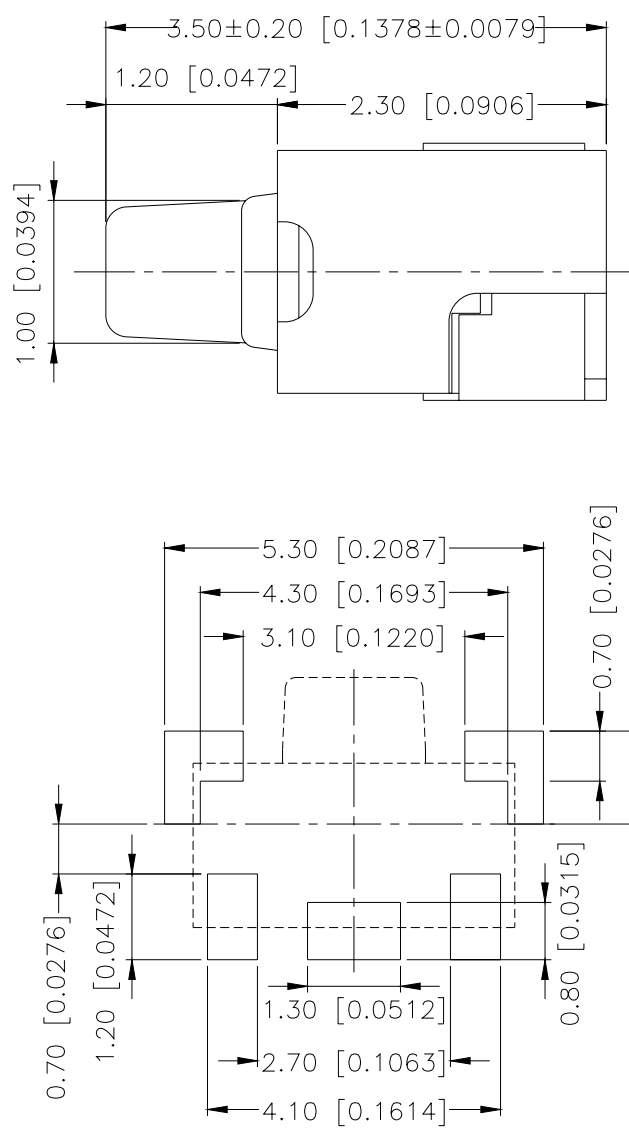
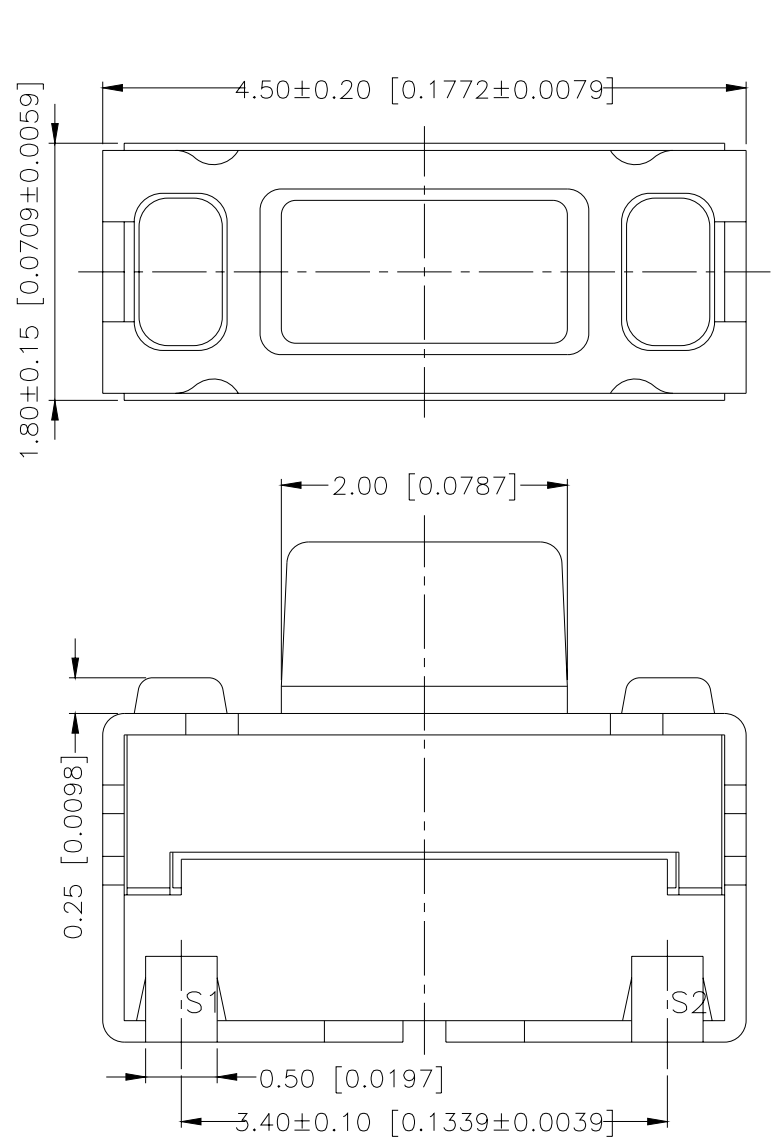
General Tolerance : ±0.2mm

### MTA-NC



General Tolerance : ±0.2mm

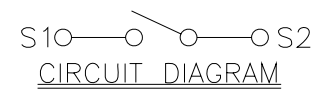
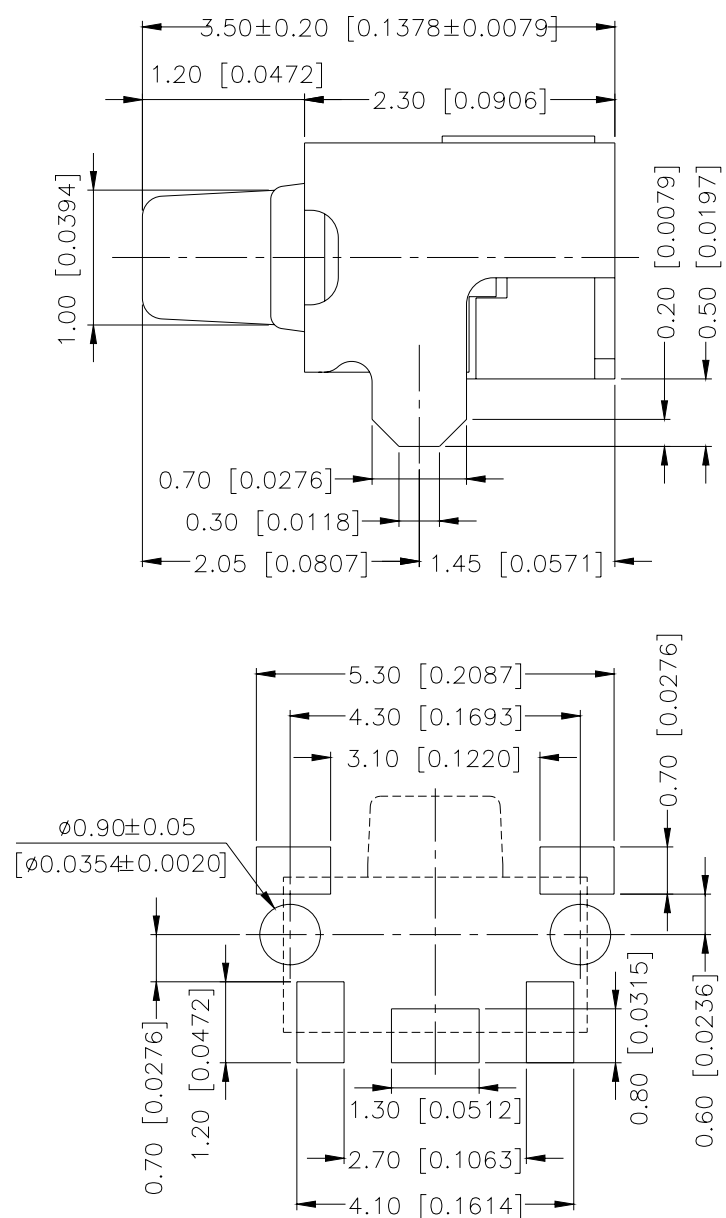
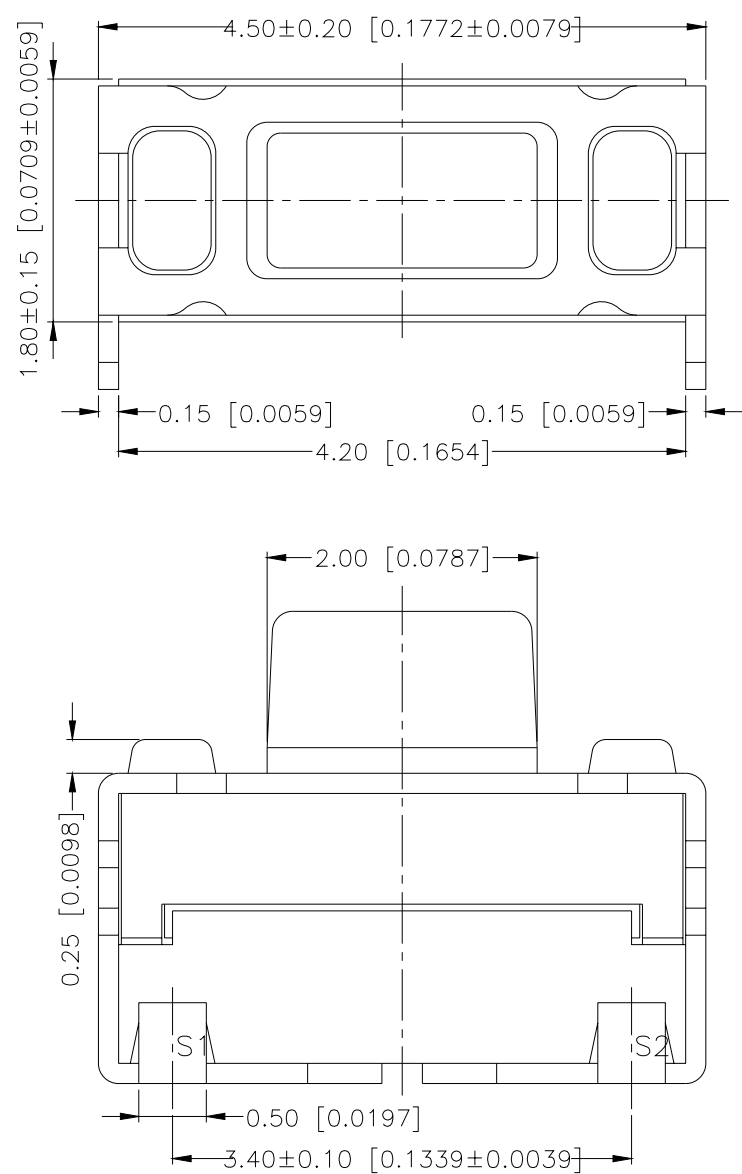
MTA-WN



P.C.B LAYOUT

General Tolerance : ±0.2mm

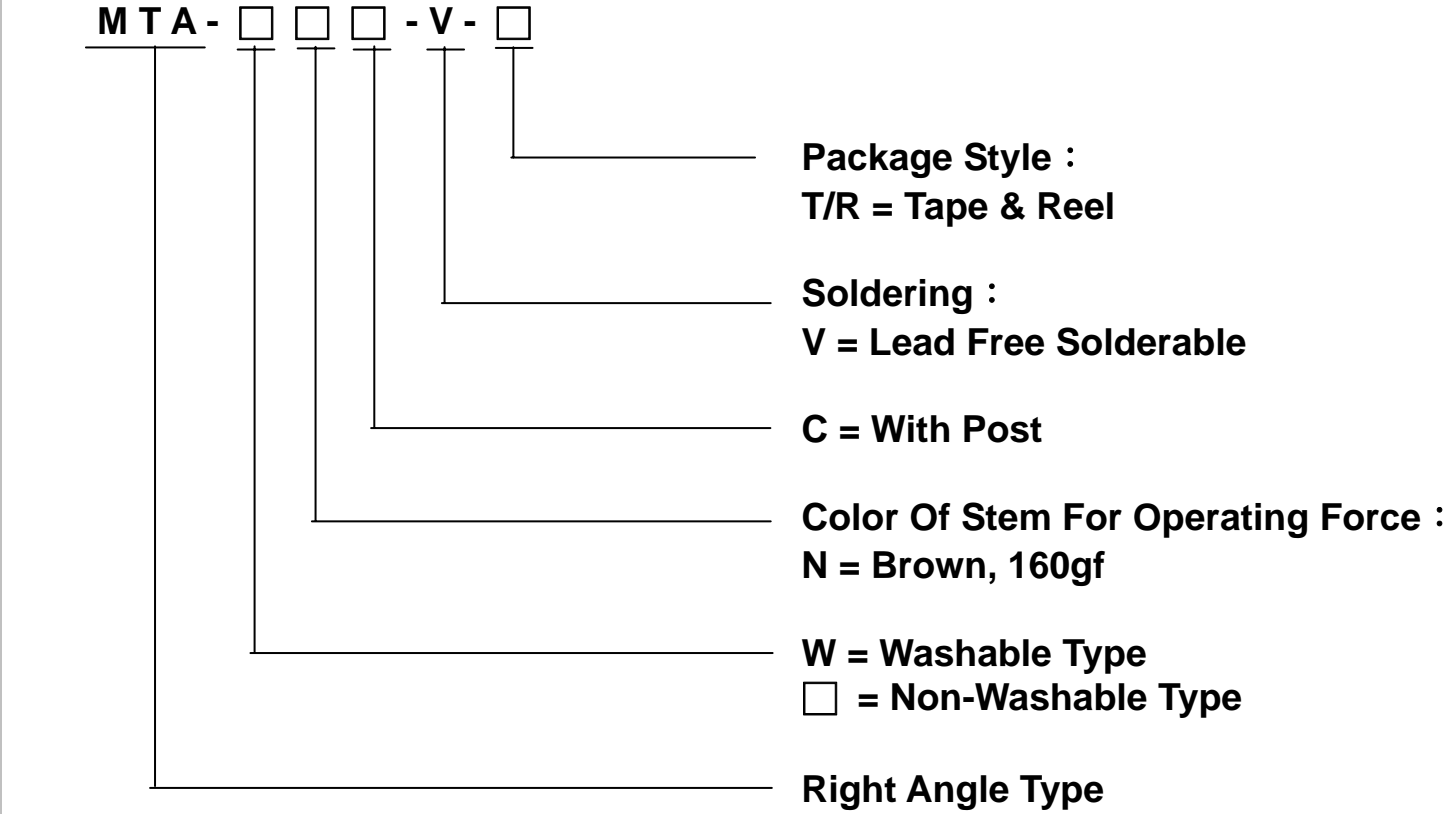
MTA-WNC



P.C.B LAYOUT

General Tolerance : ±0.2mm

HOW TO ORDER



SPECIFICATION

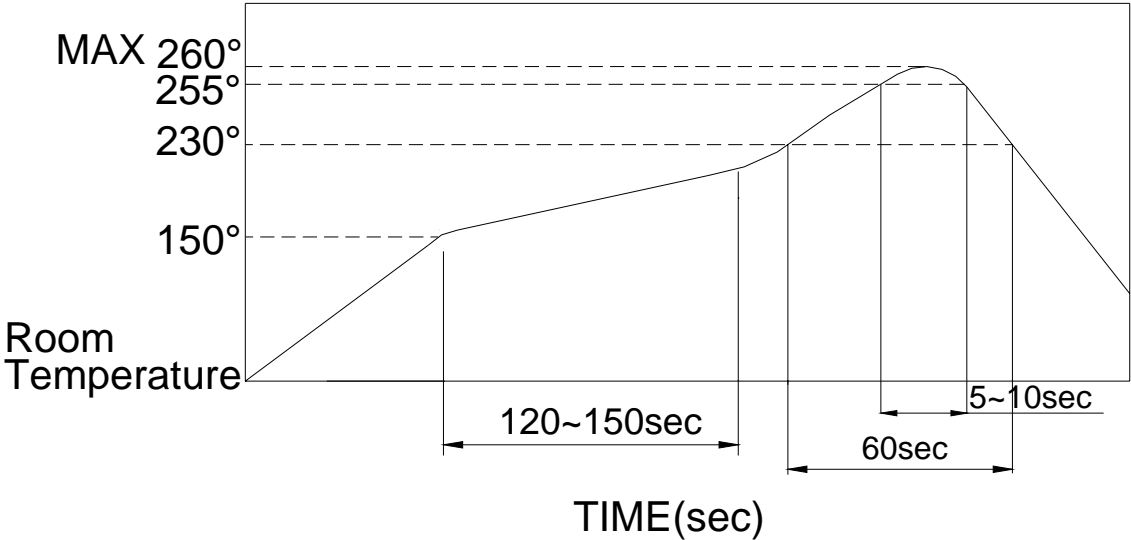
- △MECHANICAL
- Mechanical Life : 50,000 cycles
- Operation Force : 160±50gf
- Stroke : 0.2±0.1mm
- △ENVIRONMENTAL
- Operation Temperature Range : -30℃ to +80℃
- Storage Temperature Range : -40℃ to +90℃
- △ELECTRICAL
- Electrical Life: 50,000 cycles
- Switching Rating: 50 mA, 12 VDC

MATERIALS

- △COVER : Nickel Silver
- △BLOCK : PA9T High-temp Thermoplastic
- Color : Black
- △STEM : PA9T High-temp Thermoplastic
- Color : Brown
- △ADHESIVE TYPE : Kapton
- △CONTACT : Stainless steel
- △BASE : PA9T High-temp Thermoplastic
- Color : Black
- △TERMINAL : Brass with silver plating

SOLDERING PROCESS

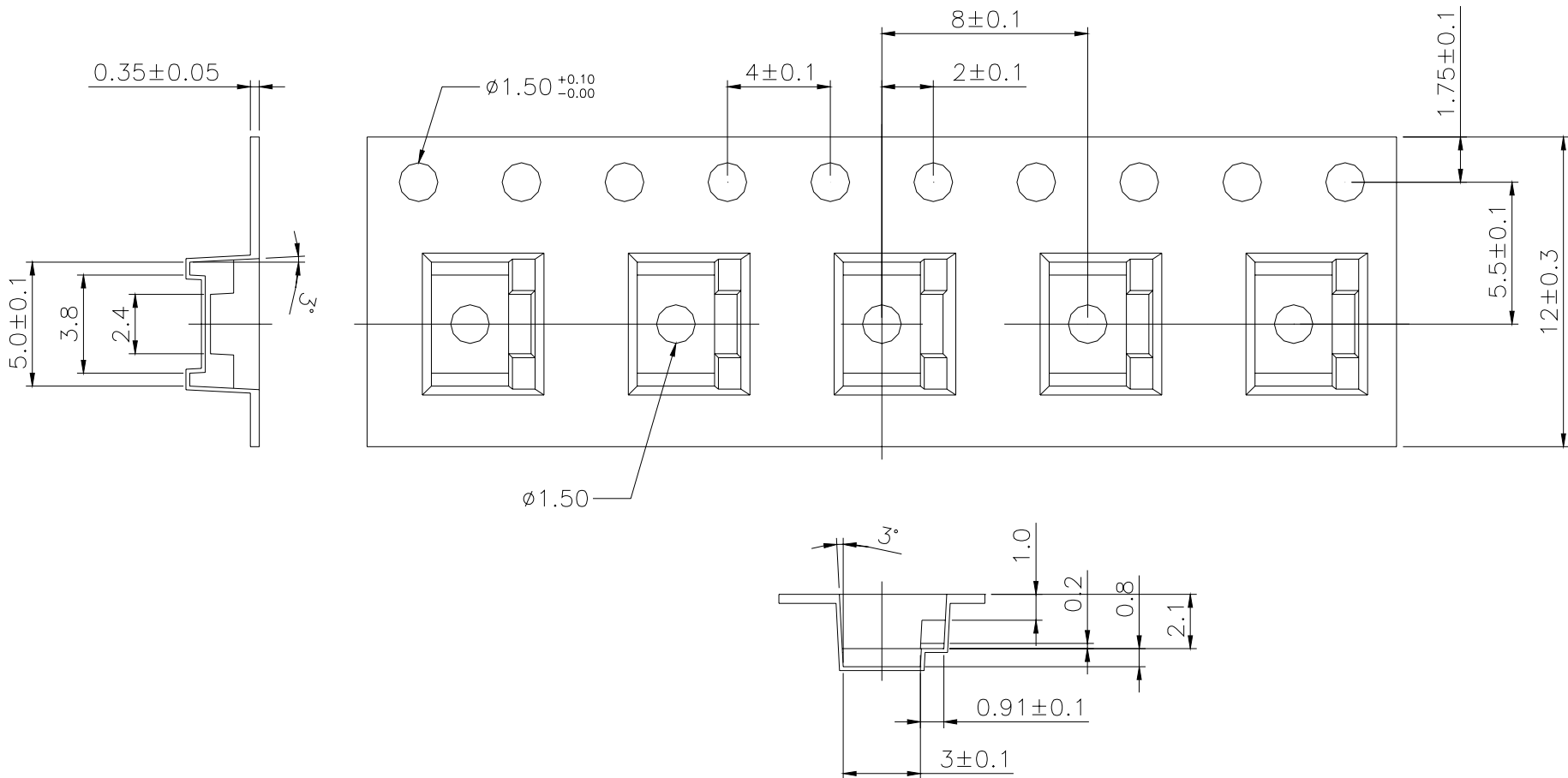
- △HAND SOLDERING : Us a soldering iron of 30 watts, controlled at 350℃ approximately 5 seconds while applying solder.
- △REFLOW SOLDERING : When applying reflow soldering, the peak temperature or the reflow over should be set to 260℃ max.
- △TEMPERATURE PROFILE :



PACKING

REEL

Part Number	Number Per Reel	Number Per Tube
MTA-N	3000	—
MTA-NC	3000	—
MTA-WN	3000	—
MTA-WNC	3000	—



General Tolerance :  $\pm 0.2\text{mm}$