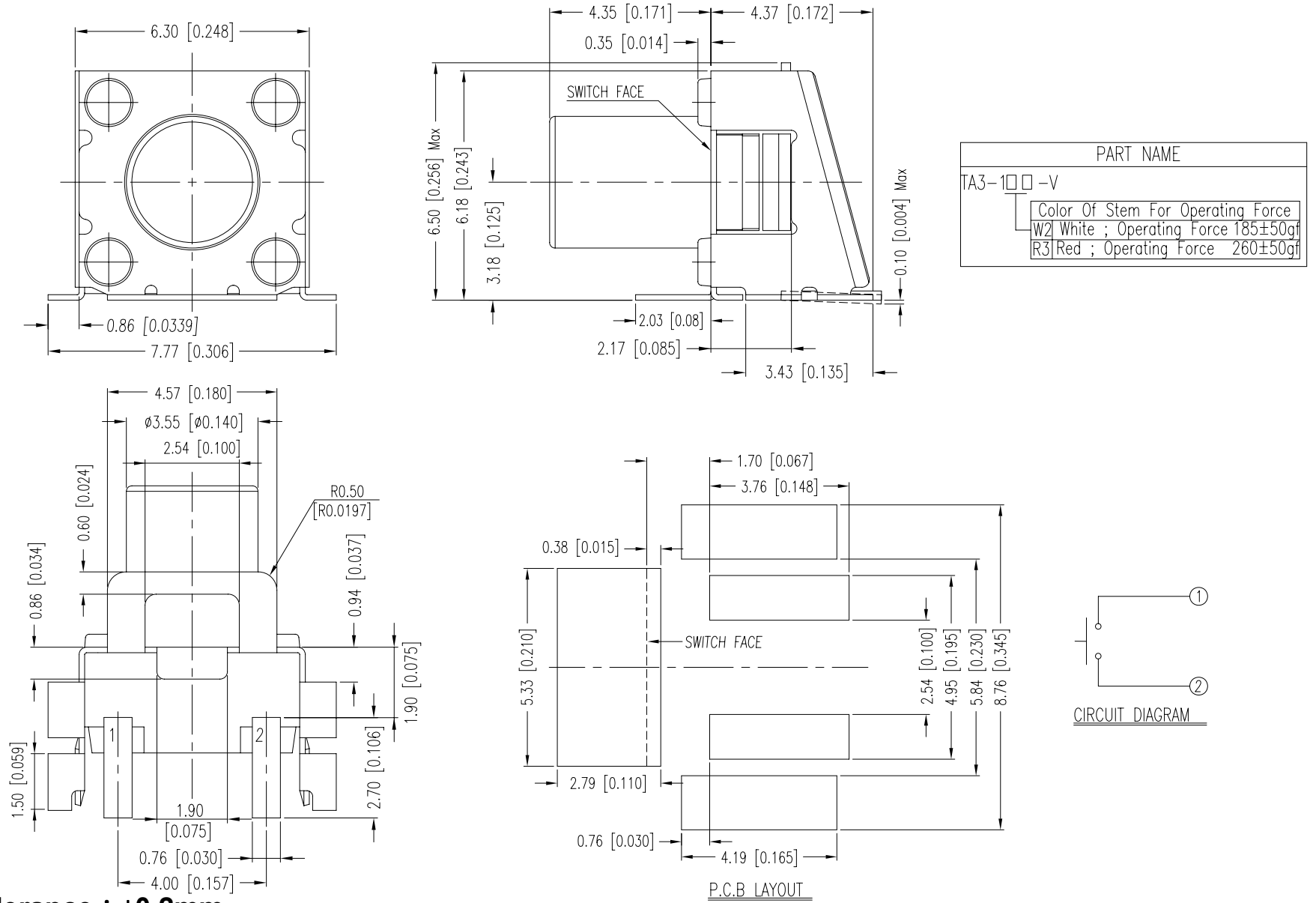


TA3 SERIES

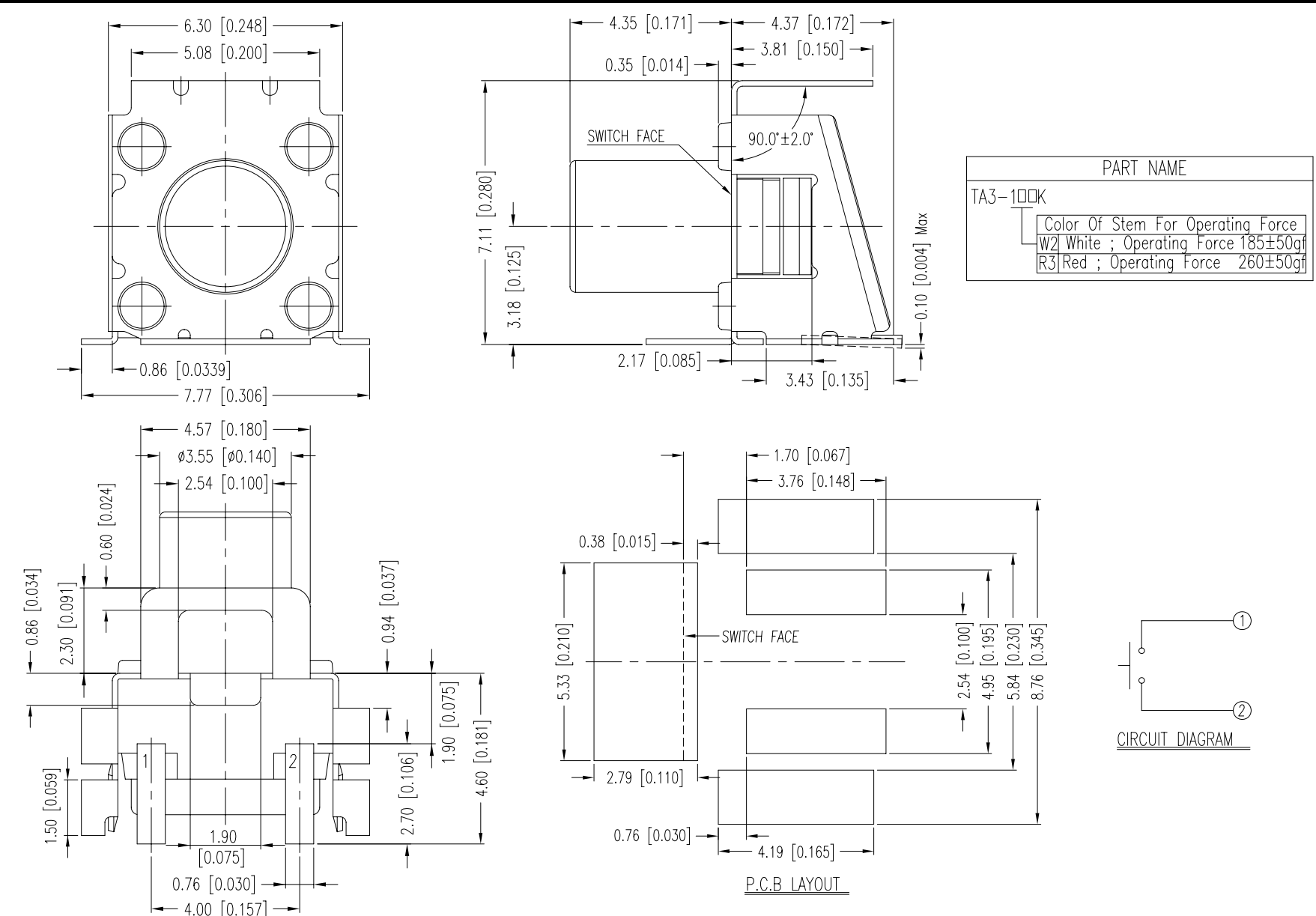
DIMENSION

TA3-1



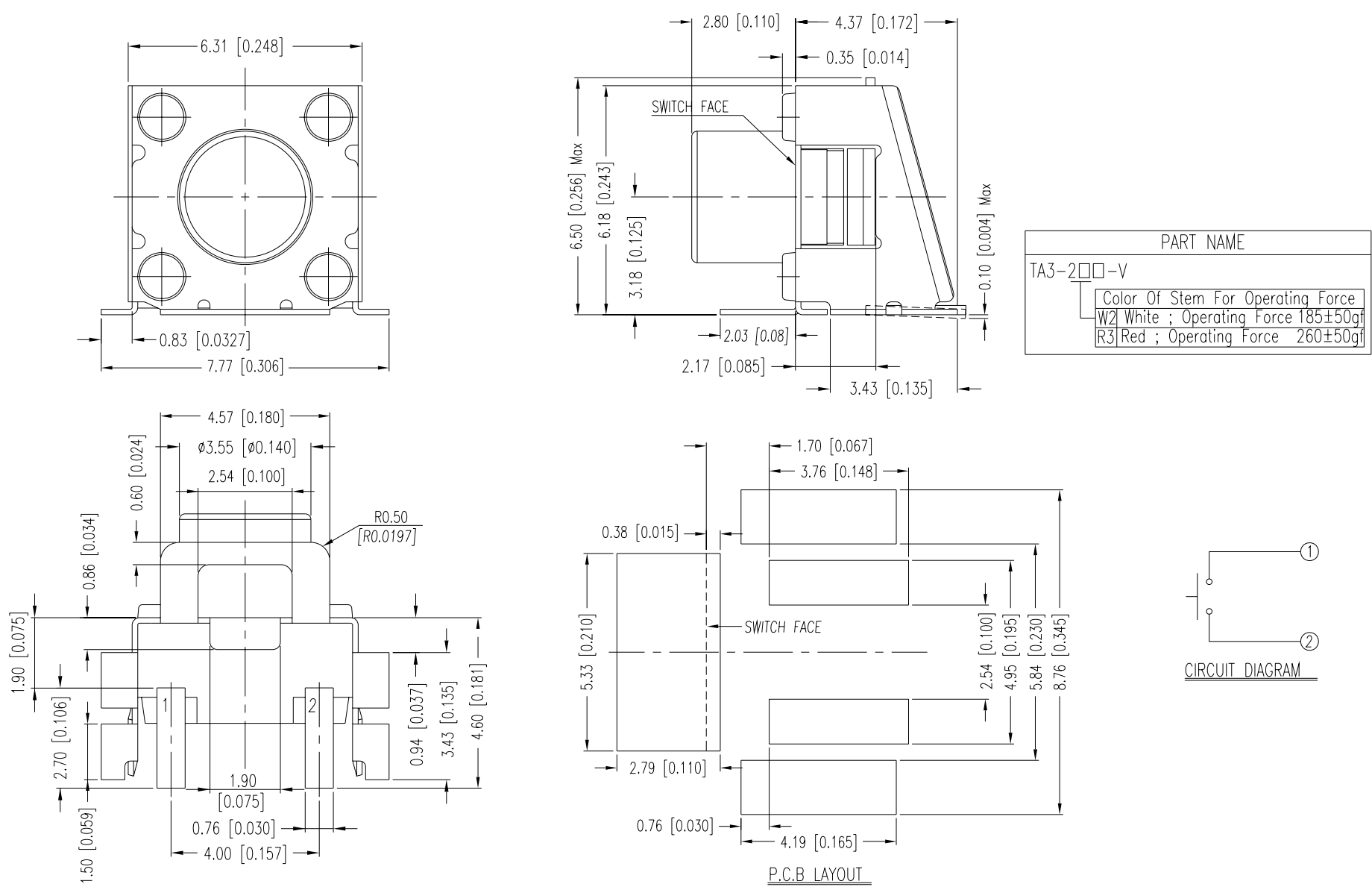
General Tolerance : $\pm 0.2\text{mm}$

TA3-1K



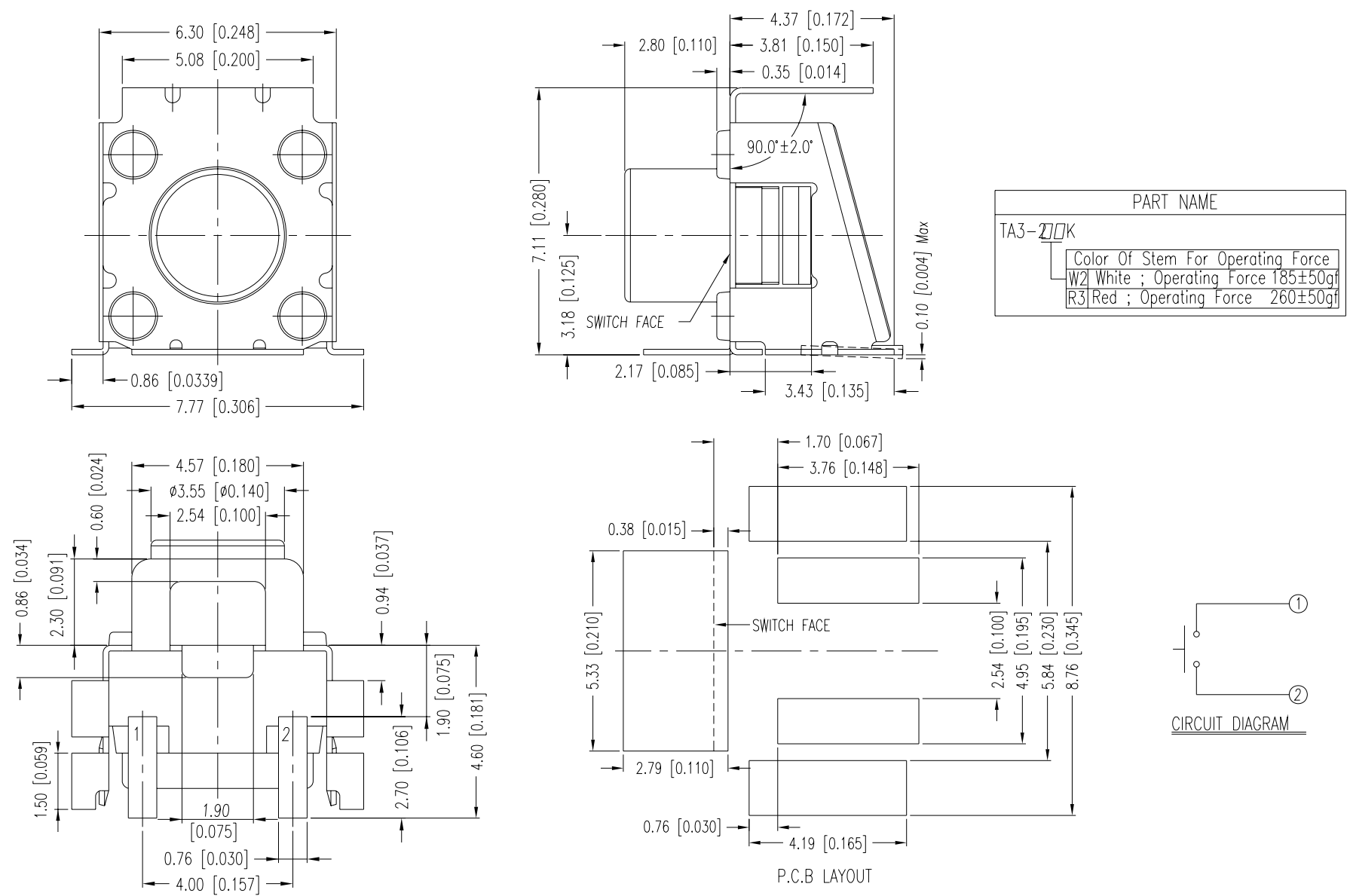
General Tolerance : $\pm 0.2\text{mm}$

TA3-2



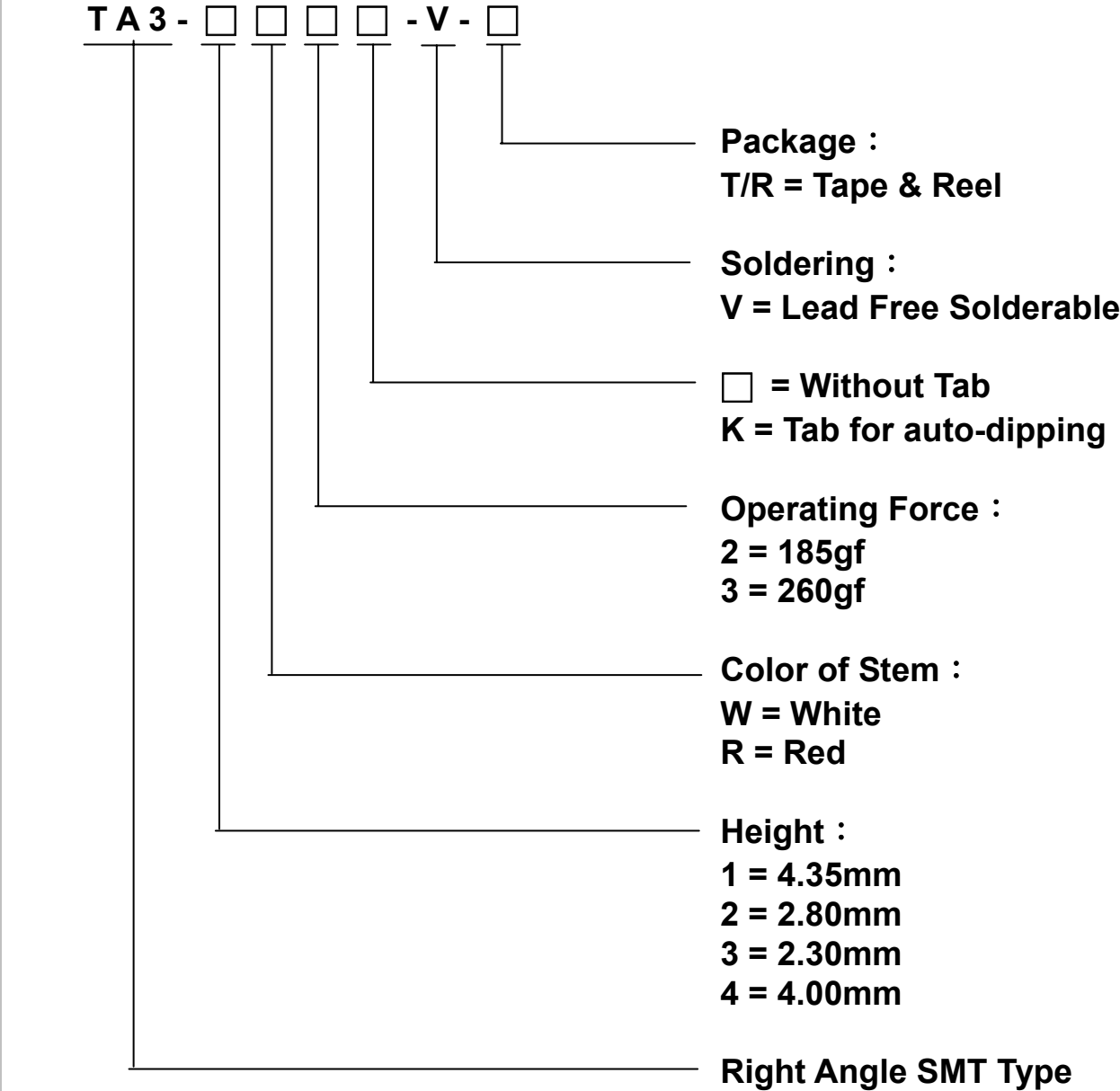
General Tolerance : ±0.2mm

TA3-2K



General Tolerance : ±0.2mm

HOW TO ORDER



SPECIFICATION

△MECHANICAL

Operation Force : 180±50gf, White(W)
260±50gf,Red(R)

Stroke : 0.15mm Min

Operation Temperature Range : -25℃ to +70℃

Storage Temperature Range : -30℃ to +80℃

△ELECTRICAL

Electrical Life: 200,000 cycles

Rating: 1.5 mA, 5 VDC

Contact Resistance: 100mΩ max.

Insulation Resistance: 100MΩ min. at 500 VDC

Dielectric Strength: 250V AC/1 minute

Contact Arrangement : 1 pole 1 throw.

MATERIAL

△COVER : Stainless steel

△STEM : Nylon High-temp Thermoplastic
Color : White <180gf>, Red <260gf>

△CONTACT : Stainless with silver plating

△BLOCK : Nylon High-temp Thermoplastic
Color : Black

△SEAL : Silicone Rubber

△BASE : LCP High-temp Thermoplastic
Color : Black

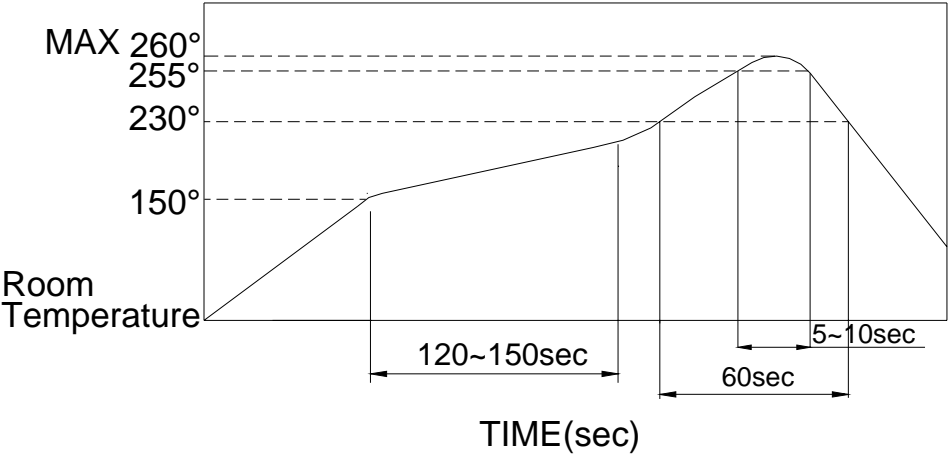
△TERMINAL : Brass with silver plating

SOLDERING PROCESS

△HAND SOLDERING : Us a soldering iron of 30 watts, controlled at 350℃ approximately 5 seconds while applying solder.

△REFLOW SOLDERING : When applying reflow soldering, the peak temperature or the reflow over should be set to 260℃ max.

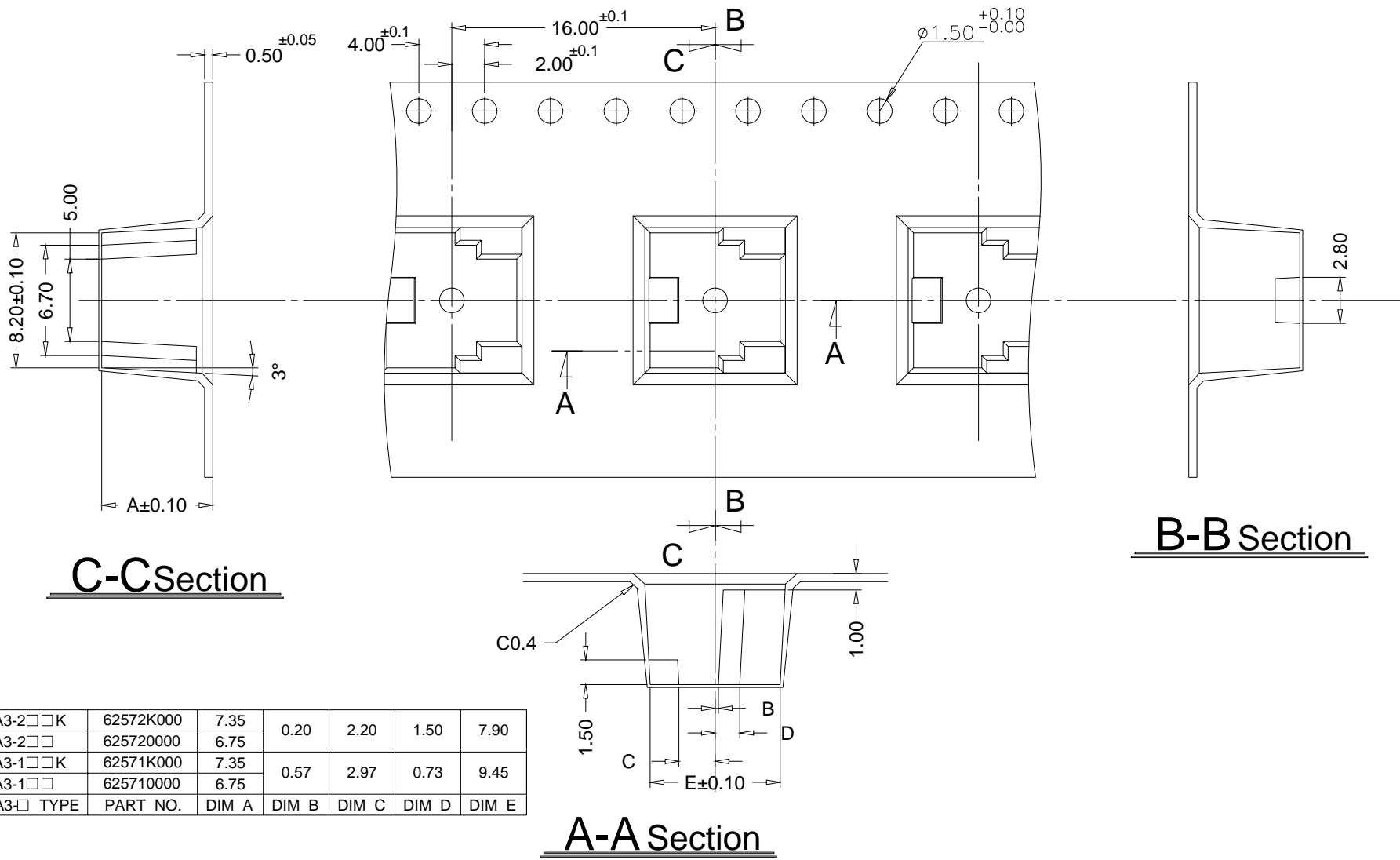
△Temperature Profile :



PACKING

REEL

Part Number	Number Per Tube	Number Per Reel
TA3-1W2	-	600
TA3-1R3	-	
TA3-2W2	-	
TA3-2R3	-	
TA3-1W2K	-	550
TA3-1R3K	-	
TA3-2W2K	-	
TA3-2R3K	-	



General Tolerance : ±0.1mm