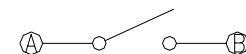
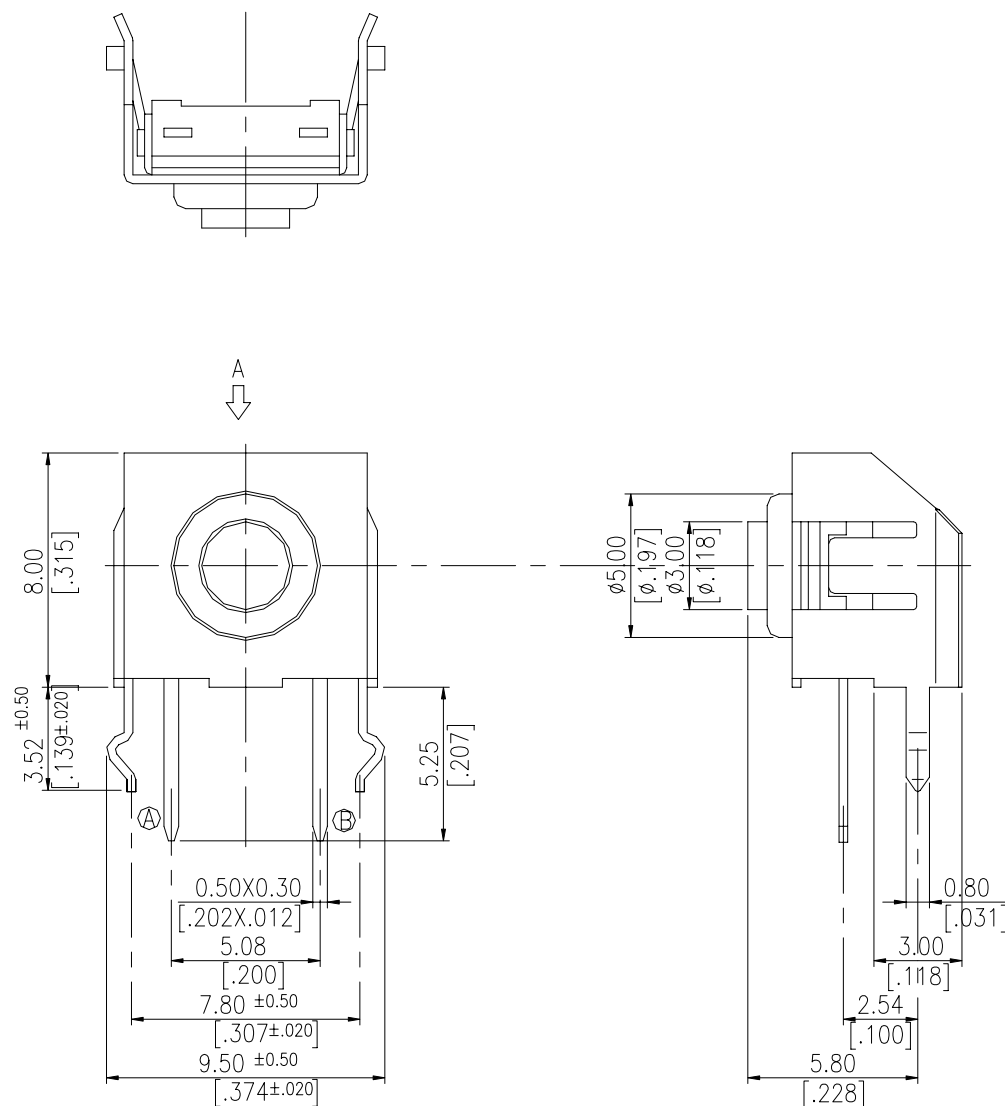


T□4 SERIES

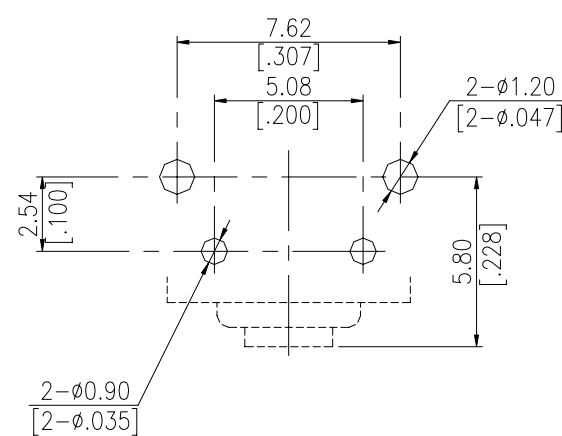


DIMENSION

TA4



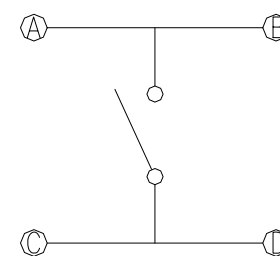
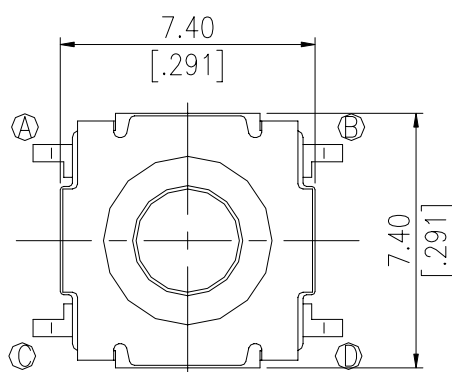
CIRCUIT



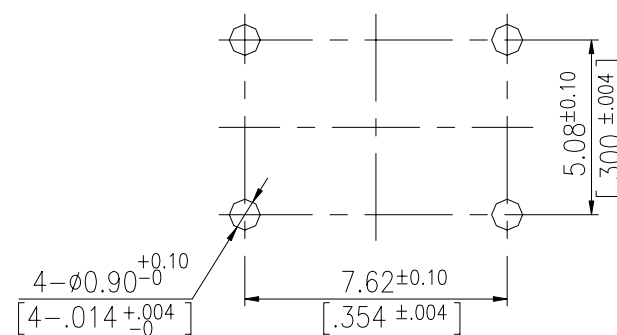
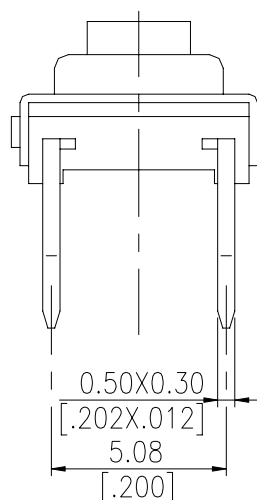
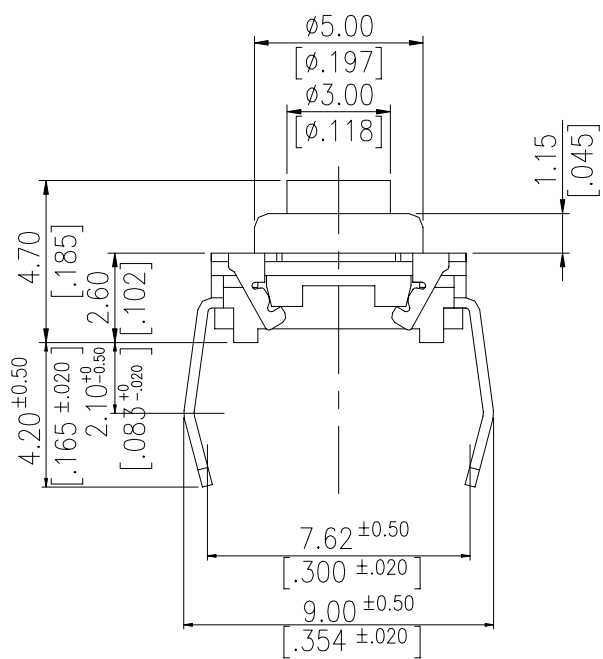
P.C.B. LAYOUT
(VIEW FROM THE DIRECTION A)

General Tolerance : $\pm 0.2\text{mm}$

TH4



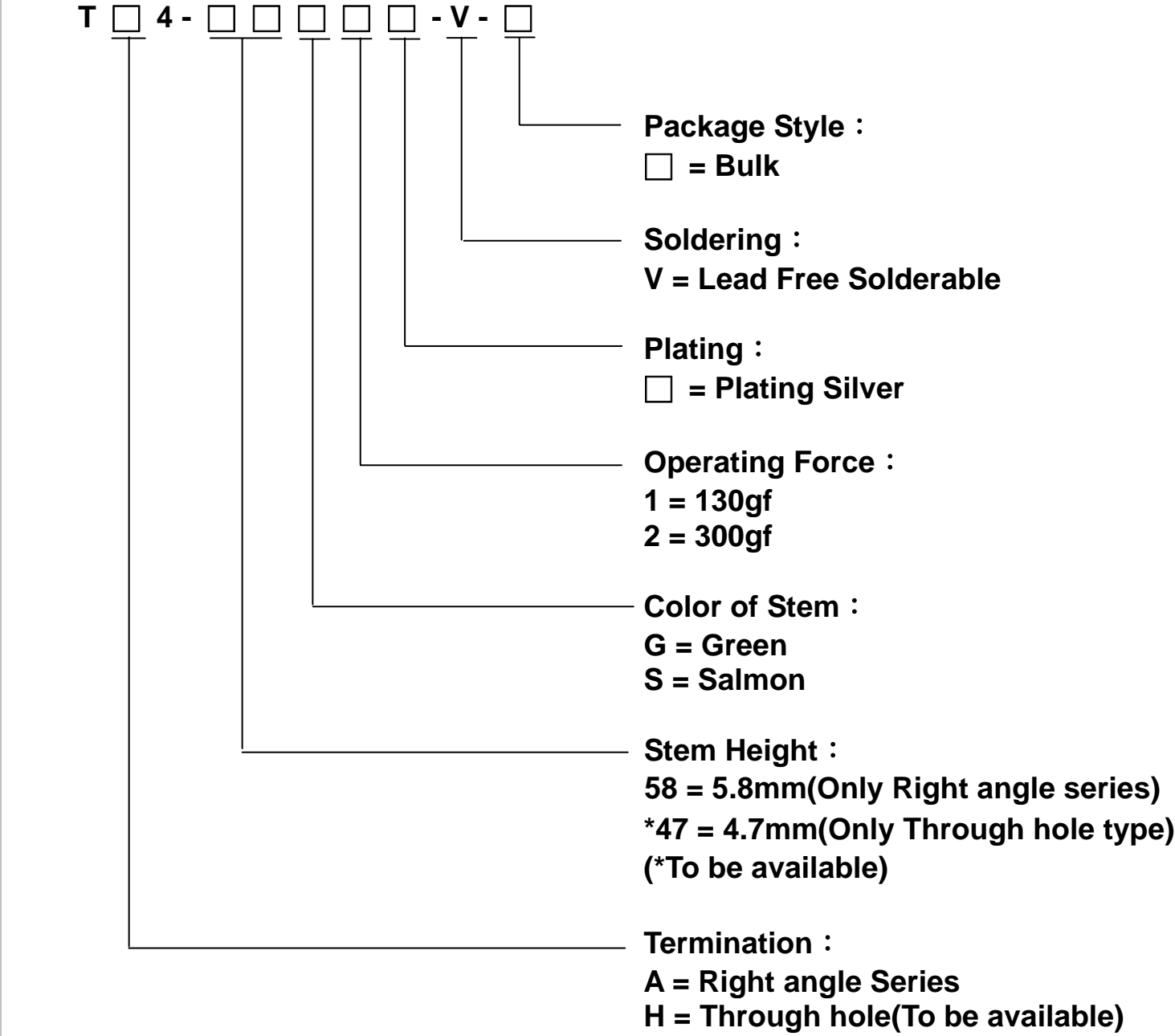
CIRCUIT



P.C.B. LAYOUT

General Tolerance : $\pm 0.2\text{mm}$

HOW TO ORDER



SPECIFICATION

- △MECHANICAL
- Mechanical Life : 1,000,000 cycles
- Operation Force : 130±50gf
- Stroke : 0.5±0.2mm
- △ENVIRONMENTAL
- Operation Temperature Range : -40℃ to +90℃
- Storage Temperature Range : -40℃ to +90℃
- △ELECTRICAL
- Electrical Life: 1,000,000 cycles
- Switching Rating: 50 mA, 50 VDC

MATERIAL

- △BRACKET : Phosphor Bronze with silver plating
- △COVER : Brass
- △BASE : UL 940V-0 NYLON High-temp thermoplastic
Color : Black
- △STEM : UL 940V-0 NYLON High-temp thermoplastic
Color : with silver plating
- △TERMINAL : Brass with silver plating
- △SILICONE RUBBER : Silicone
Color : White
- △DOME : Stainless Steel

SOLDERING PROCESS

- △HAND SOLDERING : Us a soldering iron of 30 watts, controlled at 350℃ approximately 5 seconds while applying solder.
- △WAVE SOLDERING : Recommended solder temperature At 500° F(260℃)max. 5 seconds.

<u>PACKING</u>	Part Number	Number Per Reel	Number Per Bulk
	TA4-58G1-V	-	500
	TA4-58K1-V	-	500

--